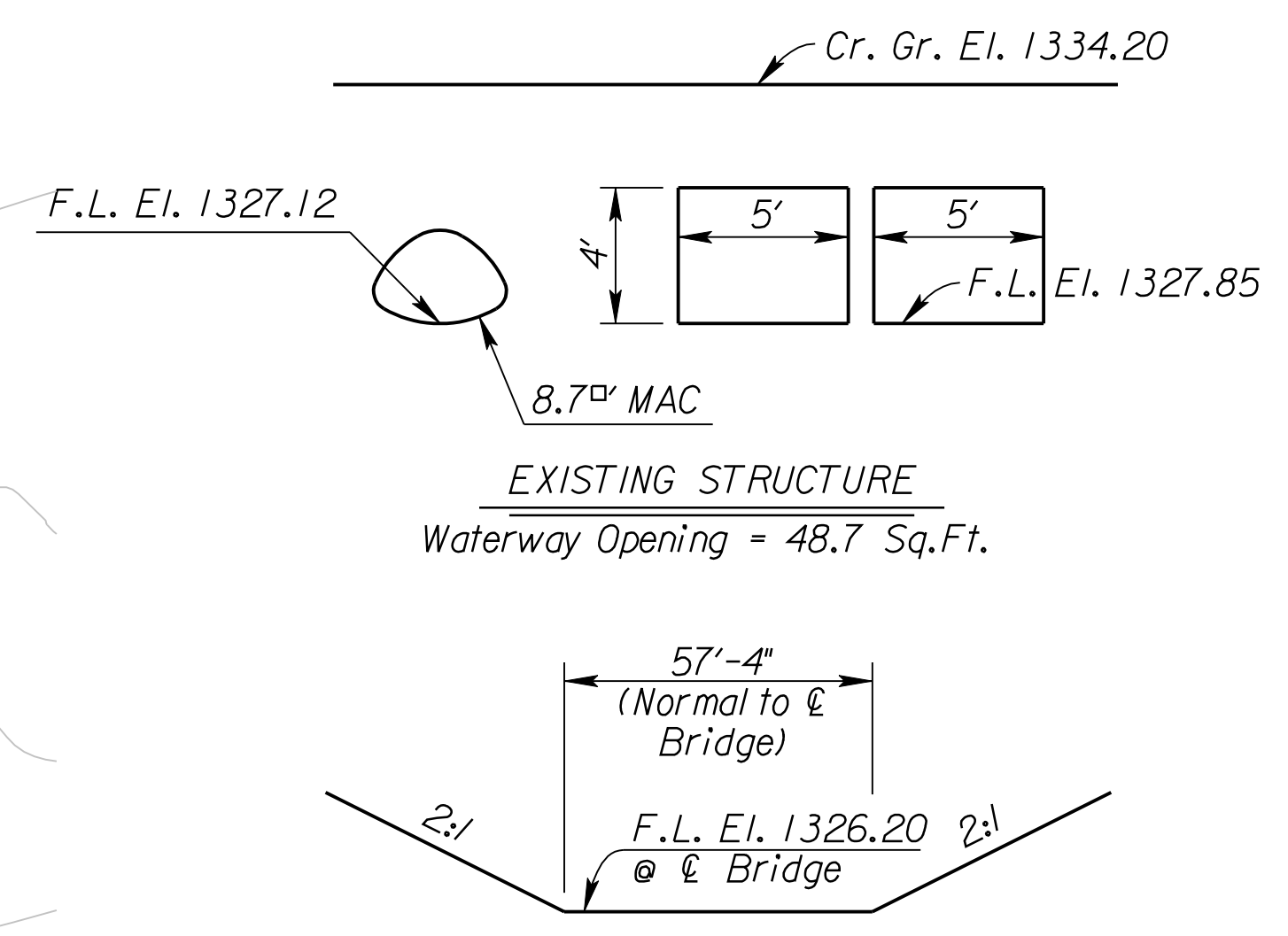
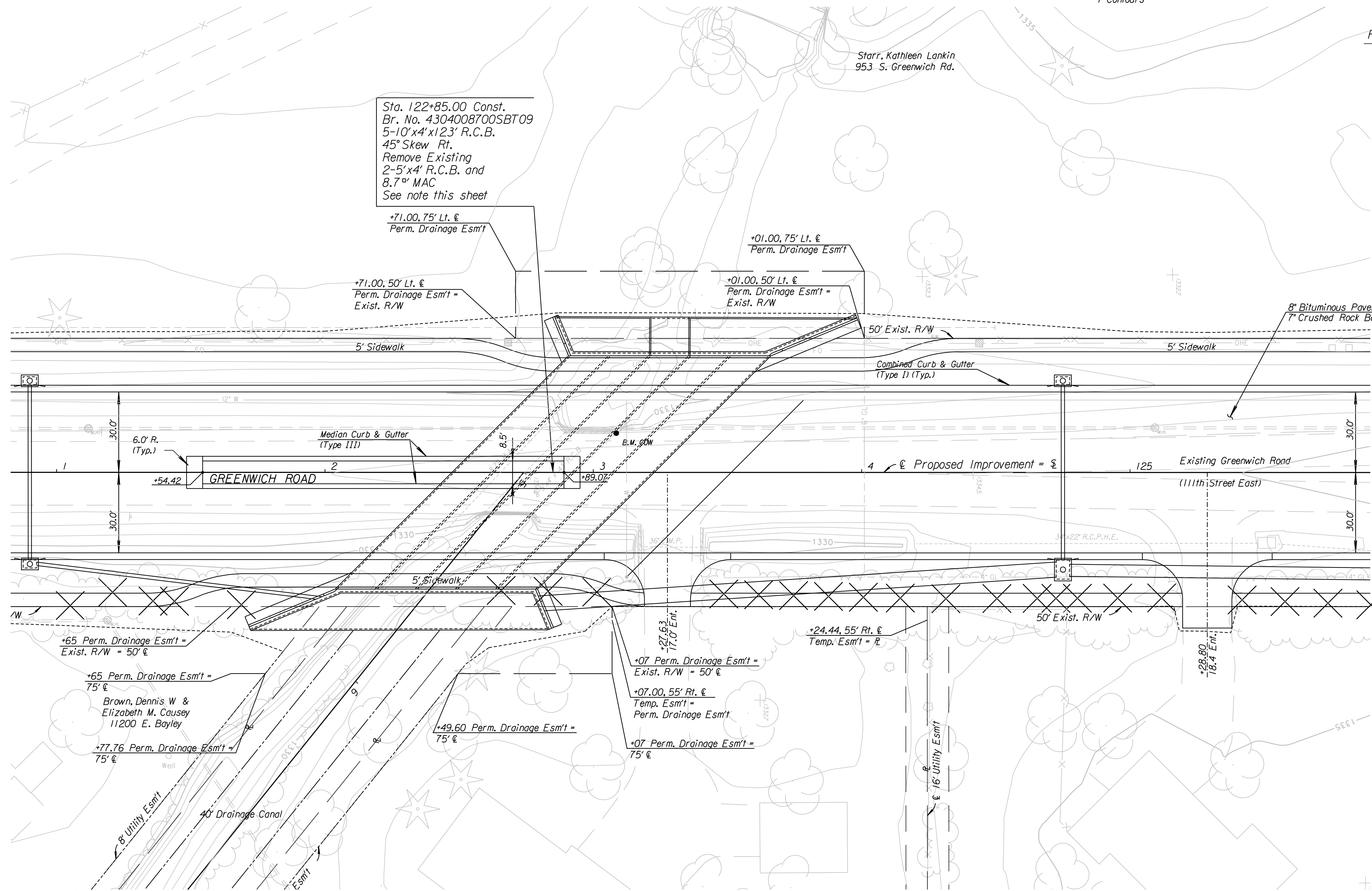
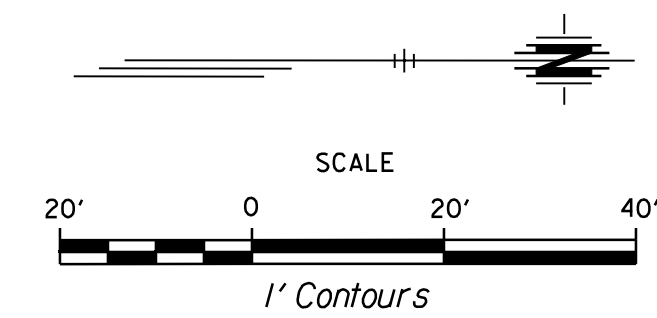


COUNTY	STATE	PROJECT NO.	YEAR	SHEET NO.	TOTAL SHEETS
SEDGWICK	KANSAS	87 N-0386-01	2009	108	255

HCP Pt. 5 =
 £ Sta. 126+32.57, 27.50' Lt.
 1. 1/2" Rebar with Orange Cap 24.80' SW
 2. Nail & tin in power pole 42.60' NW
 3. Nail & tin on Steel "t" fence post 27.50' E
 4. Centerline Greenwich Road

P.I. £ Sta. 126+54.39
 1. Not set



TYPICAL CHANNEL SECTION

REMOVAL OF EXISTING STRUCTURE:
 The Contractor shall remove the existing 2-5'x4' R.C.B. structure and 8.7" MAC. Removal of existing structure is included in the bid item, "Removal of Existing Structures", Lump Sum. All material removed shall become the property of the Contractor and shall be removed from the site by the Contractor. See construction sequence sheets for traffic through construction. The Contractor shall excavate the channel at the Bridge Site prior to construction of the Bridge.

DRAINAGE DATA

Drainage Area	0.87 Sq.Mi.
Design Frequency	50 Yr.
Design Discharge (Q ₅₀)	1453 cfs
Design High Water Elevation (HW=5.75 Ft.)	1331.91 Ft.
Overtopping Elevation (Sta. 124+75)	1333.23 Ft.
Overtopping Discharge	2,000 cfs
Overtopping Frequency	>100 Yr.
Historic High Water Elevation (Q ₁₀₀)	N/A Ft.
Exit Velocity (Q ₅₀)	7.3 fps

K:\35751A\CADD\SHEETS\STRUCTURES\BOX2\GRNWHCMBX2.dgn
 SURV. - PLOT CADD DES. RAN DR. JRI TR. CKD. JUR APP.

UTILITIES

Telephone	AT&T
Electric	Westar
Gas	Kansas Gas Service
Water	City of Wichita
Sanitary Sewer	City of Wichita
Cable TV	Cox Communications

City of Wichita B.M. Brass Disk on R.C.B. hub guard
 15' Lt. £ Sta. 123+08.5304 El. 1334.01

SW Cor NW 1/4 Sec. 27, T27S, R2E
 1. 0.00' Rt. of £ Sta. 126+54.39
 2. Not Found

See Sh. No. 119 for Soil Saver Lt.
 See Sh. No. 117 & 118 for handrail.

B.M. #11 Chiseled "a" on top of C-G inlet
 170' Rt. £ Sta. 126+75.2552 El. 1335.86

CITY OF WICHITA
 JAMES ARMOUR, P.E., CITY ENGINEER
 GREENWICH ROAD
CONTOUR MAP
 BR. NO. 4304008700SBT09 5-10'x4'x123' R.C.B.

 SCALE 1"=20' DATE 11/23/2009 DWG. NO. 35751A