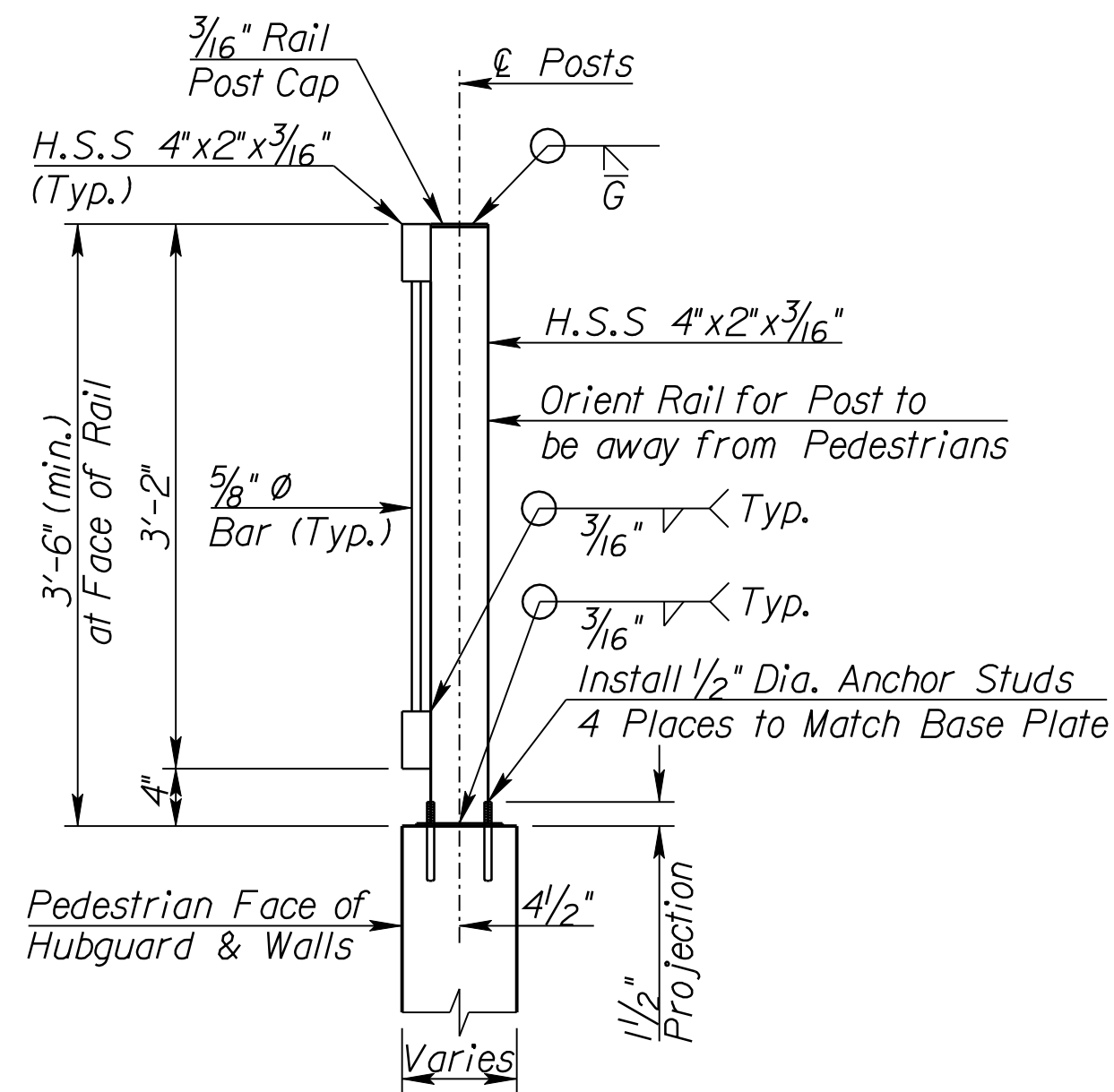
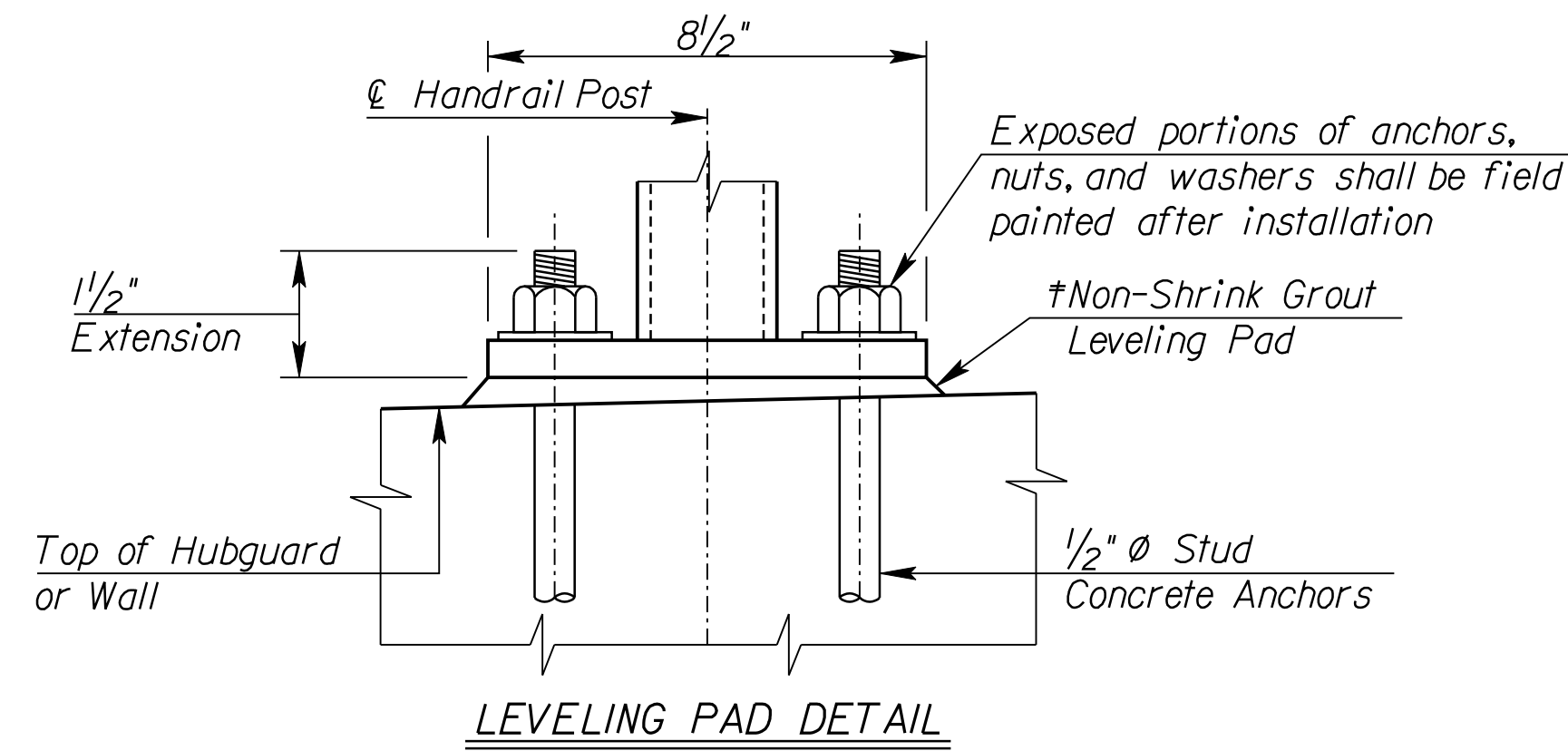


COUNTY	STATE	PROJECT NO.	YEAR	SHEET NO.	TOTAL SHEETS
SEDGWICK	KANSAS	87 N-0386-01	2009	118R	255

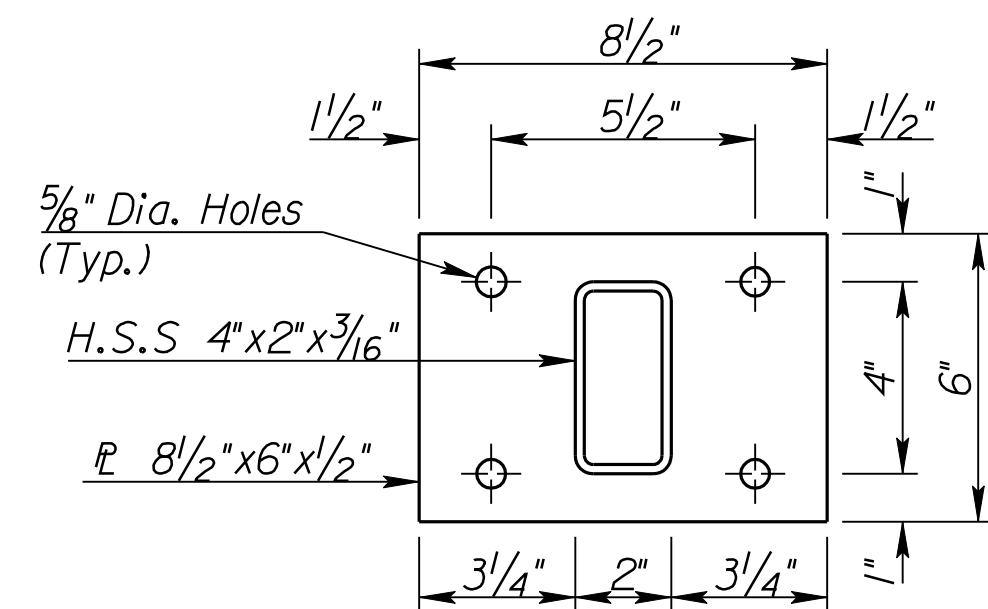
△ Revised 12/30/2009



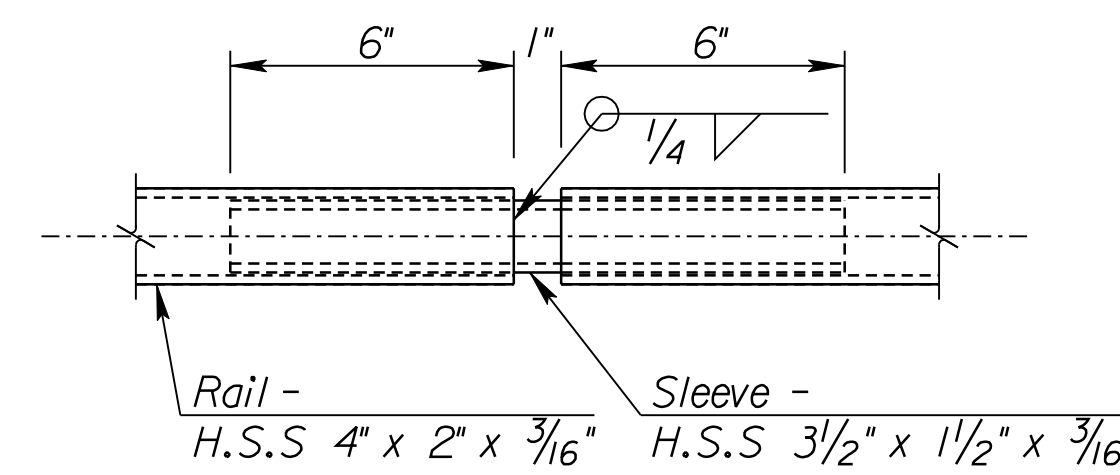
SECTION A-A
Scale 1" = 1'



† Note:
At the Contractor's option, a grouted leveling pad may be used in lieu of the steel shims to erect the posts vertical and shall have a minimum thickness of 1/4". The leveling pad shall be of a non-shrink grout as approved by the Engineer. The grout shall be mixed, applied and cured according to the manufacturer's recommendations.

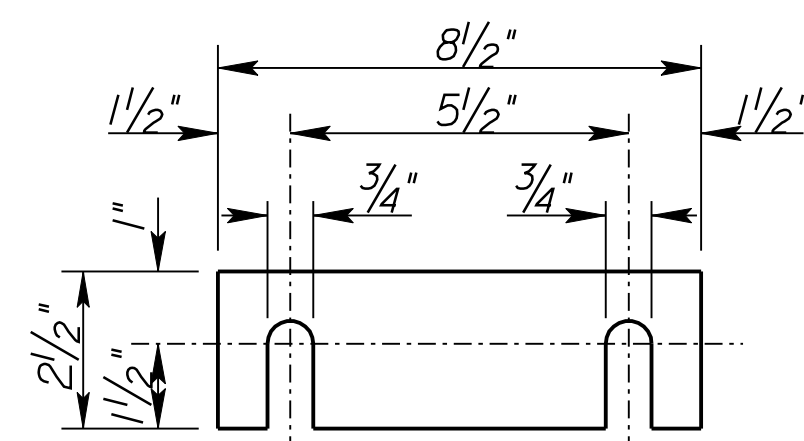


BASE PLATE
Scale 3" = 1'



EXPANSION JOINT DETAIL
(Top & Btm. Rail)

Note: Joints shall be located 2'-0" from a post at 25' maximum spacing.



SHIM DETAIL

Note:
Provide 3 - 1/16" galvanized steel shims per post, to be used as required.

GENERAL NOTES

The horizontal members of the rail and posts shall be hollow structural tubing. All structural steel and tubing shall comply to ASTM Designation A36 or A500 Grade B respectively. Material and construction shall conform to the Structural Welding Code A.W.S. D1.1:2006.

Anchor studs shall be glass capsule epoxy type threaded rods. Embed rods 5" minimum in concrete. Drill and grout hole locations after concrete is poured. The stud concrete anchors shall be galvanized and have a minimum pullout strength of 13.5 k based on 4 ksi concrete. Length of embedment into the concrete shall conform to manufacturer's recommendations. This work shall not result in an increase in cost and shall be paid for as Bridge Handrail (Metal)(3'-6").

Rail shall be fabricated in lengths as shown. Posts and bars shall be set vertical and shimmed if required.

△ Paint all rails, posts, pickets and base plates after fabrication. The paint system shall be approved by Engineer. Color of the finish coat shall be black.

Shop details must be submitted for approval by the Engineer. Contractor shall submit 7 copies of shop drawings for the handrail to the Engineer for Approval. Fabrication shall not commence until the Engineer has approved the shop drawings.

Handrail shall be paid for as lineal foot from end to end of rail and includes all materials, labor, splices, shims, installation and incidentals required as detailed on the plans. See KDOT Specification Section 721. Handrail shall be paid for as Handrail (Metal)(3'-6"). Contractor shall field measure dimensions for handrail.

See Sh. #117 for handrail elevations and location of Section A-A.

CITY OF WICHITA		
GREENWICH ROAD		
HANDRAIL DETAILS II		
SCALE	DATE	DWG NO.
	8/25/2009	35751A