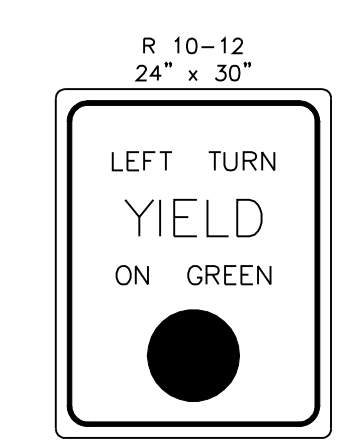


STANDARD SIGNING



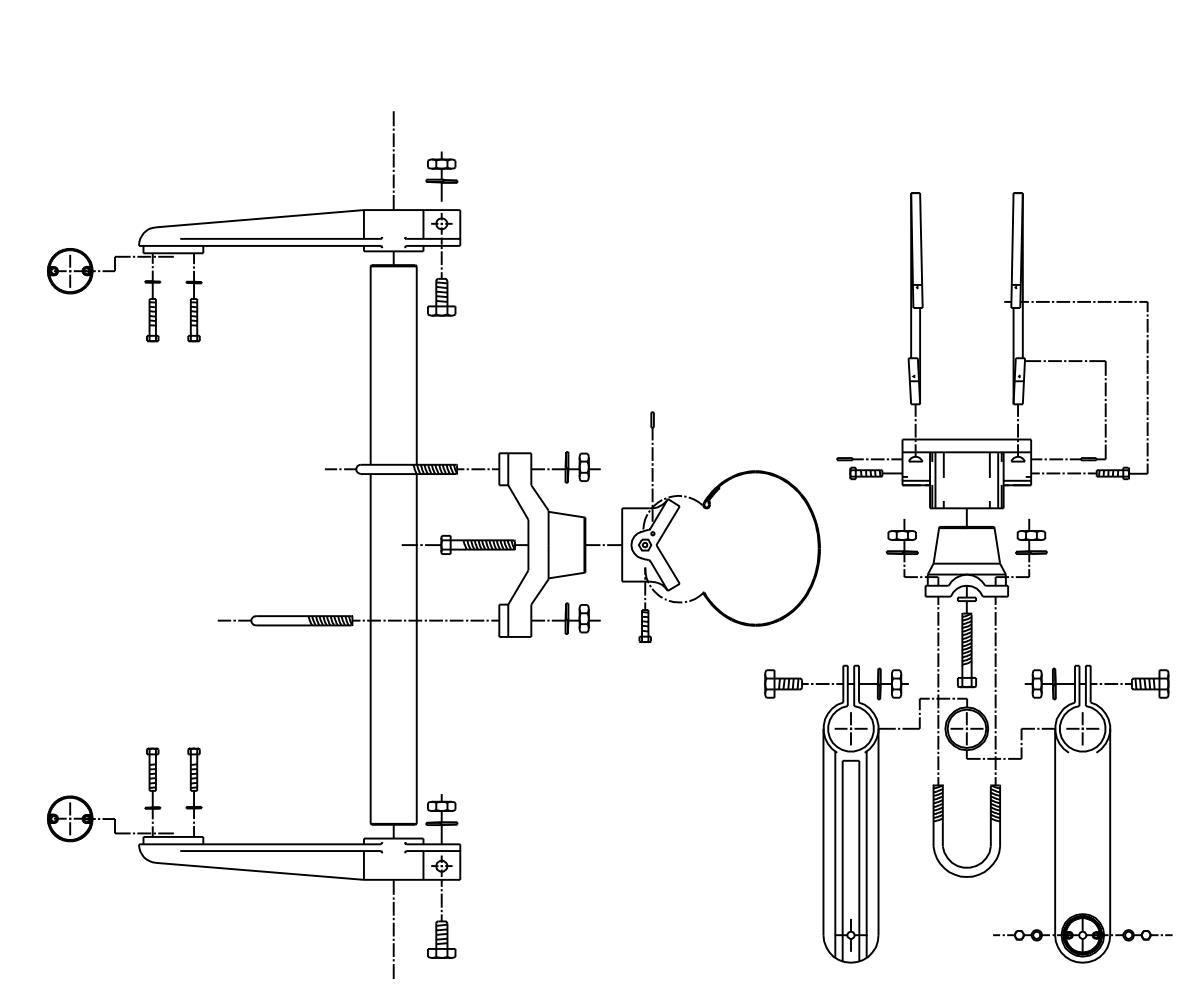
R 10-12
24" x 30"

SEE DETAIL "A" FOR MOUNTING HARDWARE

60" x 18"

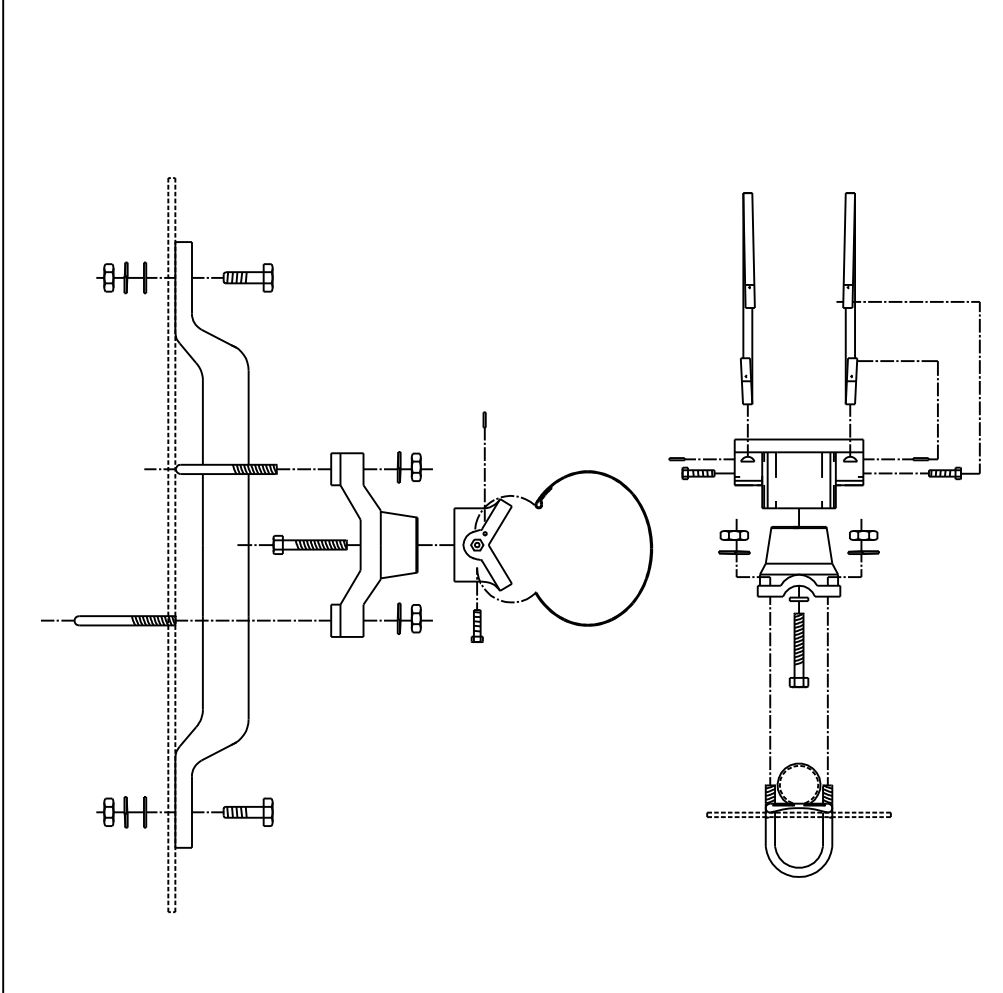
SEE DETAIL "A" FOR MOUNTING HARDWARE USE 2 PER SIGN

TYPE I SIGNAL MOUNTING BRACKET ASSEMBLY DETAIL



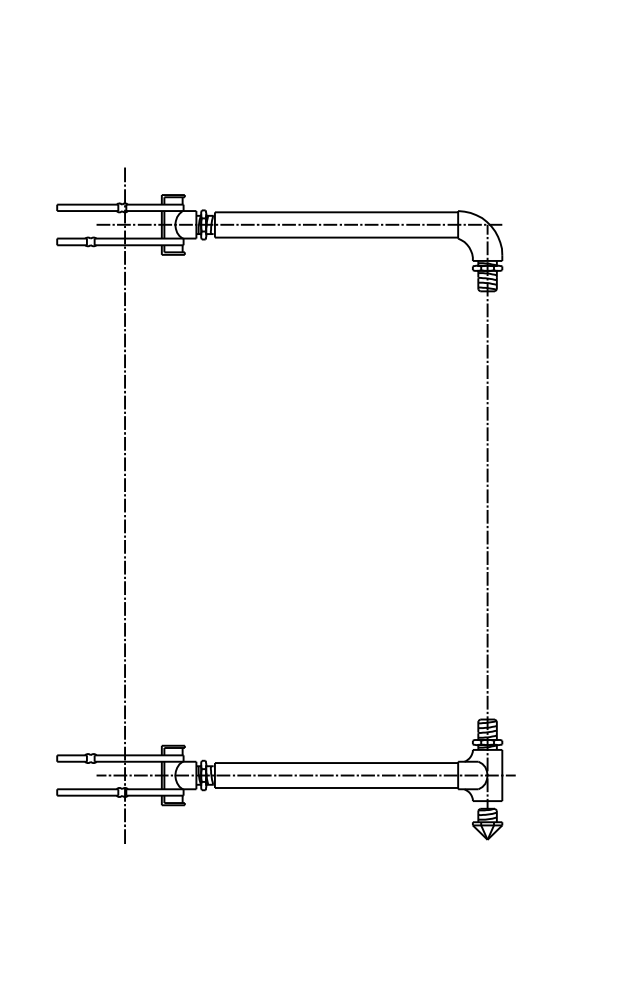
B

BANDED SIGN MOUNTING BRACKET DETAIL



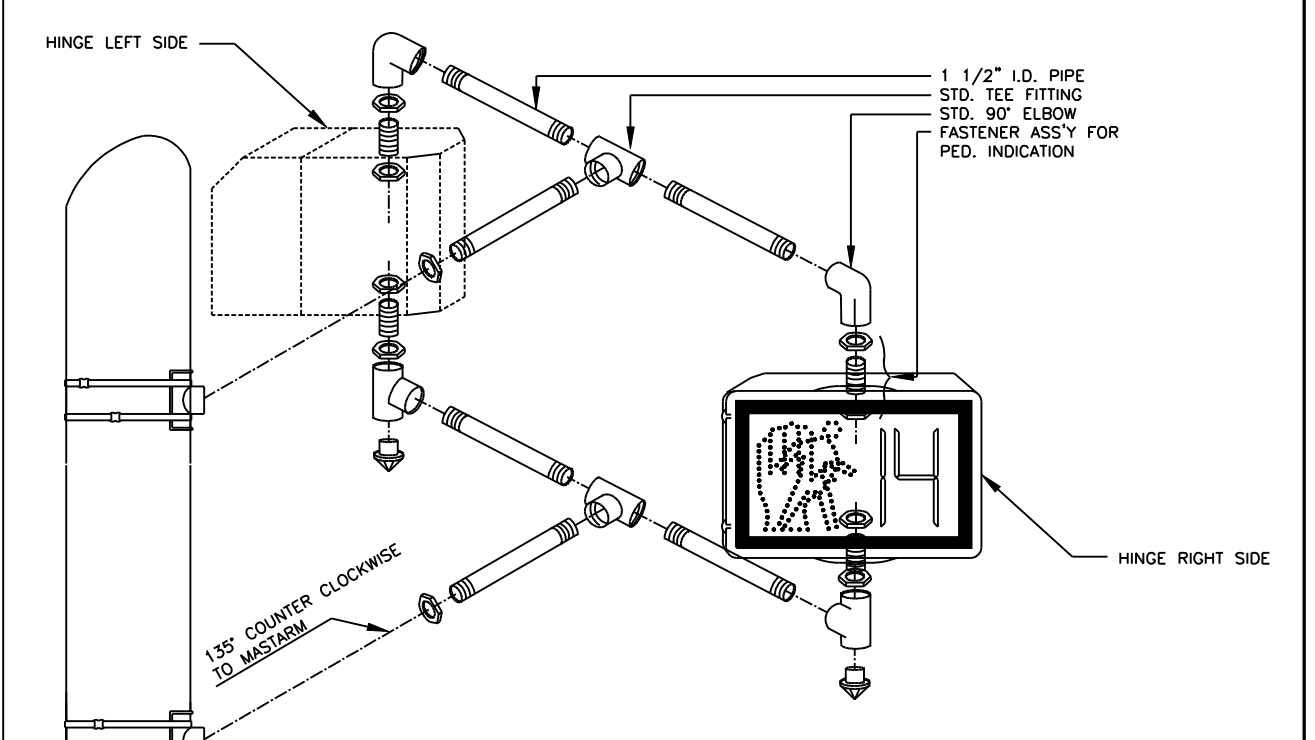
F

TYPE III SIDE-OF-POLE MOUNTING BRACKET ASSEMBLY



A

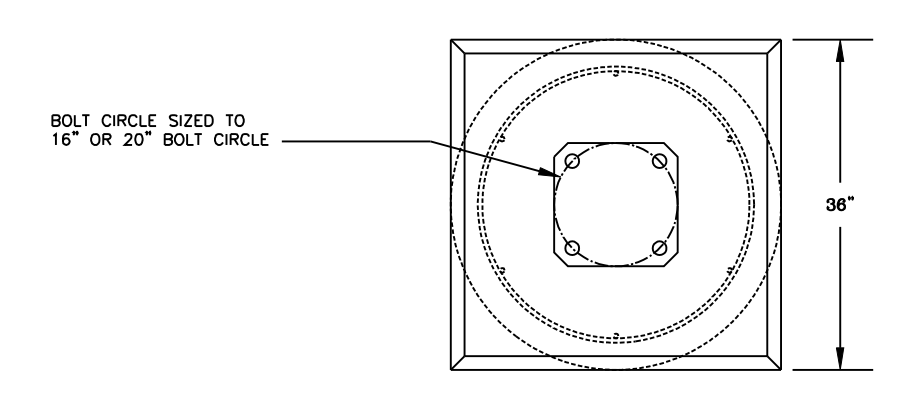
TYPE II SIGNAL MOUNTING BRACKET ASSEMBLY (SIDE-OF-POLE)



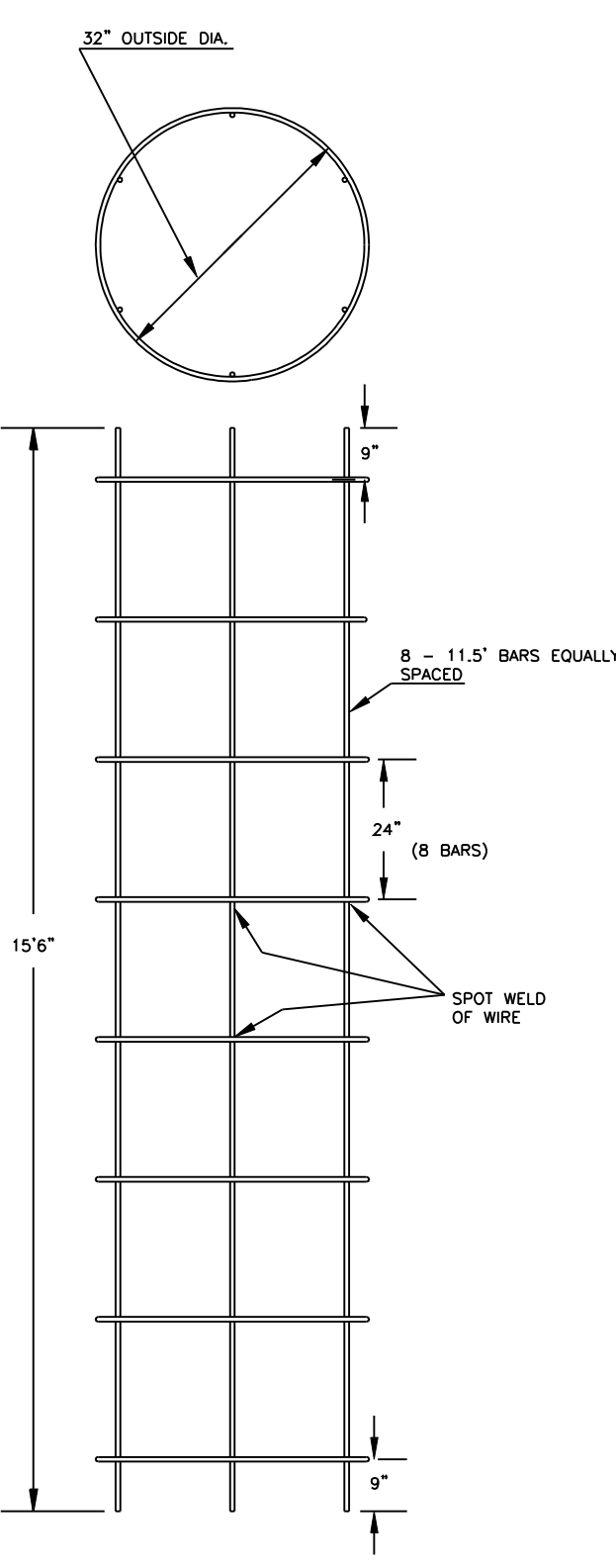
D

1. DIRECTIONAL ALIGNMENT OF PED. INDICATIONS & BRACKET(S) SHALL BE DETERMINED IN THE FIELD BY THE ENGINEER.
2. THROUGH HOLES IN THE POLE SHALL BE DRILLED AND WELL REAMED TO PREVENT CABLE CHAFING.
3. HINGE PEDESTRIAN SIGNAL DOORS AWAY FROM POLE.

GREENWICH RD. & HARRY STREET
16 FOOT BASE

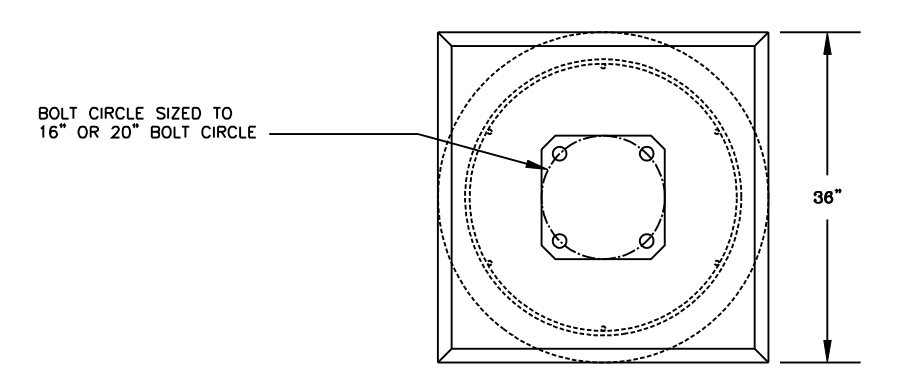


REBAR CAGE

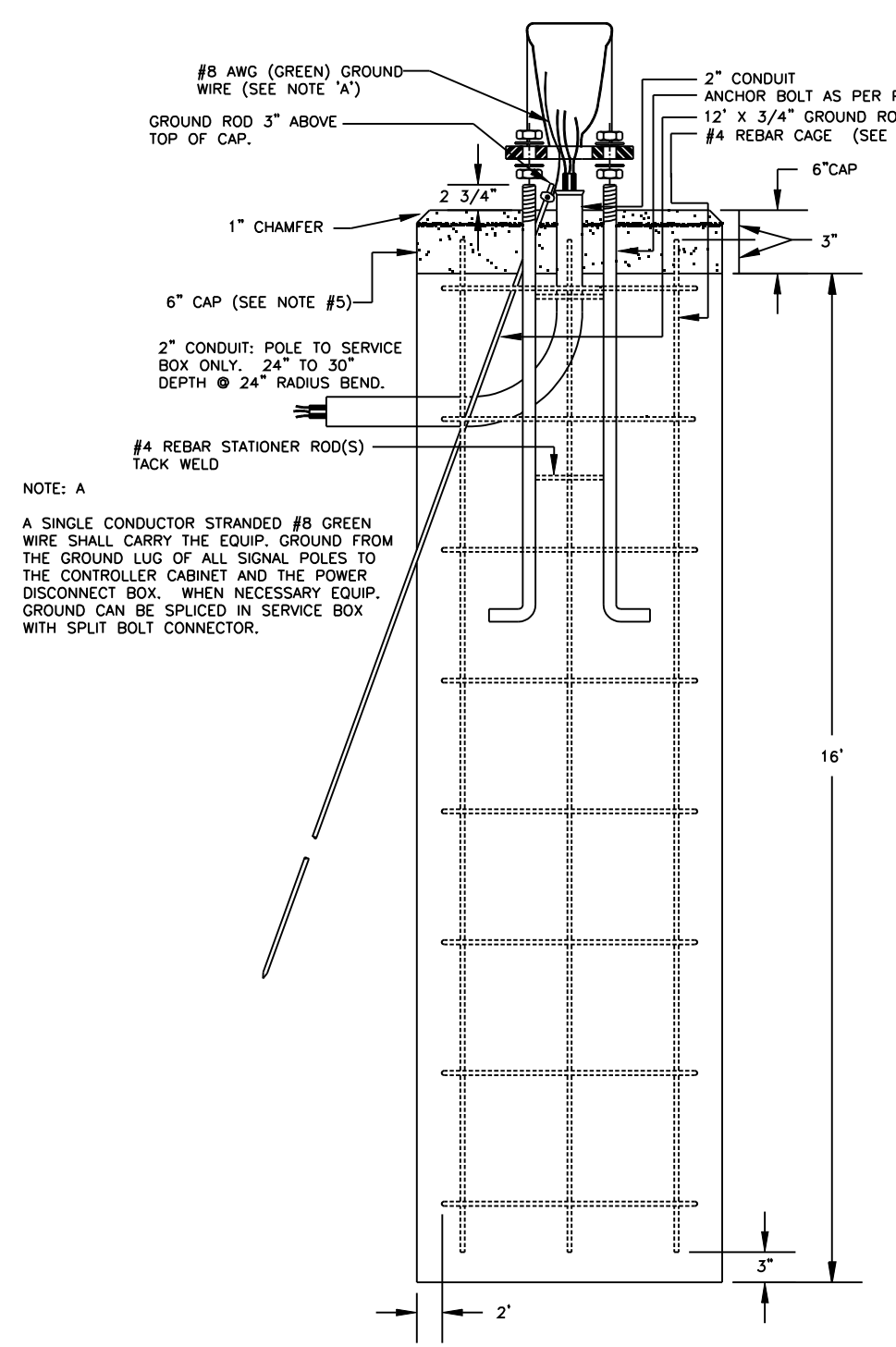
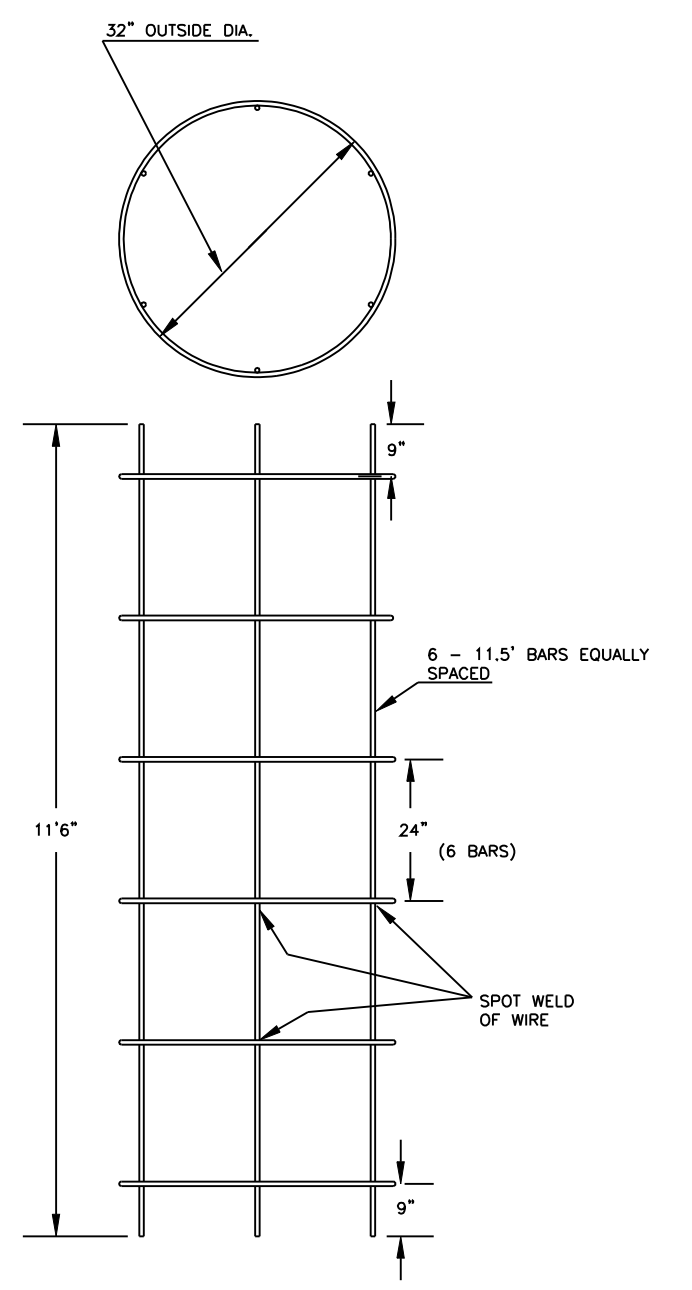


- NOTE:
1. THE ANCHOR BOLTS FOR THE SIGNAL POLE SHALL BE TACK WELDED TOGETHER IN A 16" OR 20" DIA. BOLT PATTERN (ON CENTERS AS SHOWN) TO MAINTAIN REQUIRED BOLT CONFIGURATION PATTERN AND TO AID IN VERTICAL POSITIONING WHILE CONCRETE BASE IS POURED.
 2. USE ANTI-SEIZE COMPOUND ON ALL THREADS.
 3. 12" x 3/4" GROUND ROD TO BE POSITIONED BEFORE POURING BASE.
 4. CLASS "A" CONCRETE SHALL BE USED TO CONSTRUCT BASE.
 5. CONSTRUCT A 6" THICK x 36" SQUARE CONCRETE CAP AFTER PILE HAS BEEN ERECTED & PLUMBED. CHAMFER EDGE 1". MUST BE APPROVED BY ENG. BEFORE POURED.
 6. CONDUIT SHALL HAVE PLASTIC (OR METAL) BUSHING (ABOVE BASE) TO PREVENT CABLE CHAFING.
 7. USE #6 BARE COPPER GROUND CONDUCTOR FROM CLAMP TO GROUND BOLT IN ACCESS HOLE.

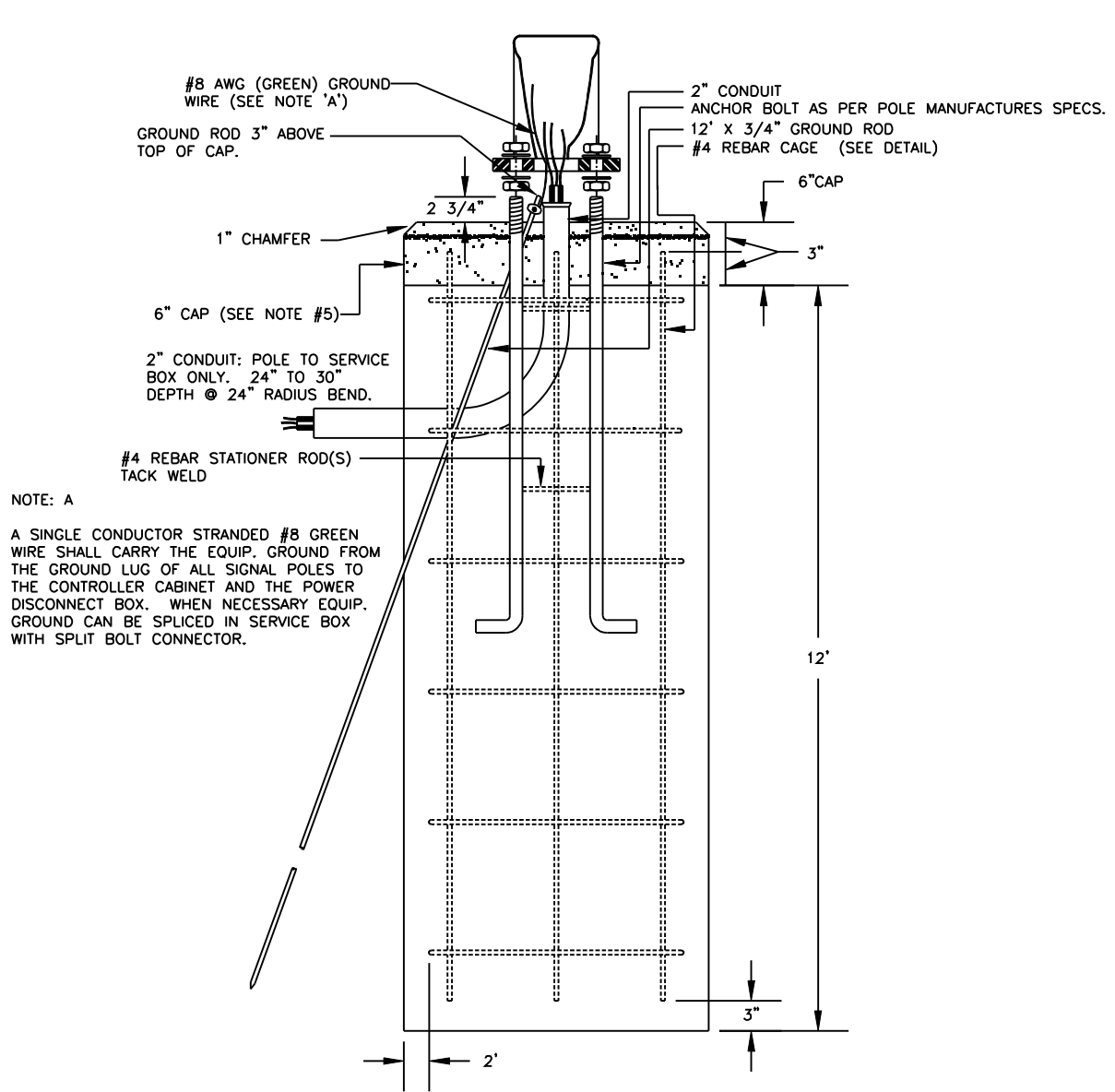
GREENWICH RD. & LINCOLN STREET
12 FOOT BASE



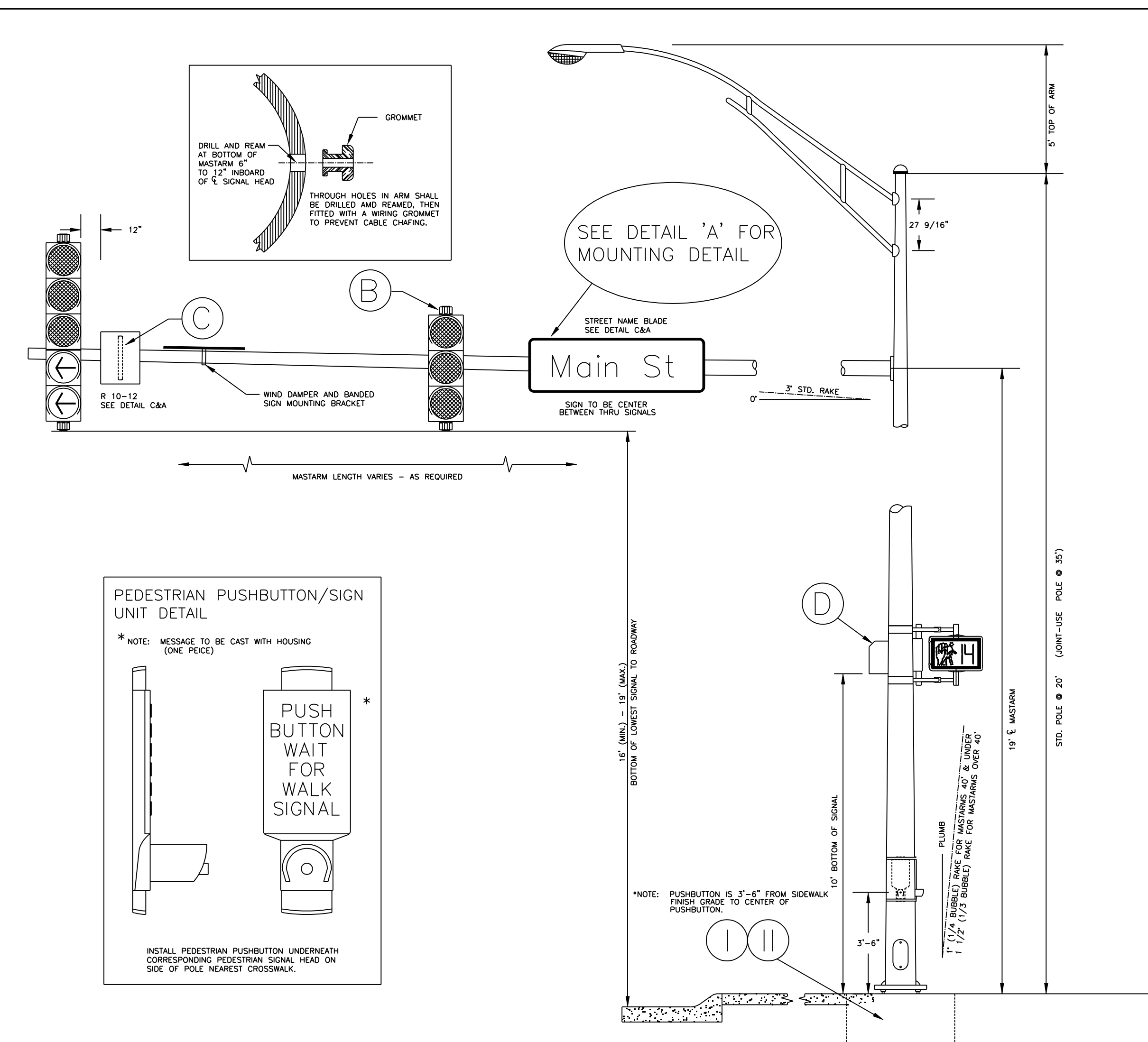
REBAR CAGE



NOTE: A
A SINGLE CONDUCTOR STRANDED #8 GREEN WIRE SHALL CARRY THE EQUIP. GROUND FROM THE GROUND LUG OF ALL SIGNAL POLES TO THE CONTROLLER CABINET AND THE POWER DISCONNECT BOX. WHEN NECESSARY EQUIP. GROUND CAN BE SPLICED IN SERVICE BOX WITH SPLIT BOLT CONNECTOR.



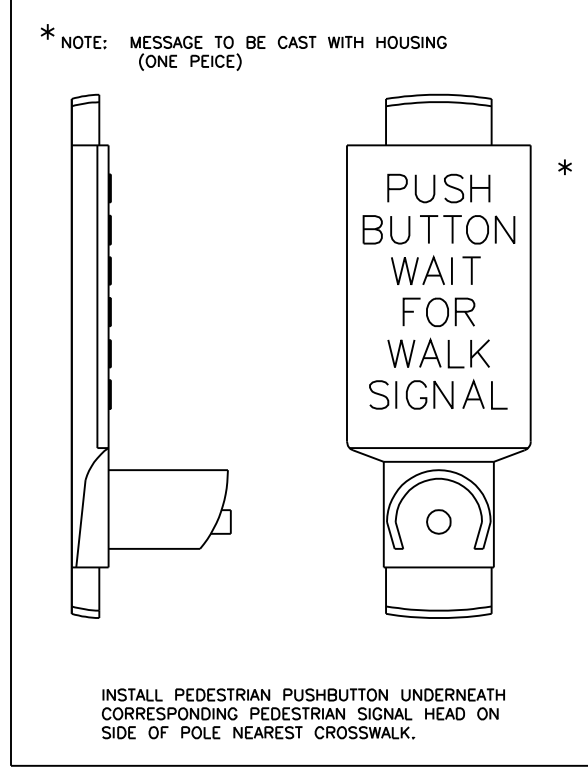
NOTE: A
A SINGLE CONDUCTOR STRANDED #8 GREEN WIRE SHALL CARRY THE EQUIP. GROUND FROM THE GROUND LUG OF ALL SIGNAL POLES TO THE CONTROLLER CABINET AND THE POWER DISCONNECT BOX. WHEN NECESSARY EQUIP. GROUND CAN BE SPLICED IN SERVICE BOX WITH SPLIT BOLT CONNECTOR.



SEE DETAIL 'A' FOR MOUNTING DETAIL

STREET NAME BLADE
SEE DETAIL C&A
Main St

PEDESTRIAN PUSHBUTTON/SIGN UNIT DETAIL



* NOTE: MESSAGE TO BE CAST WITH HOUSING (ONE PIECE)

INSTALL PEDESTRIAN PUSHBUTTON UNDERNEATH CORRESPONDING PEDESTRIAN SIGNAL HEAD ON SIDE OF POLE NEAREST CROSSWALK.

* NOTE: PUSHBUTTON IS 3'-6" FROM SIDEWALK FINISH GRADE TO CENTER OF PUSHBUTTON.

PROJECT DESCRIPTION		
STEEL SIGNAL POLE ASSEMBLY DETAILS		
PROJECT NUMBER 87 N-0386-01		
DRAWN BY: T.M.	APPROVED BY:	REvised BY: T.M.
DATE: FEB. 96		DATE: MAY, 97
CITY OF WICHITA DEPARTMENT OF PUBLIC WORKS		
ENGINEERING DIVISION PAUL GUNZELMAN, P.E.	TRAFFIC ENGINEER	SCALE NO SCALE