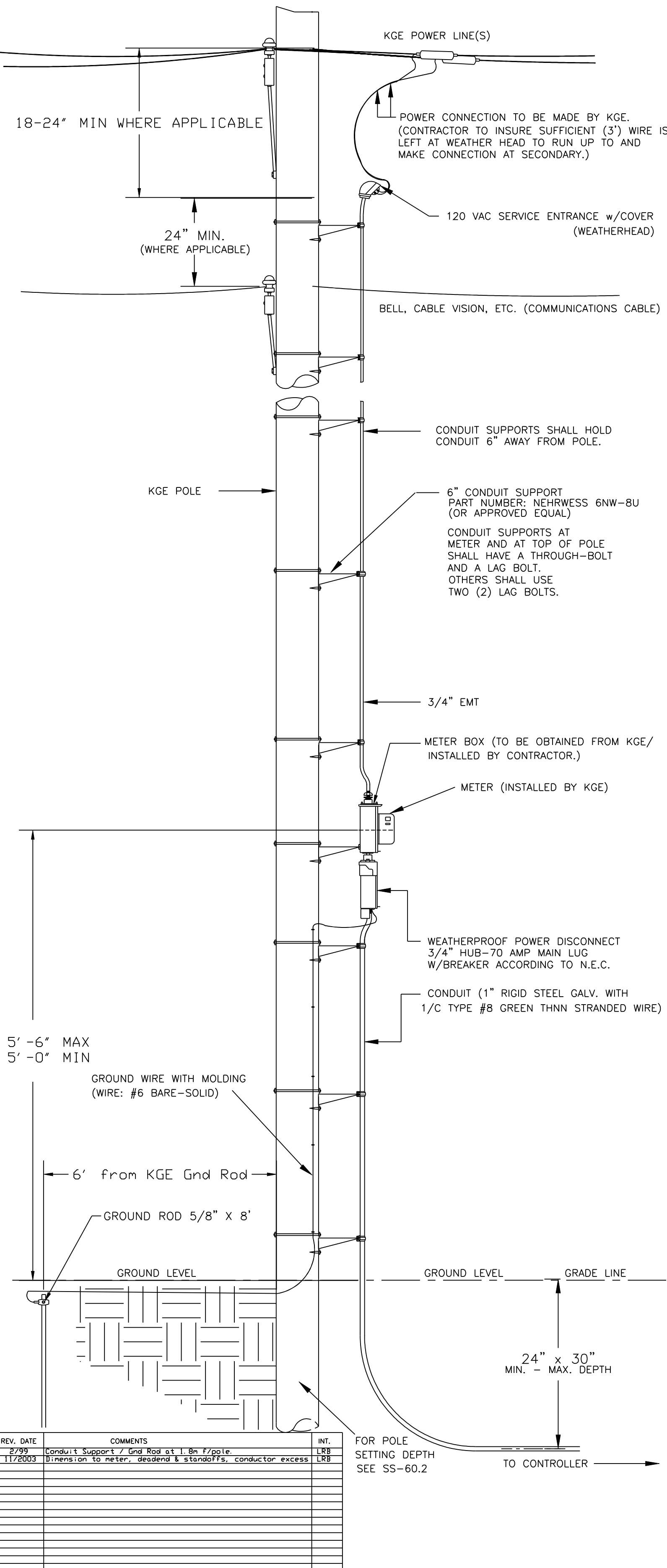
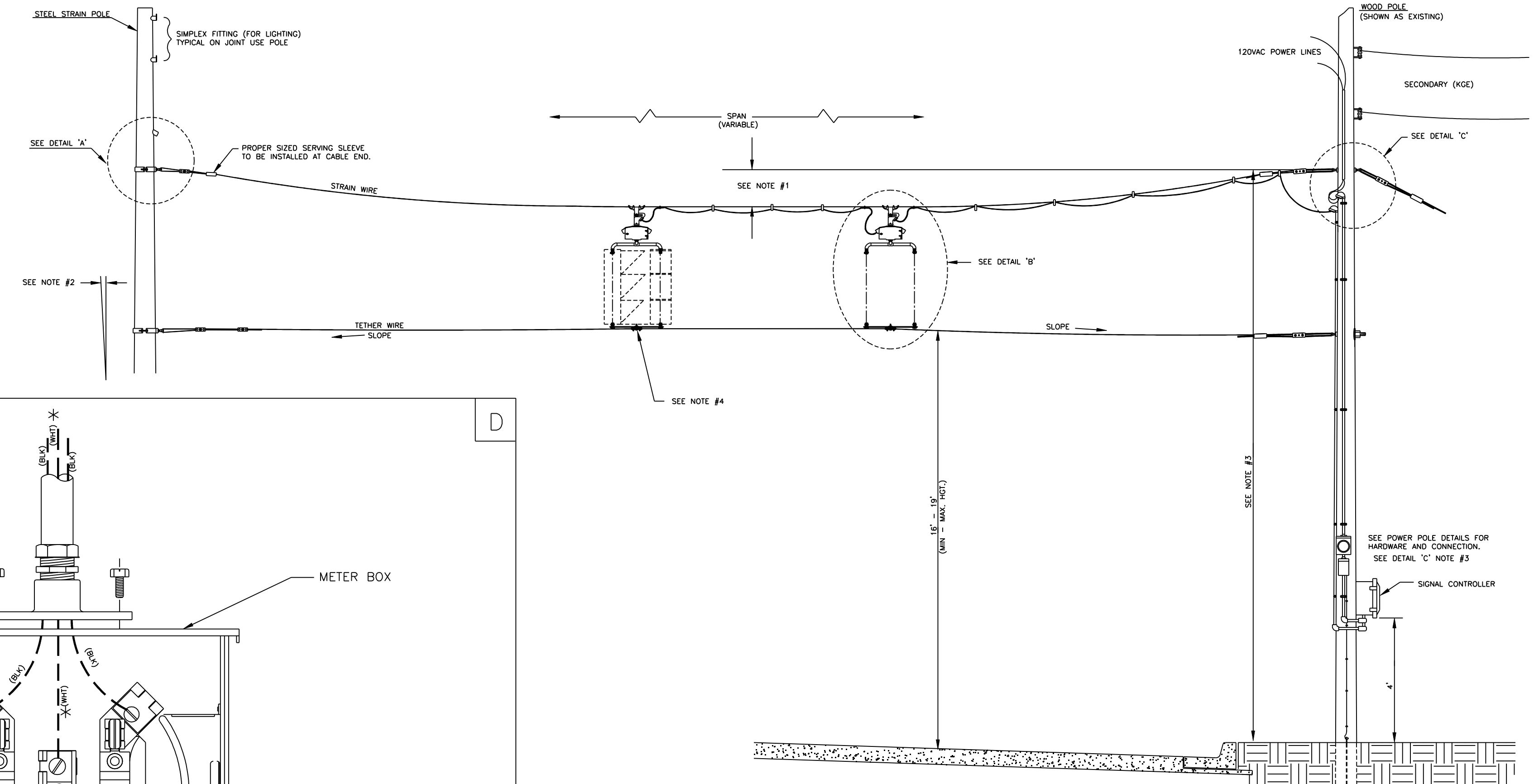


POWER POLE DETAILS



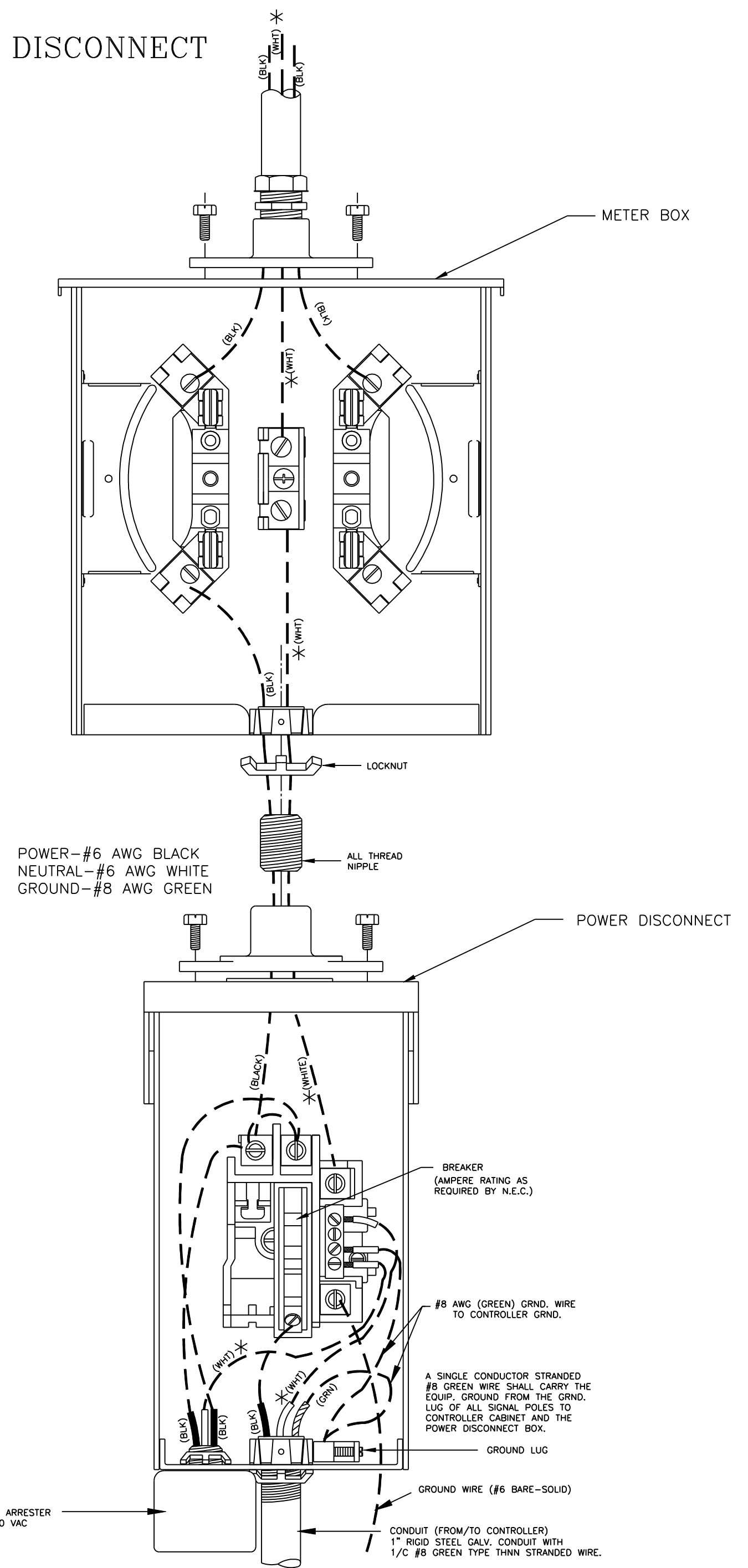
SPANWIRE ASSEMBLY DETAILS

1. MAX. SAG = 5% OF SPAN.
2. STANDARD BACKRAKE = 1.5'
3. HEIGHT OF STRAIN WIRE HOOK-UP TO BE DETERMINED BY FIELD ENGINEER. TRAFFIC SIGNAL CABLE TO BE SECURED TO STRAIN (SPAN) WIRE WEATHERABLE NYLON CABLE HANGERS (12" CTR.) DETAIL 'B'
4. TETHER CLAMP TO BE DESIGNED TO RELEASE UNDER 'HIGH WIND LOAD' TO PERMIT SIGNAL 'FREE SWING'.

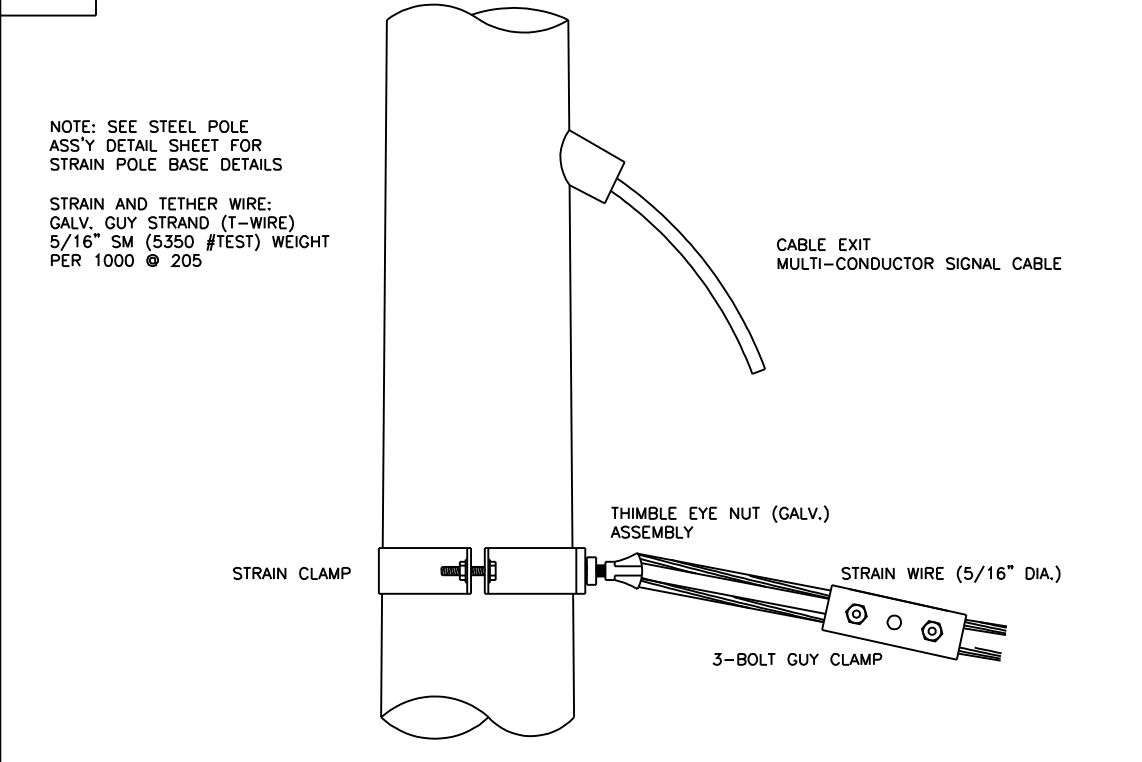


METER BOX & POWER DISCONNECT DETAILS

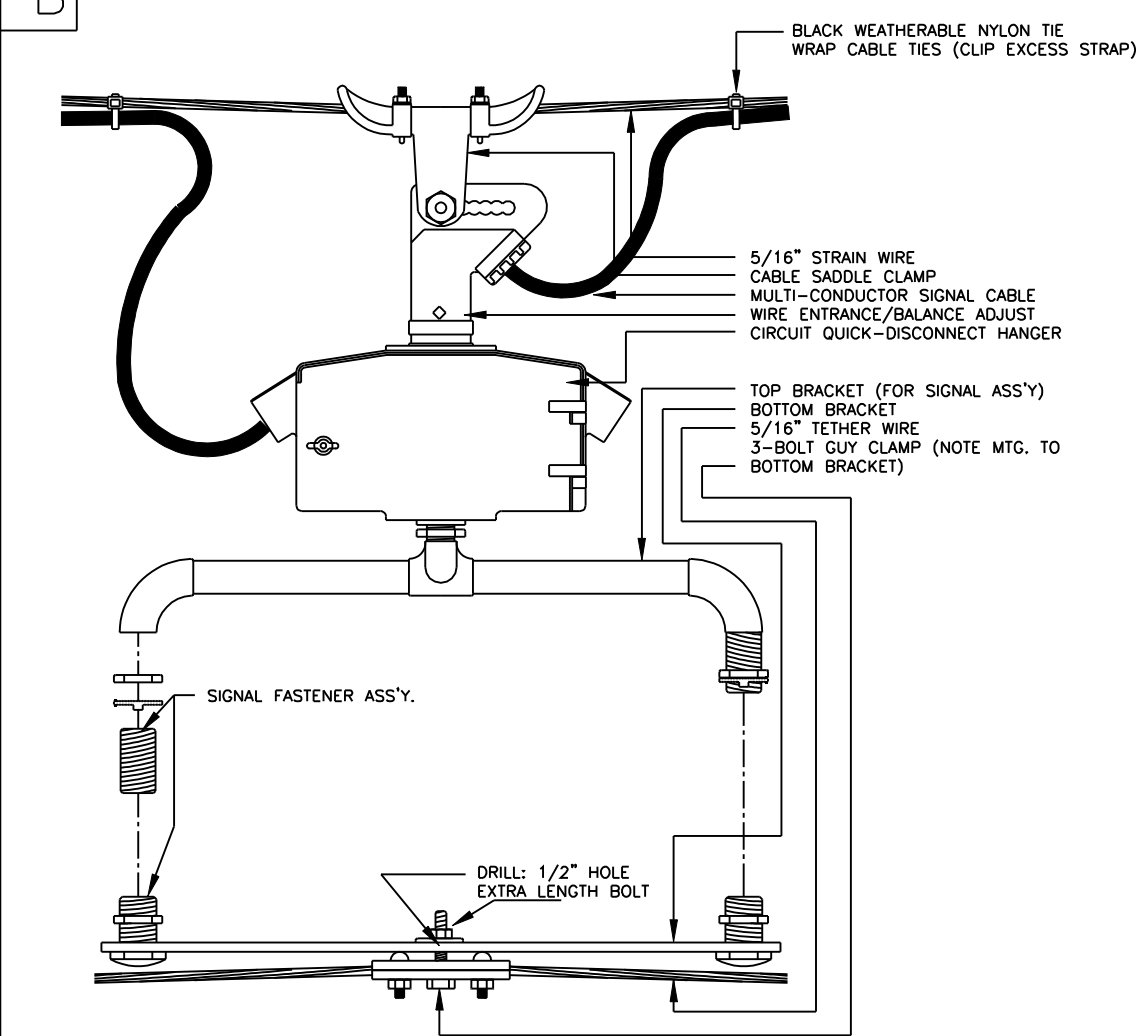
NOTE:
* TO BE MARKED WITH WHITE TAPE



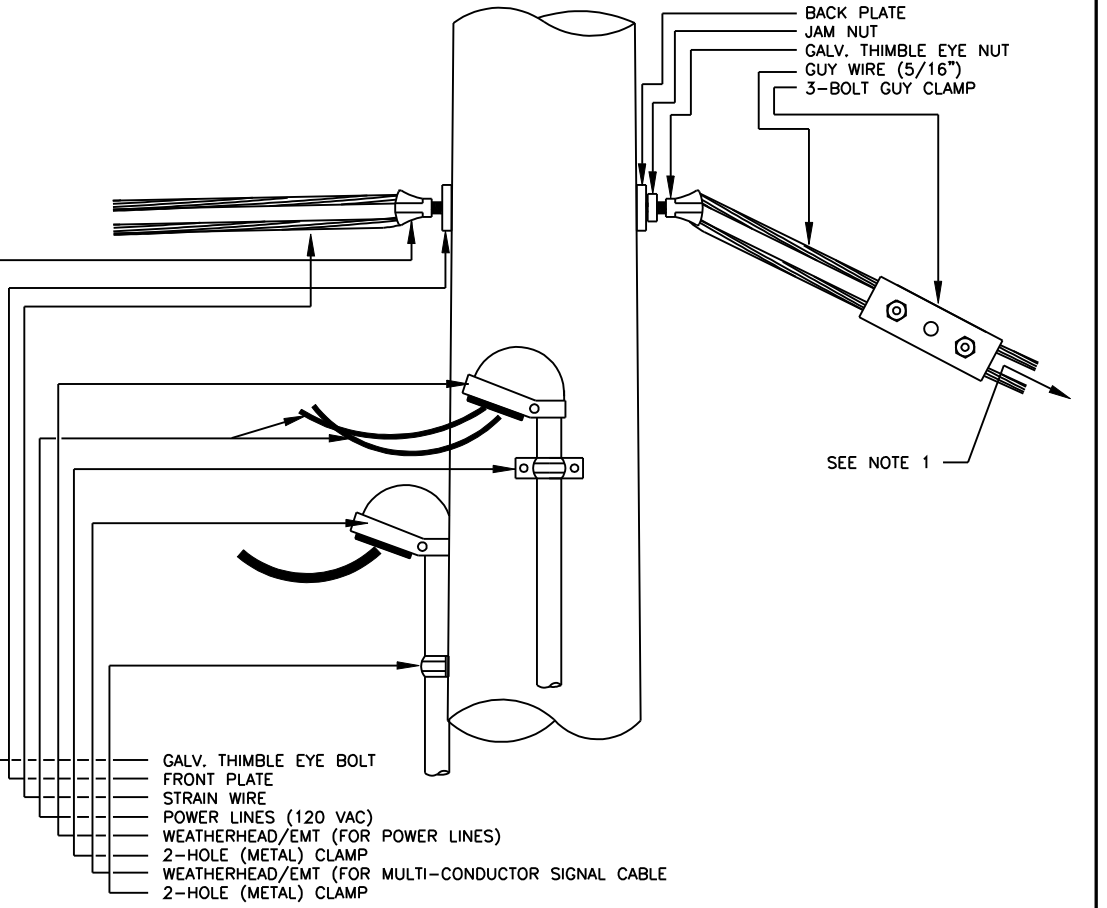
A STRAIN POLE ASSEMBLY



B SIGNAL BRACKET ASSEMBLY DETAILS



C WOOD POLE ASSEMBLY DETAILS KGE POLE EXCLUDED



POWER POLE AND SPAN POLE ASSEMBLY DETAILS

PROJECT DESCRIPTION		PROJECT NUMBER	
POWER POLE AND SPAN POLE ASSEMBLY DETAILS		87 N-0386-01	
DRAWN BY: T.M.	APPROVED BY:	REVISD BY: L. B.	
DATE: FEB. 96	DATE: 2/26/99		
CITY OF WICHITA DEPARTMENT OF PUBLIC WORKS			
DIVISION OF TRAFFIC ENGINEERING		SCALE	
PAUL GUNZELMAN, P.E. TRAFFIC ENGINEER		NO SCALE	

T. MASON, TRAFFIC ENGINEER, 2/4/97, FILE: D 18 - 899512

REV. DATE	COMMENTS	INT.
2/99	Conduit Support & Gnd Rod at 1.8m / pole	LRB
11/2003	Dimension to meter, deadend & standards, conductor excess	LRB

FOR POLE SETTING DEPTH SEE SS-60.2 TO CONTROLLER