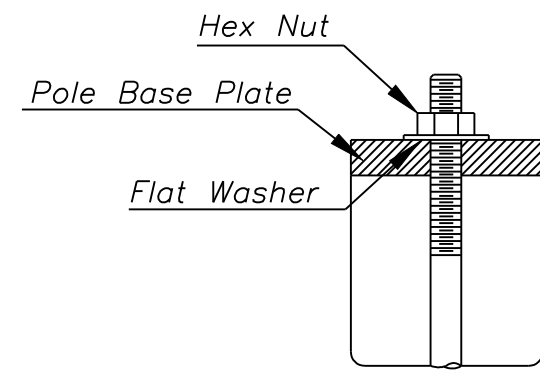
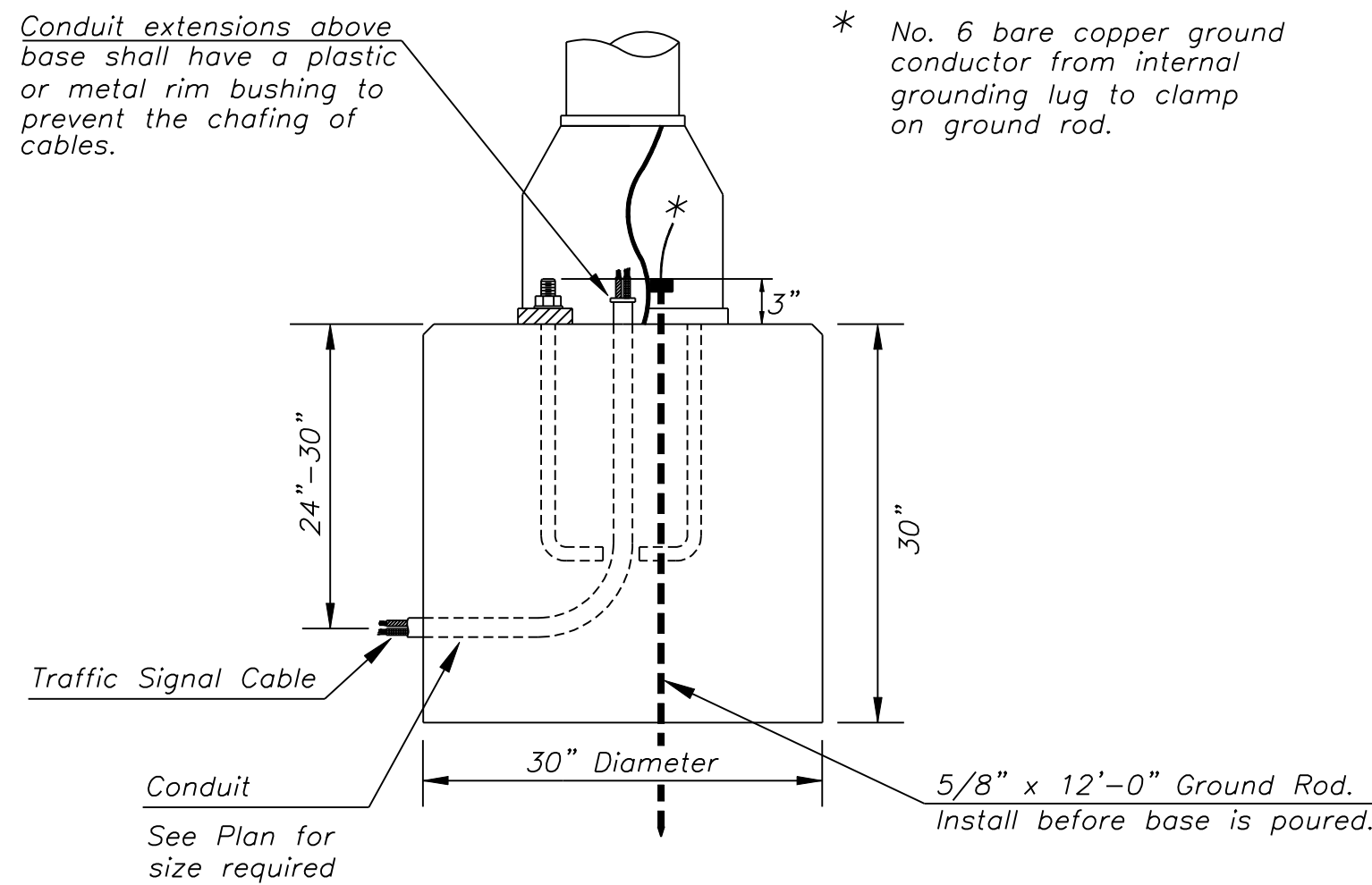
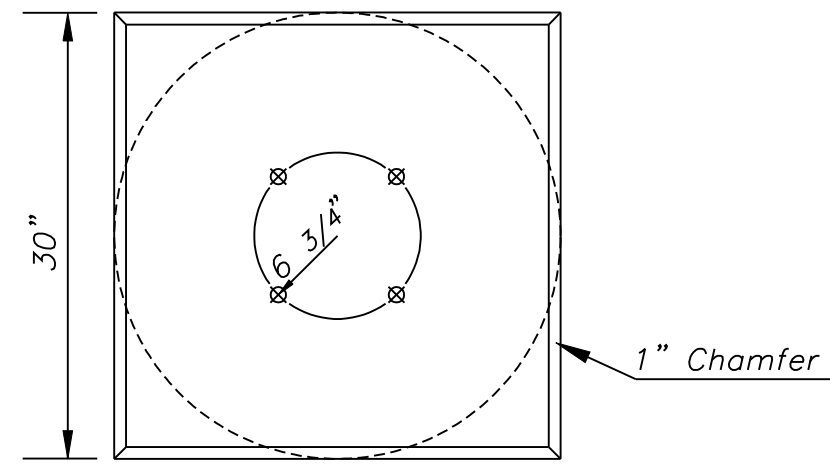


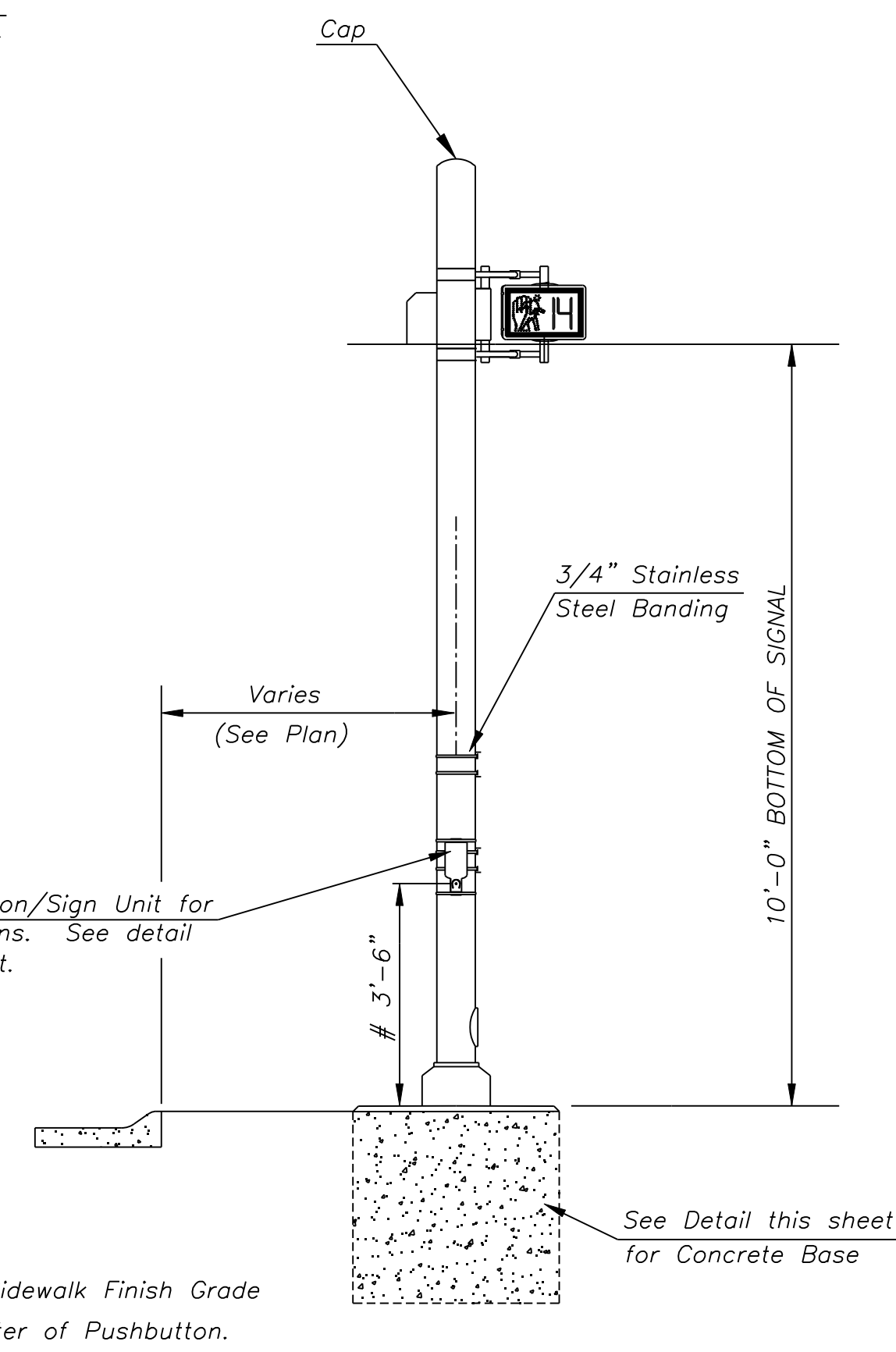
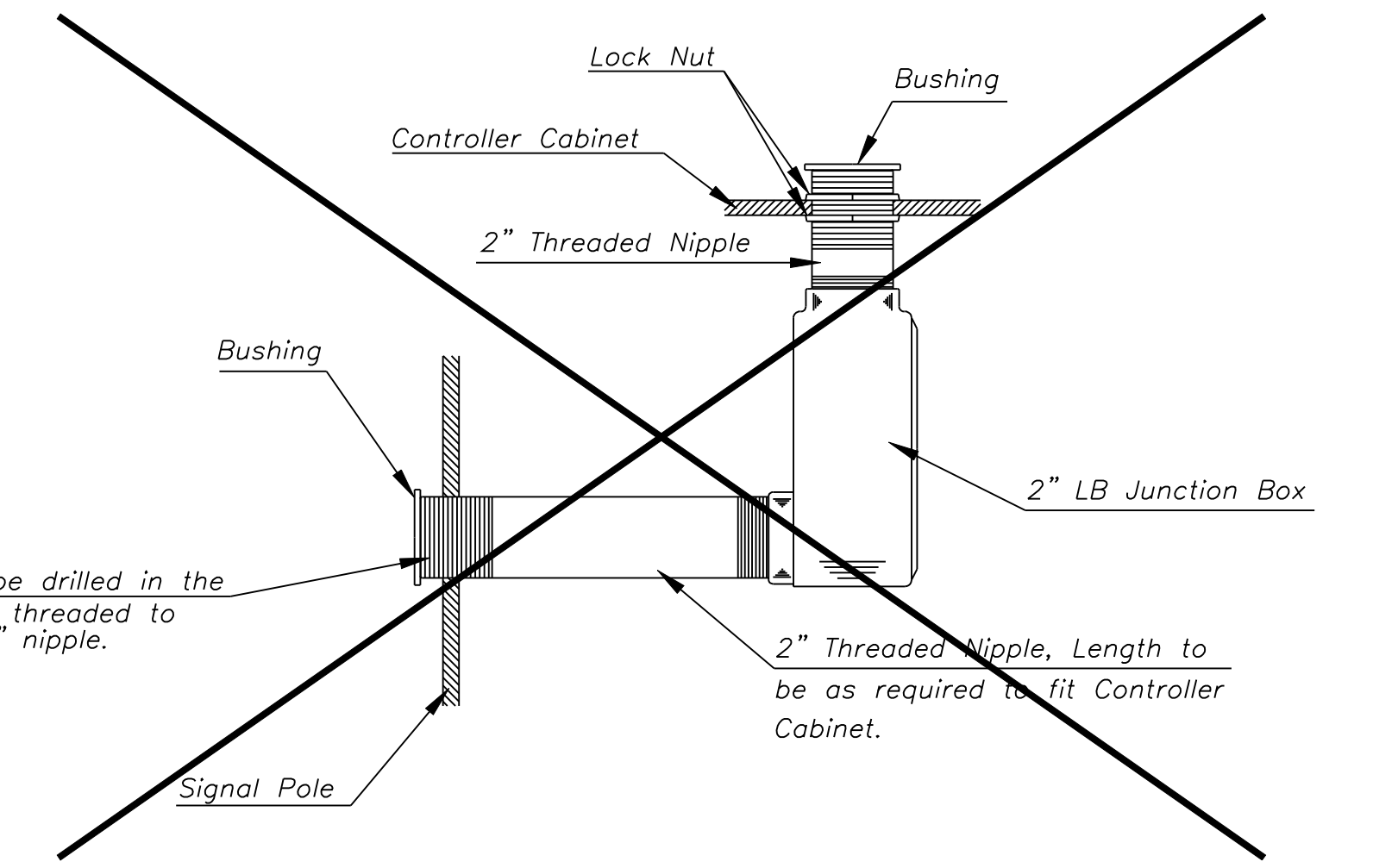
Use Keystone "No-Weld Number 1 Anti-Seize Compound" on all bolts & nuts.



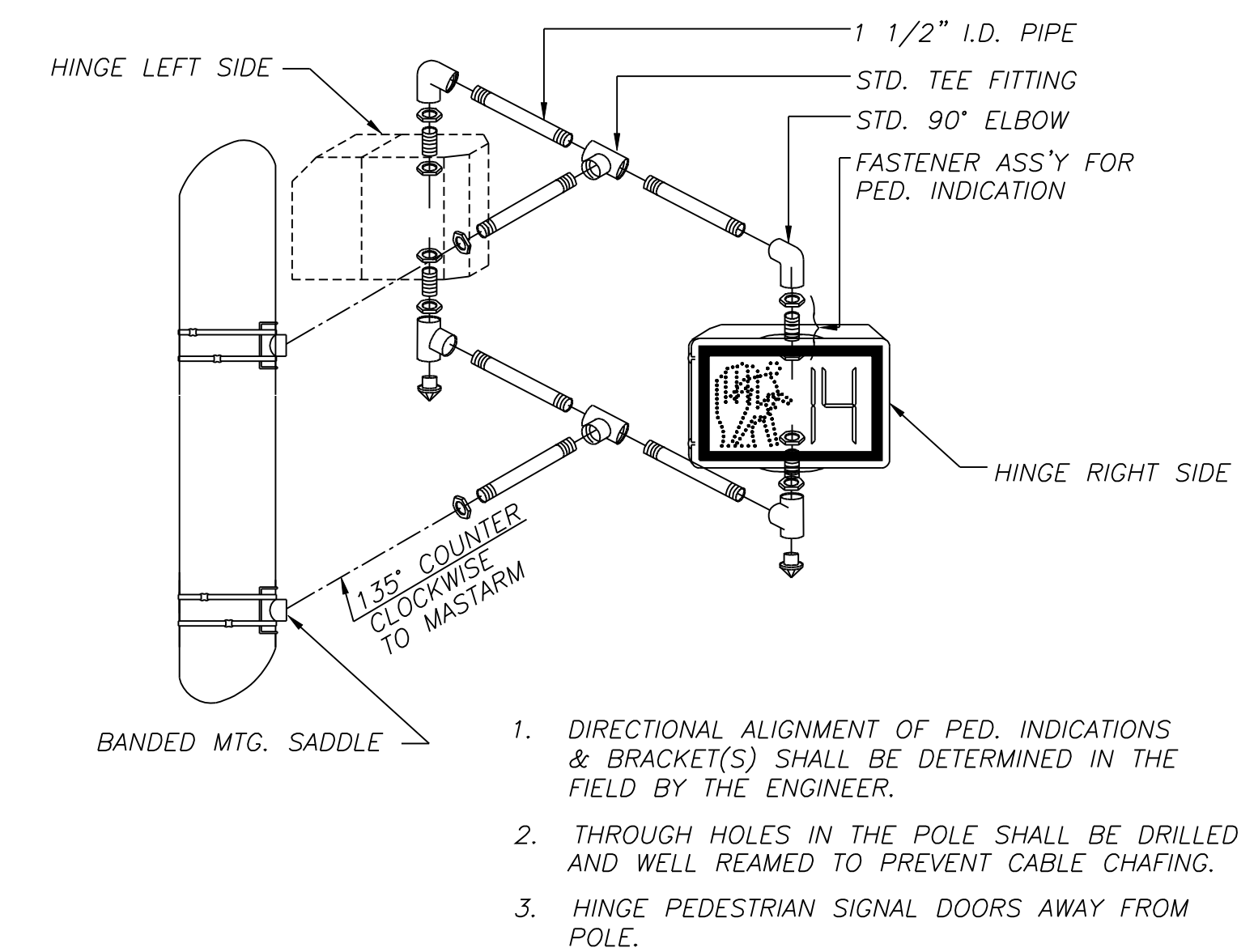
ANCHOR BOLT
DETAIL



CONCRETE BASE DETAIL



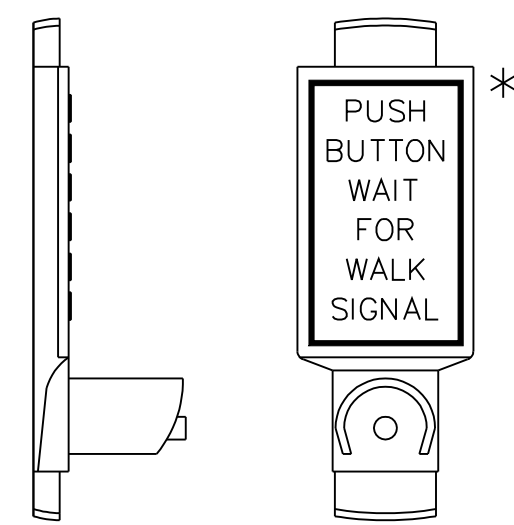
TRAFFIC SIGNAL PEDESTAL



TYPE II SIGNAL MOUNTING BRACKET ASSEMBLY
(SIDE-OF-POLE)

* NOTE: MESSAGE TO BE CAST WITH HOUSING (ONE PIECE)

INSTALL PEDESTRIAN PUSHBUTTON UNDERNEATH CORRESPONDING PEDESTRIAN SIGNAL HEAD ON SIDE OF POLE NEAREST CROSSWALK. UNIT SHALL BE FIRMLY ATTACHED TO THE SIDE OF POLE WITH 3/4\"/>



PEDESTRIAN PUSHBUTTON/SIGN
UNIT DETAIL

PROJECT DESCRIPTION		
TRAFFIC SIGNAL PEDESTAL & CONCRETE BASE DETAIL SHEET		
PROJECT NUMBER 87 N-0386-01		
DRAWN BY: T.M.	SCALE NO SCALE	REVISED BY:
DATE: MAY 97		DATE:
CITY OF WICHITA DEPARTMENT OF PUBLIC WORKS		
ENGINEERING DIVISION PAUL GUNZELMAN, P.E. TRAFFIC ENGINEER		SHEET 154 OF 255