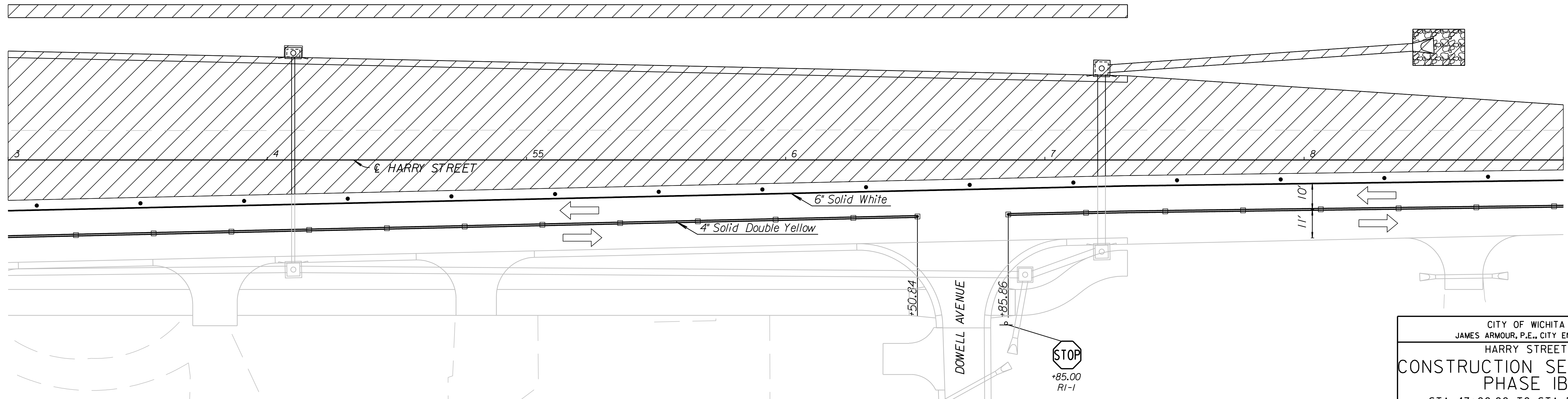
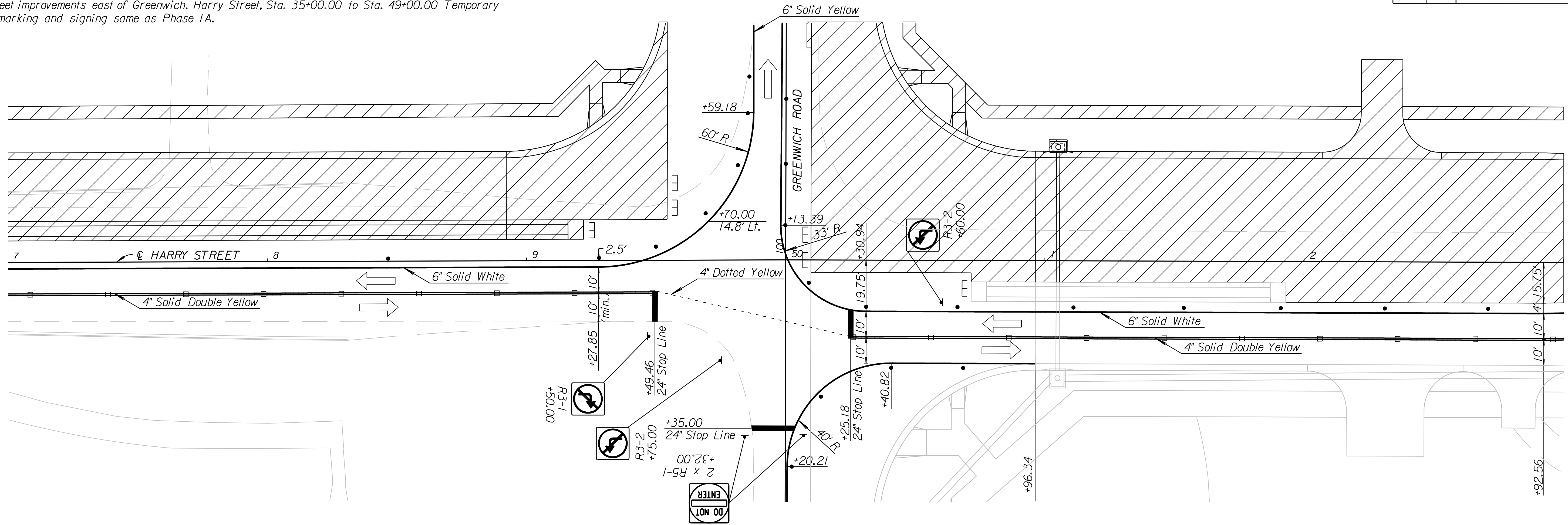
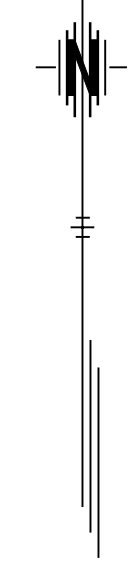


COUNTY	STATE	PROJECT NO.	YEAR	SHEET NO.	TOTAL SHEETS
SEDGWICK	KANSAS	87 N-0386-01	2009	179	255

Phase IB - Harry Street

With two-way Harry traffic on the newly constructed eastbound lanes, construct the northern half of the Harry Street improvements east of Greenwich. Harry Street, Sta. 35+00.00 to Sta. 49+00.00 Temporary pavement marking and signing same as Phase IA.



K:\35751A\CADD\SHEETS\TRAFFIC\SEQUENCE\PHASE IB\HARRYPH02B.dgn
 SURV. PLOT CADD DES. RAN DR. JR TR. CKD. JUR APP.

CITY OF WICHITA JAMES ARMOUR, P.E., CITY ENGINEER		
HARRY STREET CONSTRUCTION SEQUENCING PHASE IB		
STA. 47+00.00 TO STA. 59+00.00		
 PARSONS BRINCKERHOFF <small>Wichita, Kansas</small>		
SCALE 1"=20'	DATE 11/23/2009	DWG. NO. 35751A