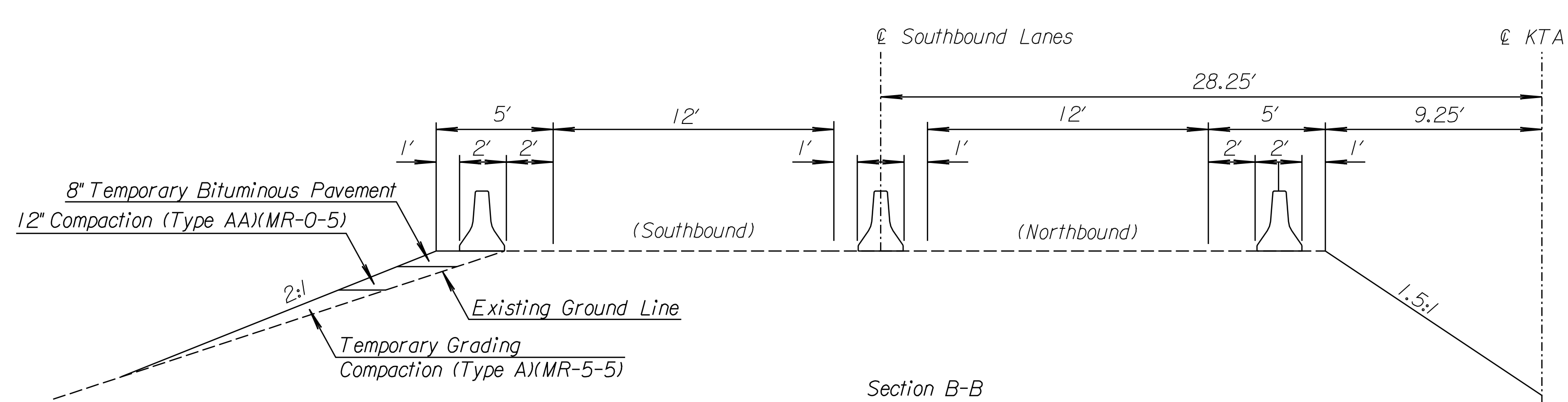
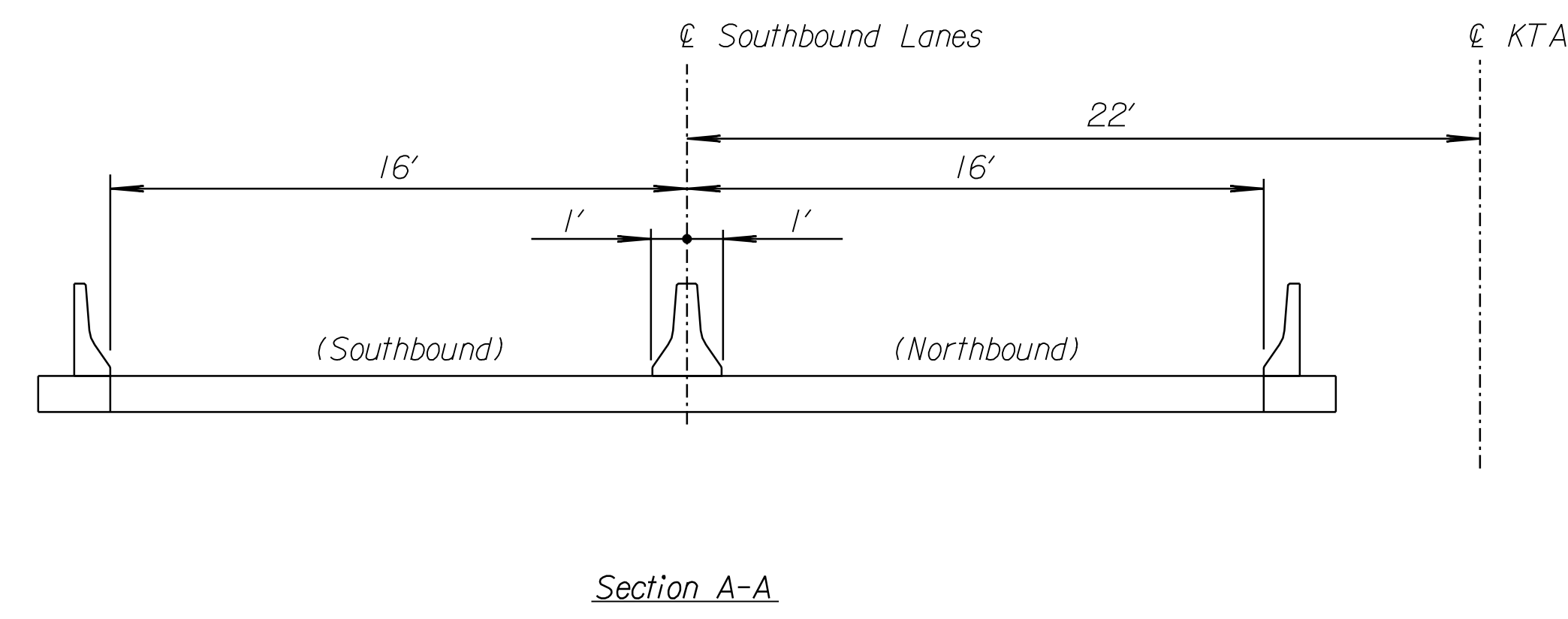
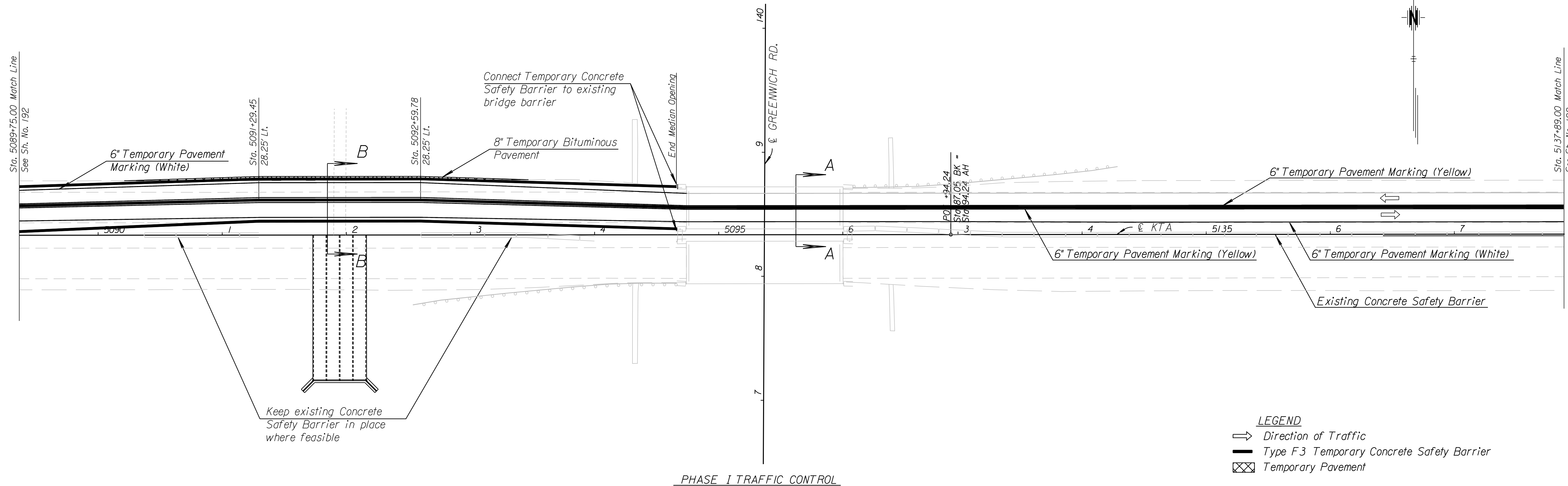


COUNTY	STATE	PROJECT NO.	YEAR	SHEET NO.	TOTAL SHEETS
SEDGWICK	KANSAS	87 N-0386-01	2009	193	255



- Notes:**
1. Design speed for KTA temporary traffic control is 60 mph.
 2. Contractor to Submit Shoring plans prior to KTA closures.
 3. Contractor to fill holes caused by placement of temporary Concrete Safety Barrier with approved grout
 4. Compaction as per KDOT Standard Specification, Latest Edition.

CITY OF WICHITA
 JAMES ARMOUR, P.E., CITY ENGINEER
 KTA STRUCTURE
**TRAFFIC CONTROL
 PHASE I**
 BRIDGE DETAILS

**PB PARSONS
 BRINCKERHOFF**
 Wichita, Kansas

SCALE 1"=40' DATE 11/23/2009 DWG. NO. 35751A

K:\35751A\CADD\SHEETS\TRAFFIC\TCP\KTA\KTAIBR.dgn SURV. PLOT CADD DES. JRI TR. CKD. JJR APP.