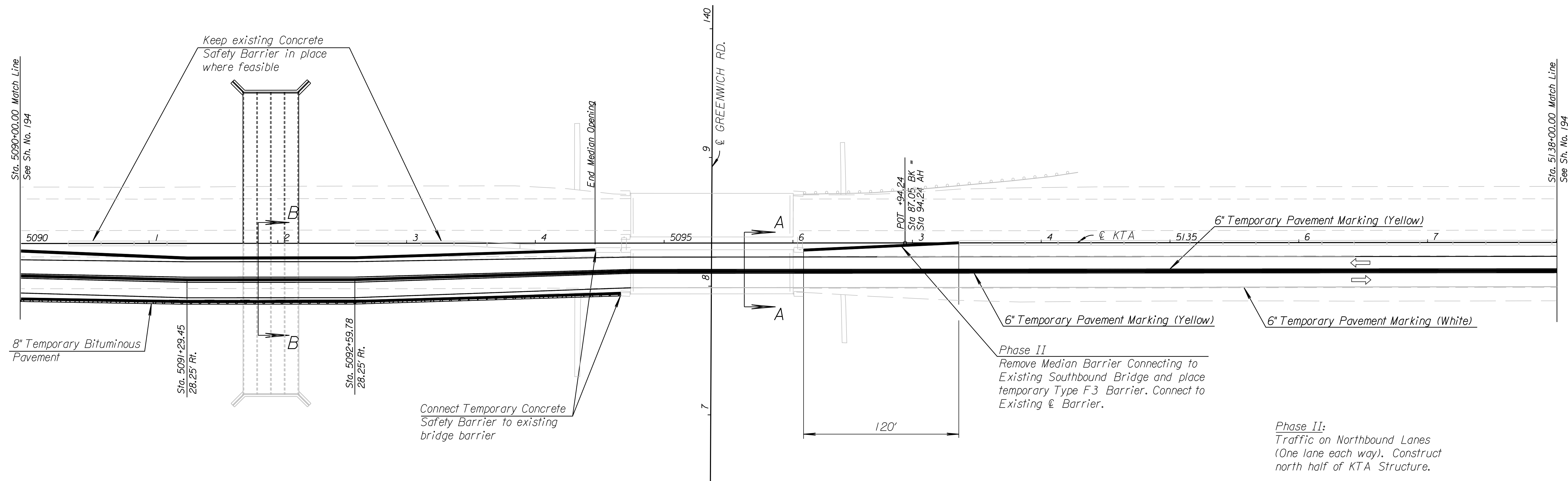


COUNTY	STATE	PROJECT NO.	YEAR	SHEET NO.	TOTAL SHEETS
SEDGWICK	KANSAS	87 N-0386-01	2009	195	255



Connect Temporary Concrete Safety Barrier to existing bridge barrier

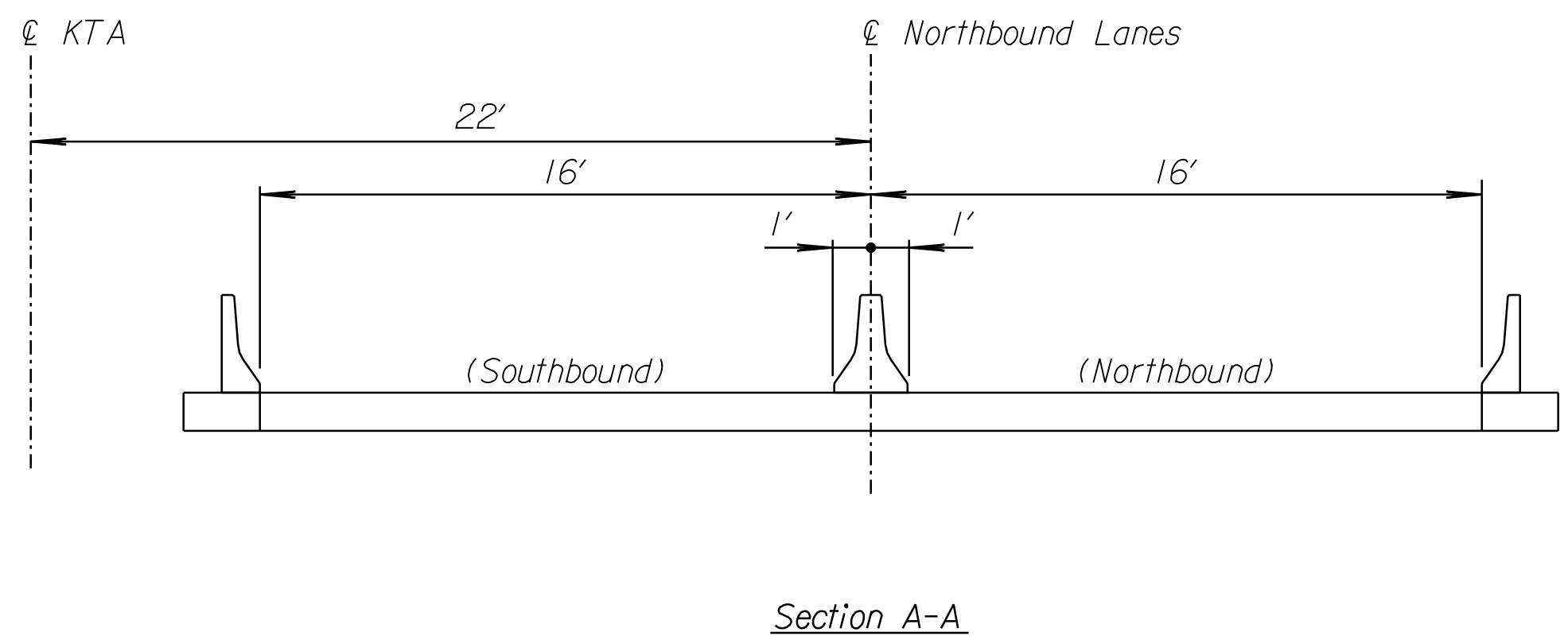
Phase II
Remove Median Barrier Connecting to Existing Southbound Bridge and place temporary Type F3 Barrier. Connect to Existing ϵ Barrier.

Phase II:
Traffic on Northbound Lanes (One lane each way). Construct north half of KTA Structure.

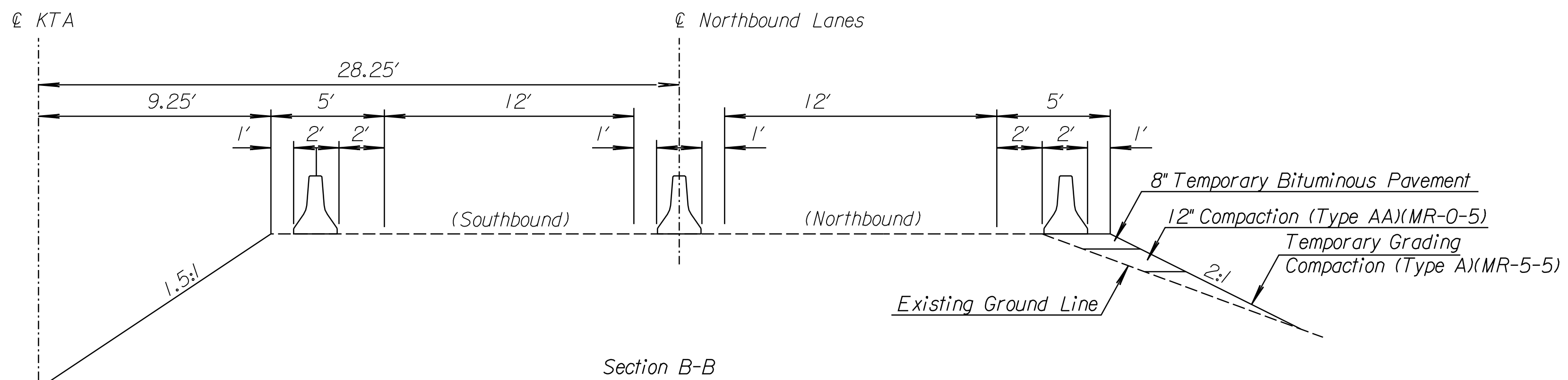
PHASE II TRAFFIC CONTROL

LEGEND

\Rightarrow	Direction of Traffic
—	Type F3 Temporary Concrete Safety Barrier
\otimes	Temporary Pavement



Section A-A



Section B-B

- Notes:
1. Design speed for KTA temporary traffic control is 60 mph.
 2. Contractor to Submit Shoring plans prior to KTA closures.
 3. Contractor to fill holes caused by placement of temporary Concrete Safety Barrier with approved grout
 4. Compaction as per KDOT Standard Specification, Latest Edition.

CITY OF WICHITA
JAMES ARMOUR, P.E., CITY ENGINEER
KTA STRUCTURE
TRAFFIC CONTROL
PHASE II
BRIDGE DETAILS

PB PARSONS
BRINCKERHOFF
Wichita, Kansas

SCALE 1"=40' DATE 11/23/2009 DWG. NO. 3575IA

K:\3575IA\CADD\SHEETS\TRAFFIC\TCP\KTA\KTA2BR.dgn SURV. PLOT CADD DES. JR DR. CKD. JR APP.