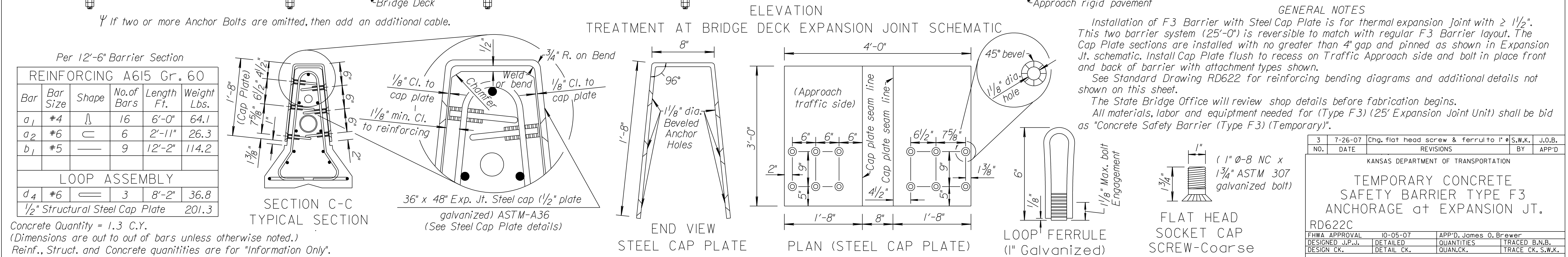
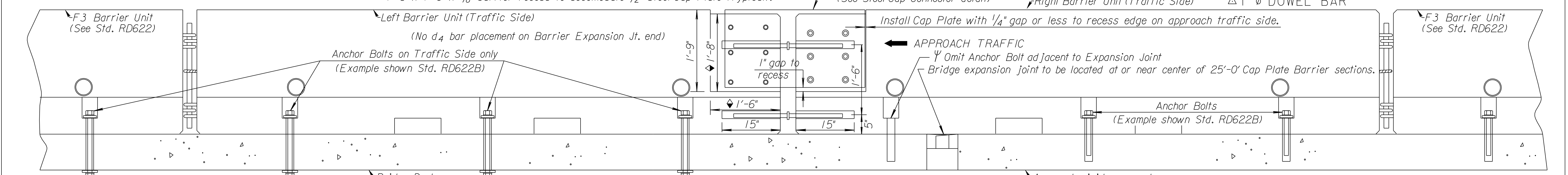
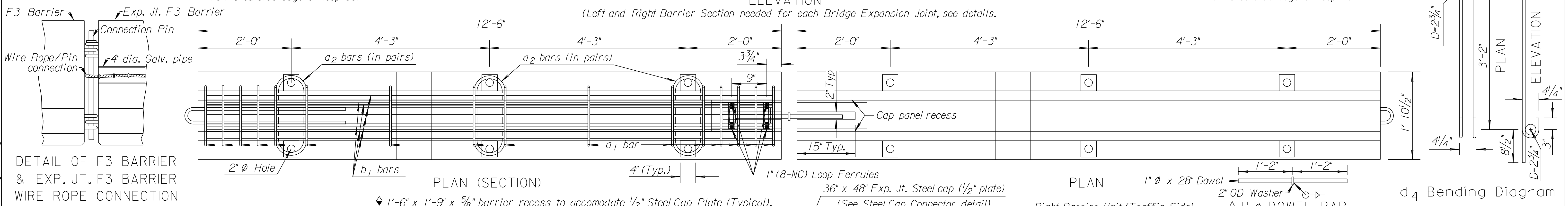
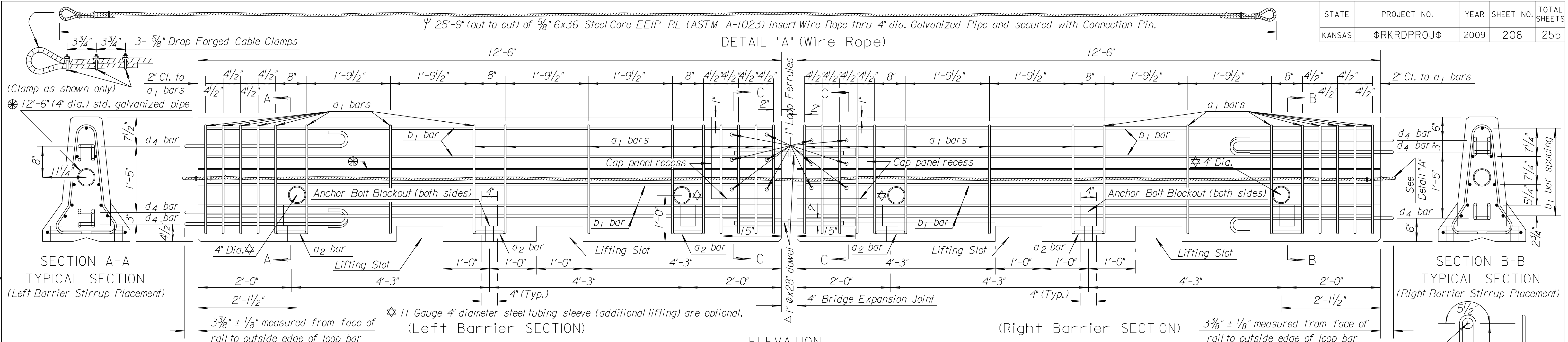


STATE	PROJECT NO.	YEAR	SHEET NO.	TOTAL SHEETS
KANSAS	\$KRDRPROJ\$	2009	208	255

Note to Designer: This F3 Barrier Anchorage at Expansion Joint is only for use on bridges with thermal expansion of 1/2" or greater at the recommendation and review of Bridge Designer. Bridges longer than 1,000 feet require a Special Design.



Per 12'-6" Barrier Section

Bar	Bar Size	Shape	No. of Bars	Length Ft.	Weight Lbs.
a ₁	#4	U	16	6'-0"	64.1
a ₂	#6	C	6	2'-11"	26.3
b ₁	#5	—	9	12'-2"	114.2

LOOP ASSEMBLY					
Bar	Bar Size	Shape	No. of Bars	Weight Lbs.	
d ₄	#6	—	3	8'-2"	36.8
1/2" Structural Steel Cap Plate				201.3	

Concrete Quantity = 1.3 C.Y.
 (Dimensions are out to out of bars unless otherwise noted.)
 Reinf., Struct. and Concrete quantities are for "Information Only".

GENERAL NOTES

Installation of F3 Barrier with Steel Cap Plate is for thermal expansion joint with $\geq 1/2"$. This two barrier system (25'-0") is reversible to match with regular F3 Barrier layout. The Cap Plate sections are installed with no greater than 4" gap and pinned as shown in Expansion Jt. schematic. Install Cap Plate flush to recess on Traffic Approach side and bolt in place front and back of barrier with attachment types shown.

See Standard Drawing RD622 for reinforcing bending diagrams and additional details not shown on this sheet.

The State Bridge Office will review shop details before fabrication begins.

All materials, labor and equipment needed for (Type F3) (25' Expansion Joint Unit) shall be bid as "Concrete Safety Barrier (Type F3) (Temporary)".

3	7-26-07	Cng. flat head screw & ferrule to 1" S.W.K.	J.O.B.
NO.	DATE	REVISIONS	BY
KANSAS DEPARTMENT OF TRANSPORTATION			
TEMPORARY CONCRETE SAFETY BARRIER TYPE F3 ANCHORAGE at EXPANSION JT. RD622C			
FHWA APPROVAL	10-05-07	APP'D. James O. Brewer	J.O.B.
DESIGNED J.P.J.	DETAILED	QUANTITIES	TRACED B.N.B.
DESIGN CK.	DETAIL CK.	QUAN. CK.	TRACE CK. S.W.K.

Drawn By: Plotted: 11/24/2009 File: K:\35751ACADD\SHEETS\STANDARDS\KDOT\STD622C.dgn