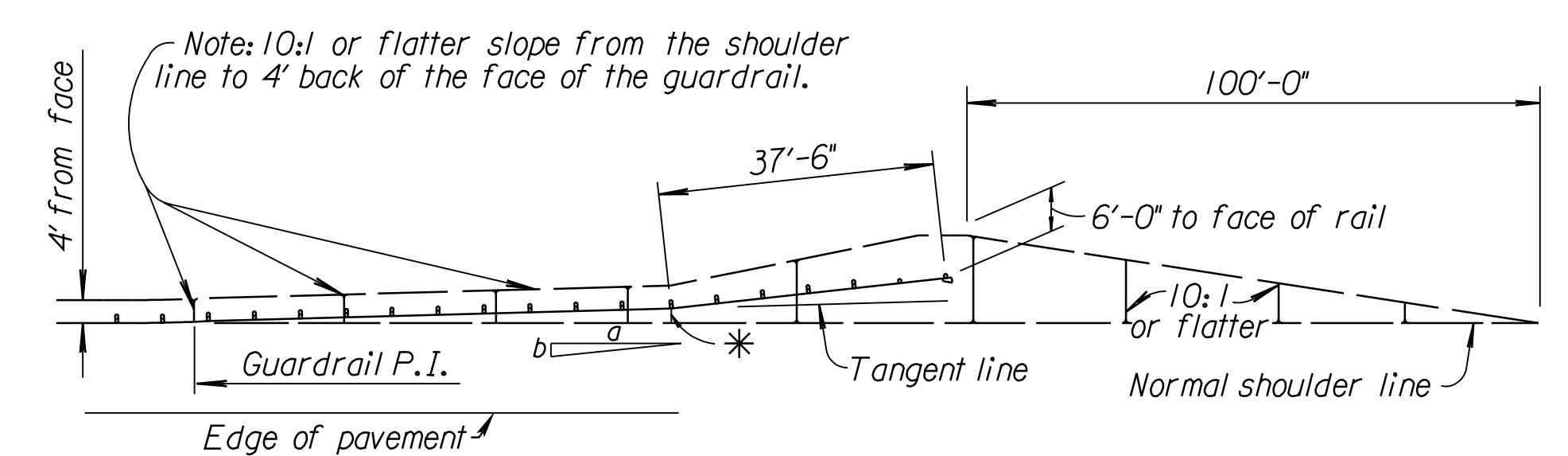
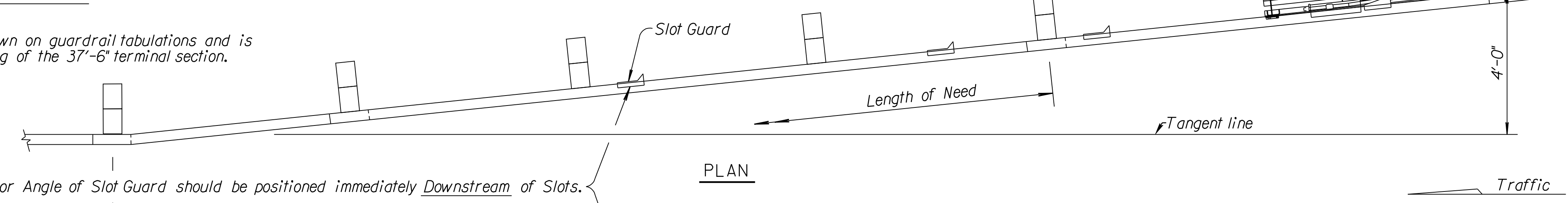


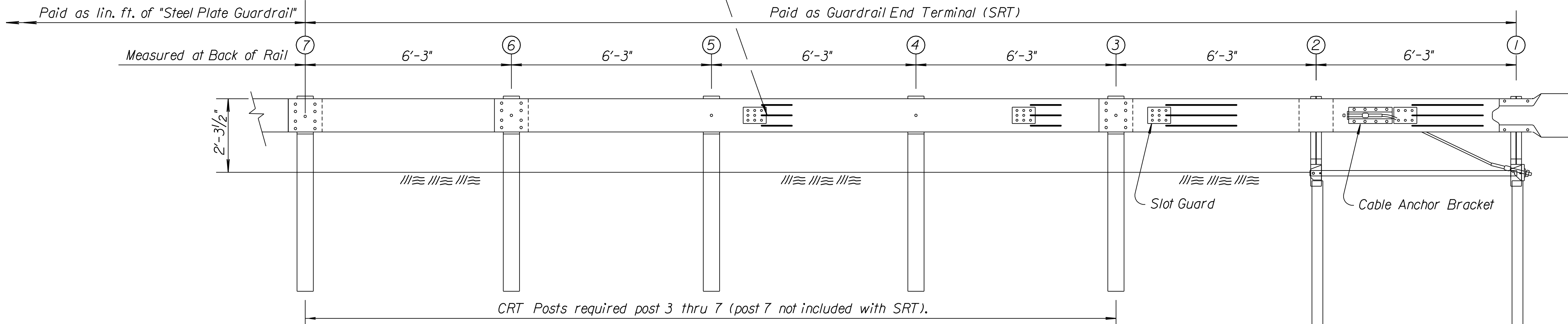
STATE	PROJECT NO.	YEAR	SHEET NO.	TOTAL SHEETS
KANSAS	87 N-0386-01	2009	210	255



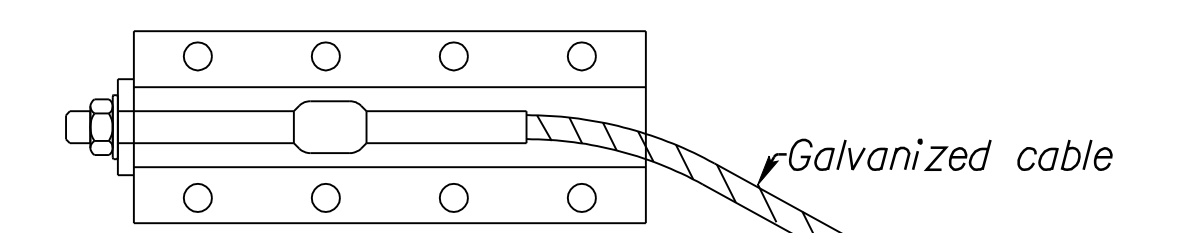
* "K" is the distance shown on guardrail tabulations and is measured at the beginning of the 37'-6" terminal section.



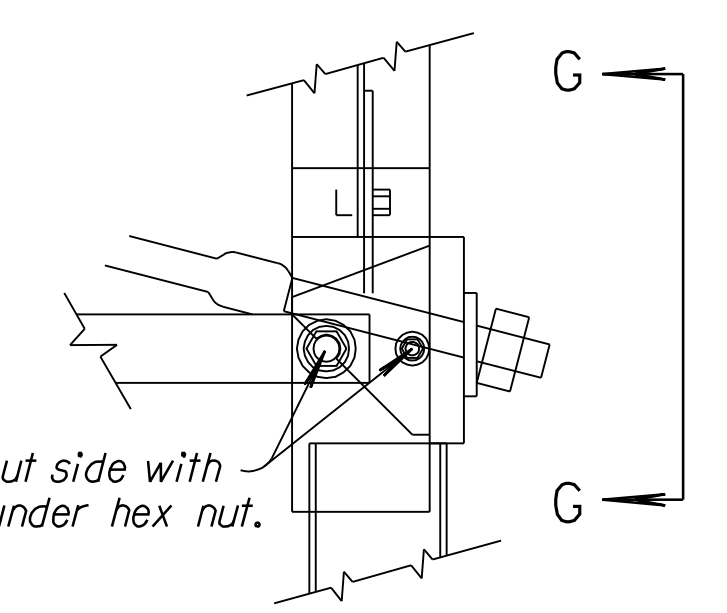
GENERAL NOTE
 See RD611 & RD613 for details of guardrail not shown.
 Slotted Rail Terminal posts shall be wood, or as shown regardless of post material used on remainder of the installation.
 All guardrail splices shall be lapped in the direction of Traffic. Where traffic is temporarily carried in the direction opposite of the final configuration, the rail splices shall be lapped in the direction of the permanent traffic.
 All work and materials required for installation of this terminal shall be paid under to the bid item "Guardrail End Terminal (SRT)".
 All steel parts shall be galvanized after fabrication.
 Standard splices, standard hardware connections (bolts, nuts, & washers) are used except where noted. See RD611 for additional details.
 The cable anchor assembly must be taut. Restrain the cable with vise grip pliers at the end being tightened to avoid twisting the cable. Make sure the nuts are tight and the cable is taut.



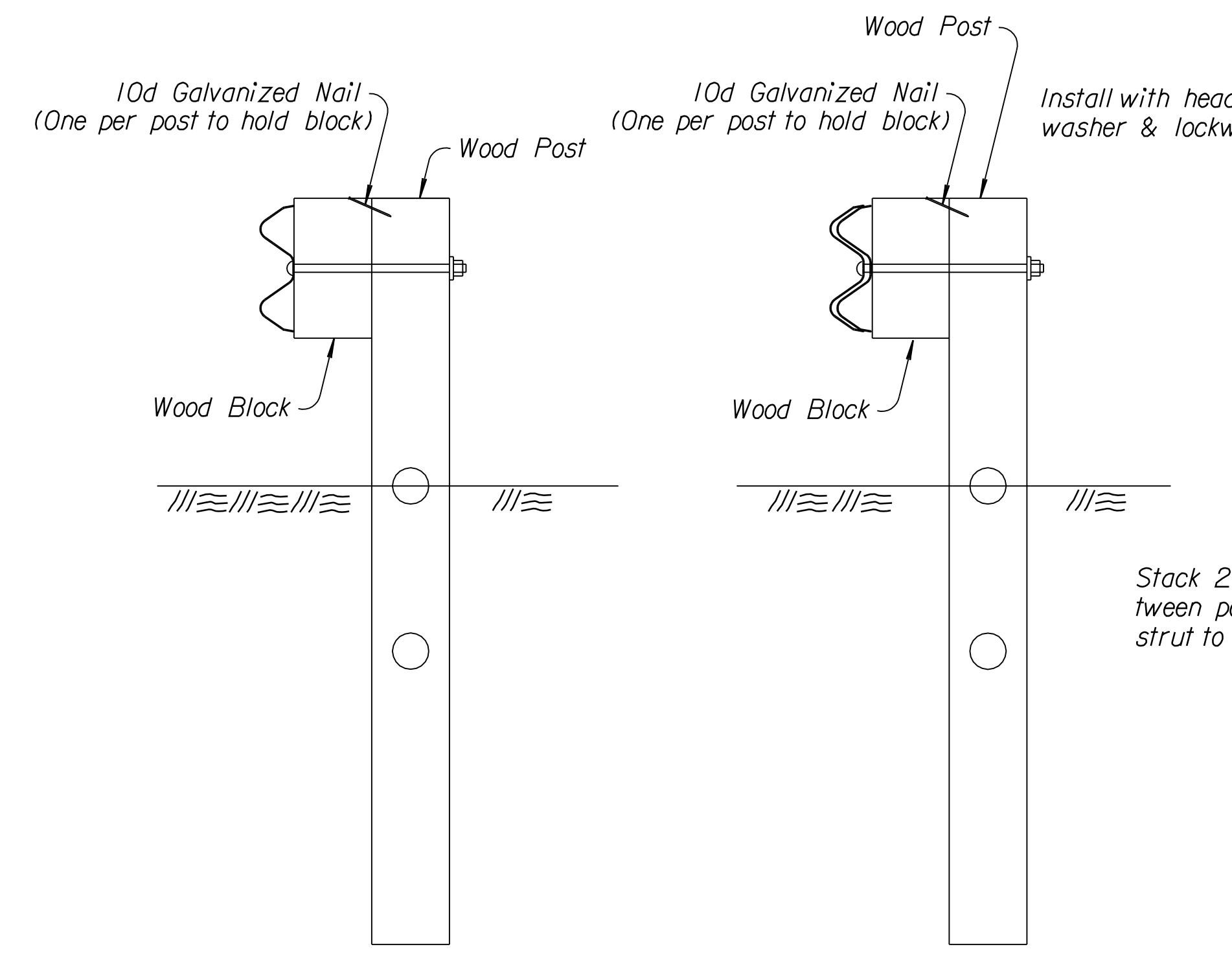
ELEVATION



CABLE ANCHOR BRACKET

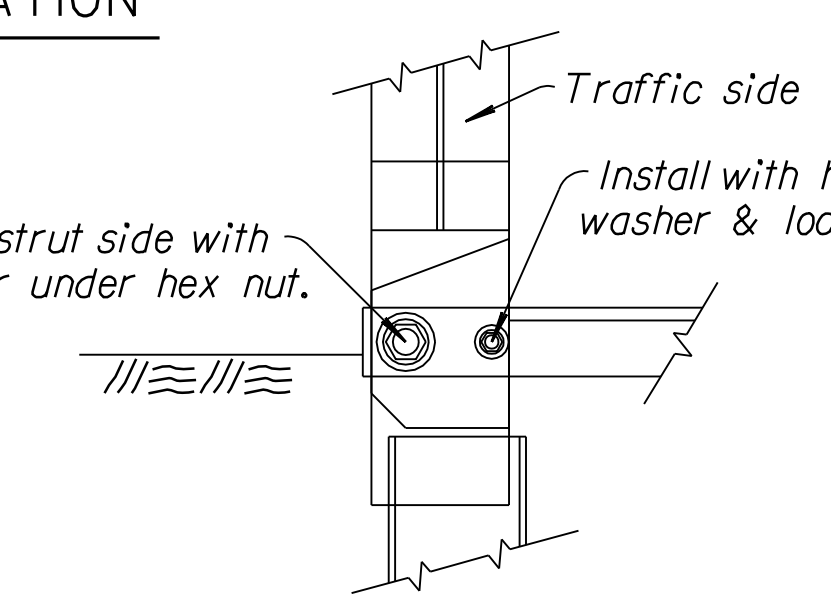


DETAIL "G" (Post #1)

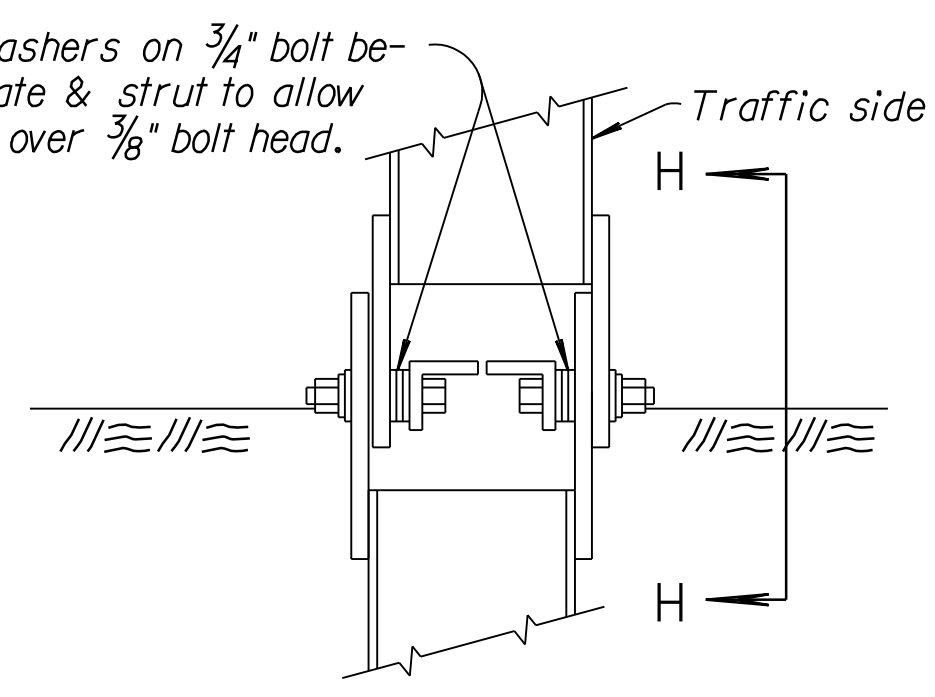


DETAIL OF CRT POSTS (Post #4 & 6)

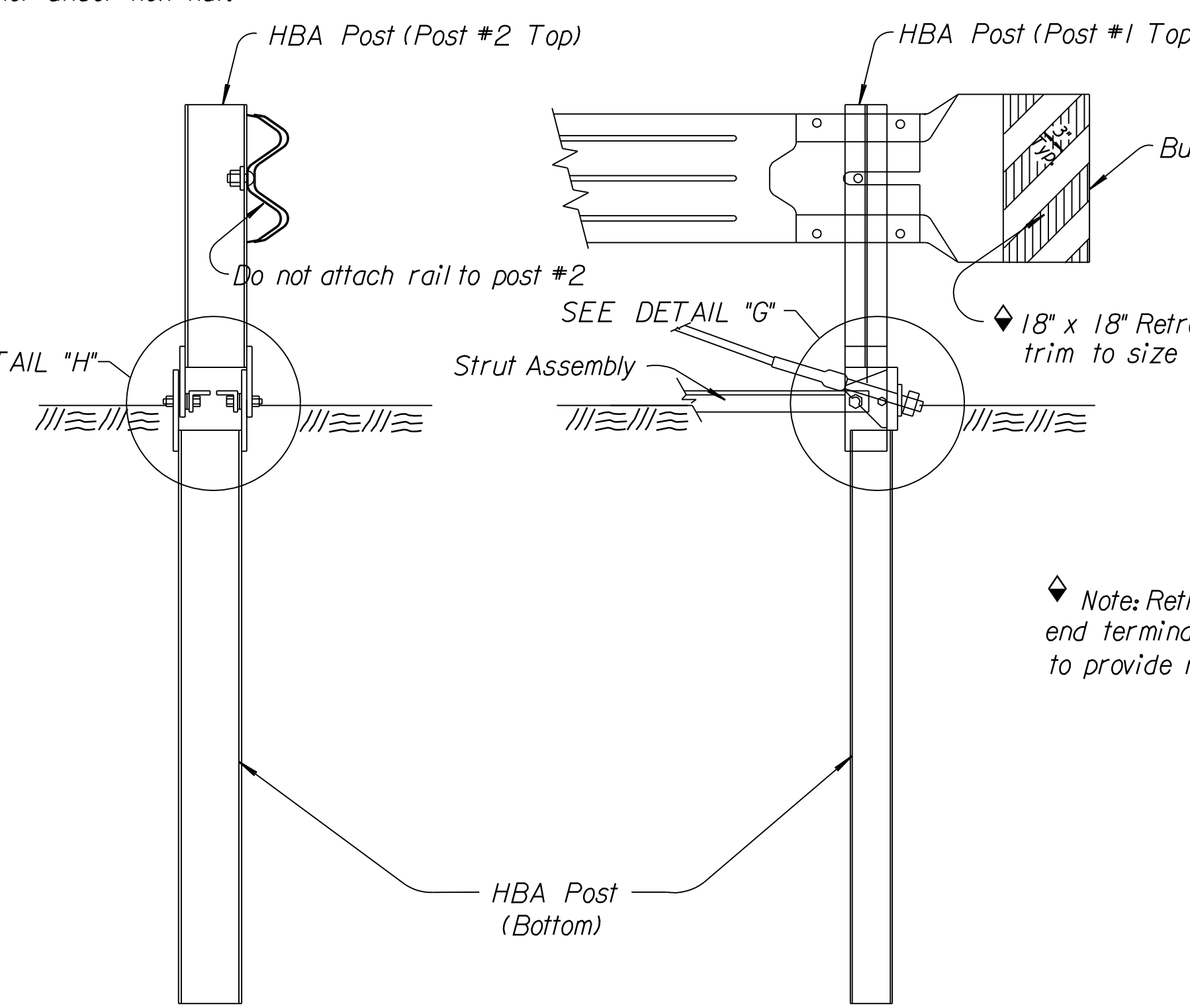
DETAIL OF CRT POSTS (Post #3,5 & 7)



VIEW H-H (Post #2)

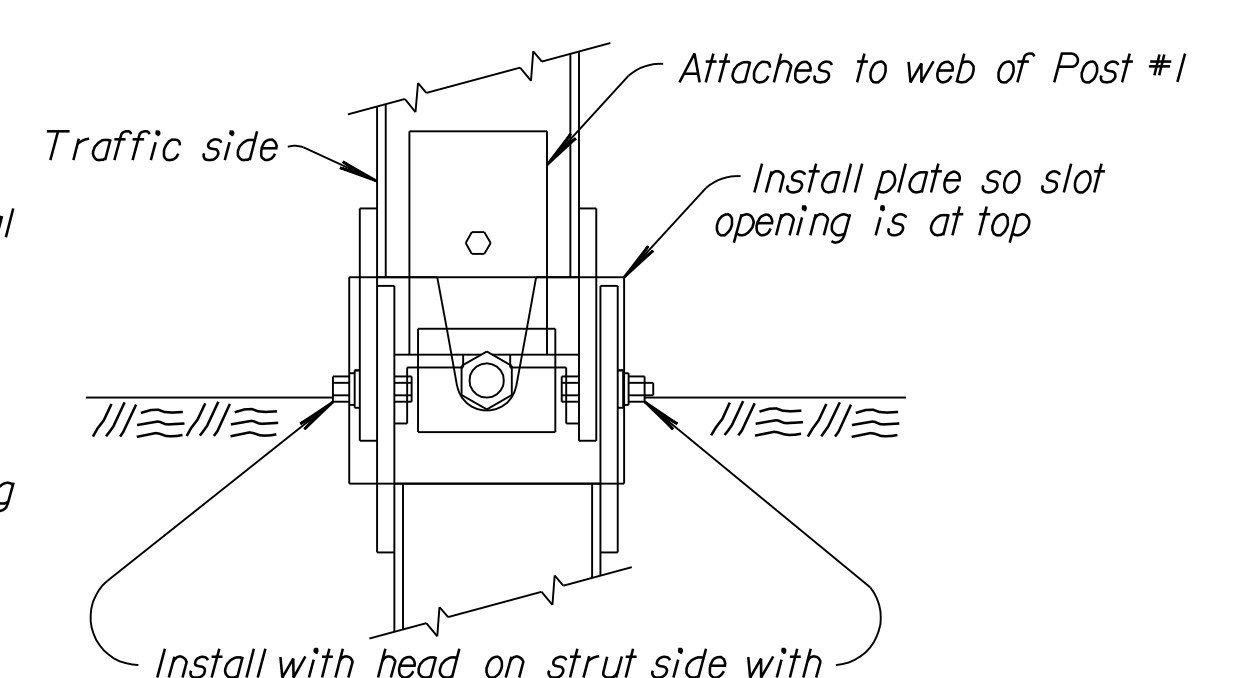


DETAIL "H" (Post #2)



DETAIL OF POST #2

ENLARGED VIEW @ POST #1



VIEW G-G (Post #1)

Note: Retroreflective sheeting shall be applied to the buffer end terminal after installation. The sheeting shall be located to provide maximum visibility to approach traffic.

3				
2				
1				
NO.	DATE	REVISIONS	BY	APP'D

KANSAS DEPARTMENT OF TRANSPORTATION			
GUARDRAIL END TERMINAL (SRT) (FLARED)			
RD621A			
DESIGNED	11-02-04	APP'D.	James O. Brewer
DESIGN CK.	DETAIL CK.	QUANTITIES	TRACED Bowser
		QUAN. CK.	TRACE CK. King

Drawn By: Plotted: 11/24/2009
 File: K:\3575\ACADD\SHEETS\STANDARDS\KDOT\STD\RD621A.dgn