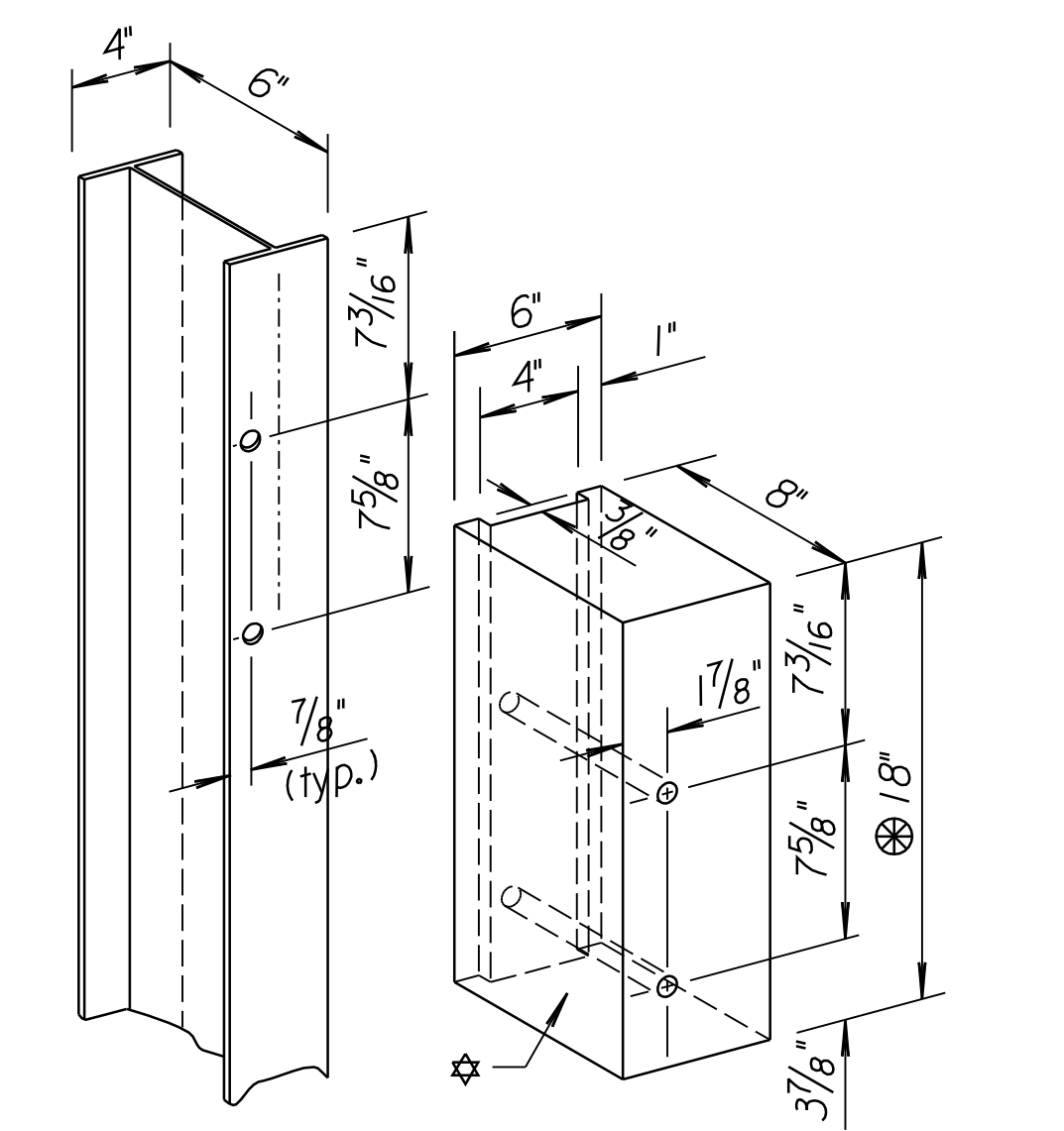
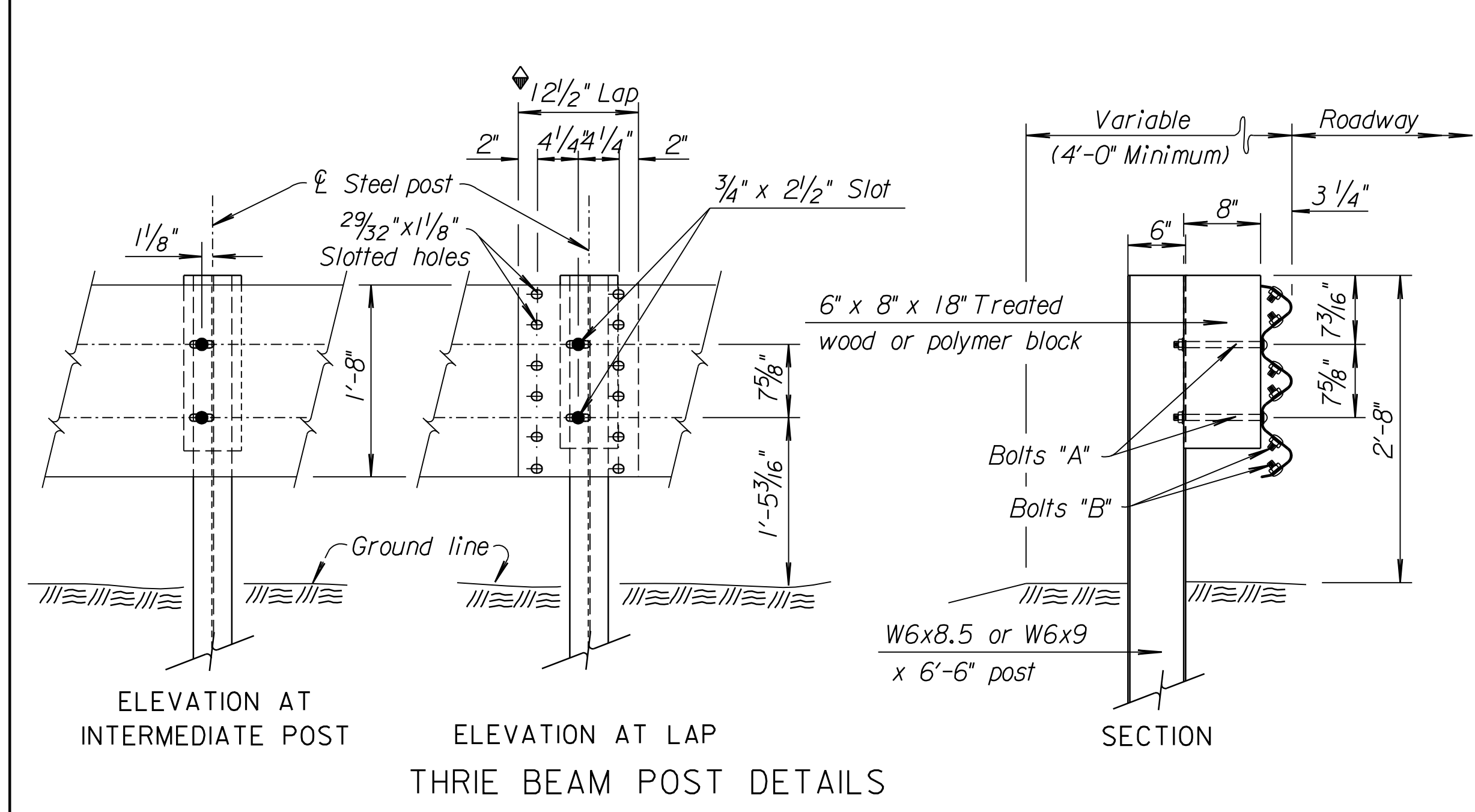
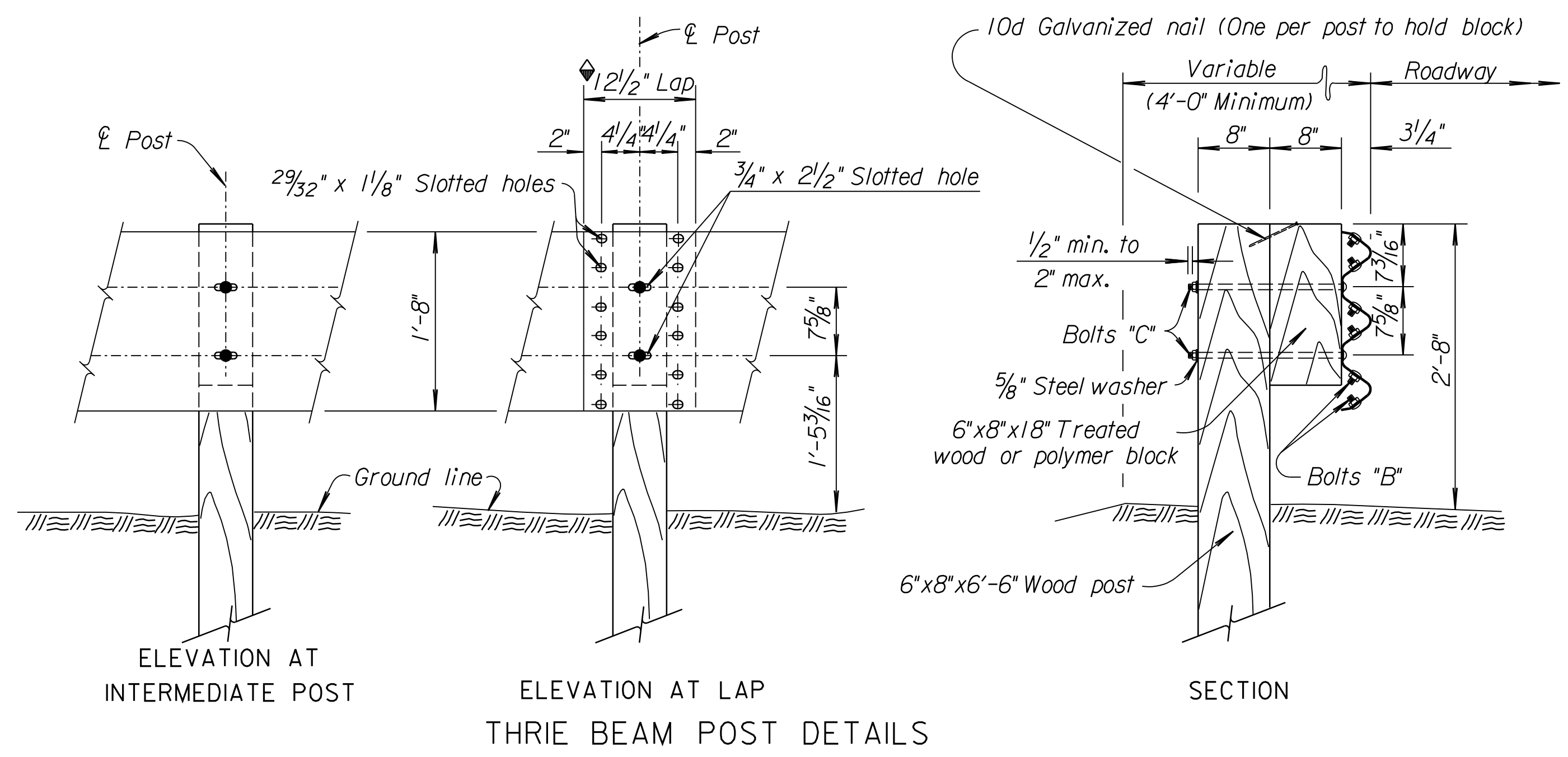
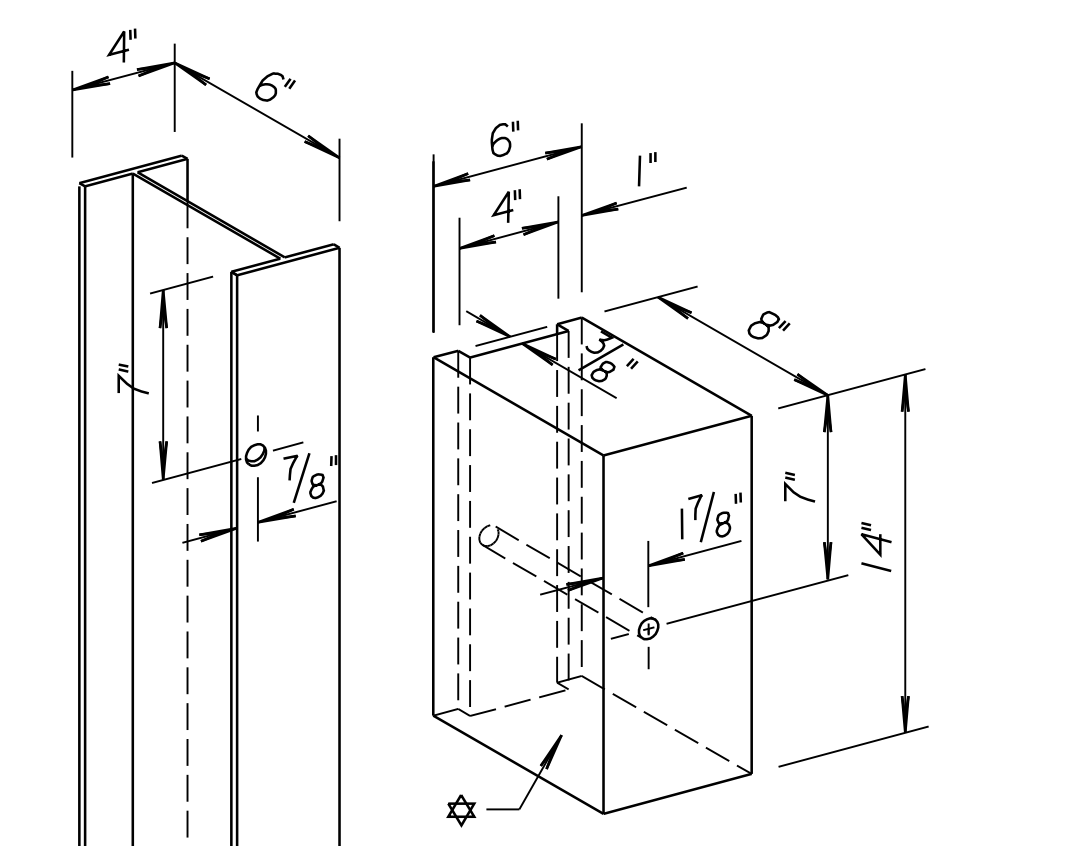
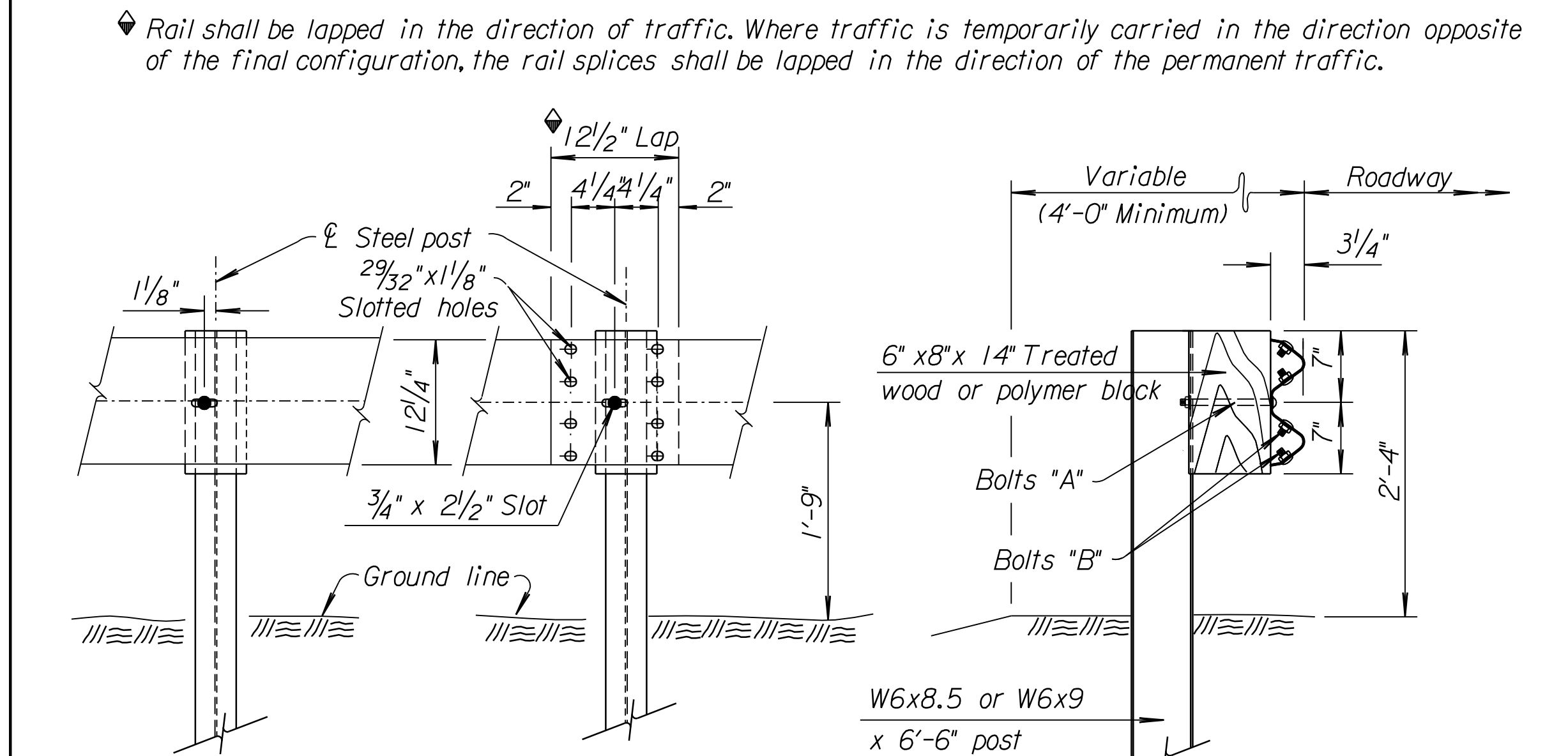
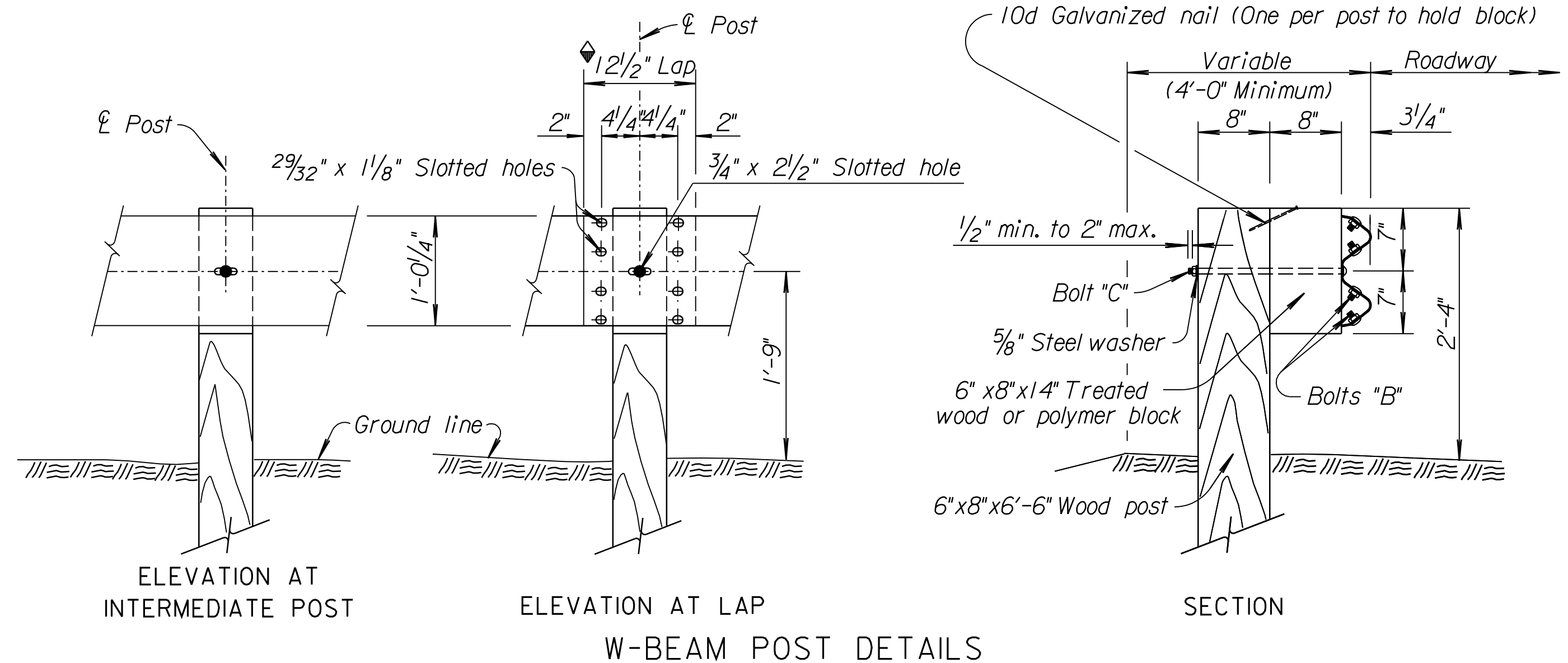


STATE	PROJECT NO.	YEAR	SHEET NO.	TOTAL SHEETS
KANSAS	87 N-0386-01	2009	211	255

⊗ The Thrie Beam Transition blockout shall be 6"x8"x18" with a hole pattern as shown on Standard Drawing RD613.



Note: All holes 1 3/16" dia.
THRIE BEAM HOLE PUNCHING DETAILS



Note: All holes 1 3/16" dia.
'W' BEAM HOLE PUNCHING DETAILS

◆ Rail shall be lapped in the direction of traffic. Where traffic is temporarily carried in the direction opposite of the final configuration, the rail splices shall be lapped in the direction of the permanent traffic.

WOOD POSTS

General Notes for Wood Posts

All wood posts and wood blocks shall be given a preservative treatment as provided for in the K.D.O.T. Standard Specifications. All cuts, injuries, and bolt holes in treated wood posts and blocks shall be thoroughly saturated with preservative.

Only one type of preservative treatment may be used on a project. Rectangular posts and wood blocks shall be S4S and shall meet the requirements of the KDOT Standard Specifications.

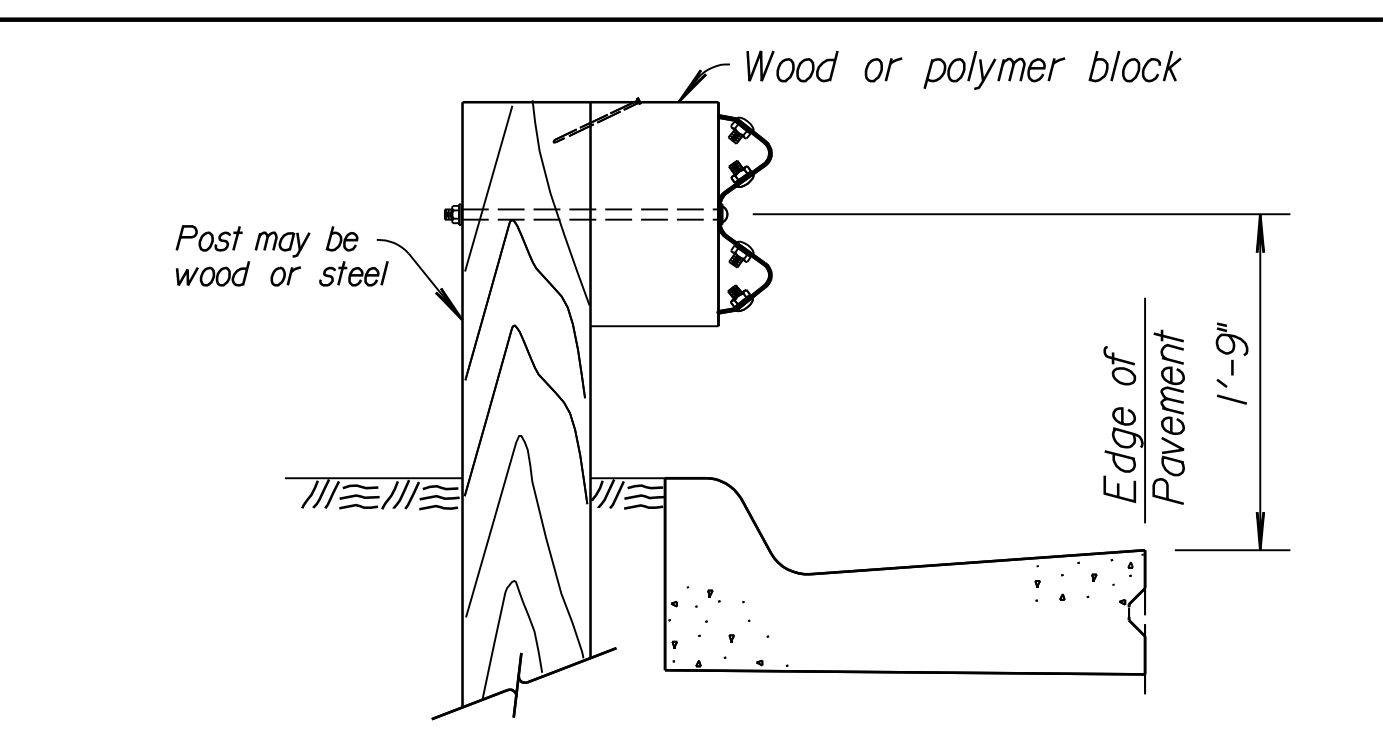
Excavation of all classes, including rock, shale, and other materials, regardless of the elevations encountered, required for the erection of Guardrail shall be considered subsidiary to the various bid items for which payment is made.

Guardrail posts may be set by digging or by driving. Post caps which are designed to protect the post from crushing shall be used during driving operations.

Guardrail posts may be wood or steel as shown on this sheet, with no change in type of post permitted within a single project except as noted on end section layout detail sheet.

Approved polymer block-outs may be substituted for wood blockouts. Only one type of block-out shall be permitted at each guardrail installation. This excludes the guardrail end terminals unless certified by the manufacturer.

The Contractor shall notify the Engineer at the earliest practical time if a non-removable man-made object (footing, pipe, etc.) is encountered which prevents installation of a full length post. Approval of the Engineer shall be obtained before cutting posts shorter than 6'-6" except as allowed on Standard Drawing RD617. All dimensions are nominal and are subject to manufacturing tolerances.

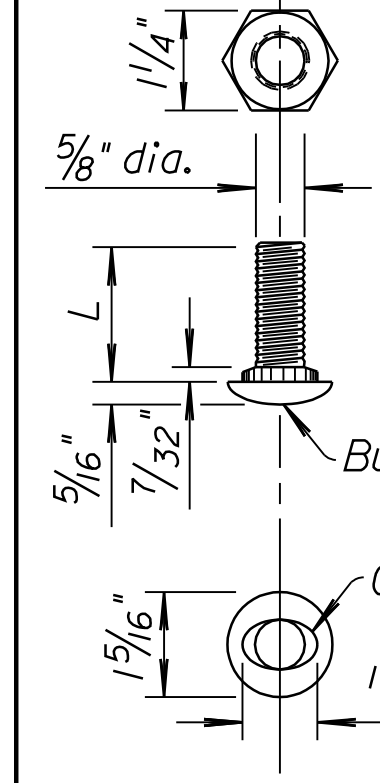


Note: When face of guardrail is aligned with the face of a curb, the height of rail shall be measured from the pavement surface at the curb/pavement joint as shown. A laydown type curb shall be used where the face of the guardrail is not located at the face of the curb.

DETAIL OF PLACEMENT AT CURB

All bolts, nuts, and washers shall be galvanized in accordance with the Standard Specifications.

BOLT SIZE SCHEDULE	
Bolt	L
A	8 1/2"
B	1 1/4"
C	18"



BOLT & NUT DETAILS

STEEL POSTS

General Notes for Steel Posts

The grade of steel for steel posts shall meet the requirements of the Standard Specifications.

Steel posts shall be hot dipped galvanized in accordance with KDOT Standard Specifications. Galvanizing shall be done after the posts and blocks are fabricated.

Wood blocks shall meet the requirements in the general notes for wood posts on this sheet.

Approved polymer block-outs may be substituted for wood blockouts. Only one type of block-out shall be permitted at each guardrail installation. This excludes the guardrail end terminals unless certified by the manufacturer.

Excavation of all classes, including rock, shale, and other materials regardless of the elevations encountered, required for the erection of Guardrail shall be considered as subsidiary to the various bid items for which payment is made.

Guardrail Posts may be set by digging or by driving. Post caps which are designed to protect the post from crushing shall be used during driving operations.

Guardrail posts may be wood or steel as shown on this sheet with no change in type of post permitted within a single project except as noted on end section layout detail sheet.

The Contractor shall notify the Engineer at the earliest practical time if a non-removable man-made object (footing, pipe, etc.) is encountered which prevents installation of a full length post. Approval of the Engineer shall be obtained before cutting posts shorter than 6'-6" except as allowed on Standard Drawing RD617. All dimensions are nominal and are subject to manufacturing tolerances.

⊗ NON-METALLIC (POLYMER) or TREATED WOOD BLOCK

NO.	DATE	REVISIONS	BY	APP'D
11	6-30-04	Removed steel blockout and notes.	S.W.K.	J.O.B.
10	7-15-02	Added polymer block-out alternate.	S.W.K.	J.O.B.
9	5-19-00	Add. alt. hole punch, det. & temp. traf.	R.J.S.	J.O.B.

KANSAS DEPARTMENT OF TRANSPORTATION			
GUARDRAIL POST DETAILS			
RD611			
FHWA APPROVAL	11-02-04	APP'D. James O. Brewer	
DESIGNED	DETAILED	QUANTITIES	TRACED
DESIGN CK.	DETAIL CK.	QUAN. CK.	TRACE CK. S.W.K.

Drawn By: Plotted: 11/24/2009 File: K:\3575\1A\CADD\SHEETS\STANDARDS\KDOT\STD611.dgn