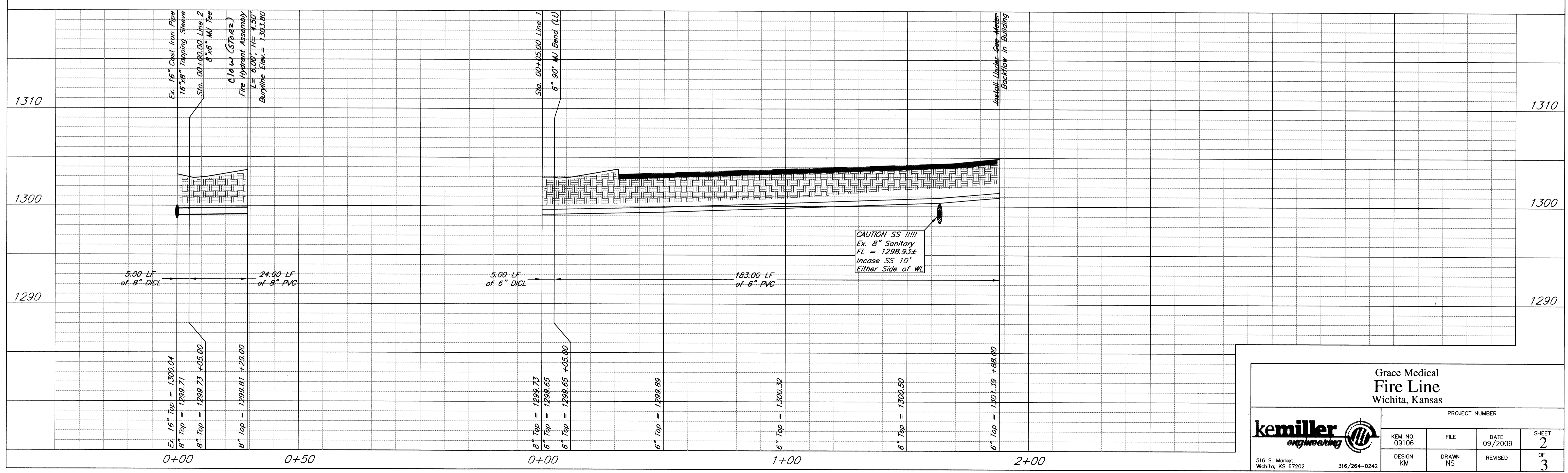
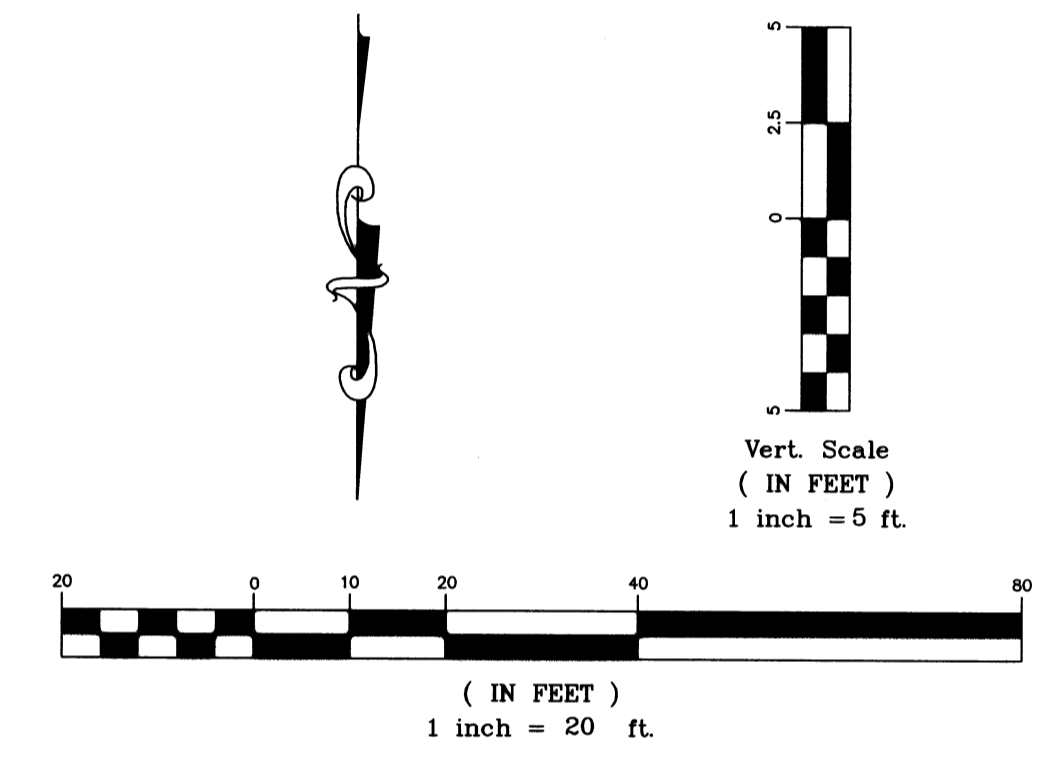


- Notes:**
1. Install sign on front of building stating fire department connection is in back of building.
 2. No obstruction, fencing, or planting around or near fire department connection.



**Grace Medical
Fire Line
Wichita, Kansas**

PROJECT NUMBER			
kemiller <i>engineering</i>	KEM NO. 09106	FILE	DATE 09/2009
	DESIGN KM	DRAWN NS	REVISED
SHEET 2		OF 3	

516 S. Market, Wichita, KS 67202 316/264-0242