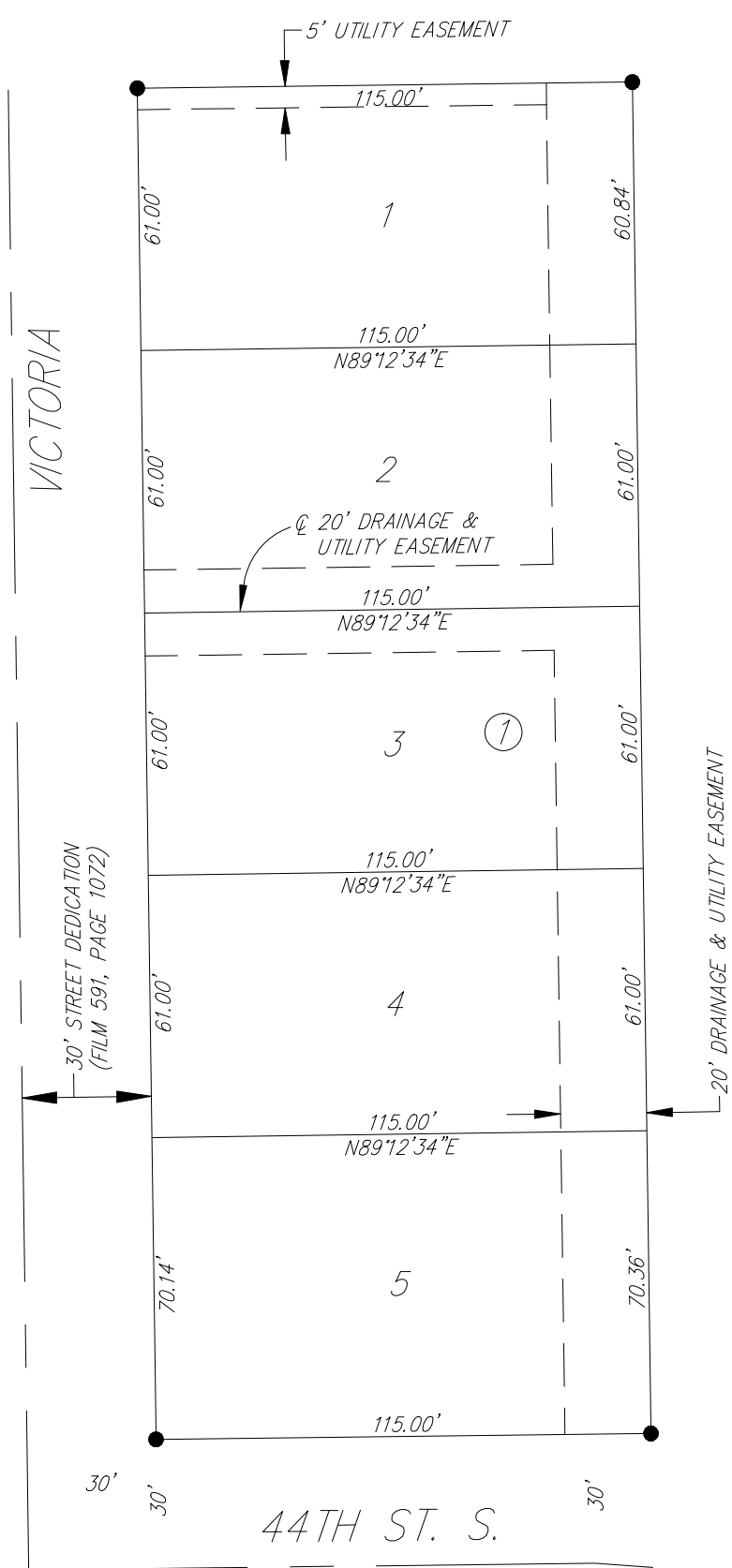


HOBBS VILLAGE

an Addition to Wichita, Sedgwick County, Kansas



1" = 40'

M = Measured
 D = Described
 C = Calculated
 P = Plotted (Carol Jean 2nd Addition)

SURVEY MARKER LEGEND

- 1/2" IRON PIPE (FOUND - ORIGIN UNKNOWN)
- ⊙ 1/2" IRON PIPE IN THIMBLE (FOUND - ORIGIN UNKNOWN)
- 5/8" REBAR W/RUGGLES & BOHM CAP (SET)

BENCH MARK: CHISELED SQUARE AT THE WEST CURB RETURN AT THE SOUTHWEST CORNER OF VICTORIA AND 44TH ST. S.
 ELEVATION = 1270.50 (NAVD88)

State of Kansas)
 Sedgwick County) SS

We, Ruggles & Bohm, P.A., Land Surveyors in aforesaid county and state, do hereby certify that, under the supervision of the undersigned, we have surveyed and platted "HOBBS VILLAGE", an Addition to Wichita, Sedgwick County, Kansas, and that the accompanying plat is a true and correct exhibit of the property surveyed, described as follows:

The East 115.00 feet of the West 145.00 feet of a tract beginning 330.00 feet south of the Northeast corner of the SE1/4 of Sec. 16, T28S, R1E of the 6th P.M., Sedgwick County, Kansas; thence South 330.00 feet; thence West 660.00 feet; thence North 330.00 feet; thence East 660.00 feet to the point of beginning, EXCEPT the north 17.50 feet thereof.

All public easements and dedications are hereby vacated by virtue of K.S.A. 12-512(b).

Ruggles & Bohm, P.A.

 Thomas C. Ruggles Land Surveyor

Know all men by these presents that we, the undersigned, have caused the land described in the surveyor's certificate to be platted into Lots, a Block and a Street, to be known as "HOBBS VILLAGE", an Addition to Wichita, Sedgwick County, Kansas. The street is hereby dedicated to and for the use of the public. A drainage plan has been developed for this plat; the property shall remain at established grades, or as modified with the approval of the City Engineer, and unobstructed to allow for the conveyance of storm water.

Habitat for humanity, Inc.

 Linda Stewart Executive Director

State of Kansas)
 Sedgwick County) SS

The foregoing instrument acknowledged before me, this _____ day of _____, 2009, by Linda Stewart, Executive Director, on behalf of Habitat for humanity, Inc.

 Notary Public

My appointment expires _____

This plat of "HOBBS VILLAGE", an Addition to Wichita, Sedgwick County, Kansas, has been submitted to and approved by the Wichita-Sedgwick County Metropolitan Area Planning Commission, Wichita, Kansas.

Dated this _____ day of _____, 2009.

Wichita-Sedgwick County Metropolitan Area Planning Commission

 Darrell Downing Chair

 John L. Schlegel Secretary

This plat approved and all dedications shown hereon accepted by the City Council of the City of Wichita, Kansas, this _____ day of _____, 2009.

At the Direction of the City Council

 Carl Brewer Mayor

 Karen Sublett City Clerk

Reviewed in accordance with K.S.A. 58-2005 on this _____ day of _____, 2009.

 Tricia L. Robello, LS #1246 Deputy County Surveyor
 Sedgwick County Kansas

Entered on transfer record this _____ day of _____, 2009.

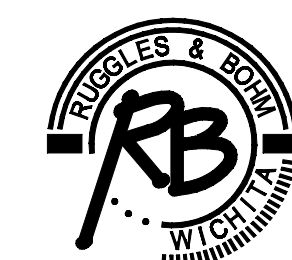
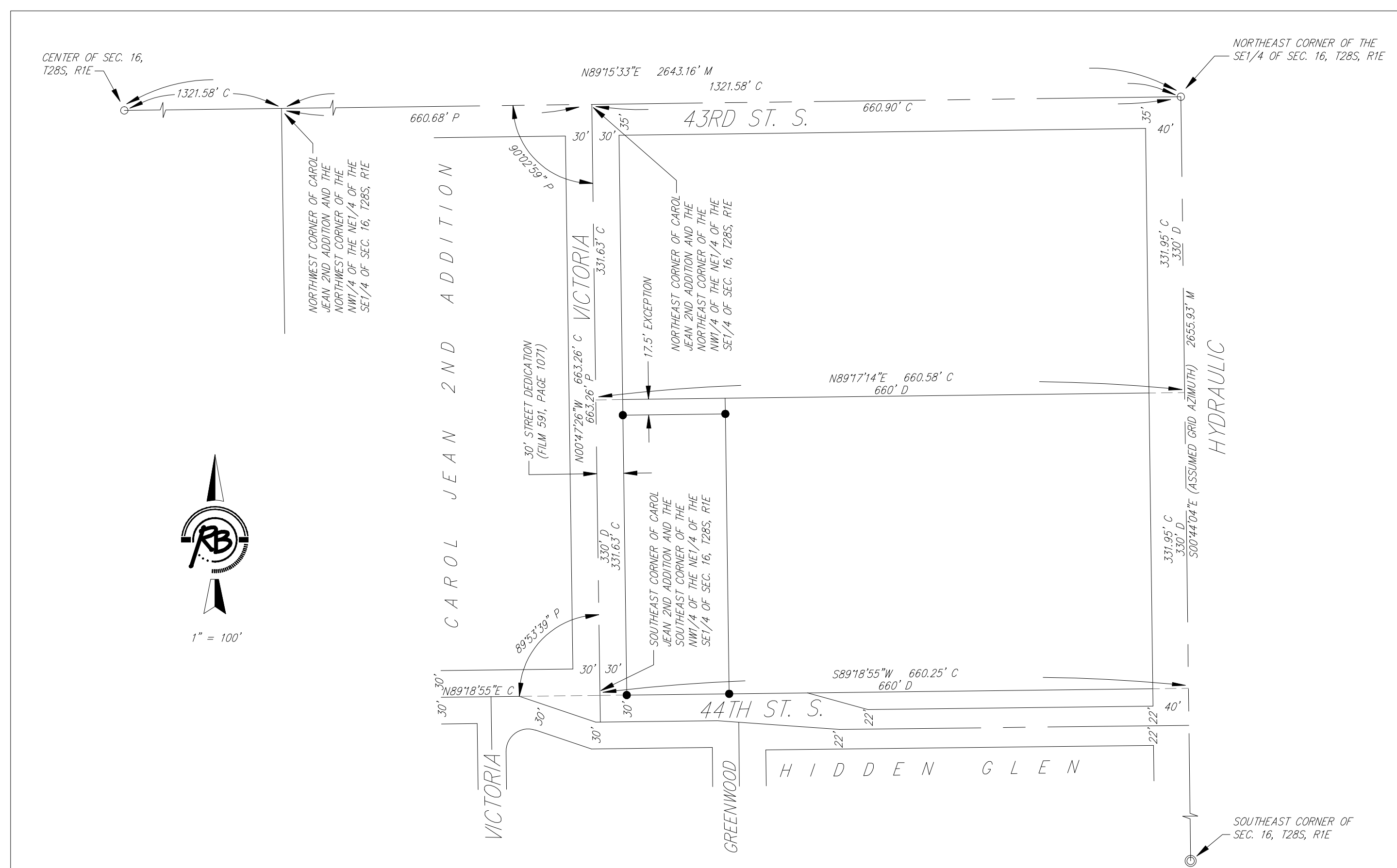
 Kelly B. Arnold County Clerk

State of Kansas)
 Sedgwick County) SS

This is to certify that this plat has been filed for record in the office of the Register of Deeds, this _____ day of _____, 2009, at _____ o'clock _____ M, and is duly recorded.

 Bill Meek Register of Deeds

 Tonya Buckingham Deputy



Ruggles & Bohm, P.A.
 Engineering, Surveying, Land Planning
 924 North Main
 Wichita, Kansas 67203
 www.rbkansas.com
 (316) 264-8008
 (316) 264-4621 fax
 E-mail: info@rbkansas.com

DWG FILE: SURVEY BASE
 PROJECT NO. 3457P
 AUGUST 26, 2009