

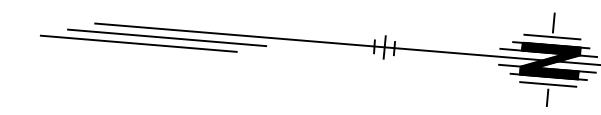
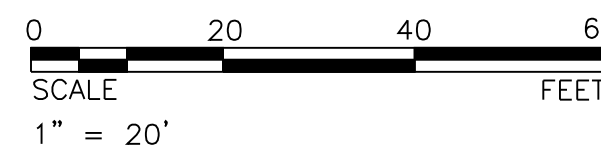
STATE	PROJECT NO.	YEAR	SHEET NO.	TOTAL SHEETS
KANSAS	472-84295	2010	14	194

LEGEND

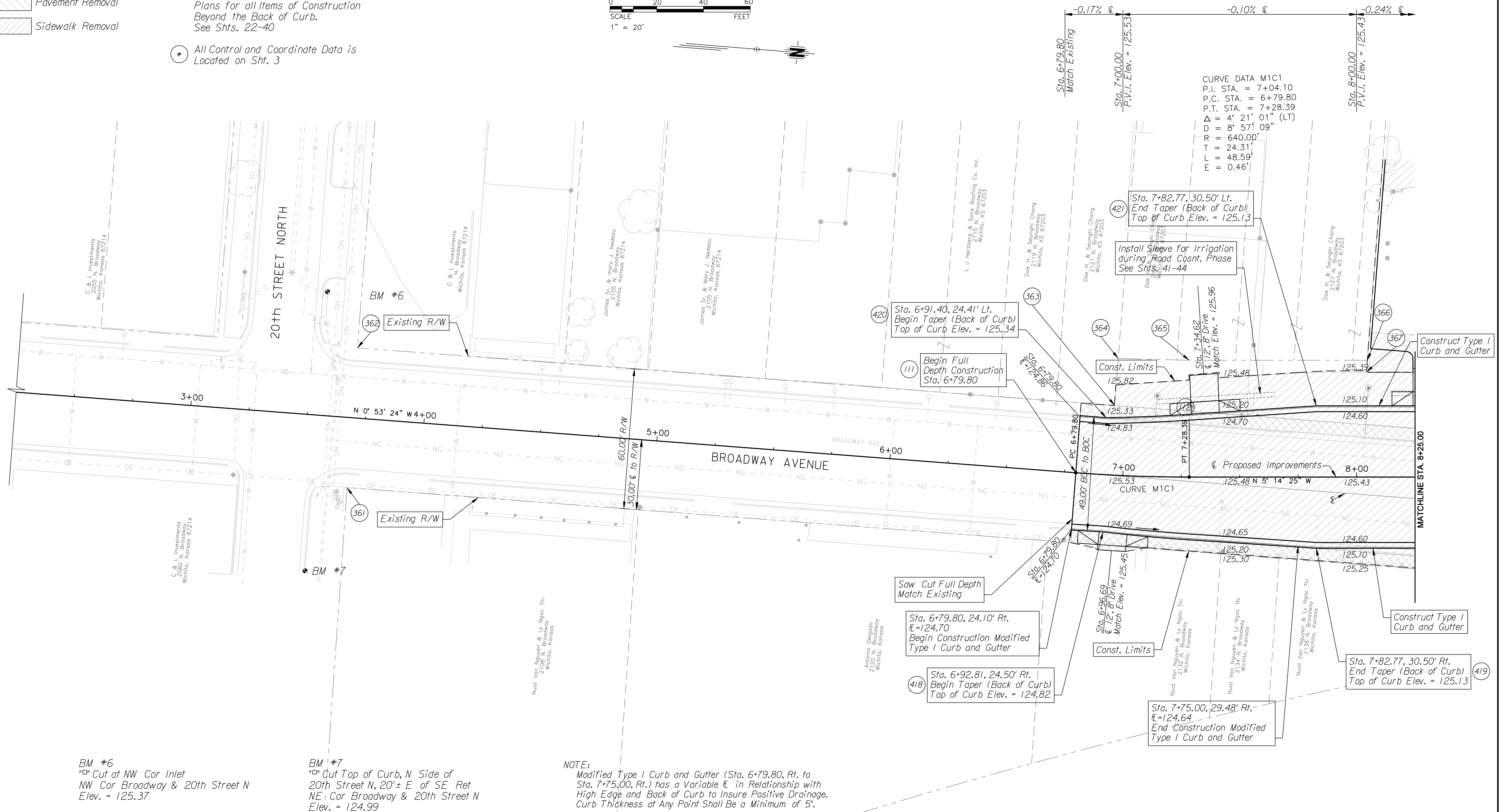
- Pavement Removal
- Sidewalk Removal

NOTE:
Contractor Shall See Streetscape Plans for all Items of Construction Beyond the Back of Curb. See Shts. 22-40

All Control and Coordinate Data is Located on Sht. 3



DATE	BY
REFERENCES NOTED	REFERENCES CHECKED



BM #6
"□" Cut at NW Cor Inlet
NW Cor Broadway & 20th Street N
Elev. = 125.37

BM #7
"□" Cut Top of Curb, N Side of
20th Street N, 20'± E of SE Ret
NE Cor Broadway & 20th Street N
Elev. = 124.99

NOTE:
Modified Type I Curb and Gutter (Sta. 6+79.80, Rt. to Sta. 7+75.00, Rt.) has a Variable ϵ in Relationship with High Edge and Back of Curb to Insure Positive Drainage. Curb Thickness at Any Point Shall Be a Minimum of 5\".

\$getenv, "dwgprefix"\$(getenv, "dwgname"), Plotarea\$(etime, 0, MON DD" " YYYY - HHMM) - HMMam/pm
 Plotted By: danavarro
 File: g:\W05\0001\ROAD\001\p04.sht

CITY OF WICHITA	
21ST STREET NORTH & BROADWAY AVENUE INTERSECTION	
PROPOSED PLAN & PROFILE BROADWAY AVENUE STA. 6+79.80 TO STA. 8+25.00 WICHITA, KANSAS	
DESIGNED	DRAWN
M.D.B.	D.A.N.
CHECKED	DATE
B.A.L.	1/8/2010

