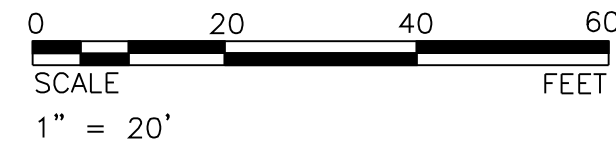


LEGEND

- Pavement Removal
- Sidewalk Removal
- Pavement Milling
- Tree Removal

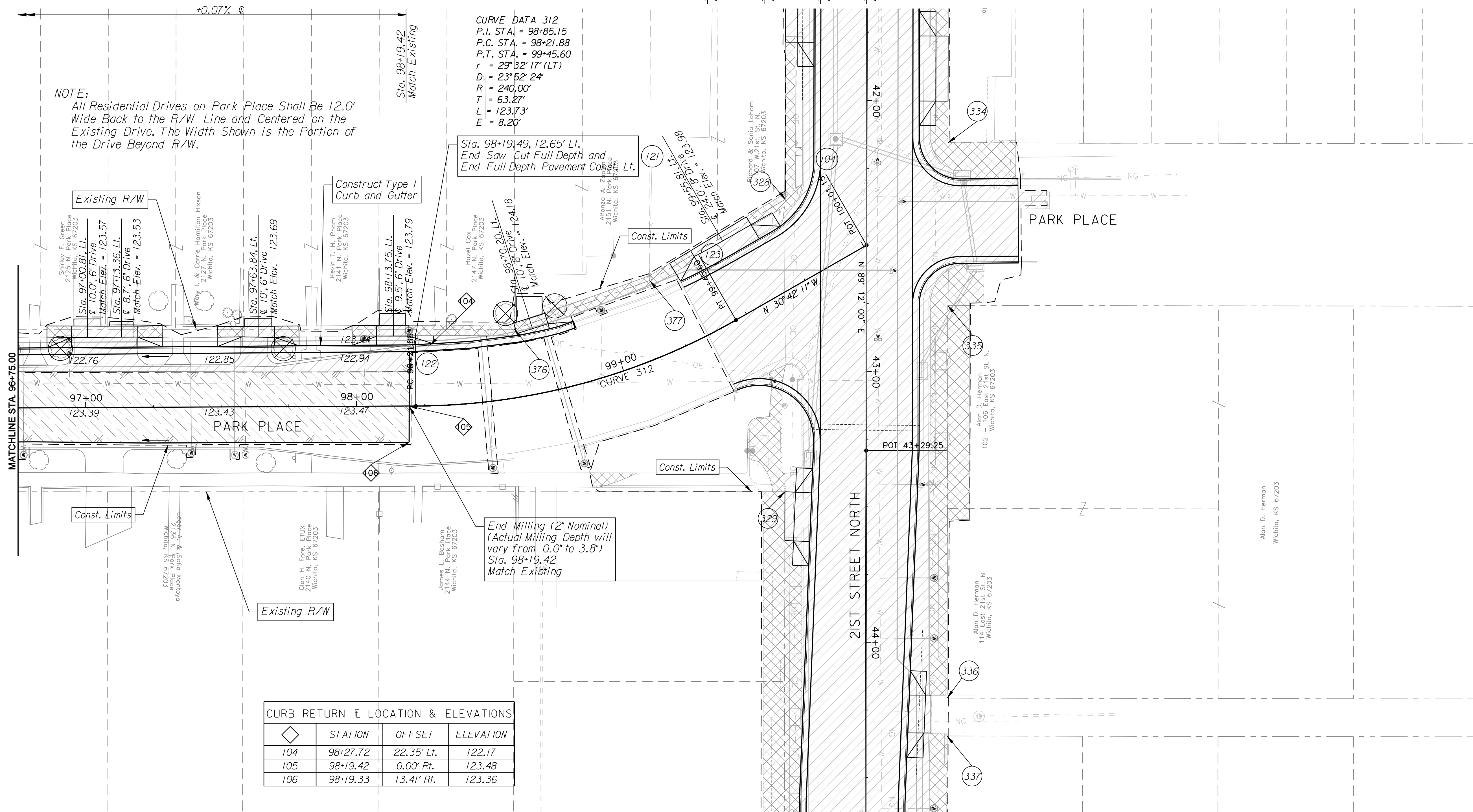
NOTE:
 Contractor Shall See Streetscape Plans for all Items of Construction Beyond the Back of Curb. See Shts. 22-40

All Control and Coordinate Data is Located on Sht. 3



NOTE:
 All Residential Drives on Park Place Shall Be 12.0' Wide Back to the R/W Line and Centered on the Existing Drive. The Width Shown is the Portion of the Drive Beyond R/W.

CURVE DATA 312
 P.I. STA. = 98+85.15
 P.C. STA. = 98+21.88
 P.T. STA. = 99+45.60
 r = 29° 32' 17" (LT)
 D = 23° 52' 24"
 R = 240.00'
 T = 63.27'
 L = 123.73'
 E = 8.20'



◆	STATION	OFFSET	ELEVATION
104	98+27.72	22.35' Lt.	122.17
105	98+19.42	0.00' Rt.	123.48
106	98+19.33	13.41' Rt.	123.36

DATE	BY
REFERENCES NOTED	
REFERENCES CHECKED	

Plotted By: danavarro
 Plotted: 1/18/2010
 File: g:\W05\0001\ROAD\001\p08.sht

CITY OF WICHITA 21ST STREET NORTH & BROADWAY AVENUE INTERSECTION PROPOSED PLAN & PROFILE PARK PLACE STA. 96+75.00 TO STA. 100+01.15 WICHITA, KANSAS	
DESIGNED	DRAWN
M.D.B.	D.A.N.
CHECKED	DATE:
B.A.L.	1/8/2010