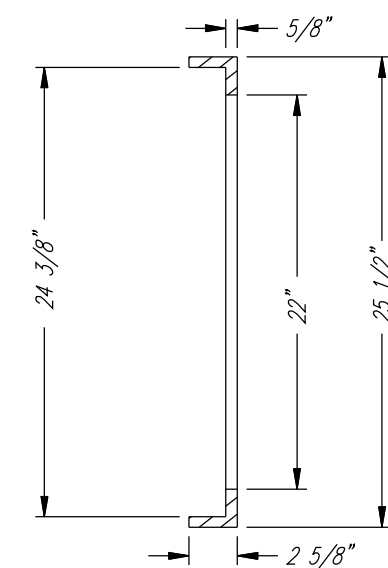
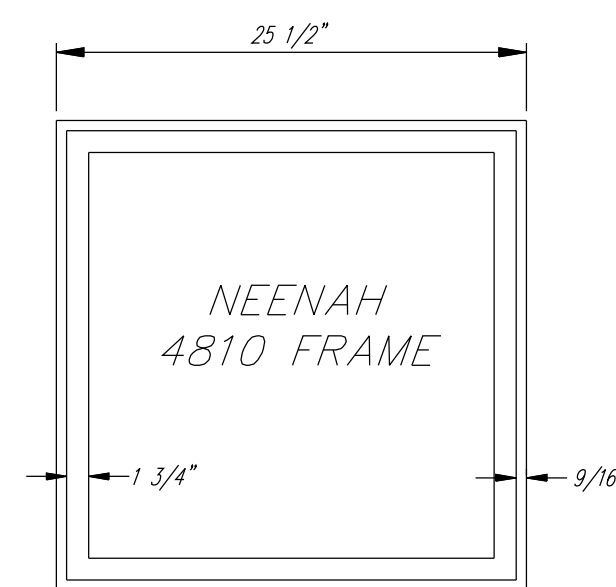


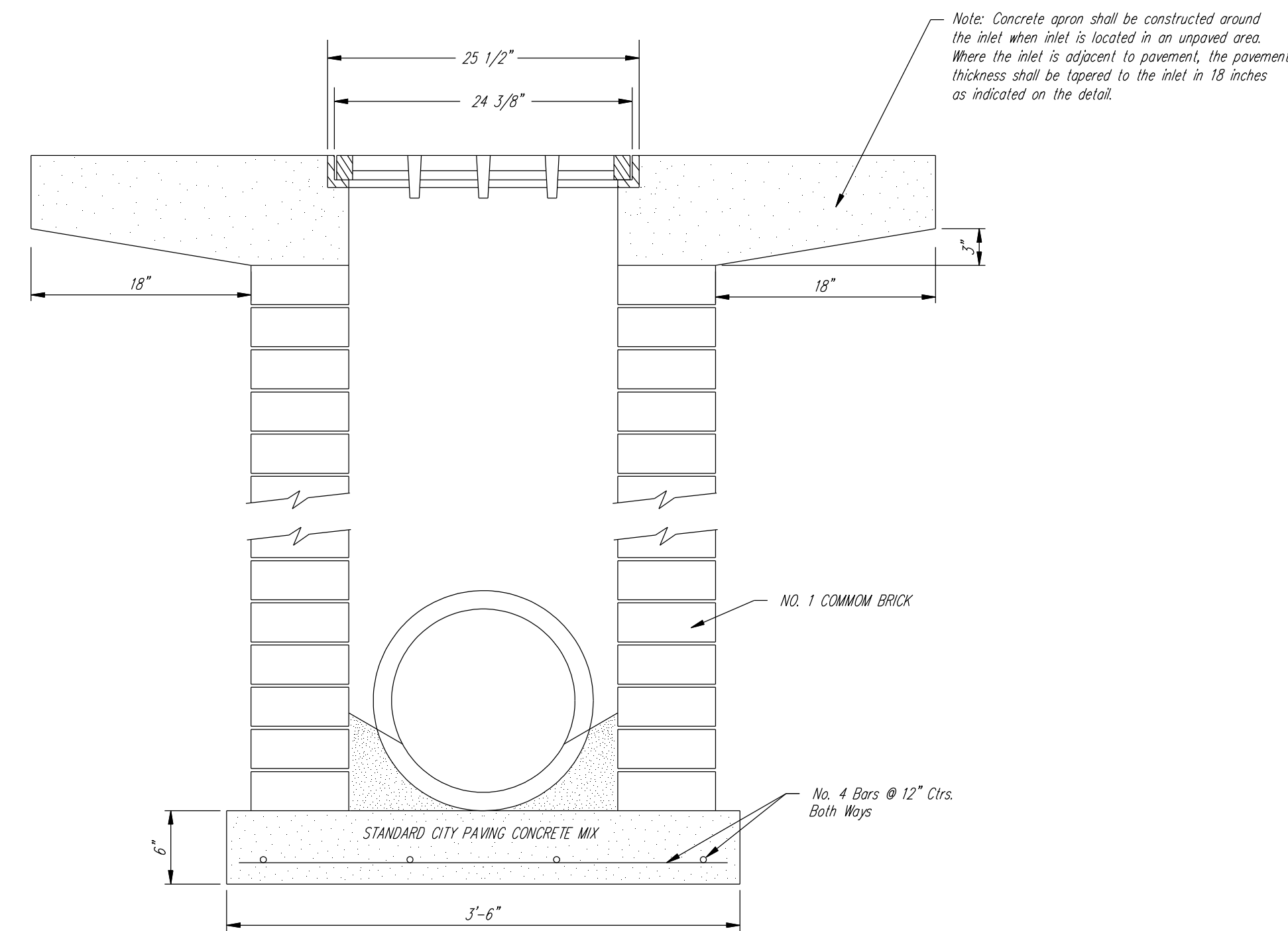
NOTE: Grates shall be imprinted on the top surface with "CITY OF WICHITA" using letters at least 1" in height. Other marking methods may be approved by the engineer.

Grate 4808A Detail



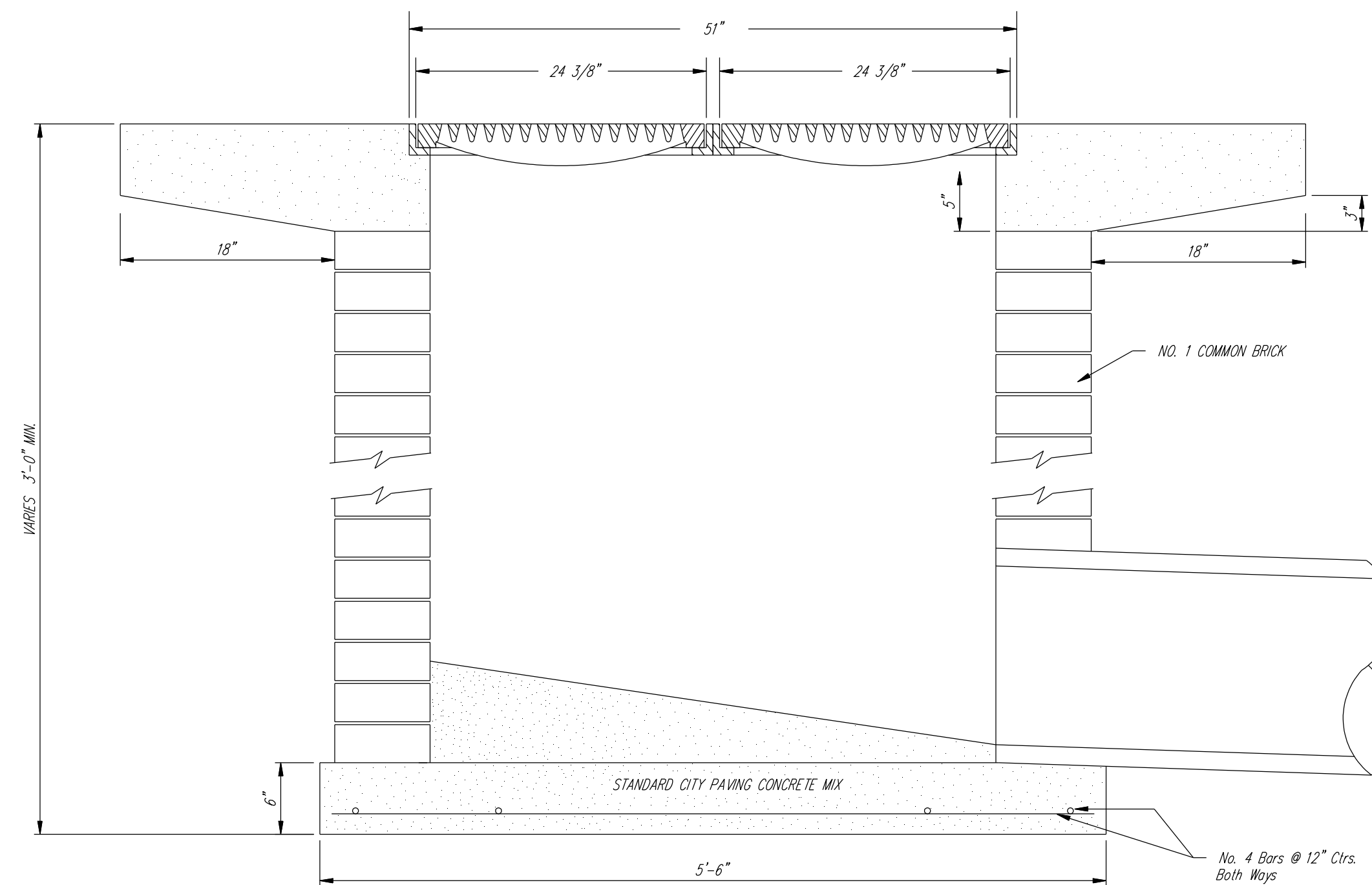
Frame 4810 Detail

Component No's.: Grate 4808-3011, Frame 4810-7001
 Material: Cast Gray Iron ASTM A-48, Class 35B
 Finish: Not Painted
 Weight: Grate 154#, Frame 47#



Note: Concrete apron shall be constructed around the inlet when inlet is located in an unpaved area. Where the inlet is adjacent to pavement, the pavement thickness shall be tapered to the inlet in 18 inches as indicated on the detail.

NOTE: Each Drop Inlet Requires Two Frames and Two Grates.



<p>THE CITY OF WICHITA</p> <p>CITY ENGINEER'S OFFICE CITY HALL - SEVENTH FLOOR 455 NORTH MAIN STREET WICHITA, KANSAS 67202 (316) 268-4501 (316) 268-4114 FAX</p>	DROP INLET 2' X 4' w/ Pedestrian Friendly Grate	
	JAMES L. ARMOUR, P.E. - CITY ENGINEER	
	PROJECT NUMBER 472-84295	INDEX CODE XXXXXX
	DATE MAR 96	54