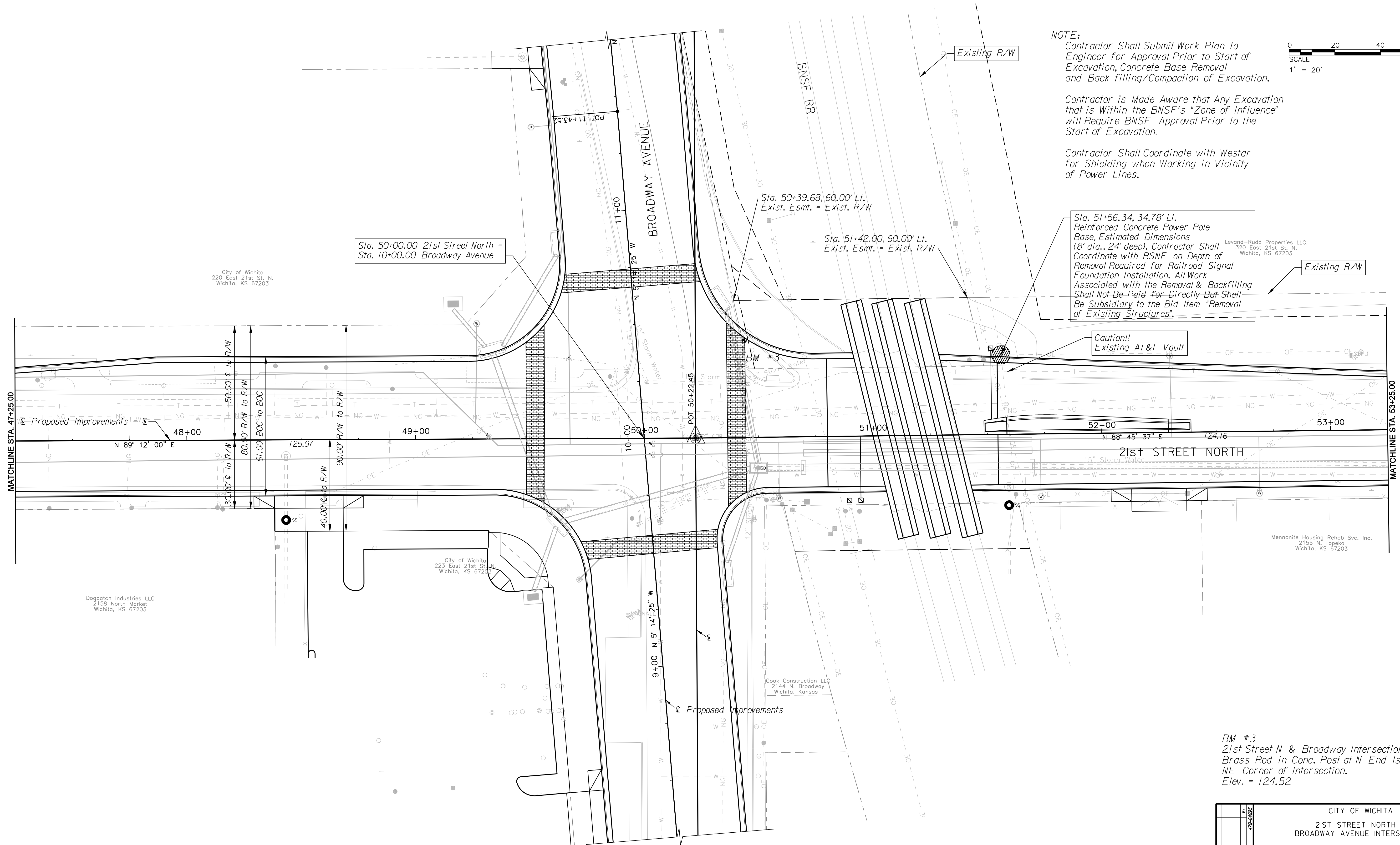


STATE	PROJECT NO.	YEAR	SHEET NO.	TOTAL SHEETS
KANSAS	472-84295	2010	61	194

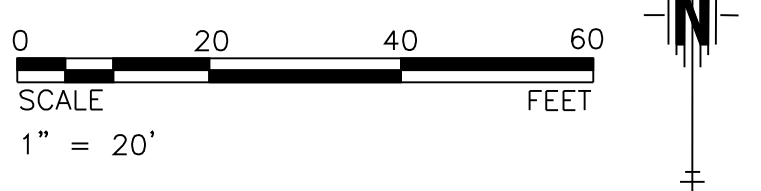
DATE	
BY	
REFERENCES NOTED	
REFERENCES CHECKED	



**NOTE:**  
 Contractor Shall Submit Work Plan to Engineer for Approval Prior to Start of Excavation, Concrete Base Removal and Back filling/Compaction of Excavation.

Contractor is Made Aware that Any Excavation that is Within the BNSF's "Zone of Influence" will Require BNSF Approval Prior to the Start of Excavation.

Contractor Shall Coordinate with Westar for Shielding when Working in Vicinity of Power Lines.



Sta. 50+00.00 21st Street North  
 Sta. 10+00.00 Broadway Avenue

Sta. 50+39.68, 60.00' Lt.  
 Exist. Esmt. = Exist. R/W

Sta. 51+42.00, 60.00' Lt.  
 Exist. Esmt. = Exist. R/W

Sta. 51+56.34, 34.78' Lt.  
 Reinforced Concrete Power Pole Base, Estimated Dimensions (8' dia., 24' deep). Contractor Shall Coordinate with BSNF on Depth of Removal Required for Railroad Signal Foundation Installation. All Work Associated with the Removal & Backfilling Shall Not Be Paid For Directly But Shall Be Subsidiary to the Bid Item "Removal of Existing Structures".

Caution!!  
 Existing AT&T Vault

Levand-Rudd Properties LLC.  
 320 East 21st St. N.  
 Wichita, KS 67203

Mennonite Housing Rehab Svc. Inc.  
 2155 N. Topeka  
 Wichita, KS 67203

Dogpatch Industries LLC  
 2158 North Market  
 Wichita, KS 67203

City of Wichita  
 223 East 21st St.  
 Wichita, KS 67203

Cook Construction LLC  
 2144 N. Broadway  
 Wichita, Kansas

BM #3  
 21st Street N & Broadway Intersection  
 Brass Rod in Conc. Post at N End Island  
 NE Corner of Intersection.  
 Elev. = 124.52

\$[getvar, "dwgprefix"]\$(getvar, "dwgname"). PlotTime\$(etime, 0, MON DD", "YYYY - HHMMam/pm)  
 Plotted By: danavarro  
 File: g:\W050001\ROAD\001\westar.sht

CITY OF WICHITA	
21ST STREET NORTH & BROADWAY AVENUE INTERSECTION	
UTILITY POLE FOUNDATION REMOVAL DETAIL	
WICHITA, KANSAS	
DESIGNED	DRAWN
M.D.B.	D.A.N.
CHECKED	DATE:
B.A.L.	1/8/2010

**TranSystems**