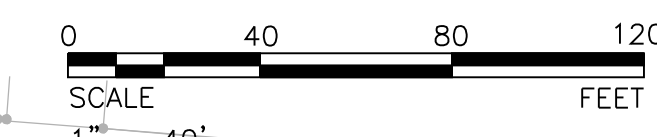
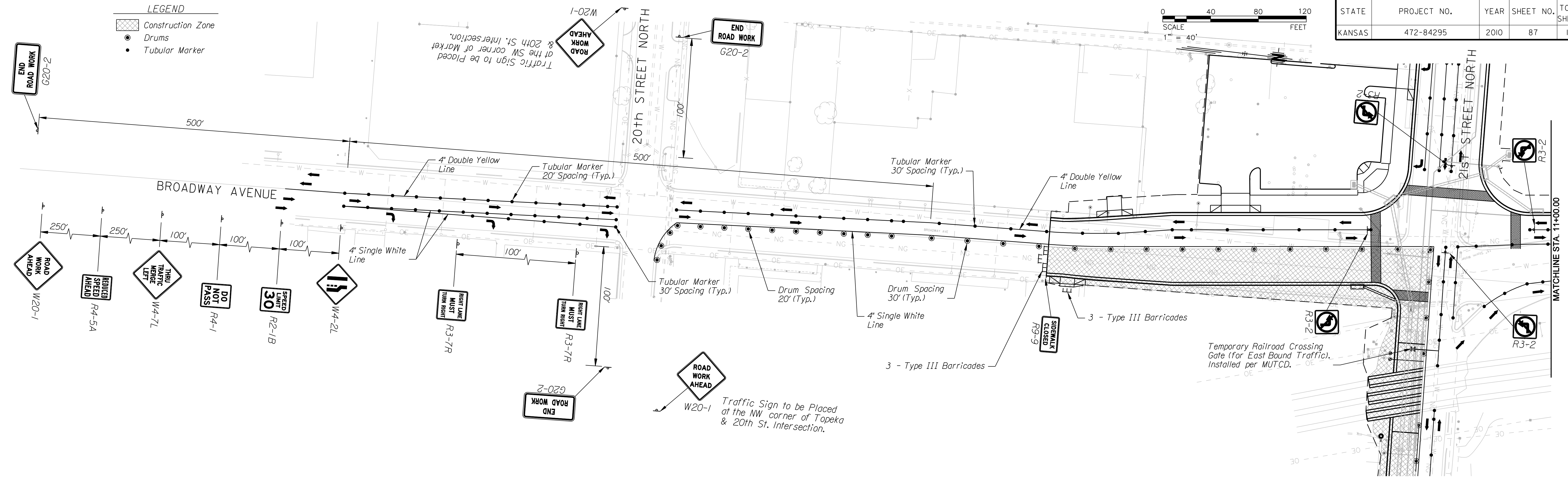


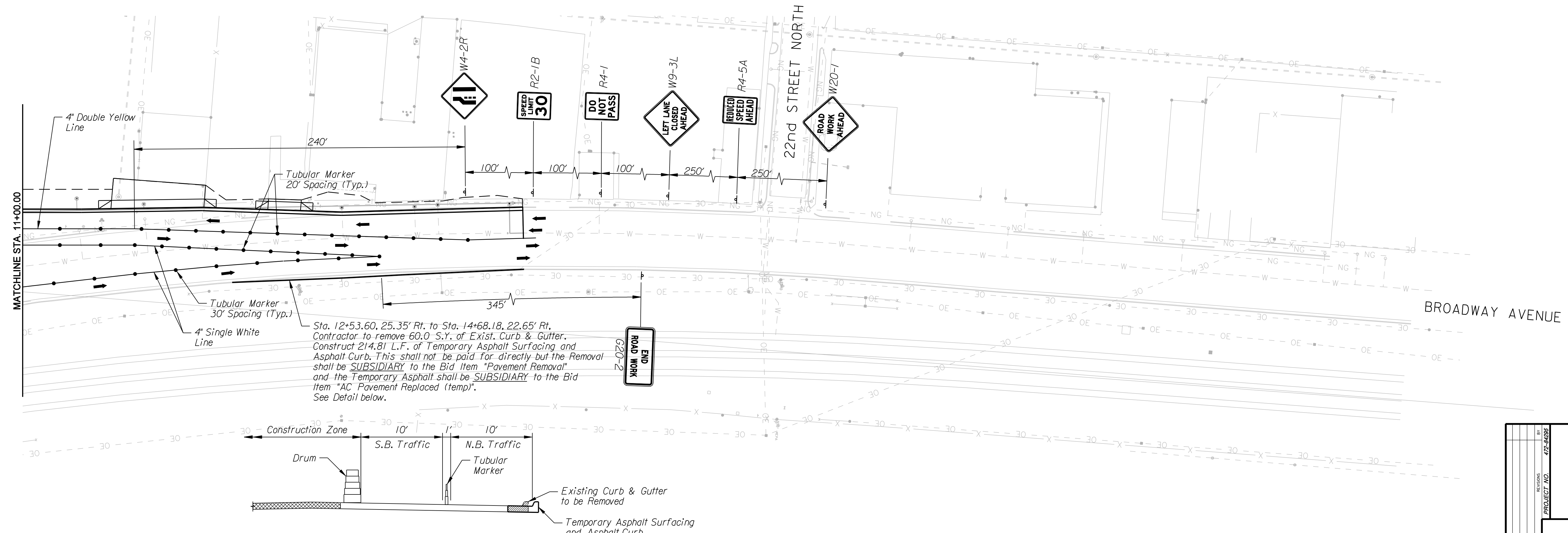
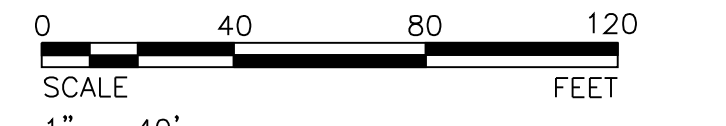
STATE	PROJECT NO.	YEAR	SHEET NO.	TOTAL SHEETS
KANSAS	472-84295	2010	87	194



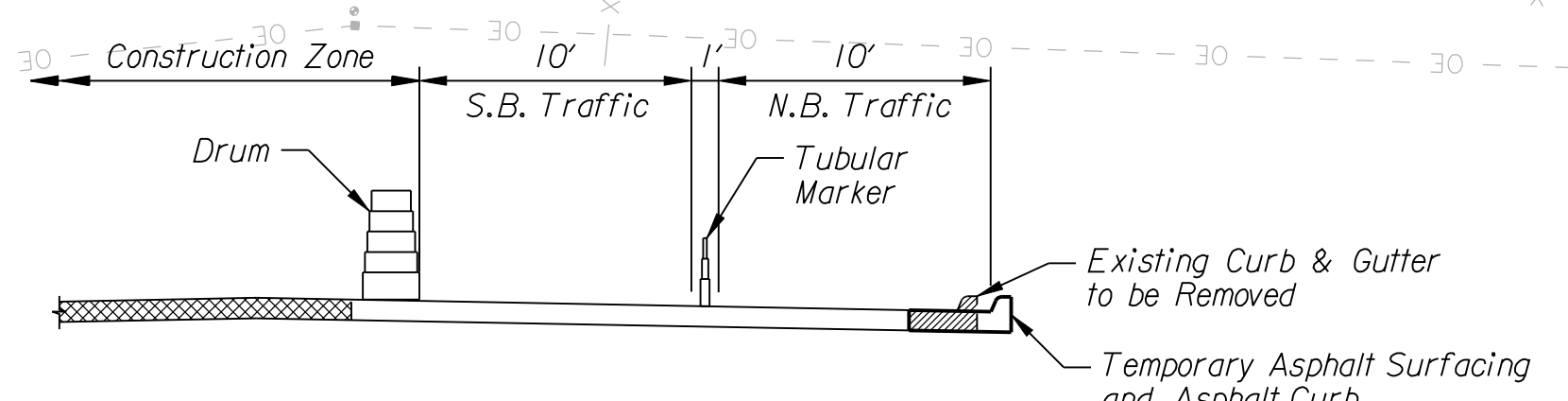
- LEGEND**
- Construction Zone
 - Drums
 - Tubular Marker



DATE	
BY	
REFERENCES NOTED	
REFERENCES CHECKED	



Sta. 12+53.60, 25.35' Rt. to Sta. 14+68.18, 22.65' Rt.
 Contractor to remove 60.0 S.Y. of Exist. Curb & Gutter.
 Construct 214.81 L.F. of Temporary Asphalt Surfacing and
 Asphalt Curb. This shall not be paid for directly but the Removal
 shall be SUBSIDIARY to the Bid Item "Pavement Removal"
 and the Temporary Asphalt shall be SUBSIDIARY to the Bid
 Item "AC Pavement Replaced (temp)".
 See Detail below.



TEMPORARY ASPHALT SURFACING AND ASPHALT CURB DETAIL

CITY OF WICHITA	
21ST STREET NORTH & BROADWAY AVENUE INTERSECTION	
TRAFFIC CONTROL ROAD CONSTRUCTION, PHASE 4	
STA. 6+79.80 TO STA. 10+00.00	
WICHITA, KANSAS	
DESIGNED	DATE
M.D.B.	D.A.N.
CHECKED	DATE
B.A.L.	1/8/2010



Plotted By: danavarrro
 Plotted: 1/8/2010
 File: g:\W05\0001\ROAD\001\tp4b.sht