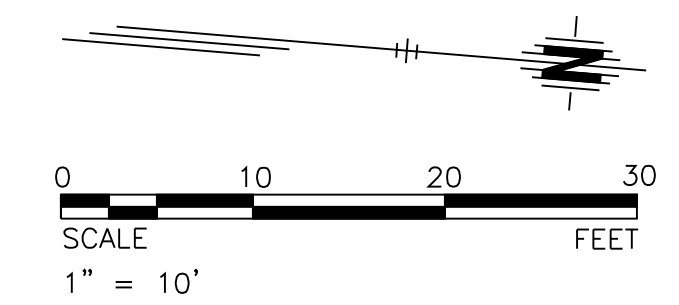
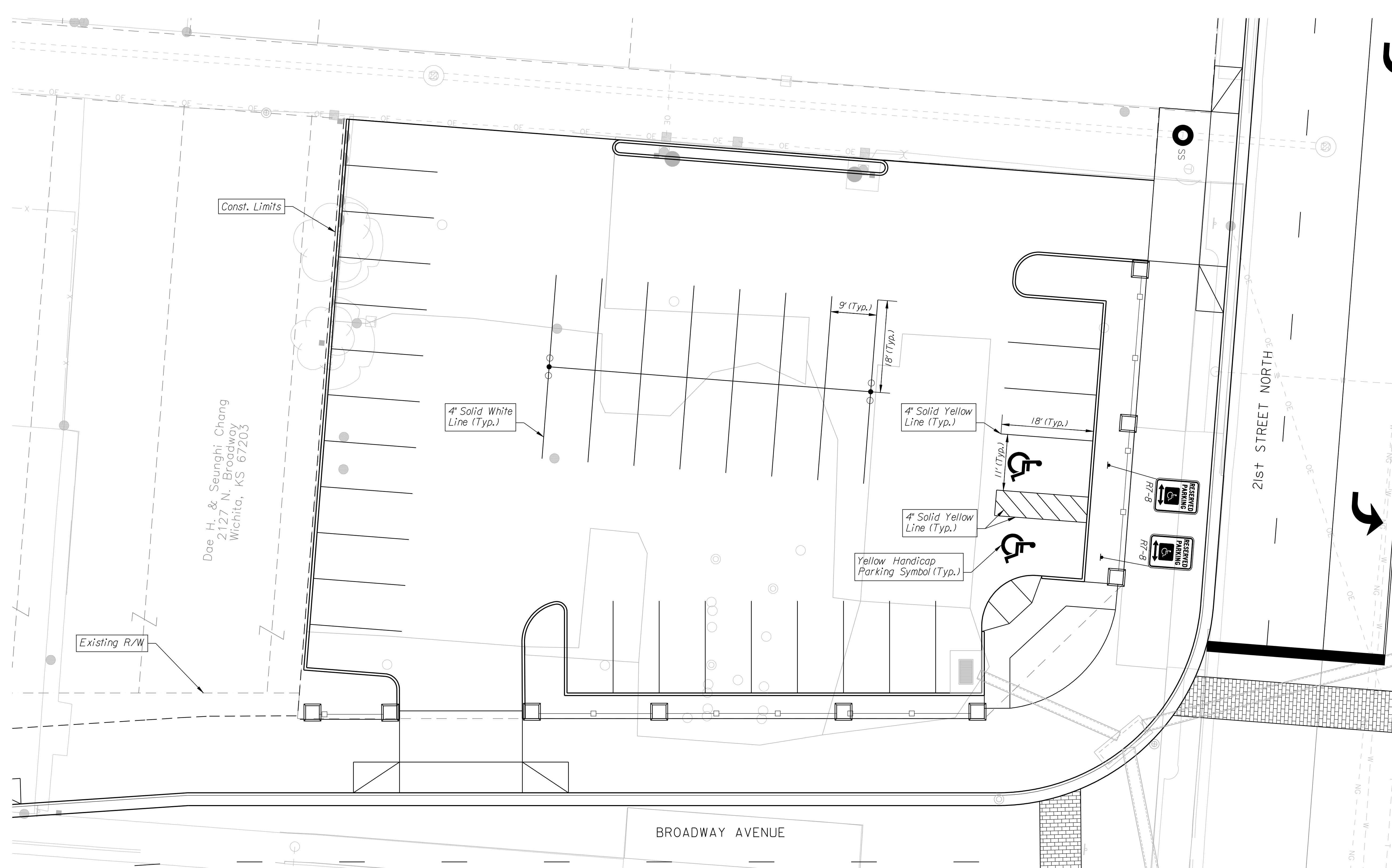


| | | | | |
|--------|-------------|------|-----------|--------------|
| STATE | PROJECT NO. | YEAR | SHEET NO. | TOTAL SHEETS |
| KANSAS | 472-84295 | 2010 | 110 | 194 |



NOTE:
Layout of Parking Lot Pavement Markings Shall meet the City of Wichita Typical Standards for Off-Street Parking.

| | |
|--------------------|------|
| BY | DATE |
| | |
| REFERENCES NOTED | |
| REFERENCES CHECKED | |



| *PAVEMENT MARKING | | |
|-------------------------------|----------|------|
| Bid Items | Quantity | UNIT |
| 4" Solid White Line | 747.0 | LF |
| 4" Solid Yellow Line | 8278.3 | LF |
| 4" Broken Yellow Line | 300.6 | LF |
| 6" Broken White Lane Line | 658.3 | LF |
| 6" Solid White Lane Line | 1152.4 | LF |
| 6" Solid White Crosswalk Line | 74.4 | LF |
| 12" Diagonal Yellow | 82.5 | LF |
| 24" White Stop Line | 371.1 | LF |
| Right Turn Arrows | 14 | EA |
| Left Turn Arrows | 12 | EA |
| ONLY | 3 | EA |
| Yellow Handicap Symbols | 2 | EA |
| Railroad Crossing Symbol | 2 | EA |

*QUANTITIES ARE FOR INFORMATION ONLY

\$[getvar, "dwgprefix"]\\$(getvar, "drawingname"), PlotTime\$(etime, 0, MON DD" ", YYYY - HHMM) (pm)
 Plotted By: danavarrro
 Plotted: 1/8/2010
 File: g:\W050001\ROAD\001\pm11.sht

| | |
|--|----------|
| CITY OF WICHITA | |
| 21ST STREET NORTH & BROADWAY AVENUE INTERSECTION | |
| PAVEMENT MARKING & SIGNING PROPOSED NOMAR PARKING SITE | |
| WICHITA, KANSAS | |
| DESIGNED | DRAWN |
| M.D.B. | D.A.N. |
| CHECKED | DATE: |
| B.A.L. | 1/8/2010 |

