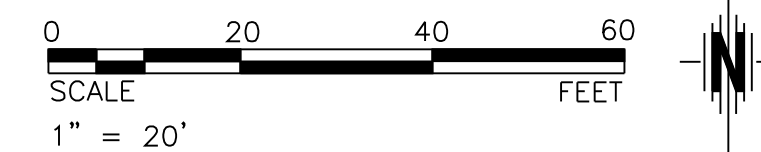


STATE	PROJECT NO.	YEAR	SHEET NO.	TOTAL SHEETS
KANSAS	472-84295	2010	121	194



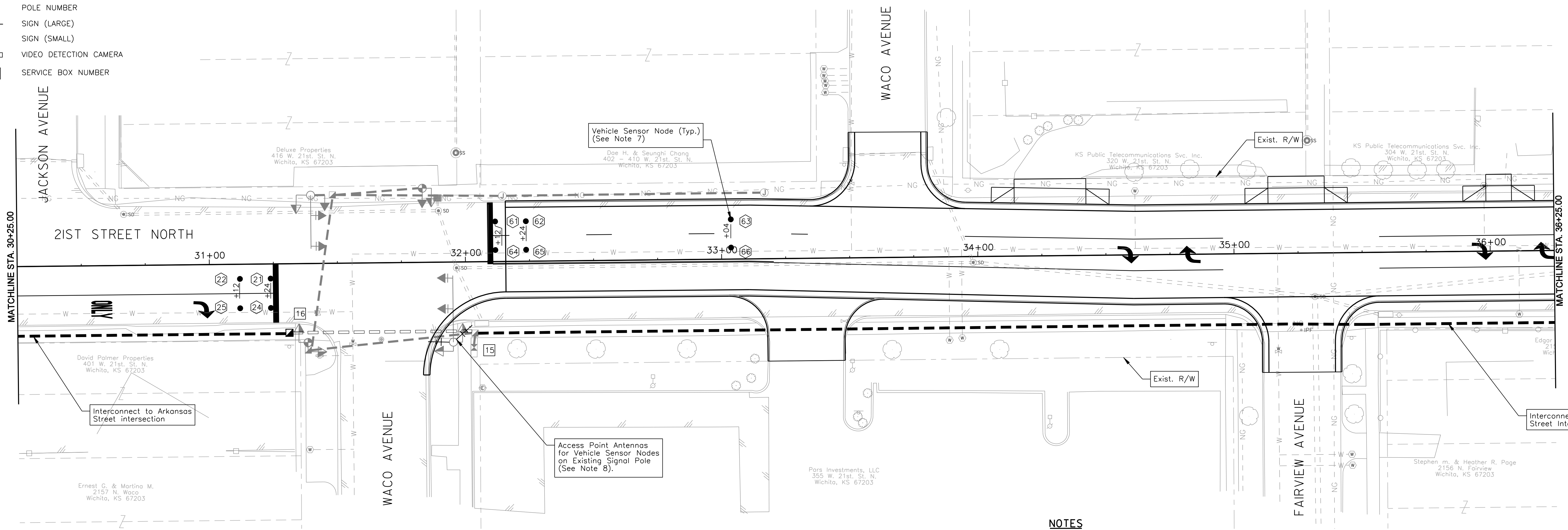
LEGEND

- | | | | |
|--|--------------------------------------|--|---|
| | METAL TRAFFIC SIGNAL POLE | | EXISTING METAL TRAFFIC SIGNAL POLE |
| | PEDESTRIAN SIGNAL INDICATION | | EXISTING PEDESTRIAN SIGNAL INDICATION |
| | TRAFFIC SIGNAL INDICATION | | EXISTING TRAFFIC SIGNAL INDICATION |
| | TRAFFIC SIGNAL WITH BACKPLATE | | EXISTING TRAFFIC SIGNAL WITH BACKPLATE |
| | MAST ARM SUSPENDED TRAFFIC SIGNAL | | EXISTING SERVICE BOX |
| | 36" SERVICE BOX | | EXISTING JUNCTION BOX |
| | JUNCTION BOX | | EXISTING CONDUIT |
| | CONDUIT (TRENCHED) | | VEHICLE SENSOR NODE |
| | CONDUIT (BORED) | | REPEATER OR ACCESS POINT ANTENNA FOR VEHICLE SENSOR NODES |
| | CONTROLLER AND CABINET (PAD MOUNTED) | | |
| | SECONDARY SERVICE POINT | | |
| | DETECTOR NUMBER | | |
| | VIDEO DETECTION ZONE | | |
| | LUMINAIRE | | |
| | P.B. PEDESTRIAN PUSH BUTTON | | |
| | POLE NUMBER | | |
| | SIGN (LARGE) | | |
| | SIGN (SMALL) | | |
| | VIDEO DETECTION CAMERA | | |
| | SERVICE BOX NUMBER | | |

SERVICE BOX LOCATIONS

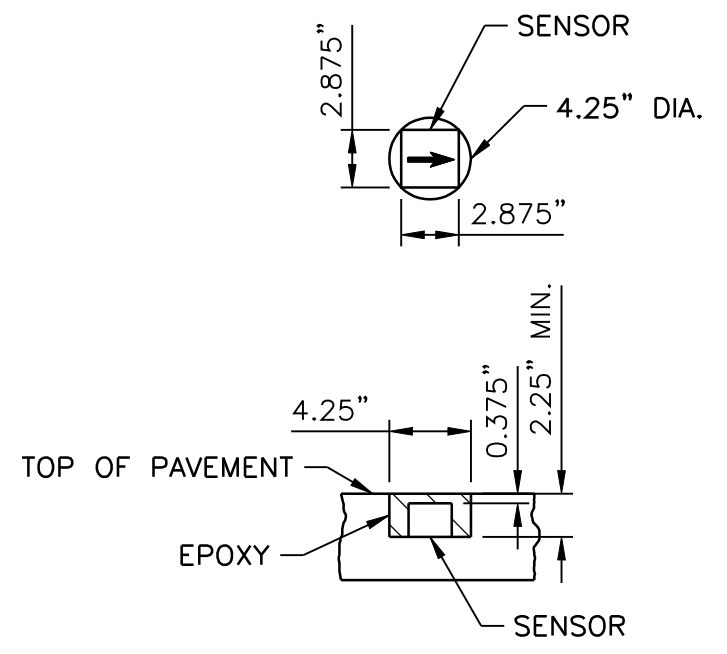
BOX NO.	STATION	OFFSET
*15	32+03.00	28.0' RT.
16	31+31.00	27.0' RT.

*EXISTING SERVICE BOX

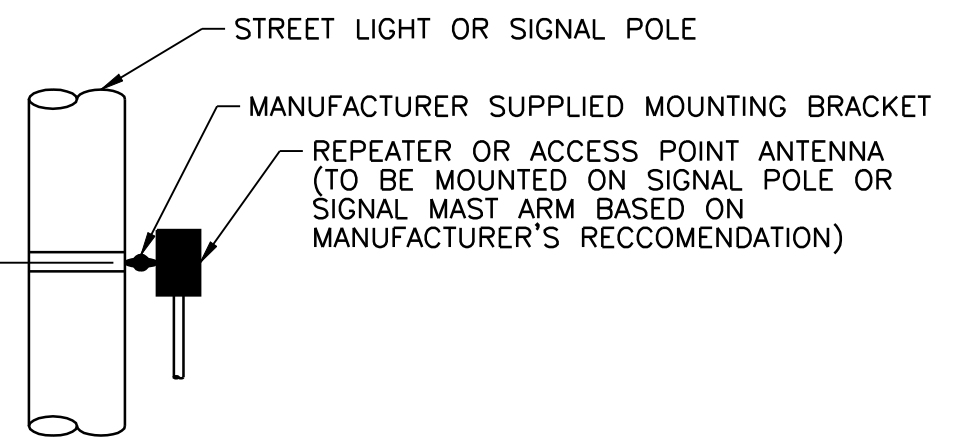


NODE INSTALLATION NOTES

- PRIOR TO INSTALLATION, NOTE SENSOR'S IDENTIFICATION NUMBER, LANE NUMBER, AND LOCATION IN LANE.
- UNLESS OTHERWISE SPECIFIED, INSTALL THE SENSOR IN CENTER OF LANE.
- CORE HOLE AT LEAST 2.25" DEEP, SO THAT WHEN INSTALLED THE TOP OF THE SENSOR IS AT LEAST 0.25" BELOW THE SURFACE.
- ENSURE SENSOR IS INSTALLED FLAT IN CORED HOLE, AND IS NOT TILTED.



VEHICLE SENSOR NODE INSTALLATION DETAIL (NTS)



VEHICLE SENSOR NETWORK POLE MOUNT DETAIL (NTS)

NOTES

- VEHICLE SENSOR LOCATIONS SHALL BE PAINTED ON THE PAVEMENT AND REVIEWED AND APPROVED BY THE ENGINEER.
- SERVICE AND JUNCTION BOXES AND CONDUIT RUNS ARE APPROXIMATE AND MAY BE FIELD ADJUSTED TO CLEAR OBSTRUCTIONS AND FACILITATE WIRING, AS APPROVED BY THE ENGINEER.
- ALL EQUIPMENT SHALL BE NEW UNLESS SHOWN OTHERWISE ON THE PLANS. THE CONTRACTOR SHALL REMOVE ALL EXISTING EQUIPMENT THAT IS NOT TO BE RE-USED. SIGNAL HEADS OR TRAFFIC SIGNS THAT CONFLICT WITH THE TRAFFIC CONTROL, SHALL BE COVERED OR REMOVED AND DELIVERED TO 1801 S. MCLEAN.
- EXISTING FEATURES AND UTILITIES ARE SHOWN FROM AVAILABLE INFORMATION AND SHOULD BE CONSIDERED APPROXIMATE ONLY. IT IS THE RESPONSIBILITY OF THE CONTRACTOR TO VERIFY UTILITIES AND THEIR EXACT LOCATION PRIOR TO CONSTRUCTION.
- SERVICE BOX 16 IS PART OF INTERCONNECT SYSTEM BETWEEN THE WACO AVENUE INTERSECTION (WEST) AND THE ARKANSAS STREET INTERSECTION (EAST). SEE SUCCEEDING SHEETS FOR ADDITIONAL INFORMATION.
- SENSYS NETWORKS VEHICLE SENSOR NODES SHALL BE INSTALLED AT THE WACO STREET INTERSECTION FOR THE EAST AND WEST LEGS AS SHOWN. INSTALLATION SHALL BE DONE TO SENSYS NETWORKS SPECIFICATIONS AND PER THE DETAILS SHOWN ON THIS SHEET. THE CONTRACTOR SHALL REUSE THE EXISTING HARDWARE, POLES, MAST ARMS AND CONTROLLER IN PLACE. THE CONTRACTOR WILL BE RESPONSIBLE FOR REPLACING THE EXISTING INDUCTIVE LOOP ON THE SOUTH APPROACH IF IT IS DAMAGED DURING CONSTRUCTION. THE INDUCTIVE LOOPS, LOOP CONDUIT AND LOOP JUNCTION BOXES ON THE EAST AND WEST APPROACHES WILL BE REMOVED BY THE CONTRACTOR WITHIN THE LIMITS OF THE PAVEMENT/SIDWALK REPLACEMENT. THE INDUCTIVE LOOPS, LOOP CONDUIT AND LOOP JUNCTION BOXES ON THE EAST AND WEST APPROACHES IN AREAS WHERE SIDEWALK REPLACEMENT IS NOT TAKING PLACE.
- ACCESS POINT ANTENNAS AND REPEATERS FOR USE WITH VEHICLE SENSOR NODES SHALL BE INSTALLED WITHIN DIRECT LINE-OF-SITE WITH EACH OTHER. INSTALLATION SHALL BE IN ACCORDANCE WITH SENSYS NETWORKS SPECIFICATIONS AND PER DETAILS SHOWN ON THIS SHEET.

DATE	
BY	
REFERENCES NOTED	
REFERENCES CHECKED	

Plotted By: danavarro
 File: g:\W05\0001\ROAD\001\ts04.sht
 \$[getvar, "dwgprefix"]\\$(getvar, "drawingname"). Plotter:\$(etime, 0, MON DD", "YYYY - HHMM", pm)

CITY OF WICHITA
 21ST STREET NORTH &
 BROADWAY AVENUE INTERSECTION
 21ST STREET INTERCONNECT
 WICHITA, KANSAS

TranSystems

DESIGNED	M.D.B.	DRAWN	D.A.N.
CHECKED	B.A.L.	DATE:	1/8/2010