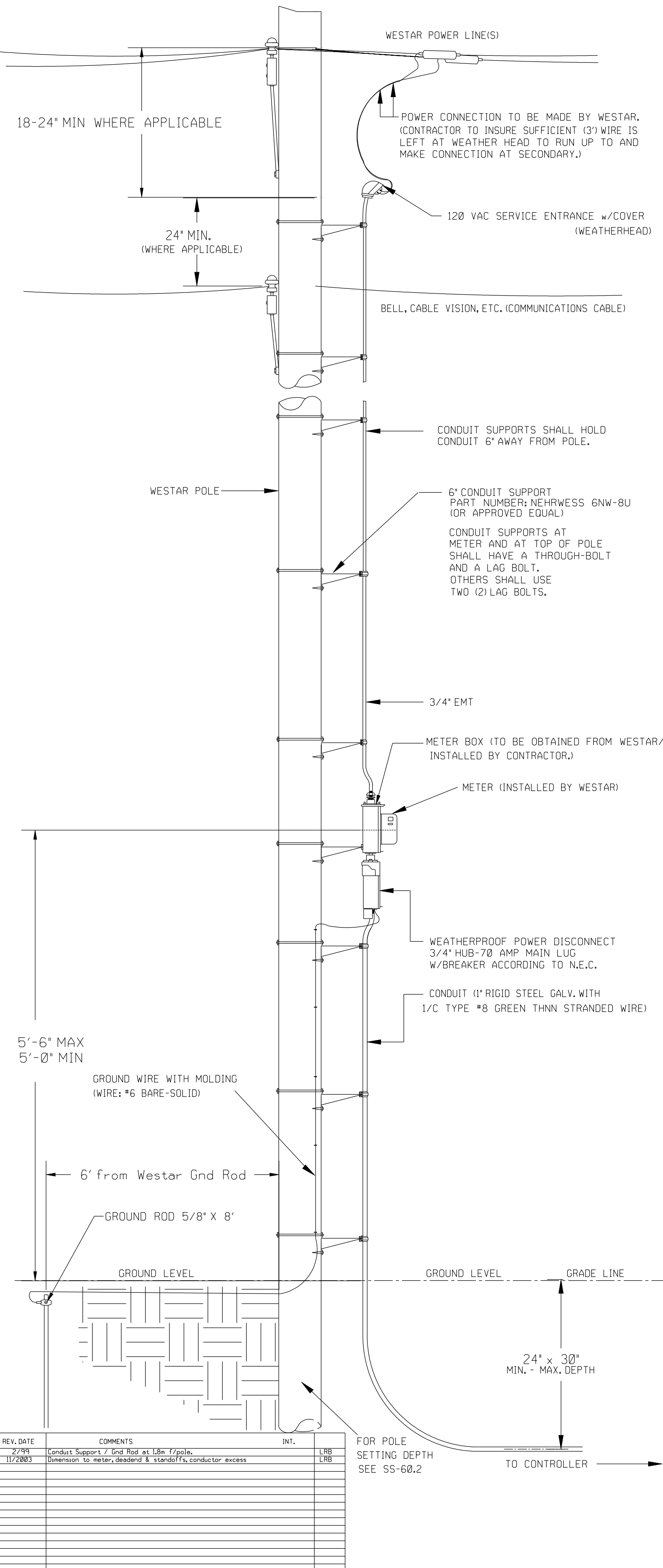
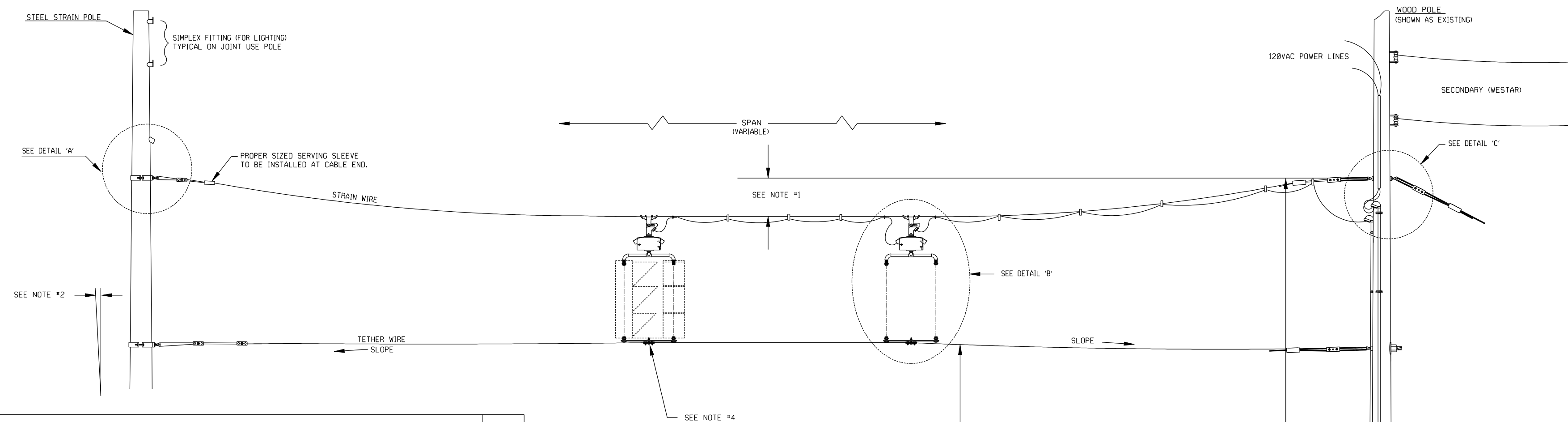


POWER POLE DETAILS



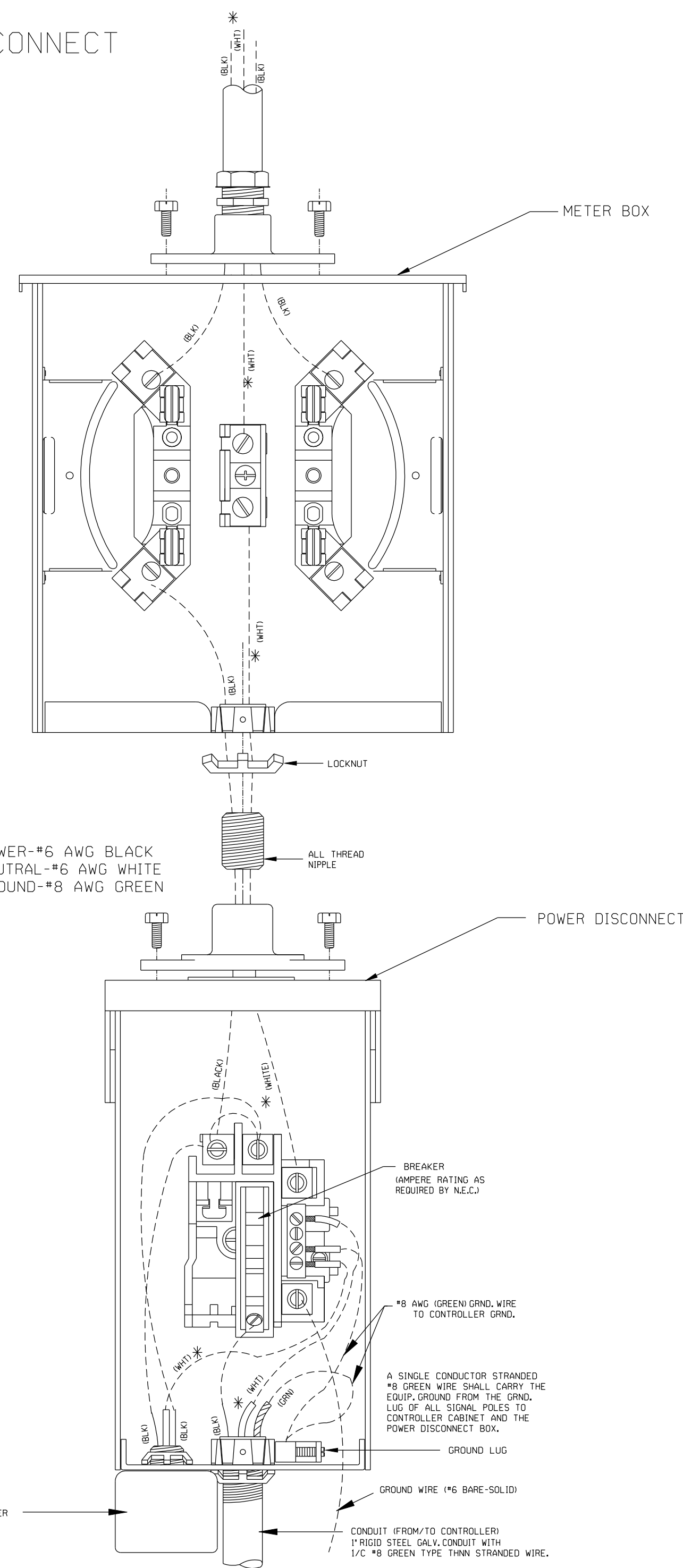
SPANWIRE ASSEMBLY DETAILS

1. MAX. SAG = 5% OF SPAN.
2. STANDARD BACKRAKE = 1.5\*
3. HEIGHT OF STRAIN WIRE HOOK-UP TO BE DETERMINED BY FIELD ENGINEER. TRAFFIC SIGNAL CABLE TO BE SECURED TO STRAIN (SPAN) WIRE WEATHERABLE NYLON CABLE HANGERS (12" CTR.) DETAIL 'B'
4. TETHER CLAMP TO BE DESIGNED TO RELEASE UNDER 'HIGH WIND LOAD' TO PERMIT SIGNAL 'FREE SWING'.

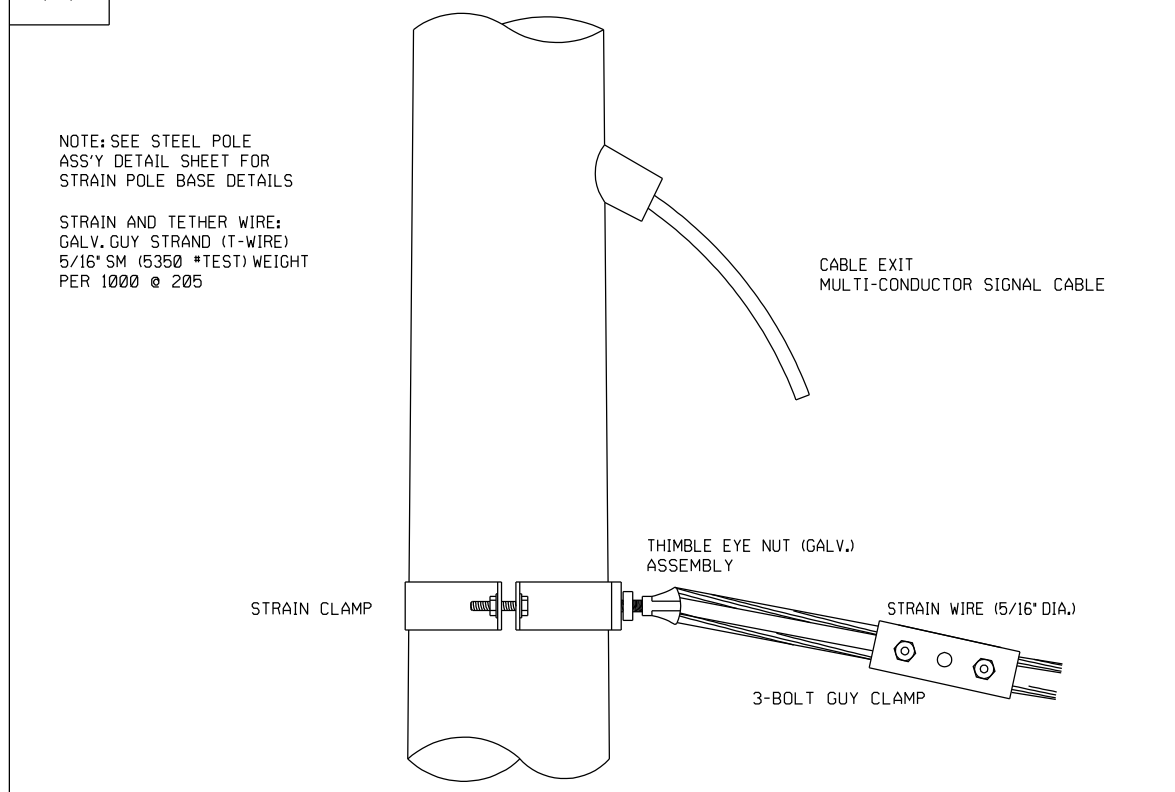


METER BOX & POWER DISCONNECT DETAILS

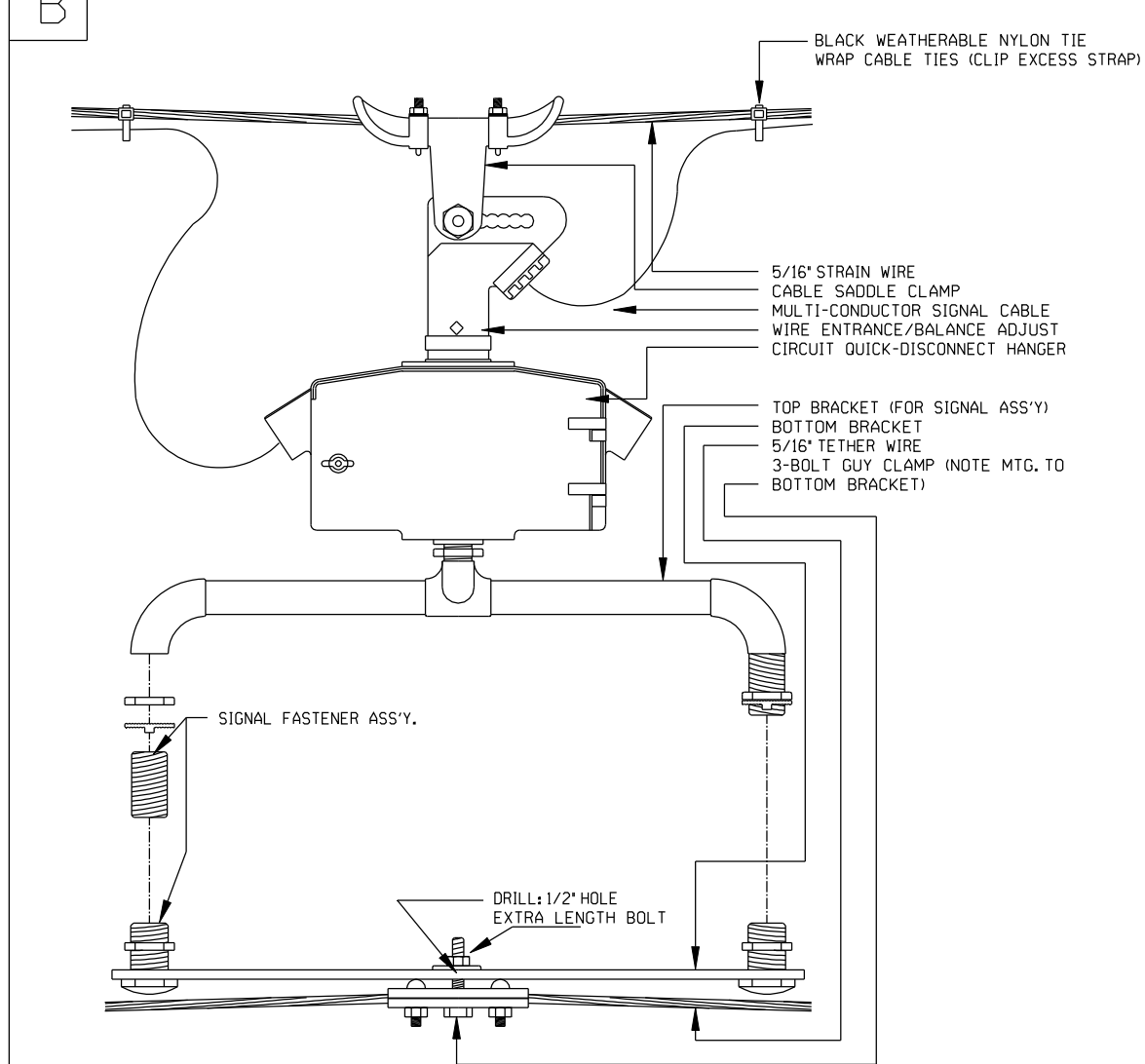
NOTE:  
\* TO BE MARKED WITH WHITE TAPE



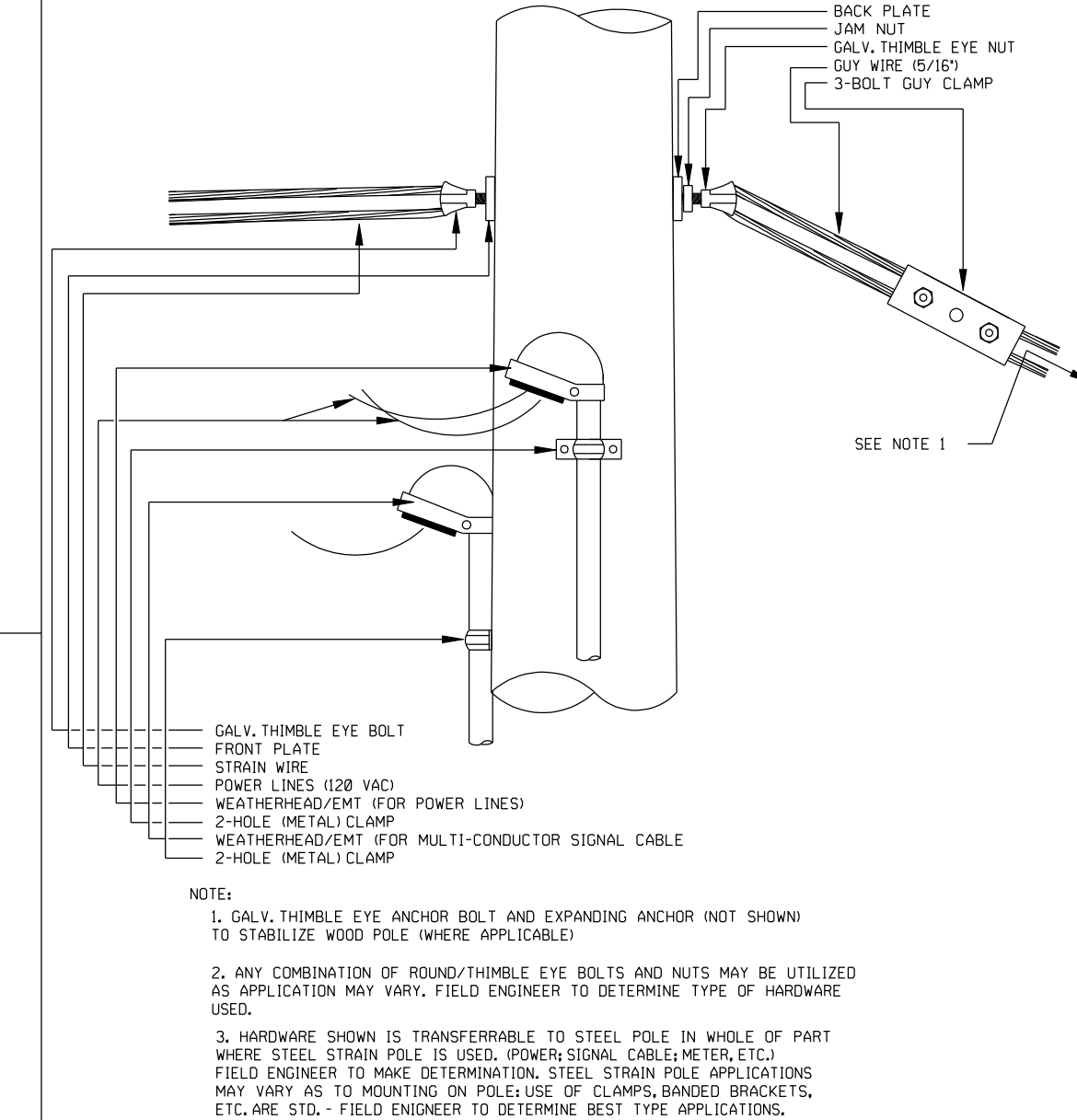
STRAIN POLE ASSEMBLY



SIGNAL BRACKET ASSEMBLY DETAILS



WOOD POLE ASSEMBLY DETAILS WESTAR POLE EXCLUDED



POWER POLE AND SPAN POLE ASSEMBLY DETAILS

PROJECT DESCRIPTION		
POWER POLE AND SPAN POLE ASSEMBLY DETAILS		
PROJECT NUMBER		
472-84295		
DRAWN BY: T.M.	APPROVED BY:	REVISED BY: L.B.
DATE: FEB. 96		DATE: 2/26/99
CITY OF WICHITA DEPARTMENT OF PUBLIC WORKS		
DIVISION OF TRAFFIC ENGINEERING		SCALE
PAUL D. GUNZELMAN, P.E., TRAFFIC ENGINEER		NO SCALE 125