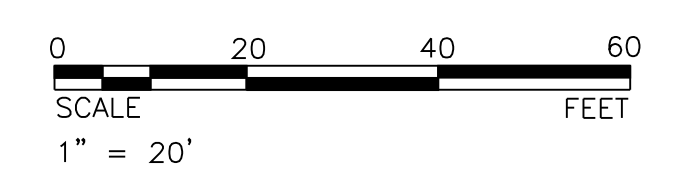


STATE	PROJECT NO.	YEAR	SHEET NO.	TOTAL SHEETS
KANSAS	472-84295	2010	136	194



Note:
 1. All new and replaced water services shall be tapped only on the 8" and 12" Water Lines, not on the 20" Water Line.
 2. All 8" Stubs on sidestreets shall be 5' deep.
 3. New road construction has been left off for Water Line clarity. Refer to road construction sheets to see Water Line placement in reference to the new road construction.

All Control and Coordinate Data is located on Sht. 135

Water Line I Profile, See Shts. 138-140

DATE	
BY	
REFERENCES NOTED	
REFERENCES CHECKED	

703
 Sta. 101+88.42, Line 1
 BL Sta. 32+19.76, 15.63' Lt.
 Install 1 - 12" Anchored Butterfly Valve Assem. (E)
 Install 1 - 12" x 12" Tee (S)
 Install 1 - 12" Anchored Butterfly Valve Assem. (S)
 Install 12.33 L.F. 12" Pipe (S)
 Install 4.00 L.F. 12" Pipe (W)
 Install 1 - 12" MJ Cap (W)

701 702
 Sta. 101+88.42, Line 1
 BL Sta. 32+19.74, 3.30' Lt.
 Install 1 - 12" 90° Bend (W)
 Install 2.50 L.F. 8" Pipe (W)
 Connect to Existing 8" (W)
 Install 1 - 8" MJ Cap (E)

707 708
 Sta. 103+18.97, Line 1
 BL Sta. 33+51.18, 54.06' Lt.
 Remove Existing 2" Valve
 Install 1 - 2" MJ Cap (S)
 Install 1 - 2" 90° Bend (N)
 Install 5.00 L.F. 2" Pipe (N)
 Connect to Existing 2" (N)

704
 Sta. 101+91.57, Line 1
 BL Sta. 32+22.91, 15.62' Lt.
 City to Install 1" Service Tap and Meter for Irrigation (S)

704
 Sta. 102+79.31, Line 1
 BL Sta. 33+10.65, 15.50' Lt.
 Begin 12" Pipe Deflection

90.89 L.F. 12" Pipe

39.46 L.F. 8" Pipe

Caution! 6" Natural Gas Line

43.13 L.F. 12" Pipe

767
 Sta. 103+22.63, Line 1
 BL Sta. 33+54.95, 59.00' Lt.
 Install 1 - 8" MJ Cap (N)
 Install 1 - 2" Blowoff Assembly (N)

706
 Sta. 103+22.61, Line 1
 BL Sta. 33+54.82, 54.00' Lt.
 Install 1 - 8" x 4" Tee (W)
 Install 1 - 4" x 2" Reducer (W)
 Install 5.00 L.F. 8" Pipe (N)
 Install 3.64 L.F. 2" Pipe (W)

705
 Sta. 103+22.44, Line 1
 BL Sta. 33+53.76, 14.54' Lt.
 Install 1 - 12" x 8" Tee (N)
 Install 1 - 8" Anchored Valve (N)

59.02 L.F. 12" Pipe

711
 Sta. 103+81.46, Line 1
 BL Sta. 34+12.78, 13.23' Lt.
 End 12" Pipe Deflection

106.18 L.F. 12" Pipe

713
 Sta. 104+87.64, Line 1
 BL Sta. 35+18.95, 12.58' Lt.
 Install 1 - 12" x 8" Tee (S)
 Install 1 - 8" Anchored Valve (S)

Caution! 4" Natural Gas Line

768
 Sta. 106+51.23, Line 1
 BL Sta. 36+82.81, 55.84' Lt.
 Install 1 - 8" MJ Cap (N)
 Install 1 - 2" Blowoff Assembly (N)

722 723
 Sta. 106+49.28, Line 1
 BL Sta. 36+80.83, 50.84' Lt.
 Remove Existing 6" Valve
 Install 1 - 6" MJ Cap (S)
 Install 1 - 6" 90° Bend (N)
 Install 5.00 L.F. 6" Pipe (N)
 Connect to Existing 6" (N)

39.26 L.F. 8" Pipe

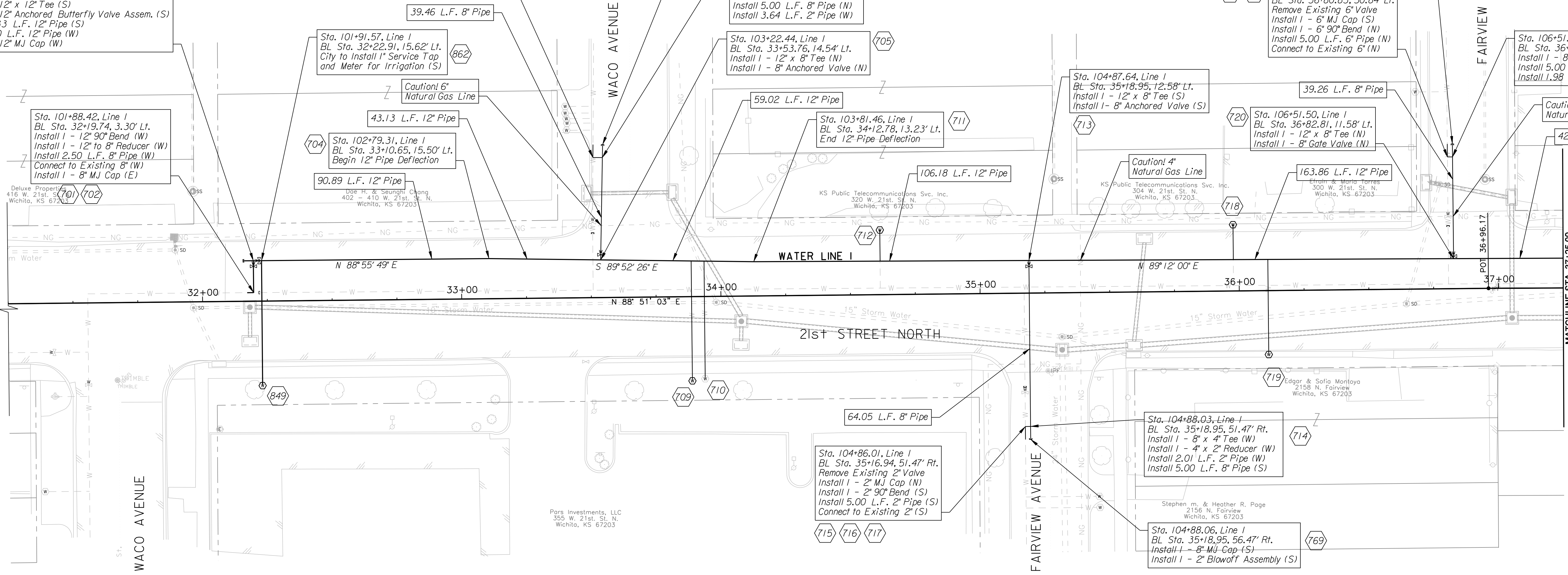
720
 Sta. 106+51.50, Line 1
 BL Sta. 36+82.81, 11.58' Lt.
 Install 1 - 12" x 8" Tee (N)
 Install 1 - 8" Gate Valve (N)

163.86 L.F. 12" Pipe

721
 Sta. 106+51.26, Line 1
 BL Sta. 36+82.81, 50.84' Lt.
 Install 1 - 8" x 6" Tee (W)
 Install 5.00 L.F. 8" Pipe (N)
 Install 1.98 L.F. 6" Pipe (W)

Caution! 6" Natural Gas Line

42.19 L.F. 12" Pipe



Plotted By: danavarrro
 Plotted: 1/18/2010
 File: g:\W05\0001\ROAD\001\wp01.sht

CITY OF WICHITA	
21ST STREET NORTH & BROADWAY AVENUE INTERSECTION	
WATER LINE PLANS	
21ST STREET NORTH	
STA. 32+7.25 TO STA. 37+25.00	
WICHITA, KANSAS	
DESIGNED	DATE
M.D.B.	D.A.N.
CHECKED	DATE
B.A.L.	1/18/2010

TranSystems