

Note:
 1. All new and replaced water services shall be tapped only on the 8" and 12" Water Lines, not on the 20" Water Line.

2. New road construction has been left off for Water Line clarity. Refer to road construction sheets to see Water Line placement in reference to the new road construction.

All Control and Coordinate Data is located on Sht. 135

Water Line 3 Profile, See Shts. 144-145

Water Line 3A Profile, See Sht. 145

Water Line 3B Profile, See Sht. 145

Water Line 4 Profile, See Shts. 145-146

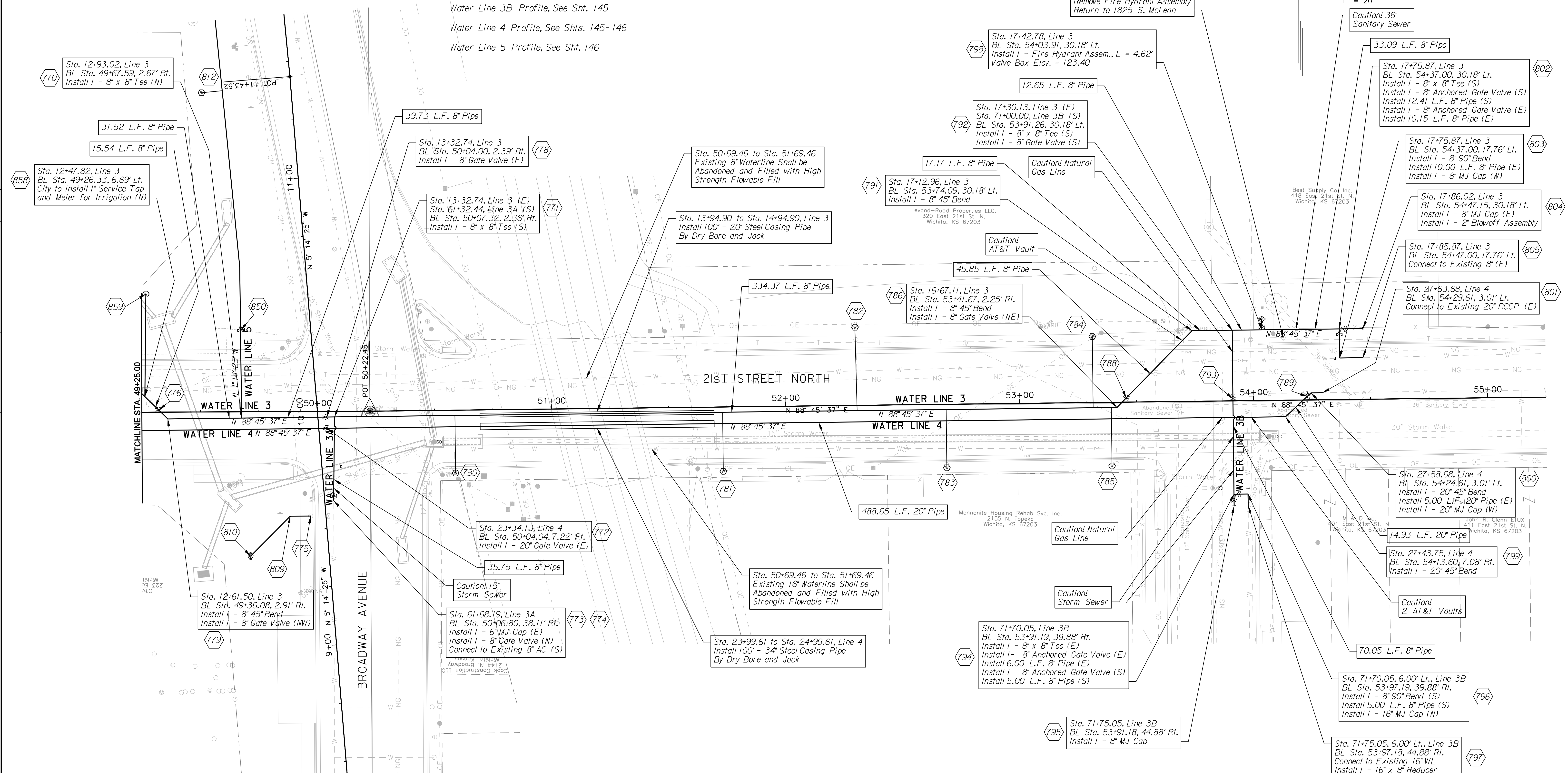
Water Line 5 Profile, See Sht. 146

STATE	PROJECT NO.	YEAR	SHEET NO.	TOTAL SHEETS
KANSAS	472-84295	2010	141	194



DATE	BY

Plotted By: mdbaliley
 Plotted: 2/2/2010
 File: g:\W0510001\Road1001\wp04.sht



CITY OF WICHITA
 21ST STREET NORTH &
 BROADWAY AVENUE INTERSECTION
 WATER LINE PLANS
 21ST STREET NORTH
 STA. 49+25.00 TO STA. 54+47.00
 WICHITA, KANSAS

DESIGNED	M.D.B.	D.A.N.
CHECKED	B.A.L.L.	2/2/2010