

STATE	PROJECT NO.	YEAR	SHEET NO.	TOTAL SHEETS
KANSAS	472-84295	2010	147	194

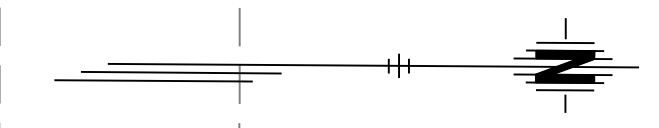
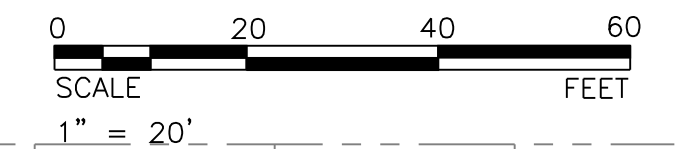
Note:  
 1. All new and replaced water services shall be tapped only on the 8" and 12" Water Lines, not on the 20" Water Line.

2. New road construction has been left off for Water Line clarity. Refer to road construction sheets to see Water Line placement in reference to the new road construction.

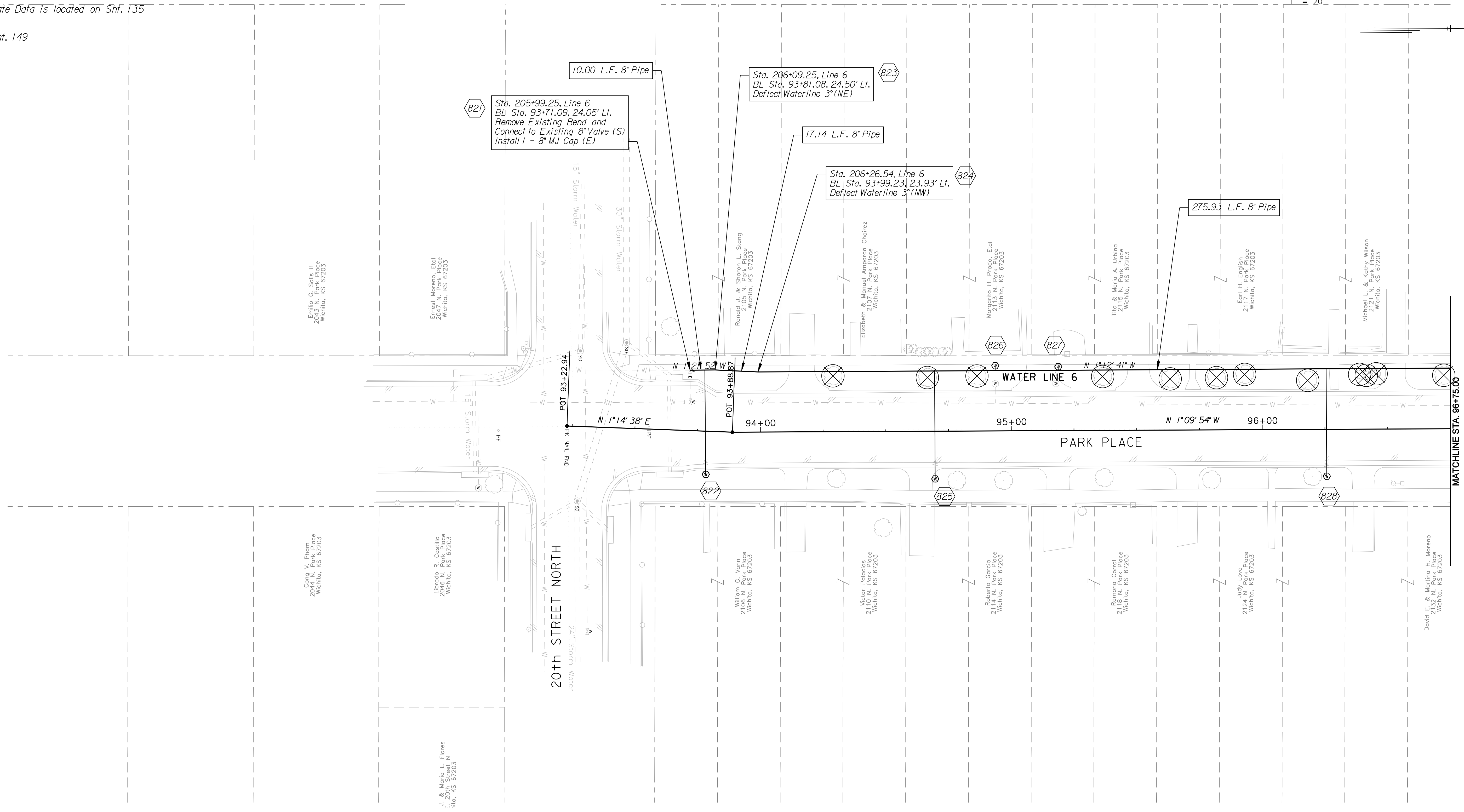
LEGEND  
 Tree Removal

# All Control and Coordinate Data is located on Sht. 135

Water Line 6 Profile, See Sht. 149



DATE	BY
REFERENCES NOTED	
REFERENCES CHECKED	



\$getenv, "dwgprefix"\$(getenv, "dwgname"), Plotter\$(etime, 0, MON DD, "YYYY - HHMM/pm")  
 Plotted By: danavarrro  
 File: g:\W05\0001\ROAD\001\wp07.sht

CITY OF WICHITA	
21ST STREET NORTH & BROADWAY AVENUE INTERSECTION	
PROPOSED PLAN & PROFILE	
PARK PLACE	
STA. 93+71.09 to STA. 96+75.00	
WICHITA, KANSAS	
DESIGNED	DRAWN
M.D.B.	D.A.N.
CHECKED	DATE
B.A.L.	1/8/2010

