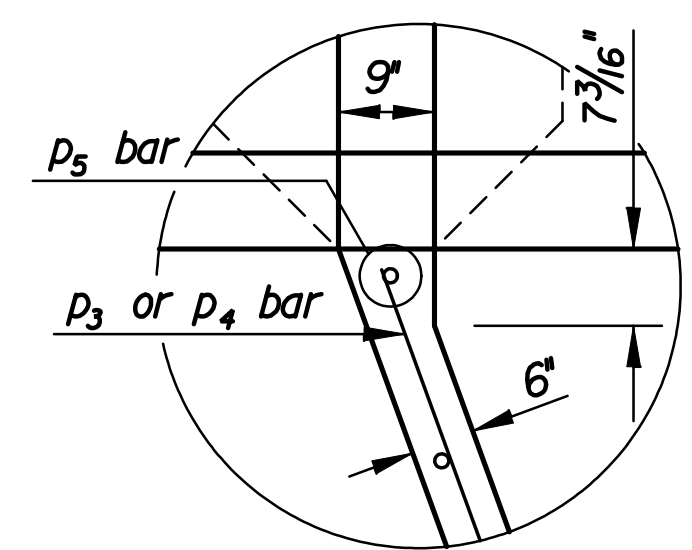
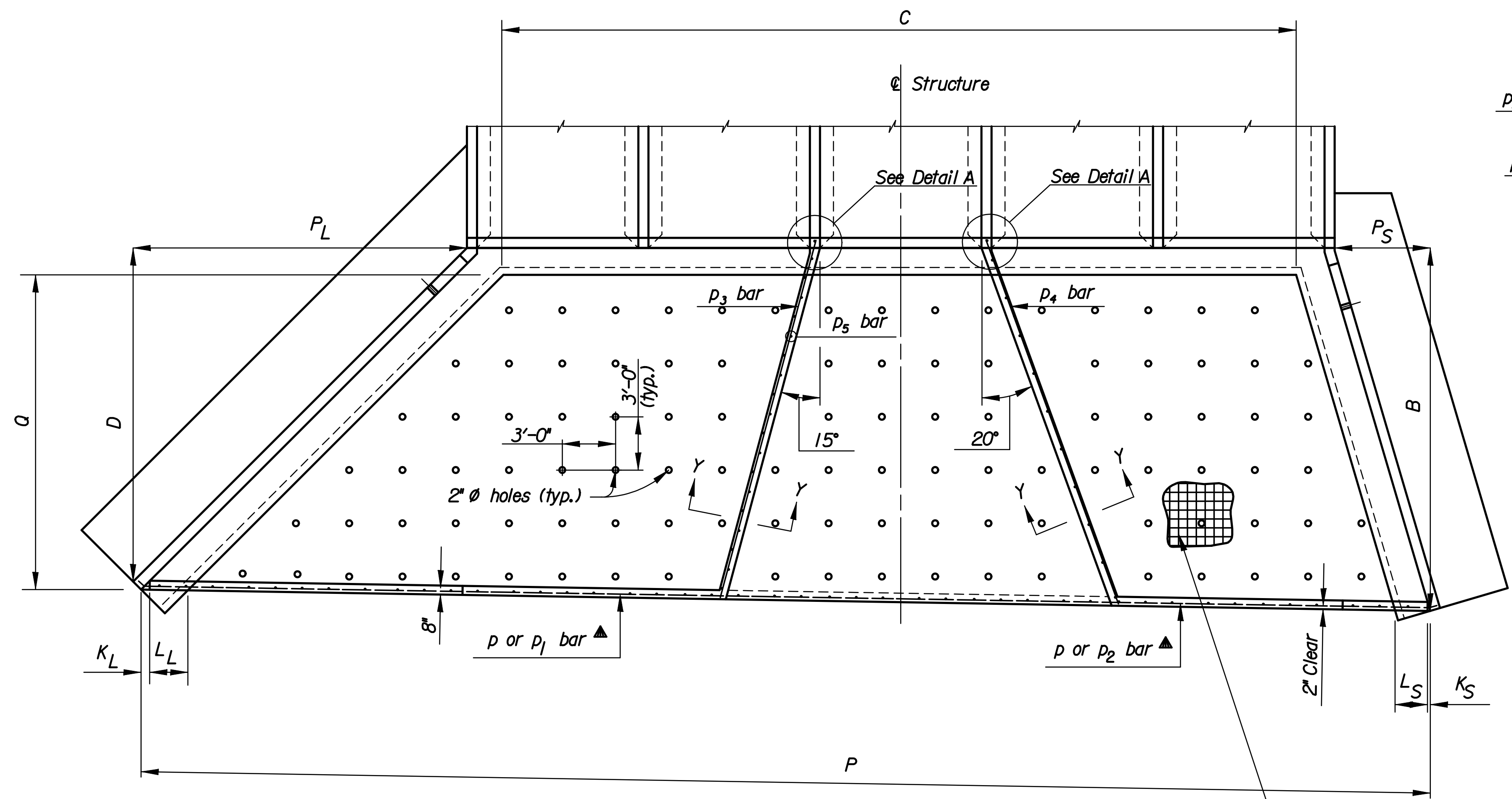


STATE	PROJECT NO.	YEAR	SHEET NO.	TOTAL SHEETS
KANSAS	87 N-0514-01	2010	47	148

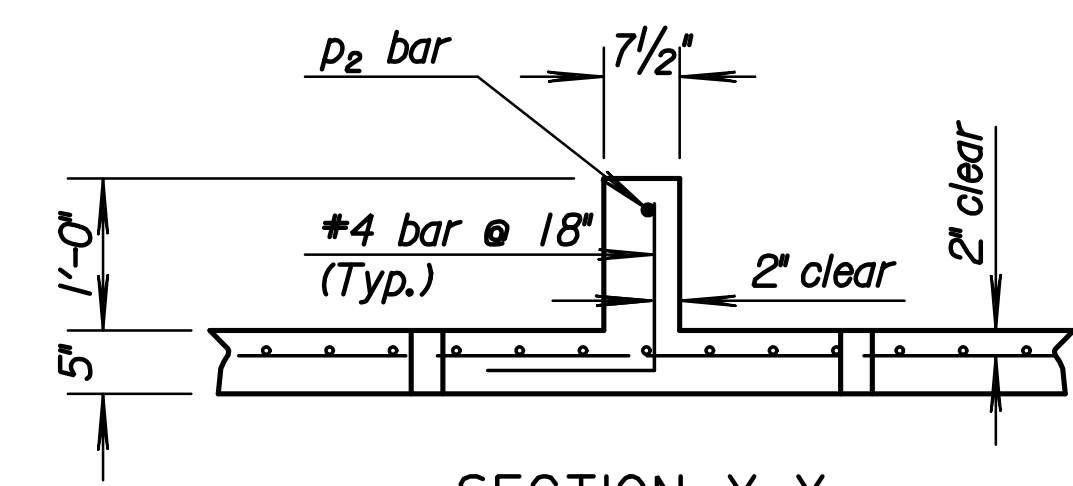
GENERAL NOTE

CONCRETE: Concrete Grade 4.0 shall be used throughout. All exposed edges shall be finished with an edging tool.
 REINFORCING: All dimensions are to ϕ of bar except where noted. All reinforcing bars are No. 4. Reinforcing bars shall be Grade 60 billet steel. Minimum clearance on all reinforcement shall be 2".
 Welded wire reinforcement shall be paid as pounds of reinforcing steel. When holes in the apron are warranted by drainage conditions they shall be constructed as directed by the Engineer.

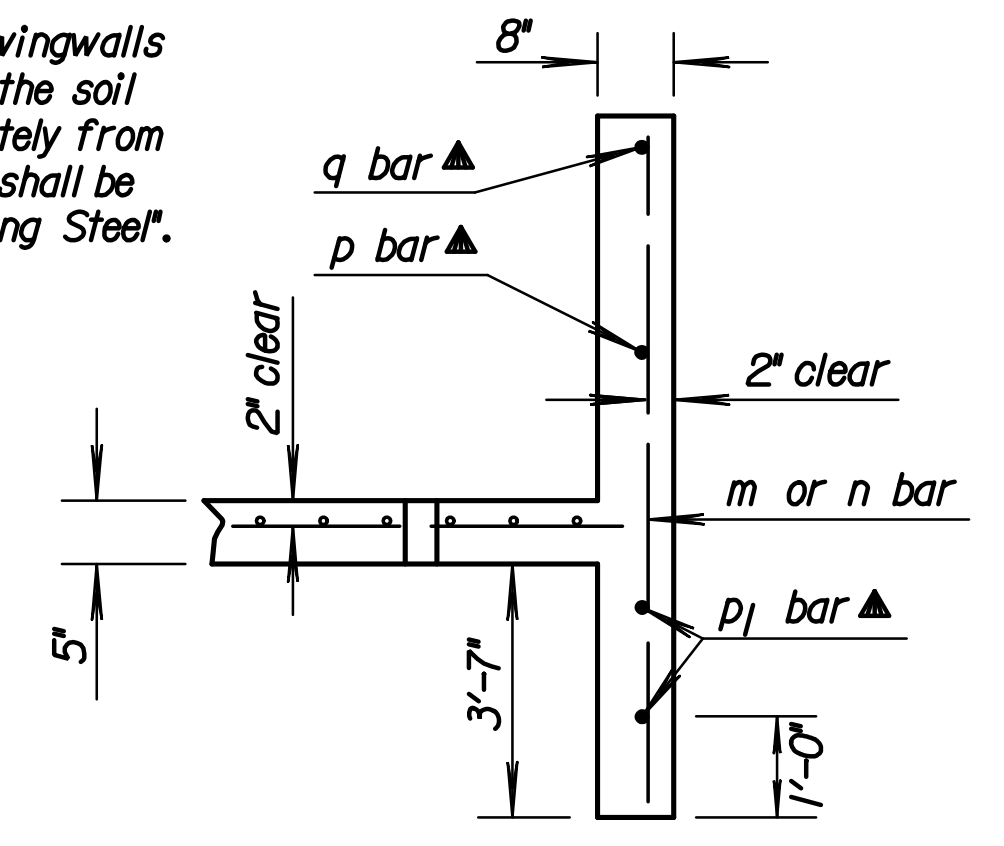


DETAIL A

▲ Drill and grout p and q bars into wingwalls and p₁ bar into wing footings when the soil saver end wall is constructed separately from the wingwalls. Drilling and grouting shall be Subsidiary to the bid item "Reinforcing Steel".



SECTION Y-Y



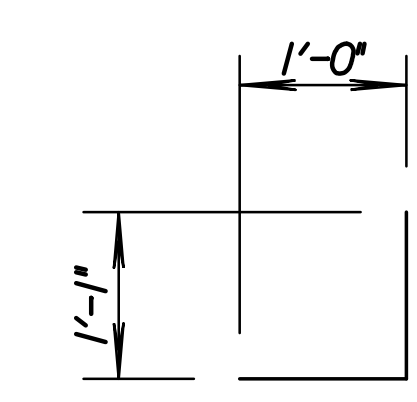
SECTION X-X

Varies from 4'-8" to 12'-5" by 5 3/4" Incr.
Cut 1 Each Length

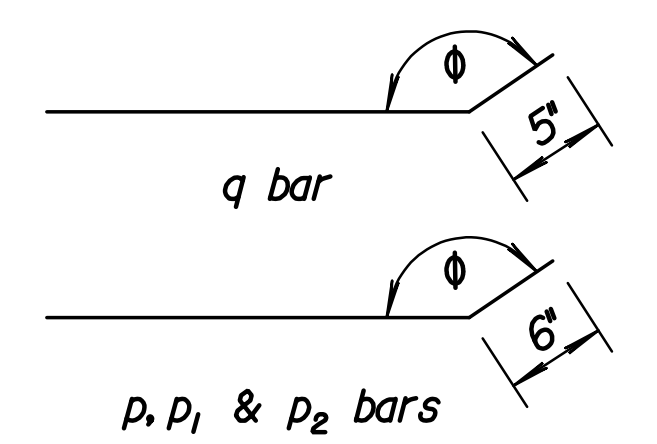
Varies from 4'-8" to 6'-10" by 6 1/4" Incr.
Cut 1 Each Length

n bar

n₁ bar



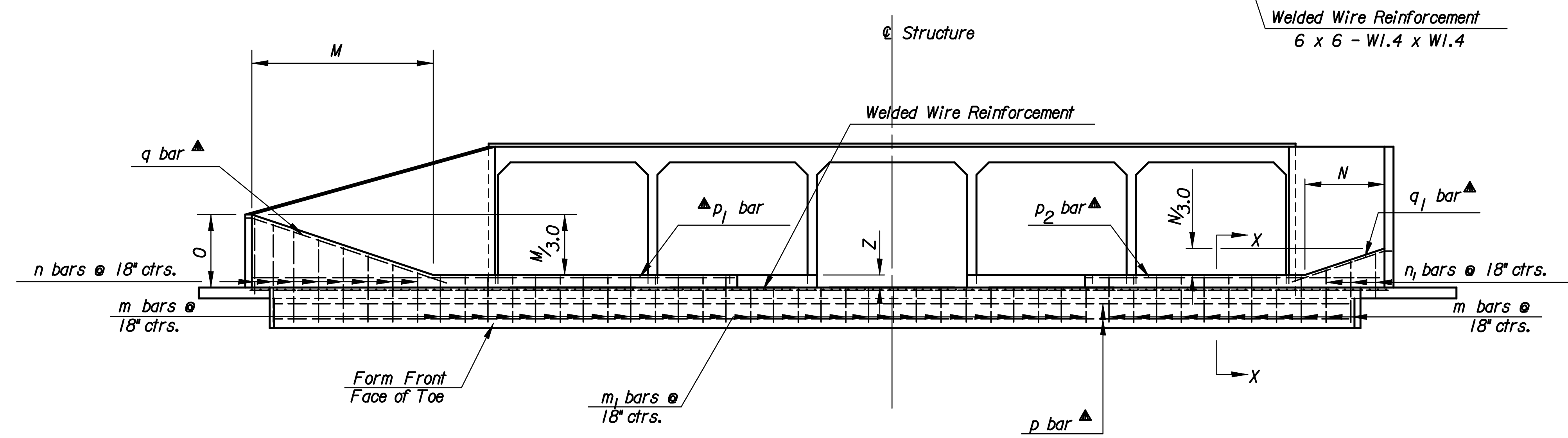
p₅ bar



p, p₁ & p₂ bars

∅ Angle varies according to skew of RCB. Bars shall be field bent.

BENDING DIAGRAMS



Welded Wire Reinforcement
6 x 6 - W1.4 x W1.4

Welded Wire Reinforcement

Form Front Face of Toe

SUMMARY OF SOIL SAVERS										
Station	Culvert Size	Side	Z	Skew						
5+86.19	5-12'x10'	Left	1'-0"	—						

STATION 5+86.19	SIDE LEFT				SKEW 00°				Z= 1'-0"					
	B	C	D	K _L	K _S	L _L	L _S	M	N	O	P	P ₁	P _S	Q
Dimension	26'-10 1/8"	58'-10 3/16"	24'-9 1/16"	0'-7 3/4"	0'-2 1/2"	2'-10"	2'-4 9/16"	22'-6"	6'-6"	8'-6"	95'-10 1/8"	24'-9 1/16"	7'-1"	23'-4 1/4"
Bar	m	m ₁	n*	n ₁ *	p*	p ₁ *	p ₂ *	p ₃	p ₄	p ₅ *	q*	q ₁		
Number	27	20	17	5	4	1	1	1	1	39	1	1		
Length	4'-8"	3'-8"	Varies	Varies	50'-0"	43'-6"	24'-0"	27'-6"	28'-9"	2'-1"	29'-2"	8'-4"		
											Sq. Ft. WWR	1562	Sq. Ft. Conc.	40.9
											Reinf. steel	545	Cu. Yd.	

Quantities include apron and soil saver end wall.
Quantities are included on the SW wingwall sheet.

* See bending diagrams.

Plotted By: rjm Plotted: 2/17/2010 File: i:\2008\08778\Office Check\08778-047-SoilSaver_5-10x12up.dgn



NO.	DATE	REVISIONS	BY	APP'D
2	04-28-05	Chg. Class to Grade concrete, WWR	S.W.K.	J.O.B.
1	08-01-00	Revised Drill & Grout Note	R.J.S.	J.O.B.

CITY OF WICHITA
127TH ST. STA. 5+86.19
SOIL SAVER FOR R.C. CULVERTS
127th and Harry St.
RD520
FHWA APPROVAL 6-10-05 APP'D. James O. Brewer
DESIGNED QUANTITIES TRACED BOWSER
DESIGN CK. DETAIL CK. QUAN. CK. TRACE CK. Seltz