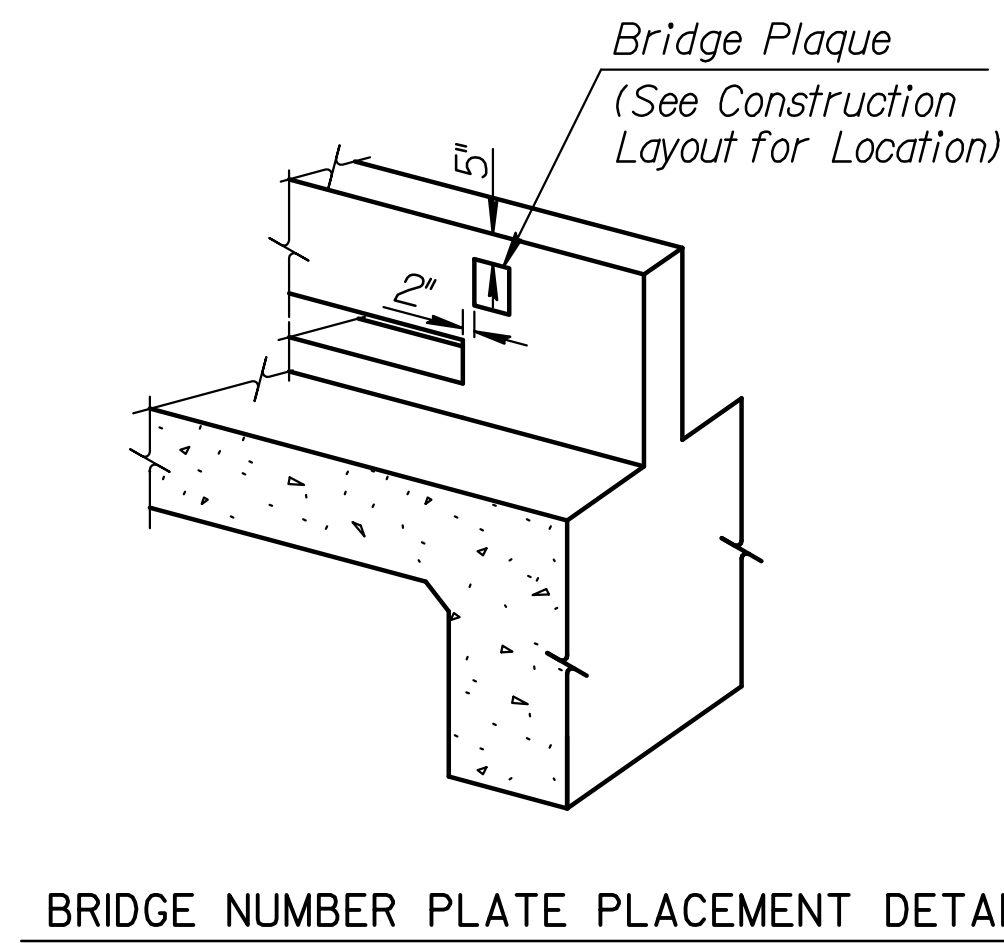
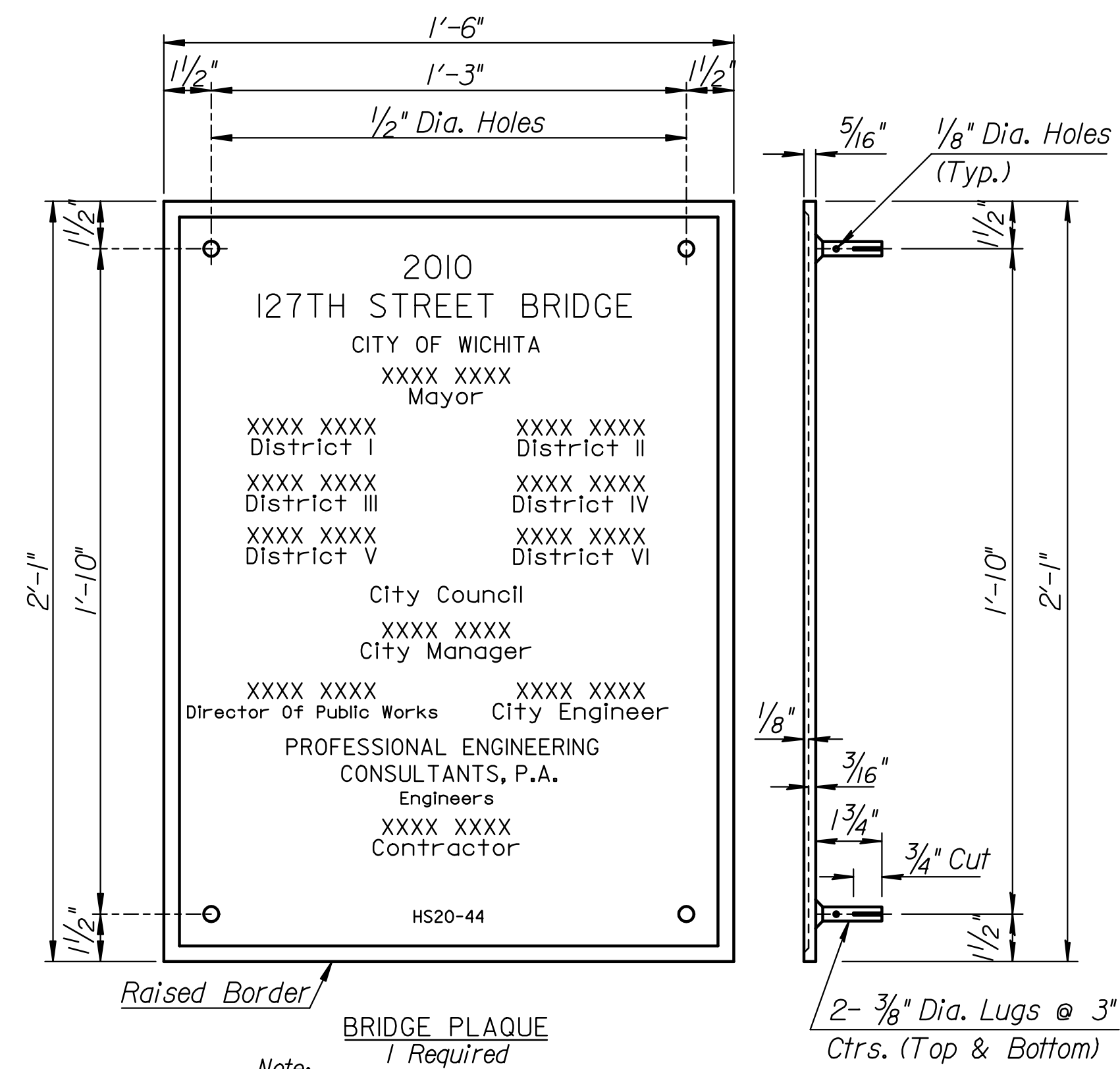


STATE	PROJECT NO.	YEAR	SHEET NO.	TOTAL SHEETS
KANSAS	87 N-0514-01	2010	52	148

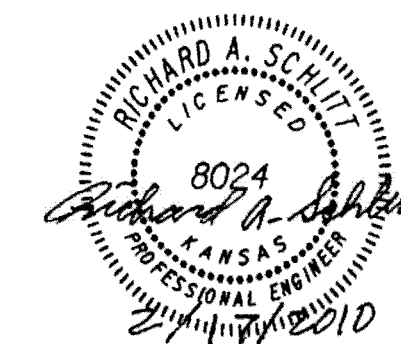


BRIDGE NUMBER PLATE PLACEMENT DETAIL

BRIDGE PLAQUE
1 Required

Note:
XXXXX Names as directed by City Engineer.
Contractor to furnish rubbing before casting.
One bronze plaque shall be furnished and placed in the handrail post at SE corner of the bridge as shown on the Construction Layout. Plaque shall conform to applicable requirements of sub-section 1625 of the KDOT Standard Specifications. Recess plaque and approve before casting. The furnishing and installation of the plaque shall be paid for as Bridge Plaque (non-participating) Lump Sum. Contractor to furnish rubbing before casting.

Plotted By: rjm
File: I:\2008\08778\Office Check\08778-052-5-12x10-RFB Plaquev8.dgn



No.	Revisions	By	Date
CITY OF WICHITA			
127TH ST.		STA. 5+86.19	
BRIDGE PLAQUE			
127th and Harry St.			
PROJECT NO. 87 N-0514-01		SEDGWICK COUNTY	
Professional Engineering Consultants, P.A.			
303 S. TOPEKA • WICHITA, KANSAS 67202 316-262-2691 • FAX 316-262-3003			
Designed by	R.J.M	Checked by	R.A.S.
Drawn by	R.J.M	Date	Feb. 2010
		Job No.	08778
Sh. No. 52			