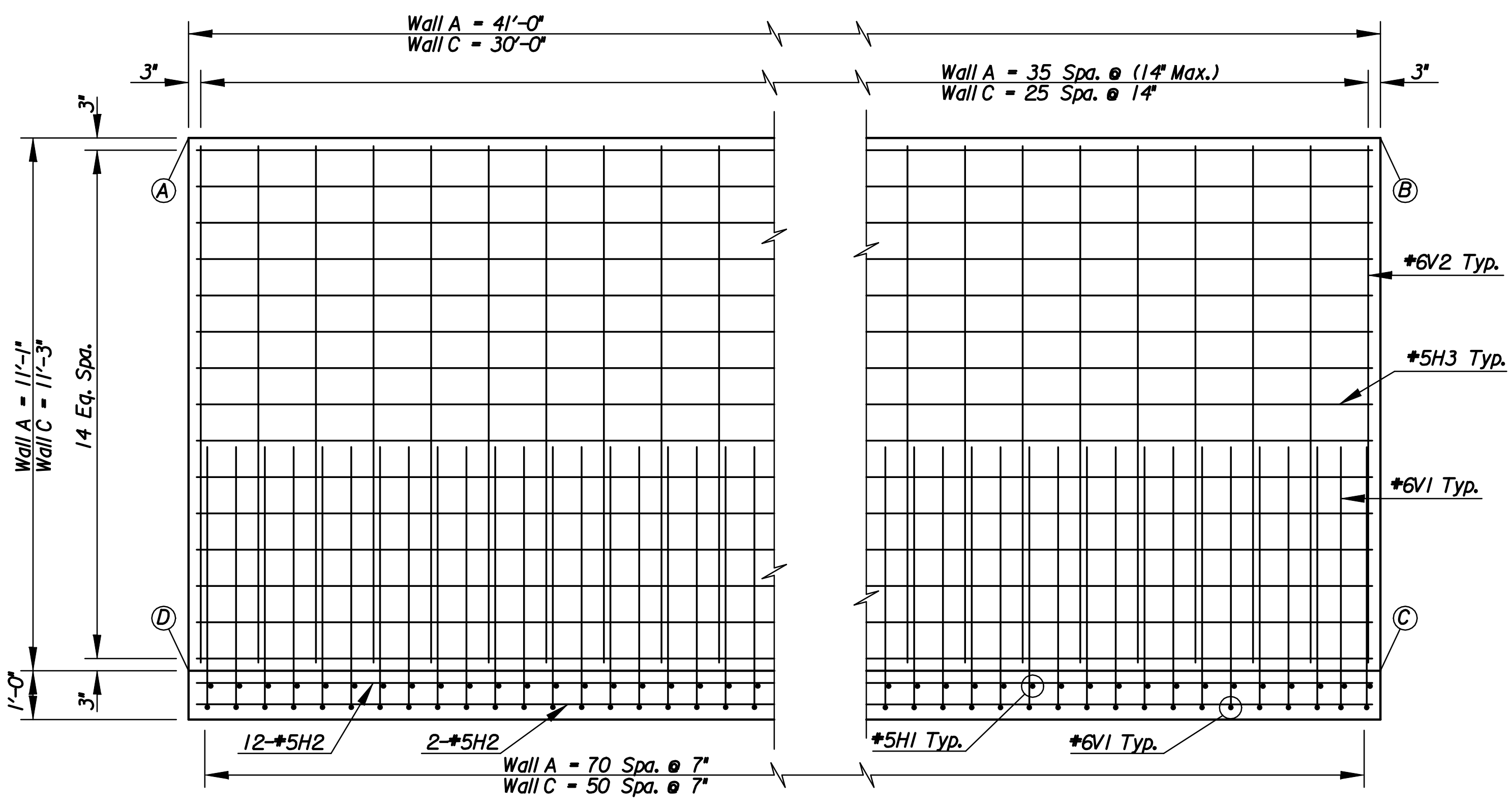


PLAN
Scale: 1" = 8'

Item	Wall A		Wall C	
	Quantity	Unit	Quantity	Unit
Concrete (Grade 4.0)(AE)	30.5	C.Y.	22.4	C.Y.
Reinforcing Steel (Gr. 60) (Epoxy)	3368	Lbs.	2494	Lbs.

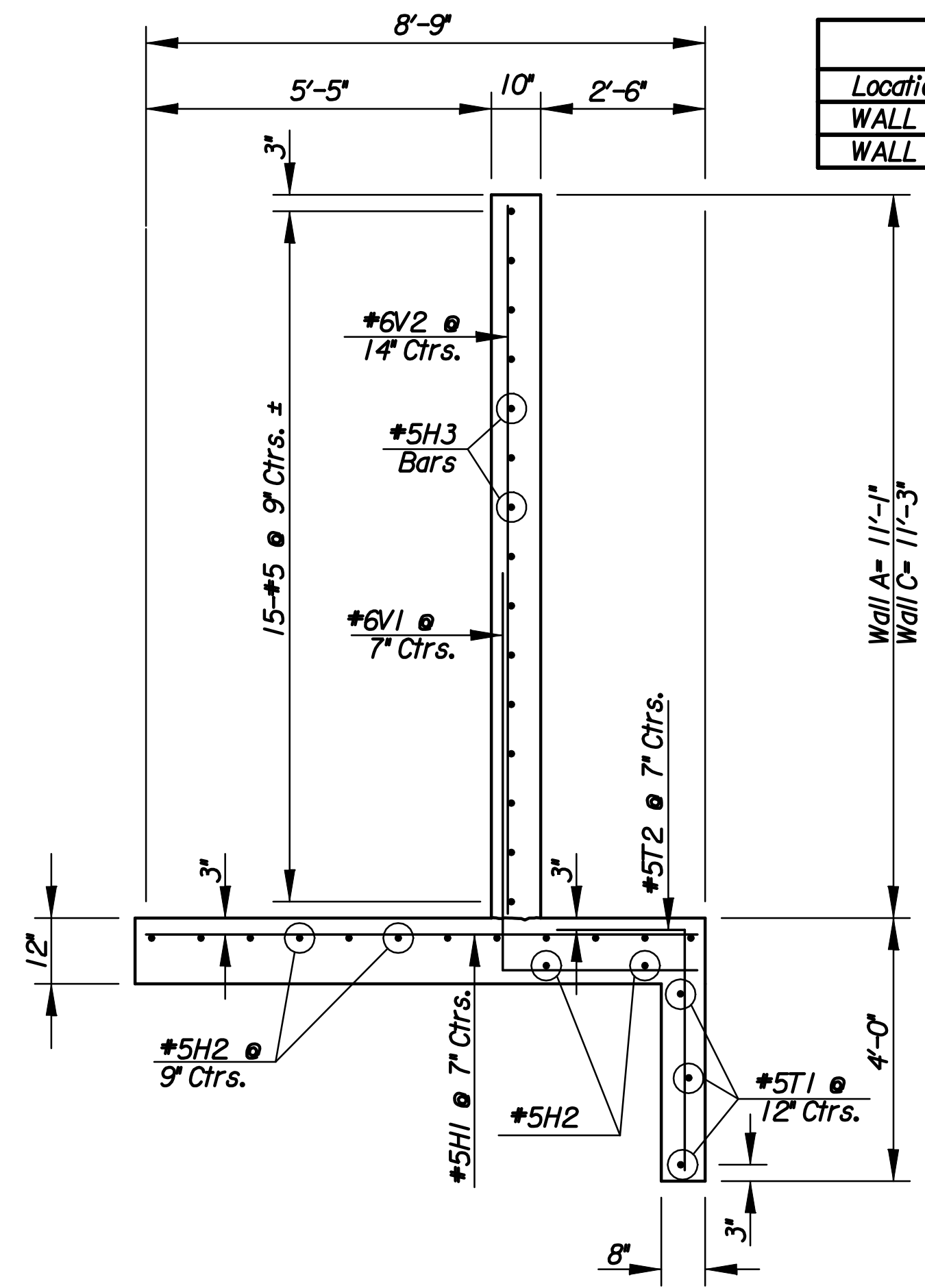
REINFORCING SCHEDULE (BOTH WALLS)							
REINFORCING STEEL							
Wall A				Wall C			
Mark	No.	Size	Length	Mark	No.	Size	Length
H1	71	5	8'-5"	H1	52	5	8'-5"
H2	14	5	40'-8"	H2	14	5	29'-8"
H3	15	5	40'-8"	H3	15	5	29'-8"
T1	3	5	40'-8"	T1	3	5	29'-8"
T2	71	5	5'-11"	T2	52	5	5'-11"
V1	71	6	7'-9"	V1	52	6	7'-9"
V2	36	6	10'-9"	V2	27	6	10'-11"

TABLE OF ELEVATIONS				
Location	Elev. A	Elev. B	Elev. C	Elev. D
WALL A	1315.75	1315.75	1304.70	1304.70
WALL C	1315.75	1315.75	1304.50	1304.50

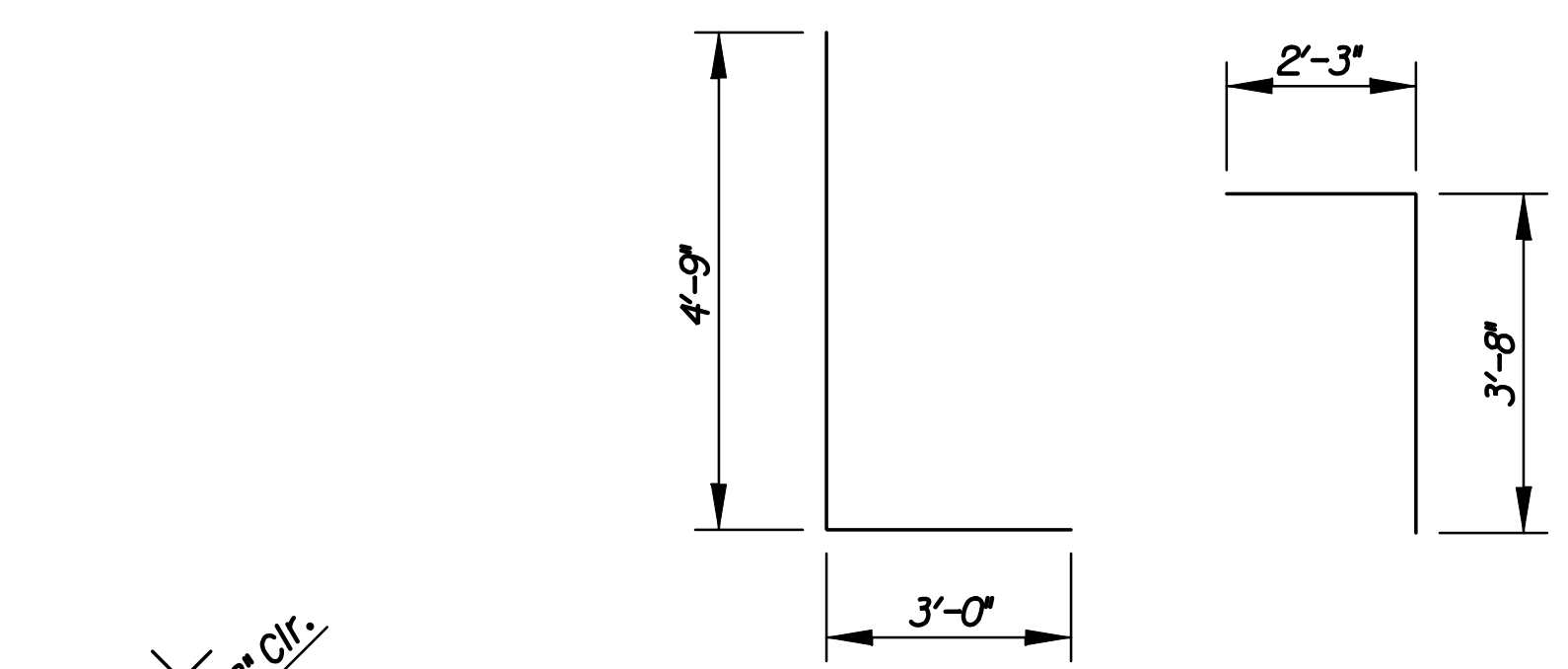


WALLS A & C
Scale: 1" = 2'
(Looking South)
(Along E of Wall)

NOTE: Provide Weepholes as depicted on the RCB Auxiliary Details sheet.

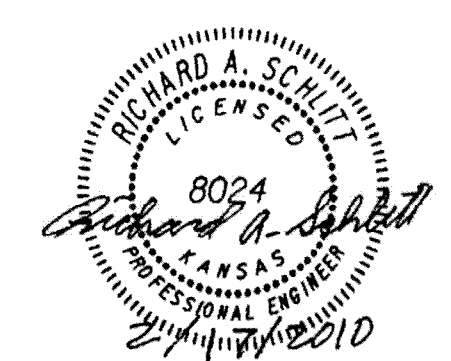


TYPICAL SECTION
Scale: 1" = 2'



BENDING DIAGRAMS
Dimensions are out to out of bars

PIPE DETAILS
Note: See Sheet No. 31 For Placement Details.



No.	Revisions	By	Date

CITY OF WICHITA

RETAINING WALL DETAILS
(WALLS A & C)
127th and Harry St.

PROJECT NO. 87 N-0514-01 SEDGWICK COUNTY

Professional Engineering Consultants, P.A.
303 S. TOPKA • WICHITA, KANSAS 67202
316-262-2691 • FAX 316-262-3003

Designed by	R.J.M	Checked by	R.A.S.
Drawn by	C.P.	Date	Feb. 2010

Job No. 08778
Sh. No. 61

Plotted By: rjm
File: i:\2008\08778\Office Check\08778-061-RetWall(30ft).dgn