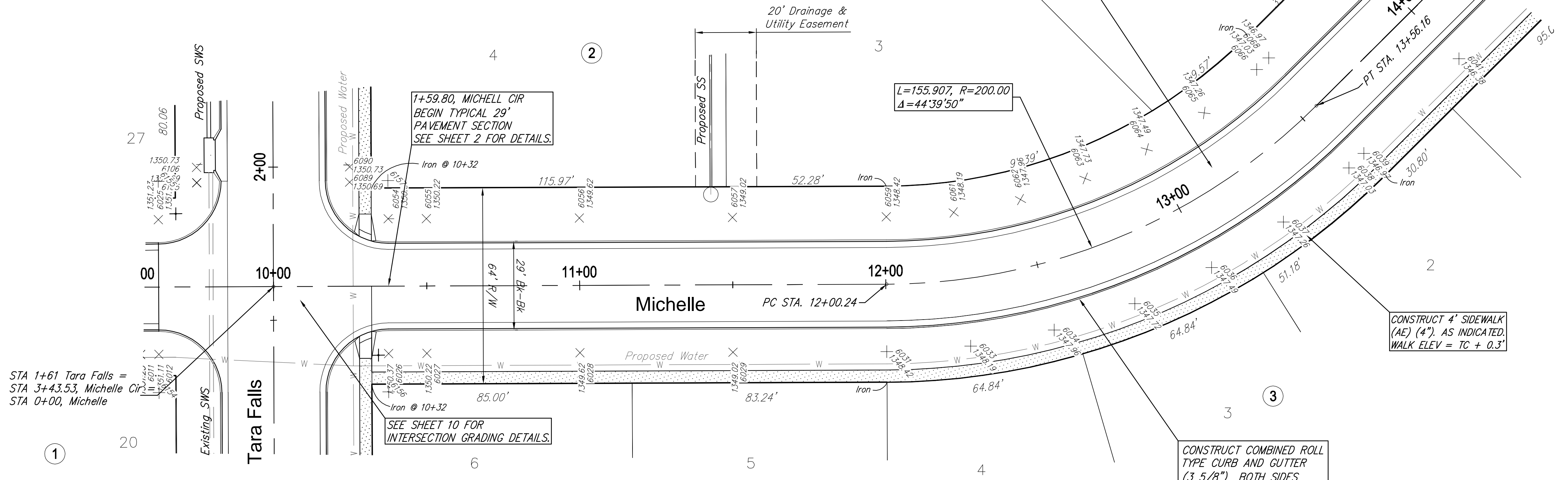
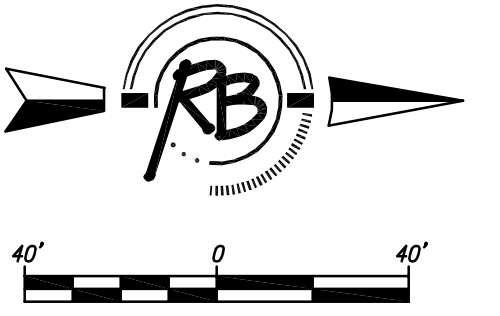


Casa Bella Addition



STA 1+61 Tara Falls =
 STA 3+43.53, Michelle Cir
 STA 0+00, Michelle

1+59.80, MICHELL CIR
 BEGIN TYPICAL 29'
 PAVEMENT SECTION
 SEE SHEET 2 FOR DETAILS.

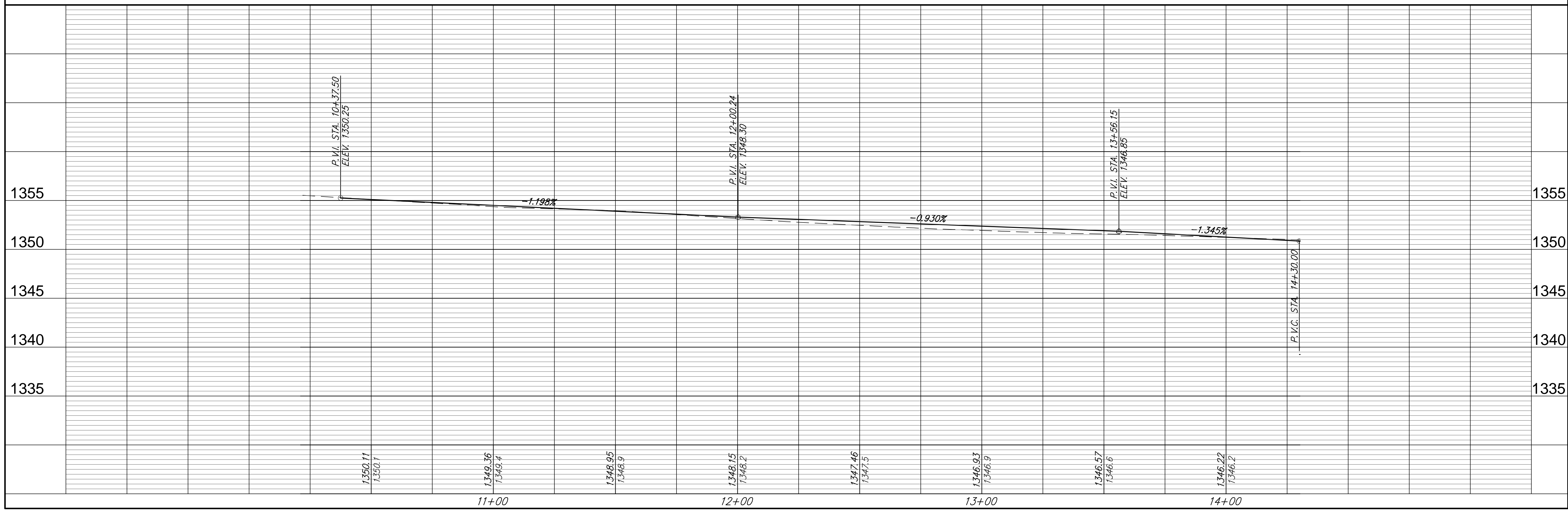
CONSTRUCT 5" ASPHALT
 CONCRETE PAVEMENT W/ 5"
 CRUSHED ROCK BASE

$L=155.907, R=200.00$
 $\Delta=44^{\circ}39'50''$

CONSTRUCT 4' SIDEWALK
 (AE) (4"). AS INDICATED,
 WALK ELEV = TC + 0.3'

CONSTRUCT COMBINED ROLL
 TYPE CURB AND GUTTER
 (3 5/8") BOTH SIDES

SEE SHEET 10 FOR
 INTERSECTION GRADING DETAILS.



Ruggles & Bohm, P.A. Engineering, Surveying, Land Planning 602 Main Street, Suite 200 Wichita, Kansas 67202 Phone: 316-261-0000 Fax: 316-261-0001 www.rugglesandbohm.com	
PROJECT NUMBER 472-84874	DRAWING FILE ENGINEERING BASE (Michelle)
DESIGN KWIL UTILITY	DRAWN RA DATE Mar. 10, 2010
REVISION REVIEW	REVIEW
CASA BELLA PH. 2 PAVING MICHELLE WICHITA KANSAS	
RB JOB 3564T	SHEET 6 OF 34