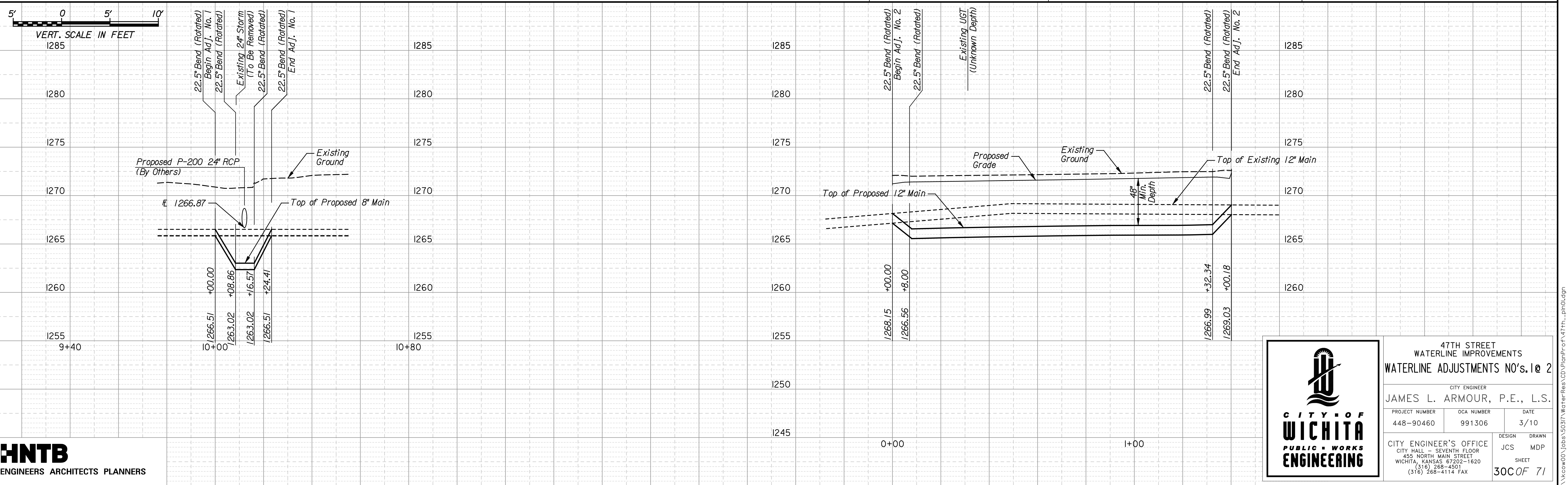


Note:
All Pipes On This Sheet Shall Be Cleaned And Swabbed. Pipe Shall Be Chlorinated And Temporarily Flushed Along With Cleaning And Swabbing.

B.M. #80 \approx cut on center headwall +/- 100' E. of ℓ Ellis S. side of 47th 15' S. of Sidewalk
Sta. 2069+06.05, 46.29' Rt., ℓ 47th, Elev. 1273.01 (NAVD 88)

B.M. #59 Mag nail & washer set in concrete entrance pavement to 1401 E 47th on S. side of 47th \pm 85' E of ℓ Lulu
Sta. 2065+76.01, 33.60' Rt., ℓ 47th, Elev. 1272.07 (NAVD 88)



47TH STREET WATERLINE IMPROVEMENTS WATERLINE ADJUSTMENTS NO'S. 1 & 2		
CITY ENGINEER		
JAMES L. ARMOUR, P.E., L.S.		
PROJECT NUMBER	OCA NUMBER	DATE
448-90460	991306	3/10
CITY ENGINEER'S OFFICE CITY HALL - SEVENTH FLOOR 455 NORTH MAIN STREET WICHITA, KANSAS 67202-1620 (316) 268-4501 (316) 268-4114 FAX		DESIGN DRAWN JCS MDP SHEET 30C OF 71

Plotted on: Thursday, March 11, 2010 4:17
mpc11fs
Plot Output: \\caw00\mcp\B\FPS
Plot Scale: 1/8"=1'-0"
Design Filename: \\caw00\jobs\50317\WaterRes\CD\PlanProf\47th...p10.dgn

\\caw00\jobs\50317\WaterRes\CD\PlanProf\47th...p10.dgn