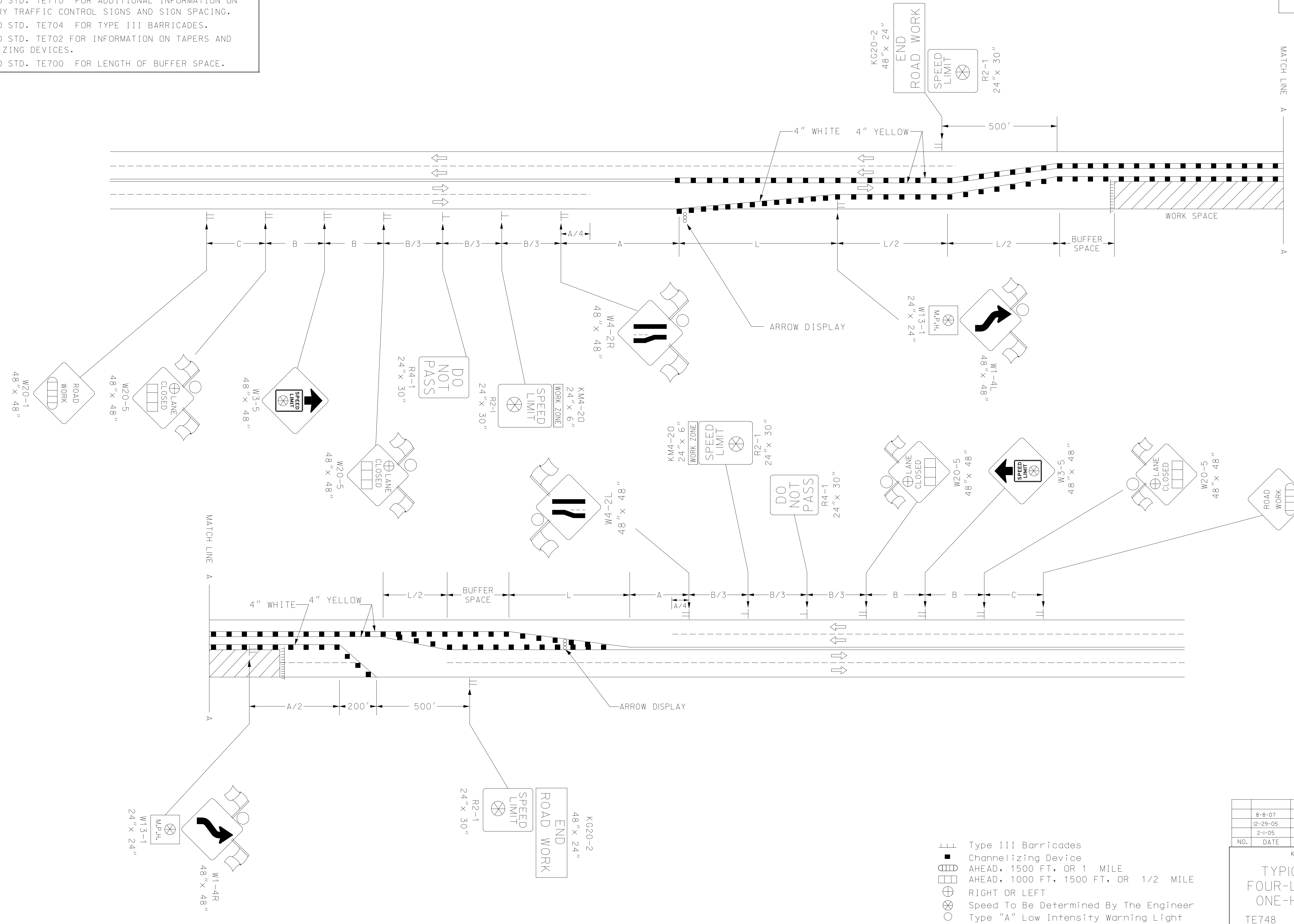


REFER TO STD. TE710 FOR ADDITIONAL INFORMATION ON TEMPORARY TRAFFIC CONTROL SIGNS AND SIGN SPACING.  
 REFER TO STD. TE704 FOR TYPE III BARRICADES.  
 REFER TO STD. TE702 FOR INFORMATION ON TAPERS AND CHANNELIZING DEVICES.  
 REFER TO STD. TE700 FOR LENGTH OF BUFFER SPACE.



- ▬ Type III Barricades
- ▬ Channelizing Device
- ▬ AHEAD, 1500 FT, OR 1 MILE
- ▬ AHEAD, 1000 FT, 1500 FT, OR 1/2 MILE
- ⊕ RIGHT OR LEFT
- ⊗ Speed To Be Determined By The Engineer
- Type "A" Low Intensity Warning Light

KANSAS DEPARTMENT OF TRANSPORTATION				
TYPICAL TRAFFIC CONTROL				
FOUR-LANE UNDIVIDED HIGHWAY				
ONE-HALF ROADWAY CLOSED				
TE748				
9/1/00				
FHWA APPROVAL	8-8-07	APP'D.	Anthony A. Alrobalre	
DESIGNED	B.A.H.	DETAILED	B.A.H.	QUANTITIES
DESIGN CK.	DETAIL CK.	QUAN. CK.	TRACE	CK.

Plotted on: Friday February 26, 2010 9:09  
 kschomaker Plot Queue: \\CBSM\00\K0088933-PS  
 Plot1 Scale: 0.053334d Pen Table: 5037\_half.pen  
 Design Filename: \\kcow00\jobs\5037\Roadway\CD\TrafficControl\te748.dgn