

CONSTRUCTION PLANS FOR WATER DISTRIBUTION SYSTEM IMPROVEMENTS TO SERVE LOT 10 BLOCK 1 FRUITVALE PARK ADDITION IN THE CITY OF WICHITA SEDGWICK COUNTY, KANSAS MICHAEL E. LINDEBAK, P.E. - CITY ENGINEER

GENERAL NOTES

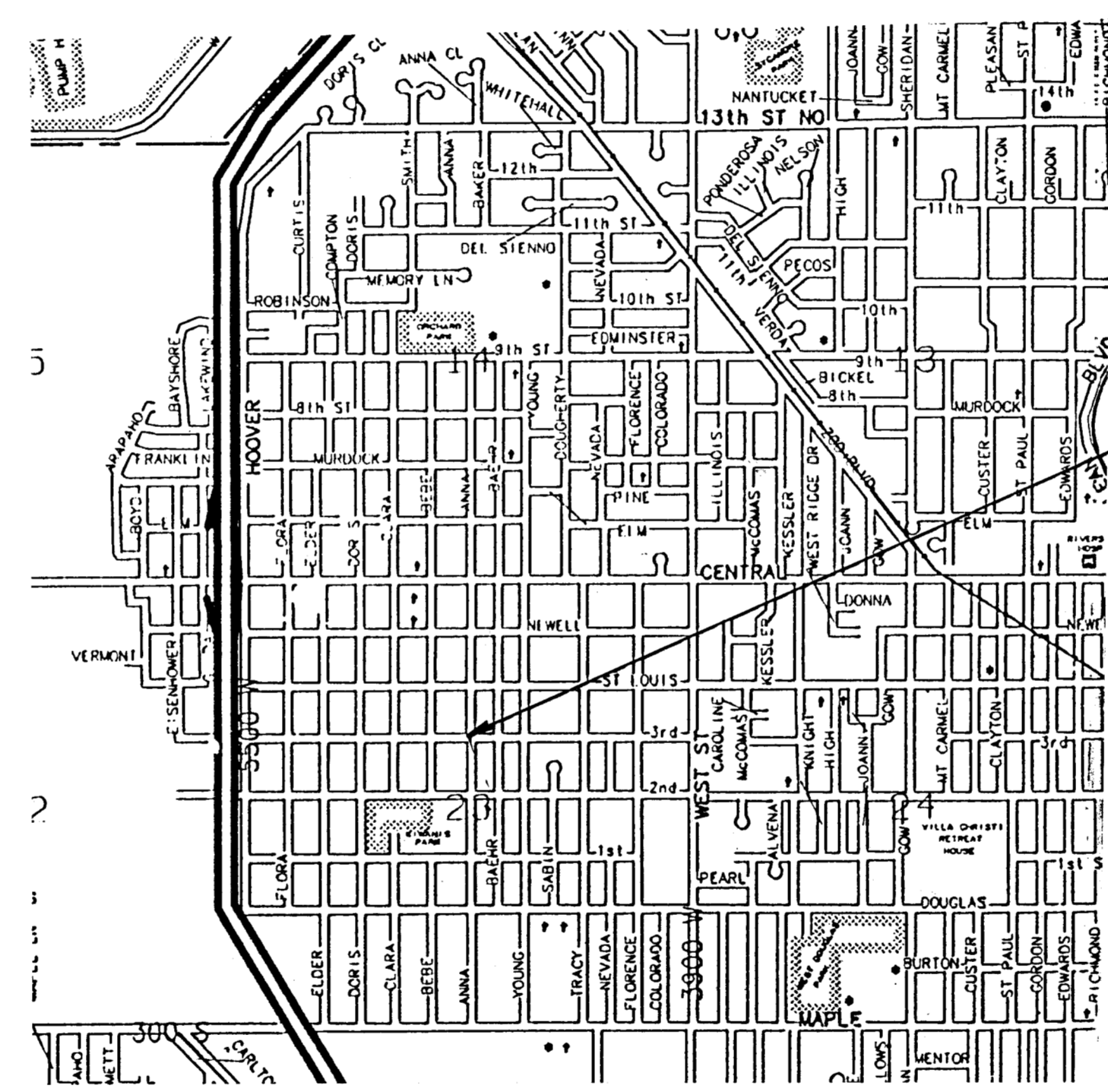
1. CONTRACTOR WILL BE REQUIRED TO PROVIDE A MINIMUM ADVANCE NOTICE OF TWENTY-FOUR (24) HOURS TO UTILITY COMPANIES PRIOR TO STARTING ANY EXCAVATION AS FOLLOWS:

KANSAS ONE-CALL	1-800-344-7233
-----------------	----------------

THE CONTRACTOR MUST NOTIFY THE FOLLOWING IN CASE OF EMERGENCY:

CABLEVISION	262-4270 or 263-2061
XPL GAS SERVICE COMPANY	263-7511
KANSAS GAS & ELECTRIC	264-1141
ARKLA GAS COMPANY	942-8350 or 263-8161
SOUTHWEST BELL TELEPHONE COMPANY	1-571-2611
CITY OF WICHITA WATER DEPARTMENT	268-4908
CITY OF WICHITA SEWER MAINTENANCE	268-4071
2. ALL WATER MAINS AND APPURTENANCES SHALL BE INSTALLED IN ACCORDANCE WITH CITY OF WICHITA, KANSAS, STANDARD SPECIFICATIONS FOR WATER MAIN INSTALLATIONS NO. 14533.
3. THE WATER MAIN SHALL BE CONSTRUCTED ON THE ALIGNMENT SHOWN BY THE PLANS. THE COST FOR ANY NECESSARY TREE TRIMMING, CLEARING AND/OR GRUBBING SHALL BE INCLUDED IN THE PRICE BID FOR THE INSTALLED WATER MAIN PIPE.

TREES AND SHRUBS IN PUBLIC RIGHT-OF-WAY WHICH ARE IN DIRECT CONFLICT WITH PROPOSED NEW CONSTRUCTION SHALL BE REMOVED BY THE CONTRACTOR WITH THE ENGINEER'S APPROVAL, AND SHALL BE INCLUDED IN THE PRICE BID FOR THE INSTALLED WATER PIPE. TREES AND SHRUBS WHICH ARE NOT IN DIRECT CONFLICT WITH PROPOSED NEW CONSTRUCTION SHALL BE SAVED AND PROTECTED FROM DAMAGE.
4. OPENING AND CLOSING WATER VALVES SHALL BE DONE SLOWLY TO PREVENT DAMAGE TO THE WATER DISTRIBUTION SYSTEM FROM WATER HAMMER. ALL VALVES CLOSED BY THE CONTRACTOR MUST BE REOPENED AS NEW CONSTRUCTION PERMITS. PROJECT INSPECTOR MUST ASCERTAIN THAT ANY VALVE CLOSED BY THE CONTRACTOR IS REOPENED. CONTRACTOR WILL BE PERMITTED TO OPERATE WATER VALVES ONLY WHEN THE PROJECT INSPECTOR ASSIGNED TO THE PROJECT IS PRESENT.
5. CONTRACTOR SHALL NOT START WORK ON THE PROJECT UNTIL THE PROJECT INSPECTOR IS ASSIGNED TO THE PROJECT AND IS PRESENT ON THE SITE. ANY WORK DONE WITHOUT INSPECTION WILL BE REQUIRED TO BE UNCOVERED FOR INSPECTION.
6. UNDERGROUND UTILITY SERVICE LINES AND OVERHEAD UTILITY POLE LINES ARE TO BE ADJUSTED AS NECESSARY BY OTHERS PRIOR TO CONSTRUCTION UNLESS THE PLANS SPECIFICALLY CALL FOR THEIR ADJUSTMENT BY THE CONTRACTOR. EXISTING UTILITIES AND THEIR LOCATION, AS SHOWN ON THE PLANS, REPRESENT THE BEST INFORMATION OBTAINABLE FOR DESIGN. LOCATION INFORMATION HAS BEEN OBTAINED FROM THE VARIOUS UTILITY COMPANIES AND IS EITHER FROM COMPANY RECORD DRAWINGS OR COMPANY PROVIDED FIELD LOCATIONS. THE CONTRACTOR WILL BE REQUIRED TO WORK AROUND EXISTING UTILITIES WITHIN THE RIGHT-OF-WAY WHICH DO NOT CONFLICT WITH PROPOSED CONSTRUCTION.
7. RUBBLE FROM THE REMOVAL OF MISCELLANEOUS STRUCTURES AND EXCESS EXCAVATION WHICH IS TO BE WASTED SHALL BE DISPOSED OF ON SITES TO BE PROVIDED BY THE CONTRACTOR. THESE SITES SHALL BE APPROVED BY THE ENGINEER AS TO SUITABILITY, APPEARANCE AND SITE LOCATION. LOCATIONS THAT, IN THE OPINION OF THE ENGINEER, WILL LEAVE AN UNSIGHTLY APPEARANCE WILL NOT BE APPROVED.
8. THE CONTRACTOR SHALL BE RESPONSIBLE FOR PRESERVING PROPERTY IRONS. THE CONTRACTOR WILL BE REQUIRED TO RE-ESTABLISH ANY PROPERTY IRONS WHICH ARE DAMAGED OR DESTROYED BY HIS CONSTRUCTION OPERATIONS. SUCH IRONS SHALL BE RE-ESTABLISHED BY A LICENSED LAND SURVEYOR IN ACCORDANCE WITH STATE LAWS AT THE EXPENSE OF THE CONTRACTOR AND NOT AS AN EXPENSE ON THE PROJECT.
9. TRAFFIC WILL NOT BE AFFECTED.



LOCATION MAP

OCTOBER, 1991

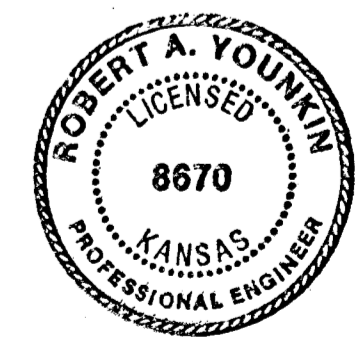
PLANS PREPARED BY

PUBLIC WORKS / ENGINEERING

WICHITA, KANSAS

PROJECT NUMBER 448-88524

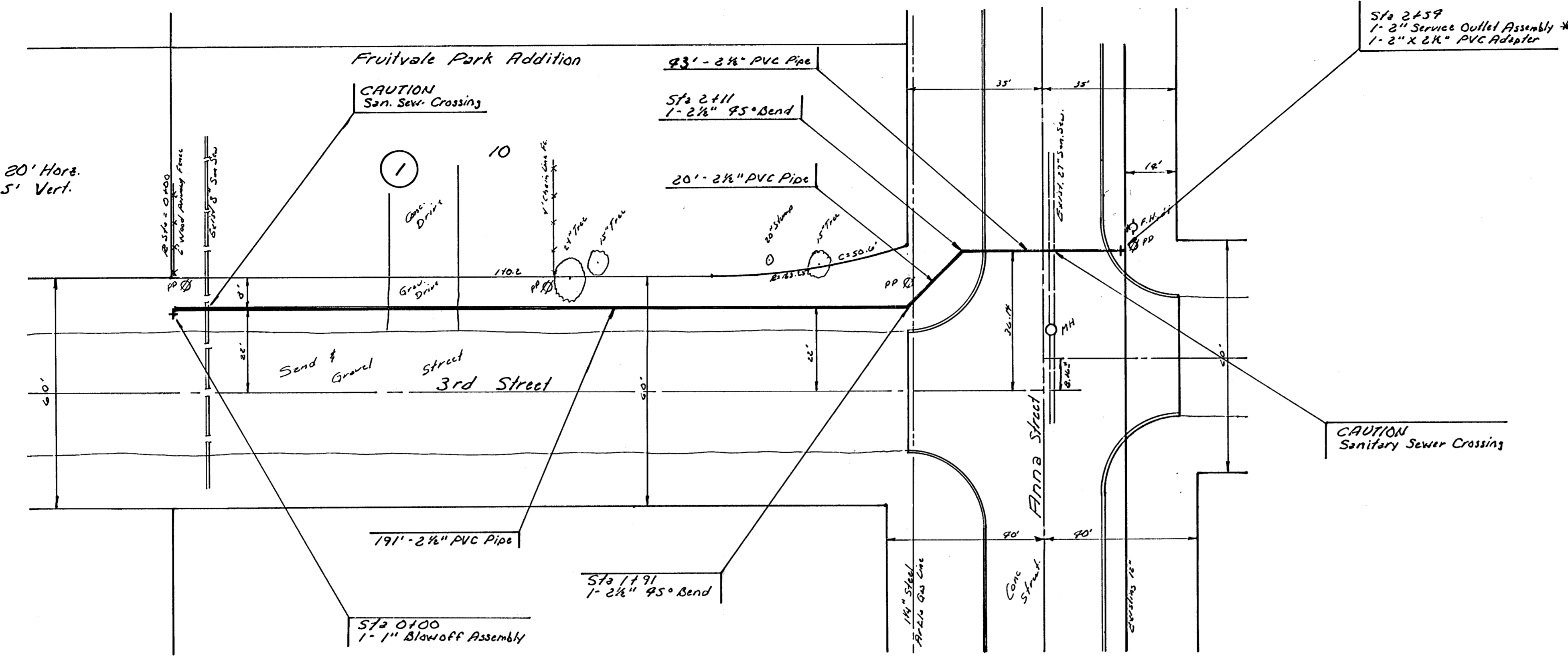
INDEX CODE 730945



PROJECT DESCRIPTION
PROJECT NUMBER

DATE	
BY	
REVISION	
NO.	
DATE	
BY	
REVISION	
NO.	

Scale: 1" = 20' Horz.
1" = 5' Vert.



Note: Other underground utilities may be within project limits. Contractor shall contact Kansas-One-Call for field locations. Water line alignment may be adjusted in the event of utility conflict with Construction Engineer's approval.

* The 2" Service Outlet Assembly shall be furnished and set by the Wichita Water Dept. The Contractor shall contact Mr. Bruce Clock to arrange for such installation.

Improvement District: Lot 10, Block 1, Fruitvale Park Addition

The 45° Bends to be used on this project shall be PVC Fittings.

The crossing of Anna at 3rd St. shall be done by pushing the 2 1/2" PVC Pipe under the existing pavement. Pavement removal and replacement for the installation may be done at the option of the Contractor, however, such removal and replacement shall not be paid for separately and shall be considered an expense to the Contractor.

Bench Mark: City Standard Disk 92ft. West and 39ft. North of E both 2nd St and Anna Street. Elev. 119.67

DATE	
BY	
REVISION	
NO.	
DATE	
BY	
REVISION	
NO.	

