

CITY OF WICHITA, KANSAS

WATER SYSTEM IMPROVEMENTS

INDEX:

SHEET 1	TITLE SHEET
SHEET 2	STANDARD WATER ASSEMBLY DETAIL SHEET
SHEET 3-7	PLAN-PROFILE SHEETS

CENTRAL AVENUE, 119TH STREET WEST TO WHEATLAND

PROJECT NO.: 448-88775

INDEX CODE: 630293

GENERAL NOTES:

1. CONTRACTOR WILL BE REQUIRED TO PROVIDE A MINIMUM ADVANCE NOTICE OF TWENTY-FOUR (24) HOURS TO UTILITY COMPANIES PRIOR TO STARTING ANY EXCAVATION AS FOLLOWS:

KANSAS GAS & ELECTRIC	316-261-6421
K.P.L. GAS SERVICE	316-942-8350
SOUTHWESTERN BELL TELEPHONE CO.	316-383-0454
WICHITA WATER DEPARTMENT	316-269-4553
MULTIMEDIA CABLEVISION	316-262-4270
WICHITA SEWER MAINTENANCE	316-269-4210
KANSAS ONE-CALL	1-687-2470

2. ALL WATER MAINS AND APPURTENANCES SHALL BE INSTALLED IN ACCORDANCE WITH CITY OF WICHITA, KANSAS STANDARD SPECIFICATIONS FOR WATER MAIN INSTALLATION NO. 14533.

3. THE WATER MAIN SHALL BE CONSTRUCTED ON THE ALIGNMENT SHOWN BY THE PLANS. TREES AND SHRUBS IN PUBLIC RIGHT-OF-WAY WHICH ARE IN DIRECT CONFLICT WITH PROPOSED NEW CONSTRUCTION SHALL BE REMOVED BY THE CONTRACTOR WITH ENGINEER'S APPROVAL. TREES AND SHRUBS WHICH ARE NOT IN DIRECT CONFLICT WITH PROPOSED NEW CONSTRUCTION SHALL BE SAVED AND PROTECTED FROM DAMAGE. THE COST FOR ANY NECESSARY TREE TRIMMING, CLEARING AND/OR GRUBBING SHALL BE INCLUDED IN THE PRICE BID FOR INSTALLED WATER MAIN PIPE.

4. OPENING AND CLOSING WATER VALVES SHALL BE DONE SLOWLY TO PREVENT DAMAGE TO THE WATER DISTRIBUTION SYSTEM FROM WATER HAMMER. ALL VALVES CLOSED BY THE CONTRACTOR MUST BE REOPENED AS NEW CONSTRUCTION PERMITS. PROJECT INSPECTOR MUST ASCERTAIN THAT ANY VALVE CLOSED BY THE CONTRACTOR IS REOPENED. CONTRACTOR WILL BE PERMITTED TO OPERATE WATER VALVES ONLY WHEN THE PROJECT INSPECTOR ASSIGNED TO THE PROJECT IS PRESENT.

5. CONTRACTOR SHALL NOT START WORK ON THE PROJECT UNTIL THE PROJECT INSPECTOR IS ASSIGNED TO THE PROJECT AND IS PRESENT ON THE SITE. ANY WORK DONE WITHOUT INSPECTION WILL BE REQUIRED TO BE UNCOVERED FOR INSPECTION.

6. EXISTING UTILITIES AND THEIR LOCATIONS, AS SHOWN ON THE PLANS, REPRESENT THE BEST INFORMATION OBTAINABLE FOR DESIGN. LOCATION INFORMATION HAS BEEN OBTAINED FROM THE VARIOUS UTILITY COMPANIES AND IS EITHER FROM COMPANY RECORD DRAWINGS OR COMPANY PROVIDED FIELD LOCATIONS. THE CONTRACTOR WILL BE REQUIRED TO WORK AROUND EXISTING UTILITIES WITHIN THE RIGHT-OF-WAY WHICH DO NOT CONFLICT WITH PROPOSED CONSTRUCTION.

7. RUBBLE FROM THE REMOVAL OF MISCELLANEOUS STRUCTURES AND EXCESS EXCAVATION WHICH IS TO BE WASTED SHALL BE DISPOSED OF ON SITES TO BE PROVIDED BY THE CONTRACTOR. THESE SITES SHALL BE APPROVED BY THE ENGINEER AS TO SUITABILITY, APPEARANCE AND SITE LOCATION. LOCATIONS THAT, IN THE OPINION OF THE ENGINEER, WILL LEAVE UNSIGHTLY APPEARANCE WILL NOT BE APPROVED.

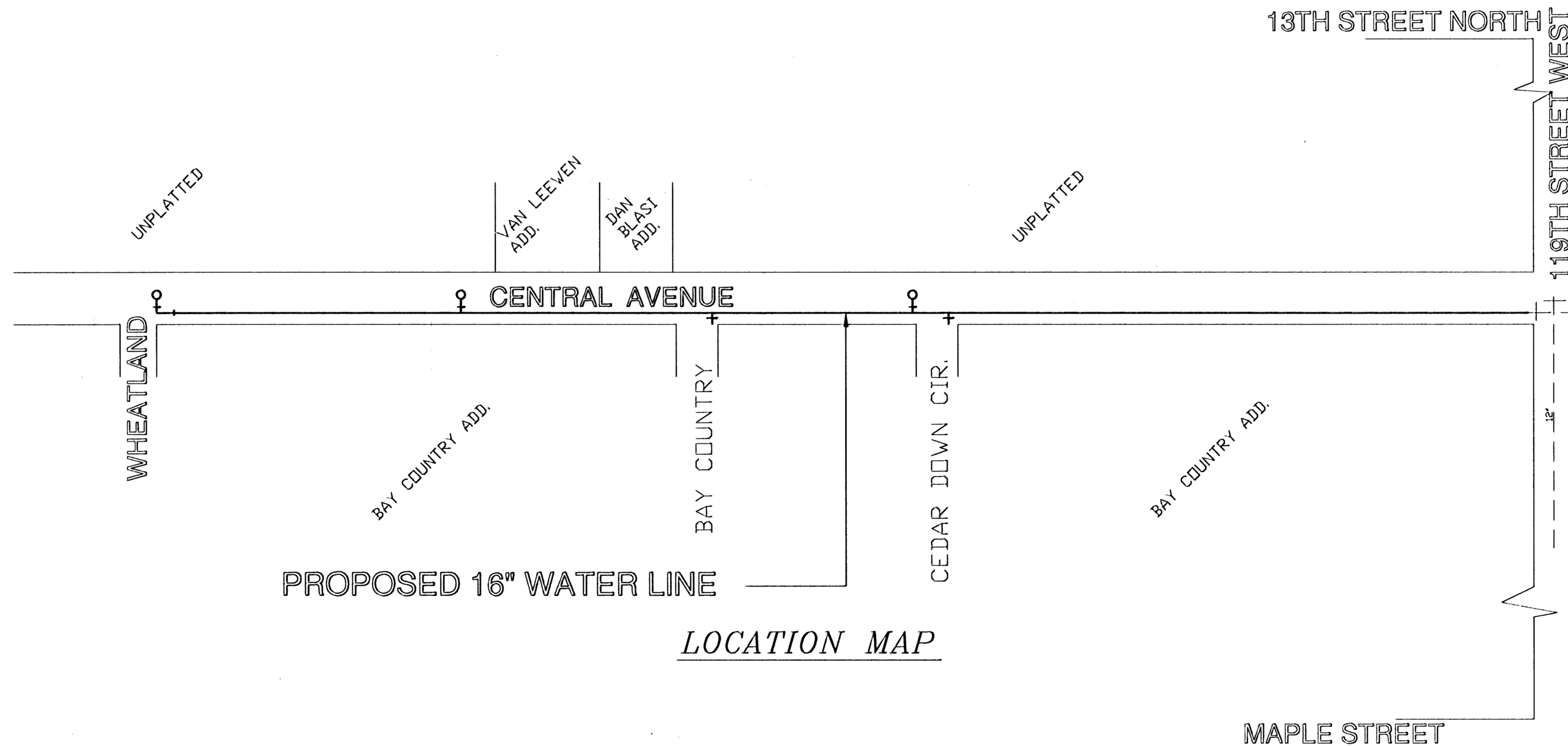
8. THE CONTRACTOR SHALL BE RESPONSIBLE FOR PRESERVING PROPERTY IRONS. THE CONTRACTOR WILL BE REQUIRED TO RE-ESTABLISH ANY PROPERTY IRONS WHICH ARE DAMAGED OR DESTROYED BY HIS CONSTRUCTION OPERATIONS. SUCH IRONS SHALL BE RE-ESTABLISHED BY A LICENSED LAND SURVEYOR OR LICENSED PROFESSIONAL ENGINEER IN ACCORDANCE WITH STATE LAW.

9. GRASS AREAS DISTURBED BY CONSTRUCTION OR STORAGE OF MATERIALS SHALL BE REPLANTED EITHER BY SEEDING OR SODDING WITH THE SAME TYPE OF GRASS AS WAS EXISTING PRIOR TO WATER LINE CONSTRUCTION. SEE SPECIAL PROVISIONS IN THE STANDARD SPECIFICATION NO. 14533 FOR SEEDING AND SODDING OF COOL SEASON AND WARM SEASON GRASSES.

10. THE CONTRACTOR SHALL GIVE ALL PROPERTY OWNERS AND/OR TENANTS OF DEVELOPED PROPERTY DIRECTLY ADJUTING THE CONSTRUCTION OF THIS PROJECT A MINIMUM OF TEN (10) DAYS ADVANCE NOTICE PRIOR TO START OF CONSTRUCTION.

11. TOP OF EXISTING WATER LINE ELEVATIONS ARE TAKEN FROM CITY RECORDS. CONTRACTOR SHALL UNCOVER THE EXISTING WATER LINE IN ORDER TO ASCERTAIN THIS ELEVATION PRIOR TO BEGINNING CONSTRUCTION. ADJUSTMENTS IN PROFILE GRADE MAY HAVE TO BE MADE IF TOP OF EXISTING WATER LINE ELEVATION IS DIFFERENT THAN SHOWN.

12. INTERURBAN TRAFFIC GENERATED OUTSIDE THE PROJECT AREA AND LOCAL BUSINESS OR RESIDENTIAL TRAFFIC GENERATED WITHIN THE PROJECT AREA ARE TO BE CARRIED THROUGH CONSTRUCTION AS FURTHER PROMULGATED BY PROJECT SPECIAL PROVISIONS.



BENCH MARKS:

PROJECT CONTROL:
CITY OF WICHITA DISK, 40' SOUTH & 46' EAST OF CENTERLINES OF CENTRAL AND 119TH STREET WEST
ELEV. = 156.93

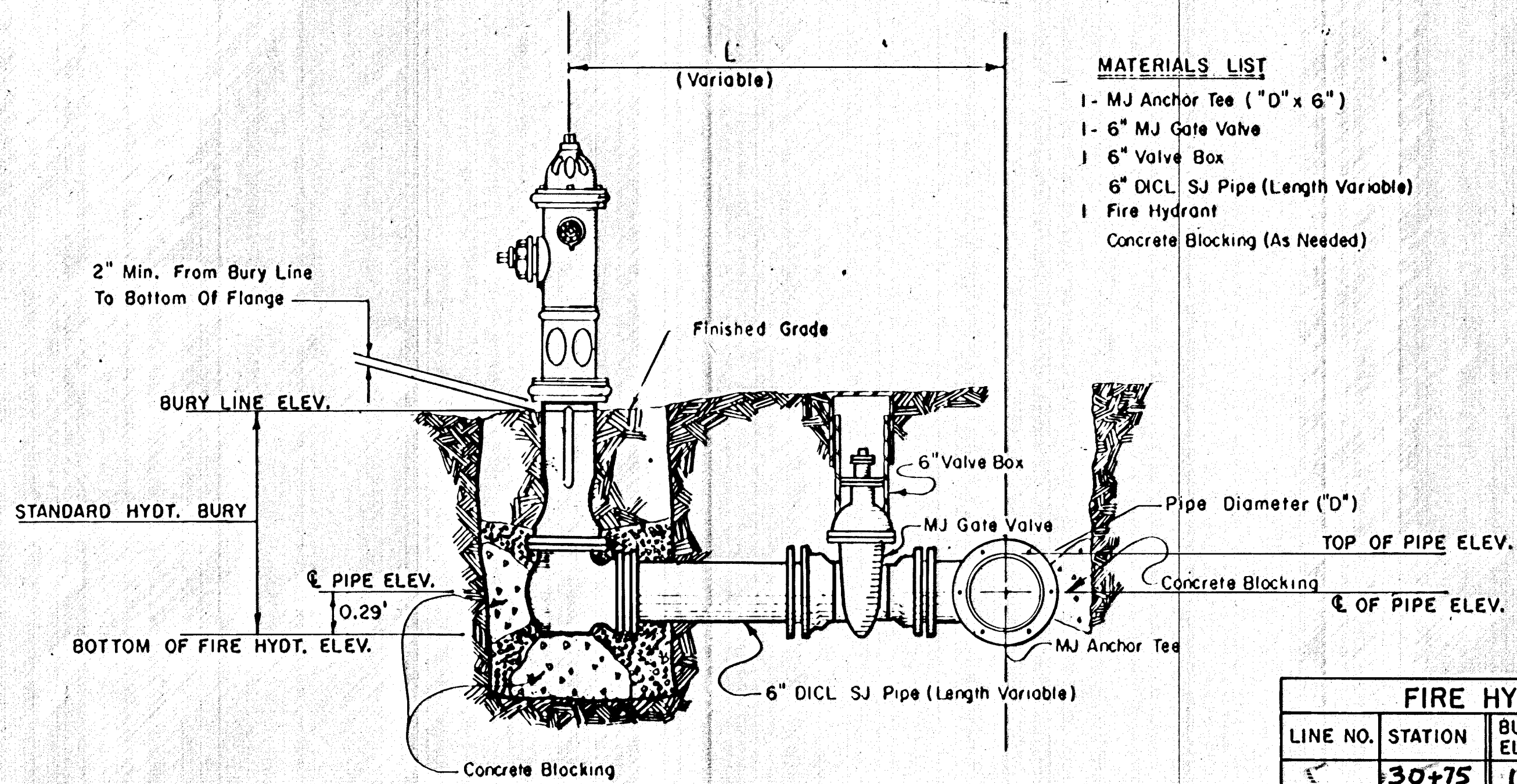
BENCH MARK NO. 1: 40d STEP SPIKE IN SOUTH FACE OF POWER POLE #
STA. 42+82.48' RT.
ELEV. = 158.25

BENCH MARK NO. 2: 40d STEP SPIKE IN SOUTH FACE OF POWER POLE #
STA. 34+01.48' RT.
ELEV. = 154.99

BENCH MARK NO. 3: 40d STEP SPIKE IN SOUTH FACE OF POWER POLE #
STA. 24+02.48' RT.
ELEV. = 155.26

MICHAEL E. LINDEBAK, P.E., CITY ENGINEER

TITLE SHEET		
SCALE:	APPROVED:	DRAWN BY: F.A.
DATE:		CHECKED: B.K.
PROJECT NO:		SHEET NO.: 1 OF 7
MUNICIPAL ENGINEERS 264-LAURA, SUITE 201 WICHITA, KANSAS 67211 316-262-3842		

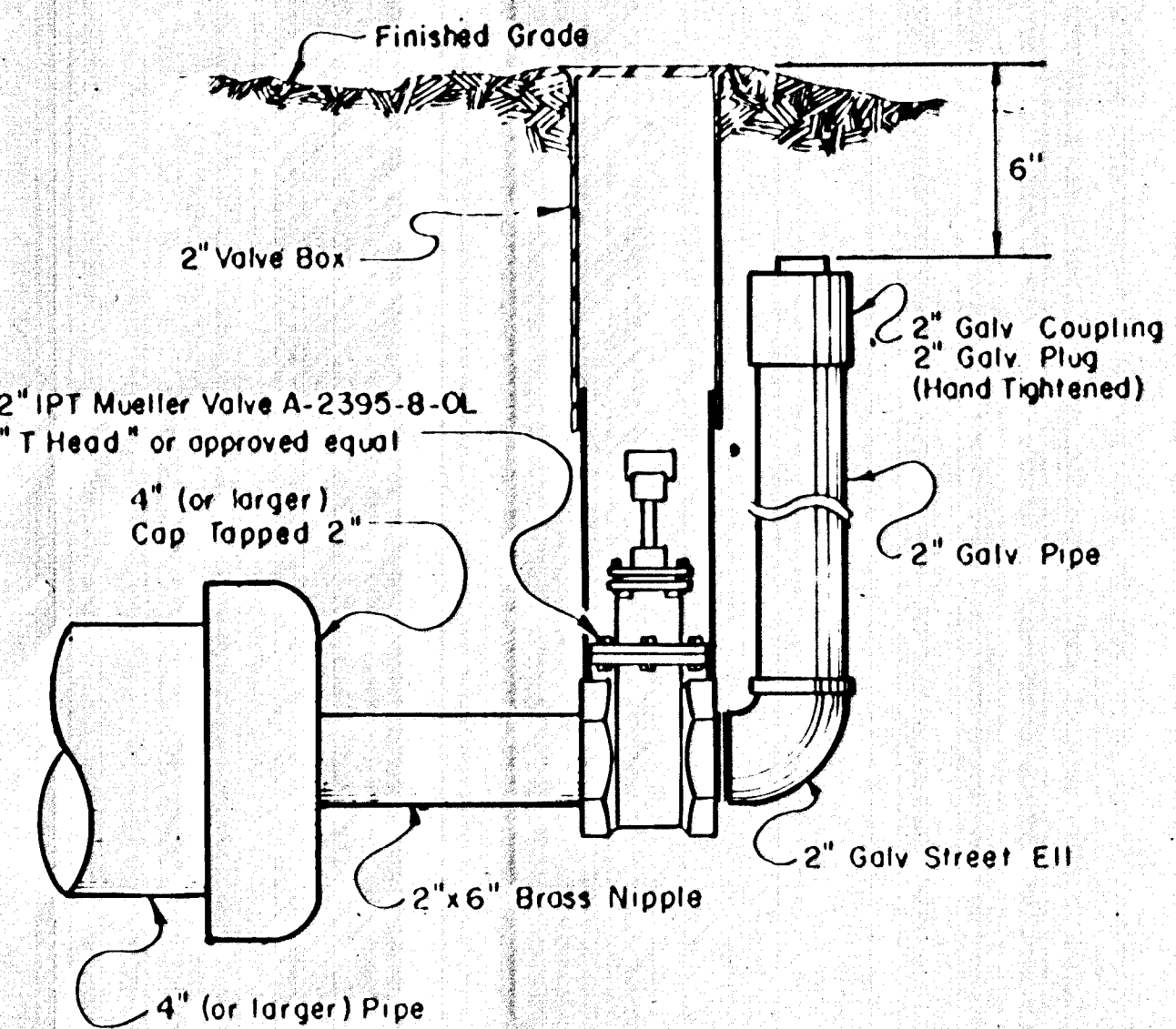


- MATERIALS LIST**
- 1 - MJ Anchor Tee ("D" x 6")
 - 1 - 6" MJ Gate Valve
 - 1 - 6" Valve Box
 - 6" DICL SJ Pipe (Length Variable)
 - 1 Fire Hydrant
 - Concrete Blocking (As Needed)

FIRE HYDRANT ASSEMBLY

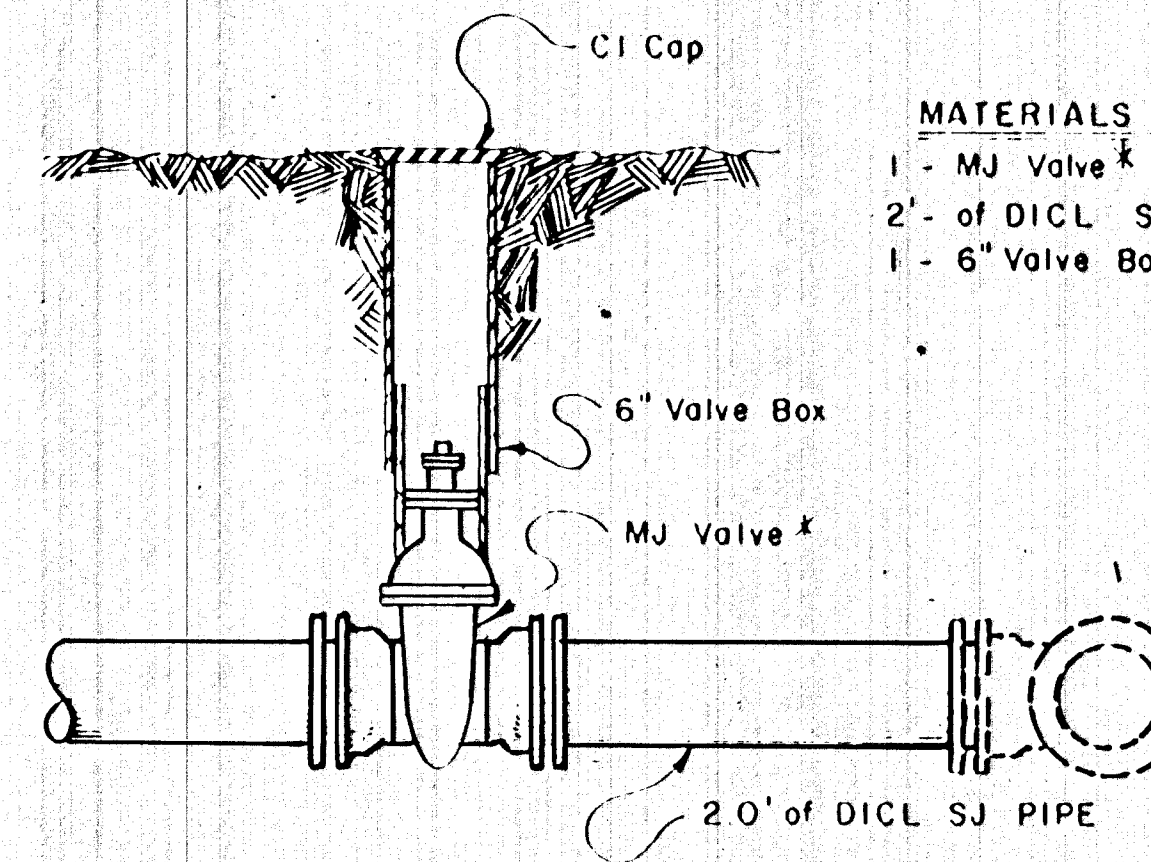
FIRE HYDRANTS REQUIRED				
LINE NO.	STATION	BURY LINE ELEVATION	TOP OF PIPE ELEVATION	FIRE HYDRANT BURY REQUIRED
	30+75	154.96	150.17	5'-6"*
	38+60.0	155.16	149.17	7'-0"*
	24+03.4	154.70	149.70	6'-0"*

* CONTRACTOR SHALL USE STANDARD 5' BURY FIRE HYDRANT AND HYDRANT EXTENSION AS NECESSARY.



2" BLOWOFF ASSEMBLY

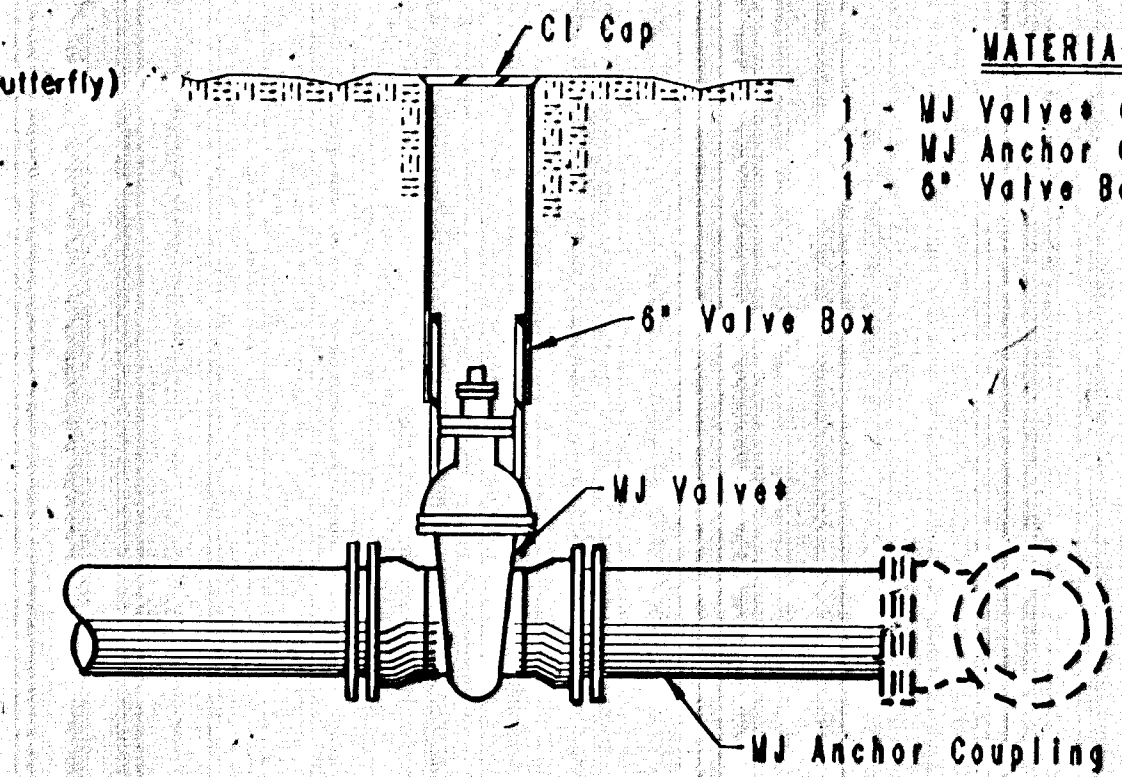
- MATERIALS LIST**
- 1 - 2" Valve Box
 - 1 - CIMJ Cap
 - 1 - 2" x 6" Brass Nipple
 - 1 - 2" IPT Mueller Valve A-2395-8-OL "T Head" or approved equal
 - 1 - 2" Galv Street Ell
 - 2 - 2" Galv Pipe (as required)
 - 1 - 2" Galv Coupling
 - 1 - 2" Galv Plug (Hand Tightened)



- MATERIALS LIST**
- 1 - MJ Valve* (Gate or Butterfly)
 - 2' - of DICL SJ Pipe
 - 1 - 6" Valve Box

VALVE ASSEMBLY

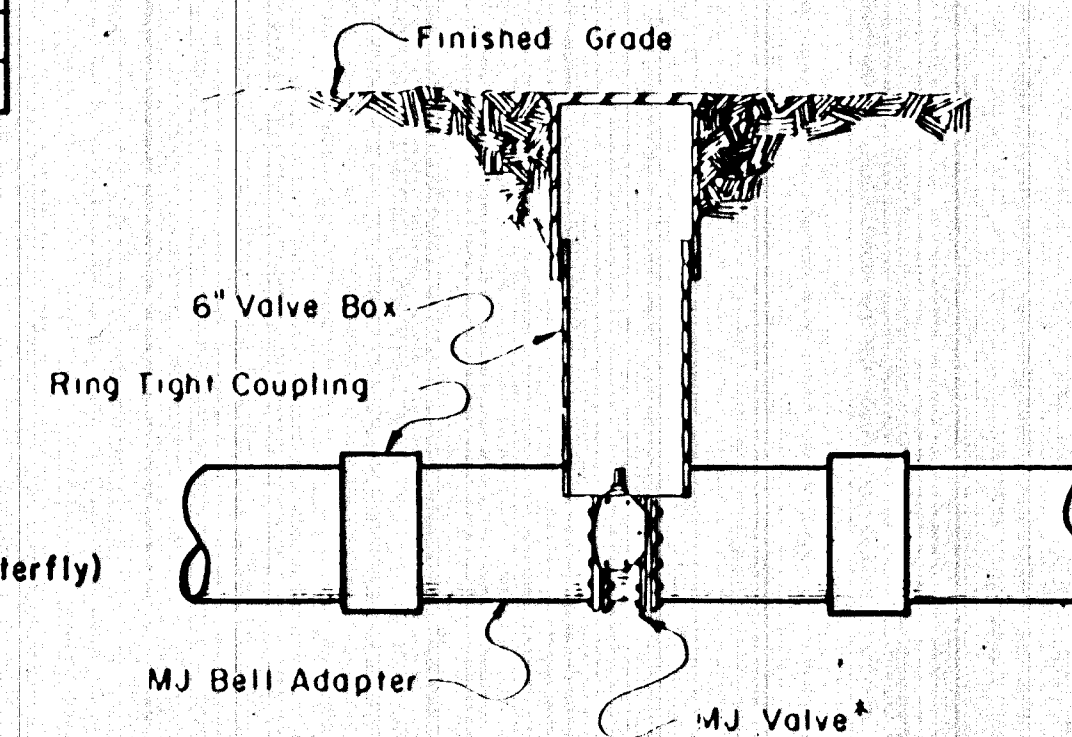
* See plans for the type of valve to be used



- MATERIALS LIST**
- 1 - MJ Valves (Gate or Butterfly)
 - 1 - MJ Anchor Coupling (12" or smaller)
 - 1 - 6" Valve Box

ANCHORED VALVE ASSEMBLY

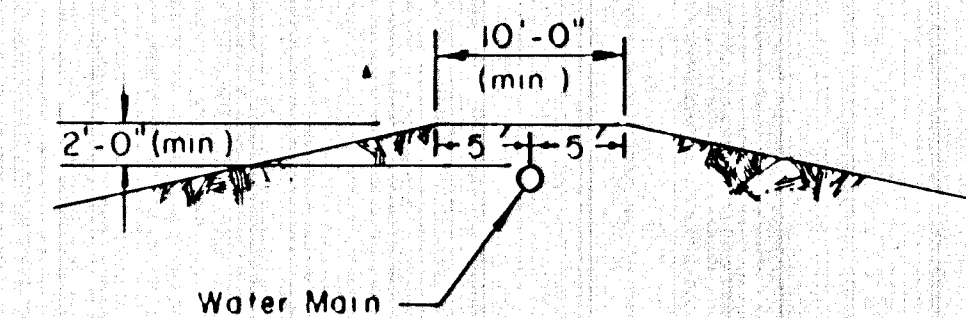
* See plans for type of valve to be used.



- MATERIALS LIST**
- 1 - MJ Valve* (Gate or Butterfly)
 - 1 - 6" Valve Box
 - 2 - Ring Tight Couplings
 - 2 - MJ Bell Adaptors

LINE VALVE ASSEMBLY

* See plans for the type of valve to be used



PROTECTIVE FILL DETAIL

MINIMUM PROTECTIVE FILL SHALL BE PROVIDED IN ALL INSTANCES WHERE COVER OVER THE PROPOSED WATER LINE IS LESS THAN TWO (2) FEET. (COST SUBSIDIARY TO PIPE INSTALLATION.)

Revised 2-17-1988

STANDARD WATER ASSEMBLY DETAILS

CITY OF WICHITA, KANSAS

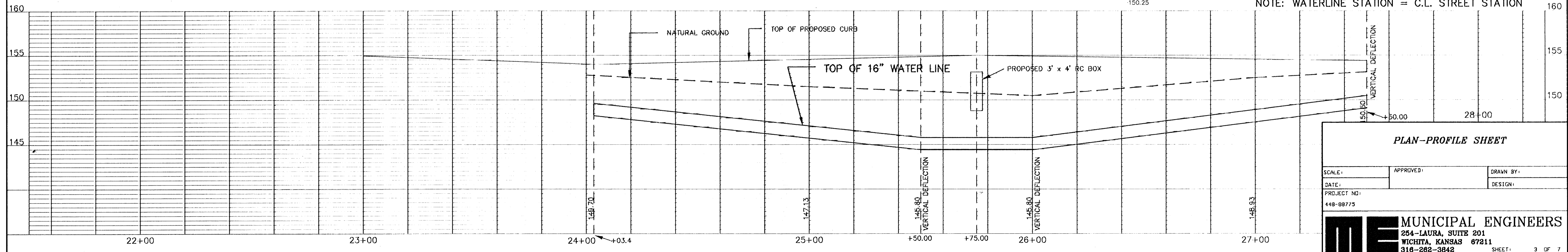
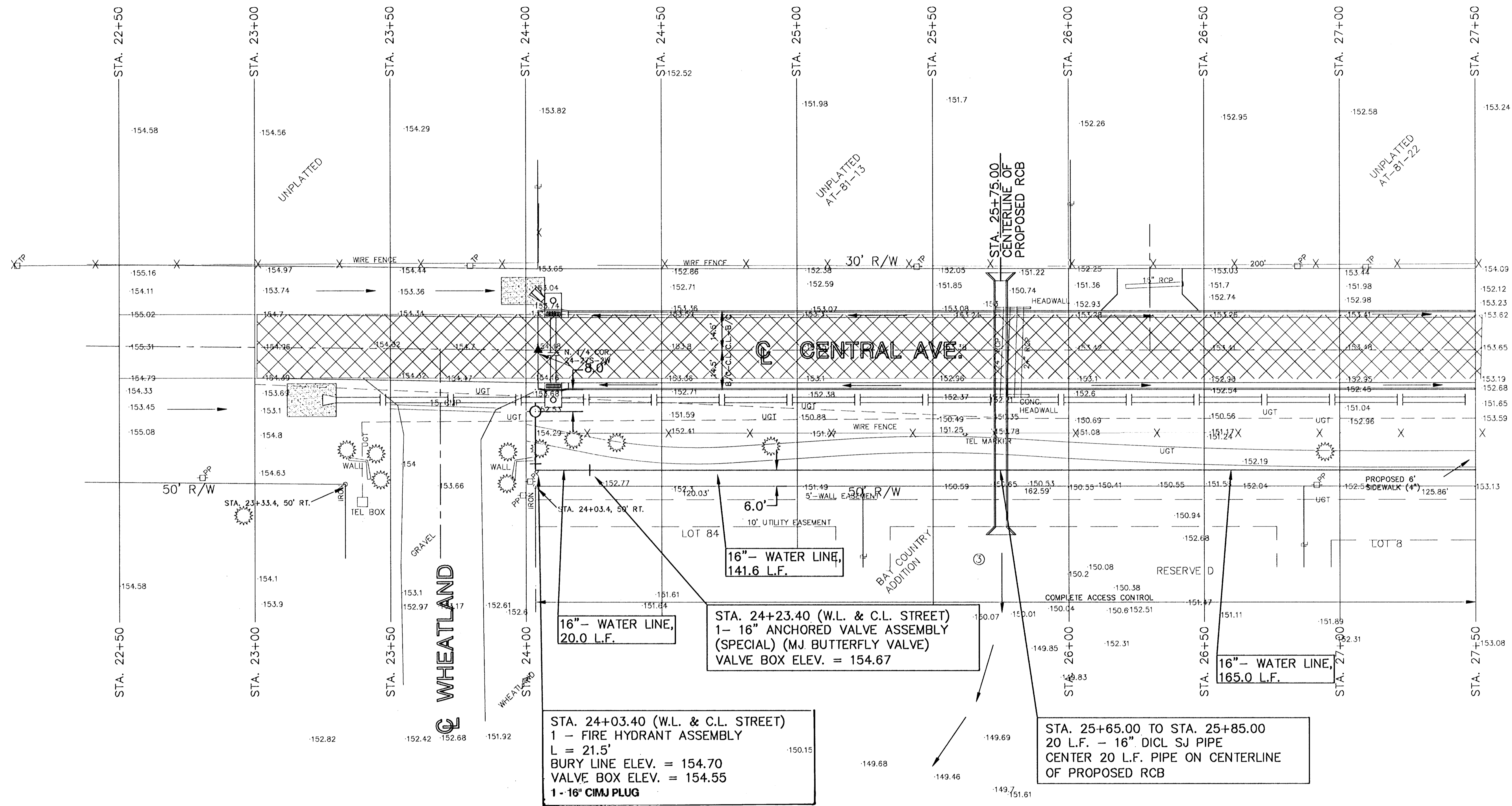
448-88775

JANUARY, 1987

2/37

NORTH 1/4 COR., SECTION 24-27S-2W
 1" IRON PIPE @ STA. 24+04.46
 31.92' N. TO 3 NAILS IN FENCE COR.
 39.48' NW TO 3 NAILS IN TELEPHONE POLE
 78.27' SW TO 'X' CUT ON TOP OF S. END OF STONE WALL
 39.41' S. TO 'X' CUT ON TOP OF E. END OF STONE WALL
 50.00' S. TO 3/4" IRON

SCALE:
 PLAN : 1" = 20'
 PROFILE : 1" = 20' (H)
 1" = 5' (V)



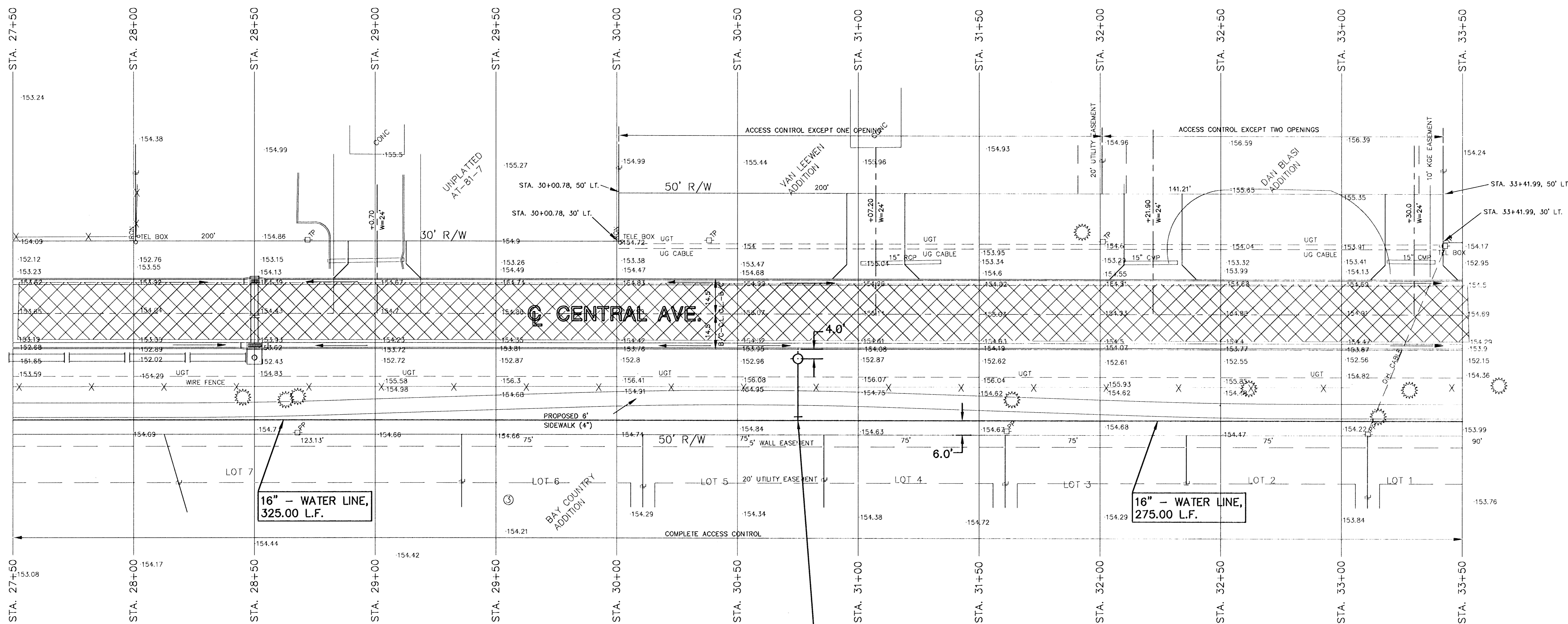
NOTE: WATERLINE STATION = C.L. STREET STATION

PLAN-PROFILE SHEET

SCALE:	APPROVED:	DRAWN BY:	
DATE:		DESIGN:	
PROJECT NO: 448-89775			
ME MUNICIPAL ENGINEERS 204-LAURA, SUITE 201 WICHITA, KANSAS 67211 316-262-3842			SHEET: 3 OF 7

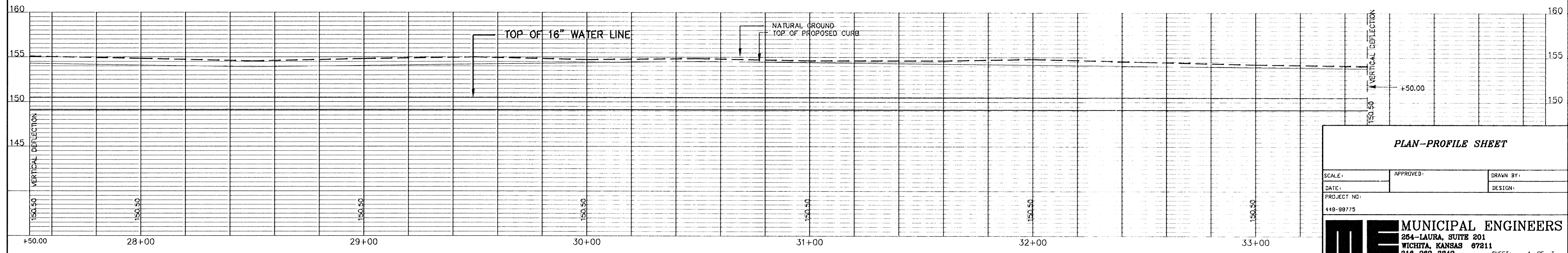
D:\ACAD\2\DWG\CENTRAL\CENT1 Thu Jun 2 14:58:03 1994 95779

SCALE:
 PLAN : 1" = 20'
 PROFILE : 1" = 20' (H)
 1" = 5' (V)



STA. 30+75.00 (W.L. & STREET)
 1 - FIRE HYDRANT ASSEMBLY
 L = 25.5'
 TOP OF VALVE BOX ELEV. = 155.08
 BURY LINE ELEV. = 154.96

NOTE: WATERLINE STATION = C.L. STREET STATION



PLAN-PROFILE SHEET

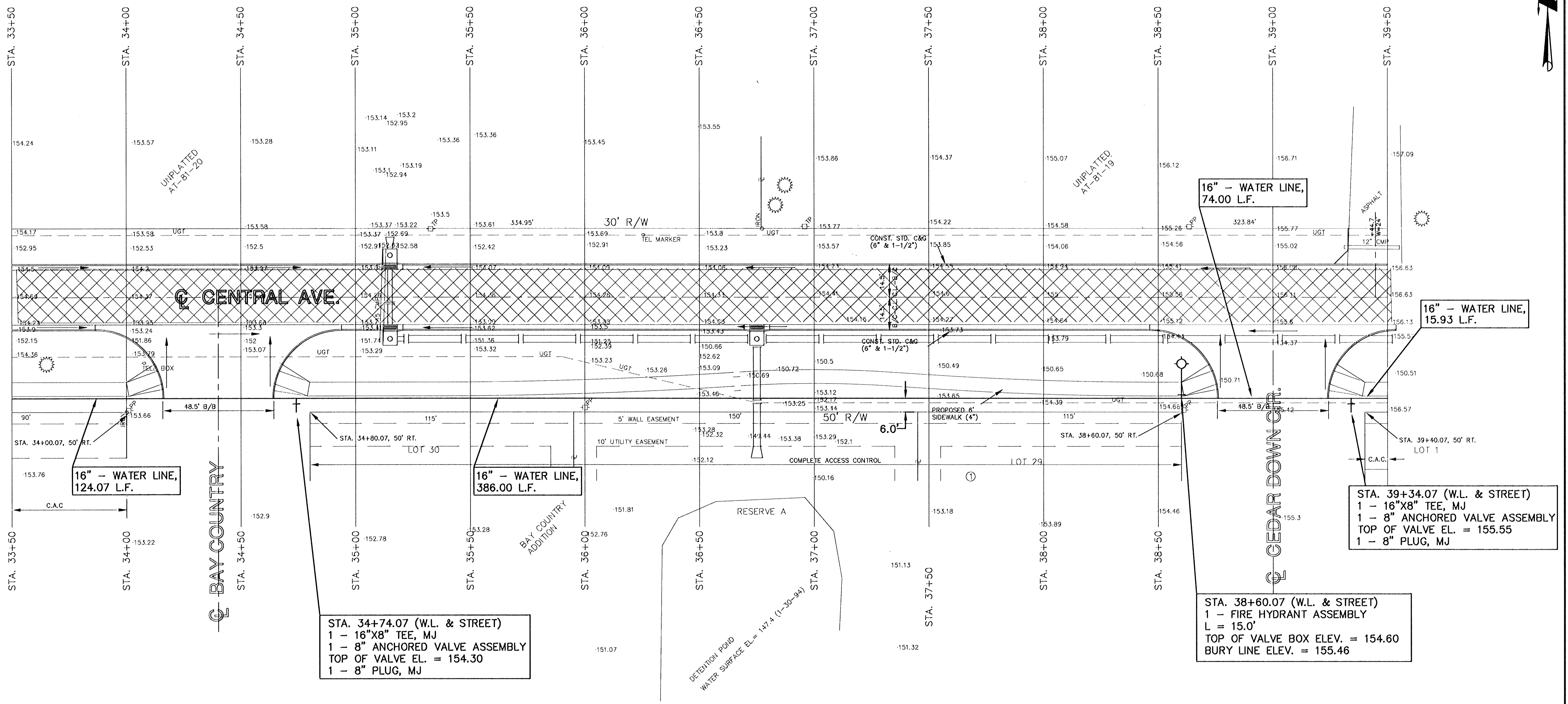
SCALE:	APPROVED:	DRAWN BY:
DATE:		DESIGN:
PROJECT NO:	449-88775	

ME MUNICIPAL ENGINEERS
 254-LAURA, SUITE 201
 WICHITA, KANSAS 67211
 316-262-3842

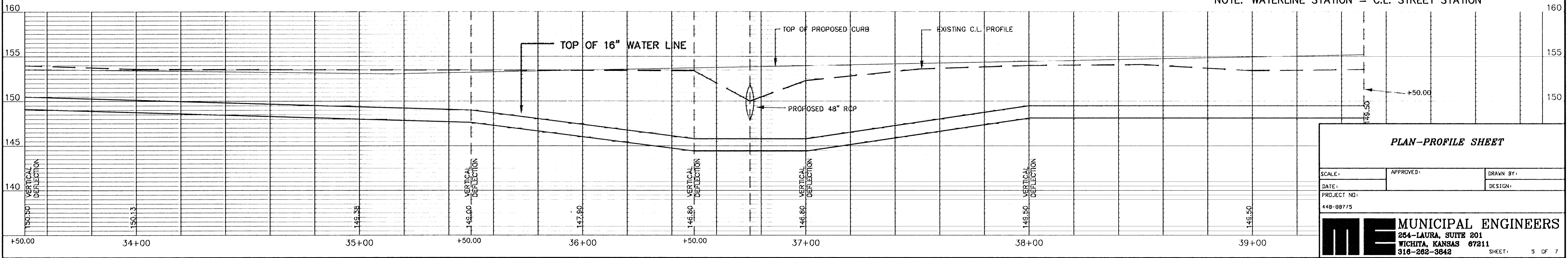
SHEET: 4 OF 7

D:\CAD\12\CAD\CENTRAL\CENTRAL2 Thu Jun 2 15:35:24 1984 95-79

SCALE:
 PLAN : 1" = 20'
 PROFILE : 1" = 20' (H)
 1" = 5' (V)



NOTE: WATERLINE STATION = C.L. STREET STATION



PLAN-PROFILE SHEET

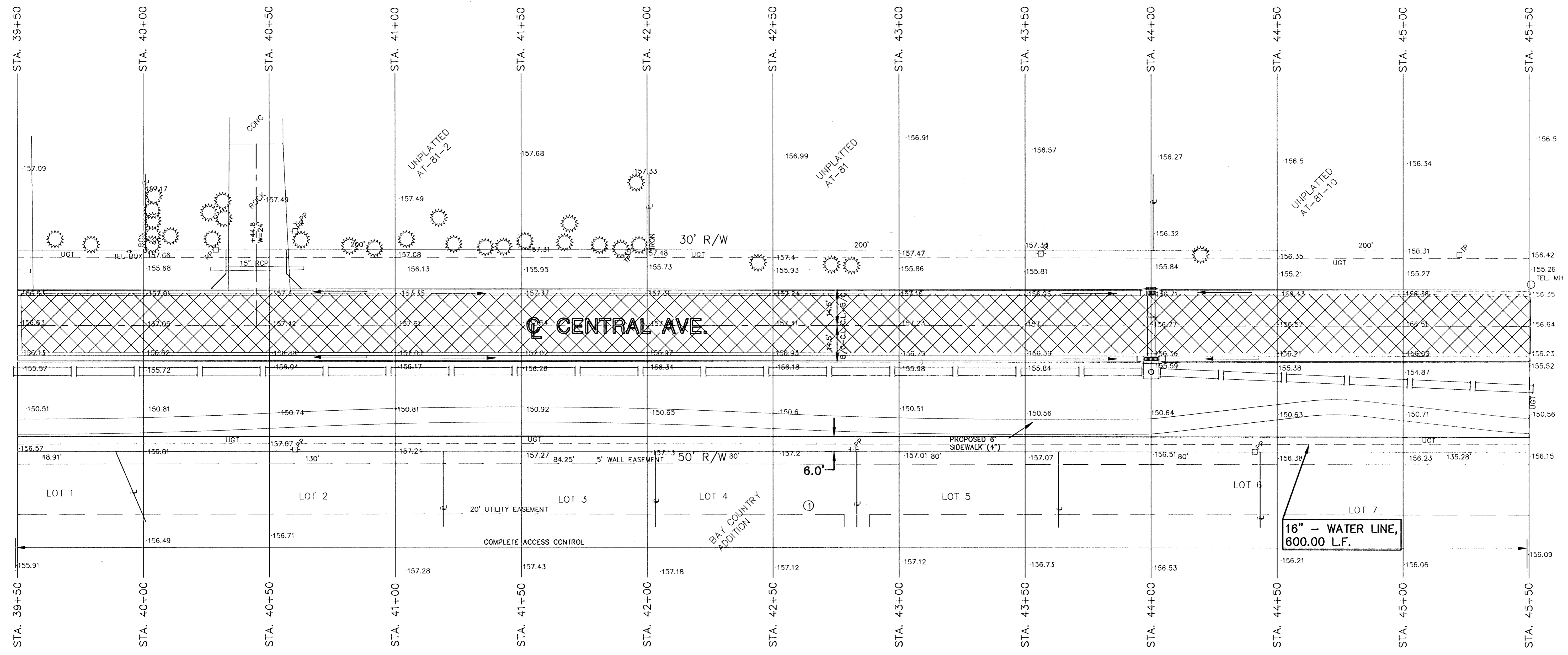
SCALE:	APPROVED:	DRAWN BY:
DATE:		DESIGN:
PROJECT NO:	448-09775	

ME MUNICIPAL ENGINEERS
 284-LAURA, SUITE 201
 WICHITA, KANSAS 67211
 316-262-3842

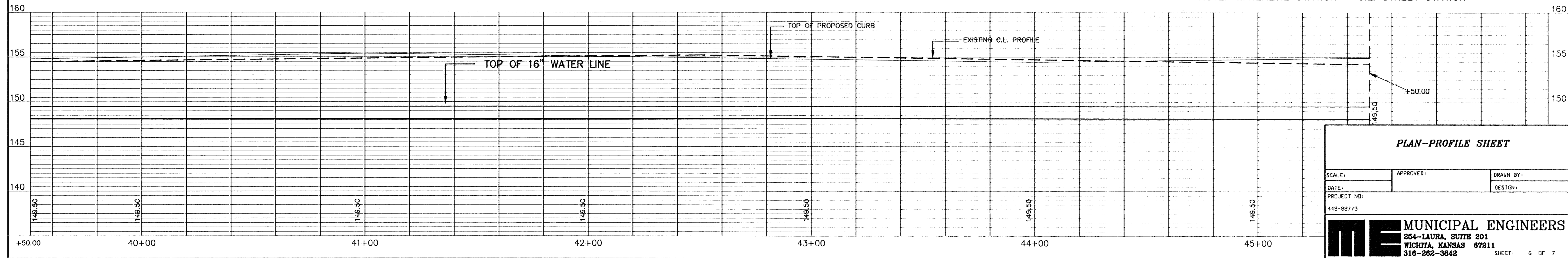
SHEET: 5 OF 7

D:\VACAD\2\DWG\CENTRAL\CENT3 Thu Jun 2 15:48:10 1994 95:79

SCALE:
 PLAN : 1" = 20'
 PROFILE : 1" = 20' (H)
 1" = 5' (V)



NOTE: WATERLINE STATION = C.L. STREET STATION



PLAN-PROFILE SHEET		
SCALE:	APPROVED:	DRAWN BY:
DATE:		DESIGN:
PROJECT NO. 44B-88773	MUNICIPAL ENGINEERS 204-LAURA, SUITE 201 WICHITA, KANSAS 67211 316-282-3842	
		SHEET: 6 OF 7

D:\ADJUDICATING\CENTRAL\CENTRAL 4 Thu Jun 2 15:46:06 1994 85:79

