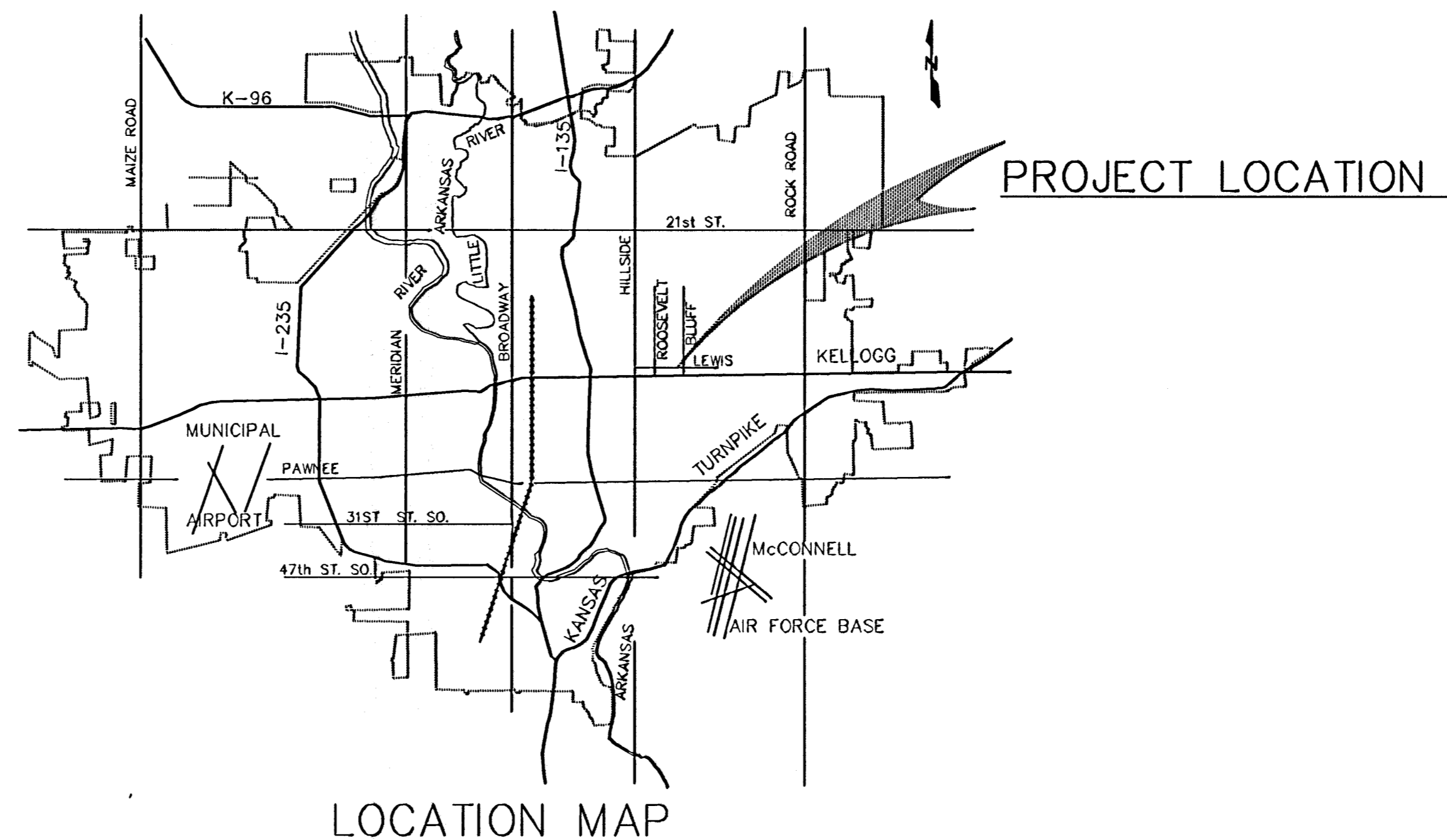


CONSTRUCTION PLANS FOR
 WATER DISTRIBUTION SYSTEM IMPROVEMENTS
 LEWIS – ROOSEVELT TO BLUFF
 THE CITY OF WICHITA,
 SEDGWICK COUNTY, KANSAS
 MICHAEL E. LINDEBAK, P.E. – CITY ENGINEER

AutoCAD Drawing File Name 9426F-1.DWG
 Archive Computer Disk # ACAD-DWG19
 Plot Scale 1/300



DRAWING INDEX

- SHEET NO. 1 TITLE SHEET
- SHEET NO. 2 KEY MAP AND PLAT DATA
- SHEET NO. 3 STANDARD DETAILS
- SHEET NO. 4 PLAN/PROFILE

INDEX CODE – 632133

CITY OF WICHITA PROJECT NO 448 88819

JUNE, 1994

PLANS PREPARED BY
CASTLE & ASSOCIATES
 WICHITA, KANSAS



CITY OF WICHITA			
WATER DISTRIBUTION SYSTEM IMPROVEMENTS			
TITLE SHEET			
CASTLE & ASSOCIATES ENGINEERS WICHITA, KANSAS	DSG DR CH APP	DWG FILE NO 9426F - D - 90,066	
		DATE JUNE 1994	SHEET NO 1 OF 4



KEY MAP

NOTE: WATER LINE VALVES TO BE OPERATED BY CONTRACTOR
 ONLY IF A WATER DEPT. REPRESENTATIVE IS ON SITE.

EXISTING 2" WATER LINE

EXISTING 6" WATER LINE

PROPOSED 6" WATER LINE
 SEE SHEET 4

LEGEND

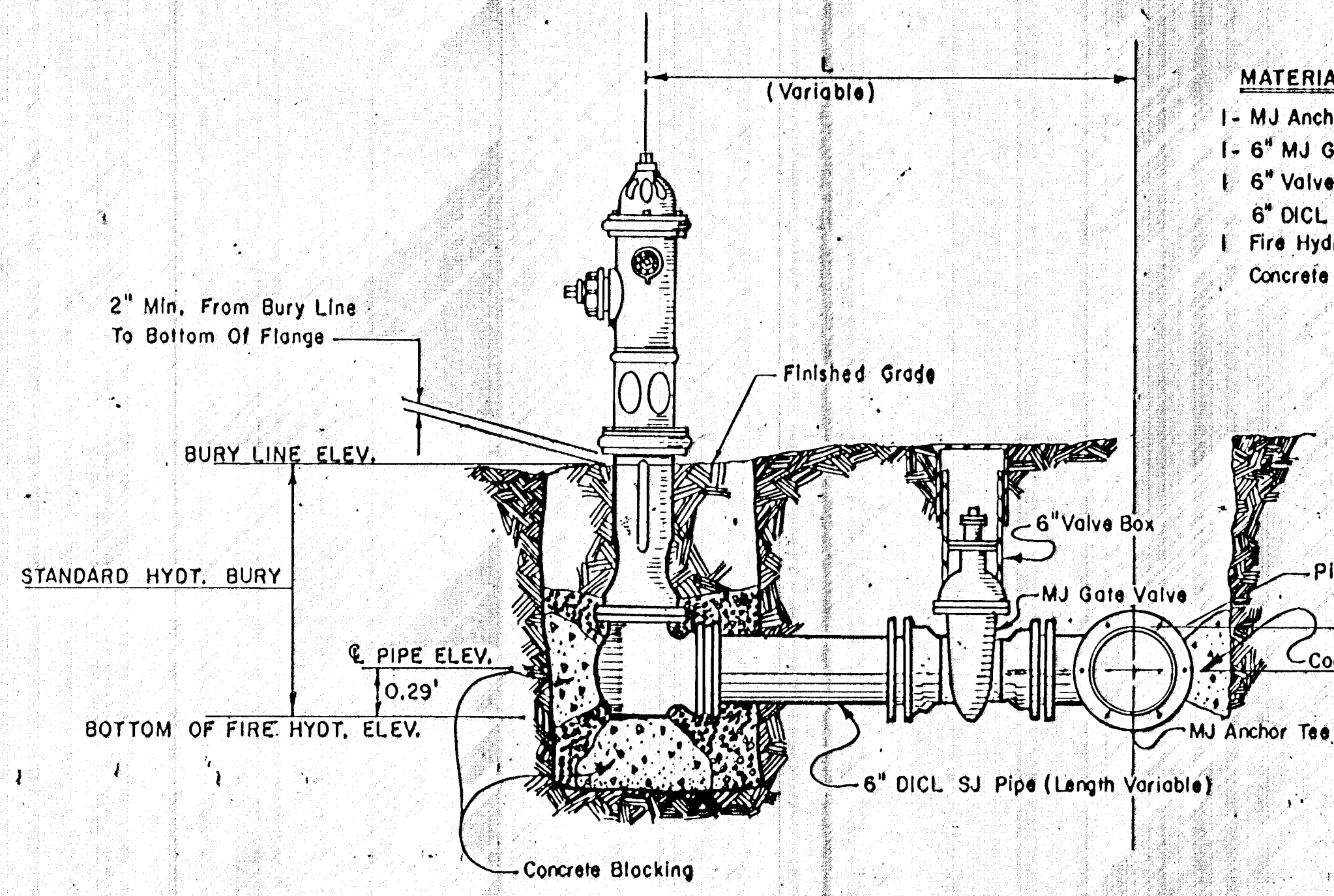
- EXISTING WATER LINE
- PROPOSED WATER LINE

GENERAL NOTES

1. ALL ELEVATIONS SHOWN ARE CITY OF WICHITA DATUM.
2. CONTRACTOR WILL BE REQUIRED TO PROVIDE A MINIMUM ADVANCE NOTICE OF FORTY-EIGHT (48) HOURS TO UTILITY COMPANIES PRIOR TO STARTING ANY EXCAVATION AS FOLLOWS:
 KANSAS ONE-CALL 687-2470
- THE CONTRACTOR MUST NOTIFY THE FOLLOWING IN CASE OF AN EMERGENCY:
 CABLEVISION 262-4270 OR 263-2061
 KG&E - GAS 263-7511
 KG&E - ELECTRIC 264-1141
 ARKLA GAS COMPANY 942-8350 OR 263-8161
 SOUTHWESTERN BELL TELEPHONE CO. 1-571-2611
 CITY OF WICHITA WATER DEPARTMENT 268-4908
 CITY OF WICHITA SEWER MAINTENANCE 733-0202
3. ALL WATER MAINS AND APPURTENANCES SHALL BE INSTALLED IN ACCORDANCE WITH CITY OF WICHITA, KANSAS STANDARD SPECIFICATIONS FOR WATER MAIN INSTALLATIONS NO. 14533.
4. THE WATER MAIN SHALL BE CONSTRUCTED ON THE ALIGNMENT SHOWN BY THE PLANS. THE EXISTING WATER MAINS ARE TO BE KEPT IN SERVICE UNTIL THE NEW WATER MAIN IS COMPLETED AND IN SERVICE. TREES AND SHRUBS IN PUBLIC RIGHT-OF-WAY WHICH ARE IN DIRECT CONFLICT WITH PROPOSED NEW CONSTRUCTION SHALL BE REMOVED BY THE CONTRACTOR WITH THE ENGINEER'S APPROVAL. TREES AND SHRUBS WHICH ARE NOT IN DIRECT CONFLICT WITH PROPOSED NEW CONSTRUCTION SHALL BE SAVED AND PROTECTED FROM DAMAGE. THE COST FOR ANY NECESSARY TREE TRIMMING CLEARING AND/OR GRUBBING SHALL BE SUBSIDIARY TO SITE CLEARING.
5. OPENING AND CLOSING WATER VALVES SHALL BE DONE SLOWLY TO PREVENT DAMAGE TO THE WATER DISTRIBUTION SYSTEM FROM WATER HAMMER. ALL VALVES CLOSED BY THE CONTRACTOR MUST BE REOPENED AS NEW CONSTRUCTION PERMITS. PROJECT INSPECTOR MUST ASCERTAIN THAT ANY VALVE CLOSED BY THE CONTRACTOR IS REOPENED. CONTRACTOR WILL BE PERMITTED TO OPERATE WATER VALVES ONLY WHEN THE PROJECT INSPECTOR ASSIGNED TO THE PROJECT IS PRESENT.
6. CONTRACTOR SHALL NOT START WORK ON THE PROJECT UNTIL THE PROJECT INSPECTOR IS ASSIGNED TO THE PROJECT AND IS PRESENT ON THE SITE. ANY WORK DONE WITHOUT INSPECTION WILL BE REQUIRED TO BE UNCOVERED FOR INSPECTION.
7. THE CONTRACTOR SHALL GIVE ALL PROPERTY OWNERS AND/OR TENANTS OF DEVELOPED PROPERTY DIRECTLY ADJUTING THE CONSTRUCTION OF THIS PROJECT A MINIMUM OF TEN (10) DAYS ADVANCE NOTICE PRIOR TO START OF CONSTRUCTION.
8. THE CONTRACTOR SHALL BE RESPONSIBLE FOR PRESERVING PROPERTY IRONS. THE CONTRACTOR SHALL BE REQUIRED TO RE-ESTABLISH ANY PROPERTY IRONS WHICH ARE DAMAGED OR DESTROYED BY HIS CONSTRUCTION OPERATIONS. SUCH IRONS SHALL BE RE-ESTABLISHED BY A LICENSED LAND SURVEYOR IN ACCORDANCE WITH STATE LAWS. ALL COSTS FOR THIS WORK SHALL BE SUBSIDIARY TO SITE RESTORATION.
9. THE CONTRACTOR SHALL RESTORE ALL DITCHES, SWALES, ROAD SHOULDERS, ENTRANCES, AND BANK LINES TO THEIR ORIGINAL SLOPES AND GRADES EXCEPT AS SHOWN OTHERWISE.
10. ALL SERVICES WILL BE RECONNECTED TO THE NEW WATER MAIN BY THE CONTRACTOR AFTER THE NEW WATER MAIN HAS BEEN PLACED IN SERVICE. ALL SERVICES CONTAINING LEAD OR GALVANIZED STEEL PIPE SHALL BE REPLACED. COPPER AND PLASTIC SERVICES ARE TO BE RECONNECTED.
11. INTERURBAN TRAFFIC GENERATED OUTSIDE THE PROJECT AREA AND LOCAL BUSINESS OR RESIDENTIAL TRAFFIC GENERATED WITHIN THE PROJECT AREA ARE TO BE CARRIED THROUGH CONSTRUCTION AS FURTHER PROMULGATED BY PROJECT SPECIAL PROVISIONS.
12. RUBBLE FROM THE REMOVAL OF MISCELLANEOUS STRUCTURES INCLUDING ANY TREES REMOVED AND TREE TRIMMINGS SHALL BE DISPOSED OF ON SITES PROVIDED BY THE CONTRACTOR. THESE SITES SHALL ALSO BE APPROVED OF BY THE ENGINEER AS TO SUITABILITY, APPEARANCE, AND SITE LOCATION. LOCATIONS THAT IN THE OPINION OF THE ENGINEER, LEAVE AN UNSIGHTLY APPEARANCE WILL NOT BE APPROVED. ALL DISPOSAL SITES MUST BE APPROVED BY THE KANSAS DEPARTMENT OF HEALTH AND ENVIRONMENT. MATERIAL EITHER STOCKPILED OR DISPOSED OF IN A FLOOD PLAIN WILL REQUIRE A KANSAS STATE BOARD OF AGRICULTURE PERMIT. ANY MATERIAL DUMPED IN WATERS OF THE UNITED STATES OR WETLANDS IS SUBJECT TO US CORPUS OF ENGINEERS PERMITTING REGULATIONS ANY MATERIAL BURIED OR STOCKPILED BEYOND APPROVED CONSTRUCTION LIMITS MAY REQUIRE ARCHAEOLOGICAL INVESTIGATIONS UNLESS BURIED IN A PREVIOUSLY APPROVED DISPOSAL LOCATION.
13. ALL LAWN/TURF AREAS DISTURBED BY CONSTRUCTION OF THE PROPOSED IMPROVEMENTS SHALL BE RESTORED WITH THE SAME GRASS/SOD AS EXISTING. RESTORATION OF DISTURBED AREAS SHALL INCLUDE, BUT NOT BE LIMITED TO, TOP SOIL PREPARATION, SEEDING, MULCH, AND/OR RESEEDING. ALL SEEDING/SODDING WORK SHALL BE IN ACCORDANCE WITH THE CITY OF WICHITA STANDARD SPECIFICATIONS AND THE CITY OF WICHITA ADMINISTRATIVE REGULATION NO. AR78 WHICH GOVERNS CLEANUP AND RESTORATION OR REPLACEMENT FOLLOWING CONSTRUCTION. ALL COSTS FOR THIS WORK SHALL BE SUBSIDIARY TO THE LUMP SUM PRICE BID FOR "SITE RESTORATION".
14. PAVEMENT REMOVAL AND/OR REPLACEMENT WILL BE MEASURED AND PAID FOR ON THE LINEAL FOOT BASIS AS MEASURED ALONG THE CENTERLINE OF THE WATER LINE REGARDLESS OF WIDTH, PAVEMENT TYPE AND/OR PAVEMENT THICKNESS. MINIMUM LIMITS OF SUCH PAVEMENT REMOVAL AND REPLACEMENT SHALL BE ONE FOOT BEYOND THE LIMITS OF THE EXCAVATION MADE FOR THE WATER LINE OR THE STRUCTURE, EXCEPT WHEN SUCH SAW CUTS ARE WITHIN THREE (3) FEET OF AN EXISTING JOINT THE LIMITS OF REMOVAL SHALL BE EXTENDED TO THE EXISTING JOINT. REMOVAL AND REPLACEMENT OF EXISTING PAVEMENT SHALL CONFORM TO THE APPLICABLE SECTIONS OF THE CITY OF WICHITA STANDARD SPECIFICATIONS.



CITY OF WICHITA PROJECT NO. 448-88919	
CITY OF WICHITA WATER DISTRIBUTION SYSTEM IMPROVEMENTS	
KEY MAP AND PLAT DATA	
CASTLE & ASSOCIATES ENGINEERS WICHITA, KANSAS	DSG DR.S.L.O. CH APP DWG FILE NO. 9426F-D-901067 SHEET NO 2 OF 2
DATE: JUNE 1994	REV.

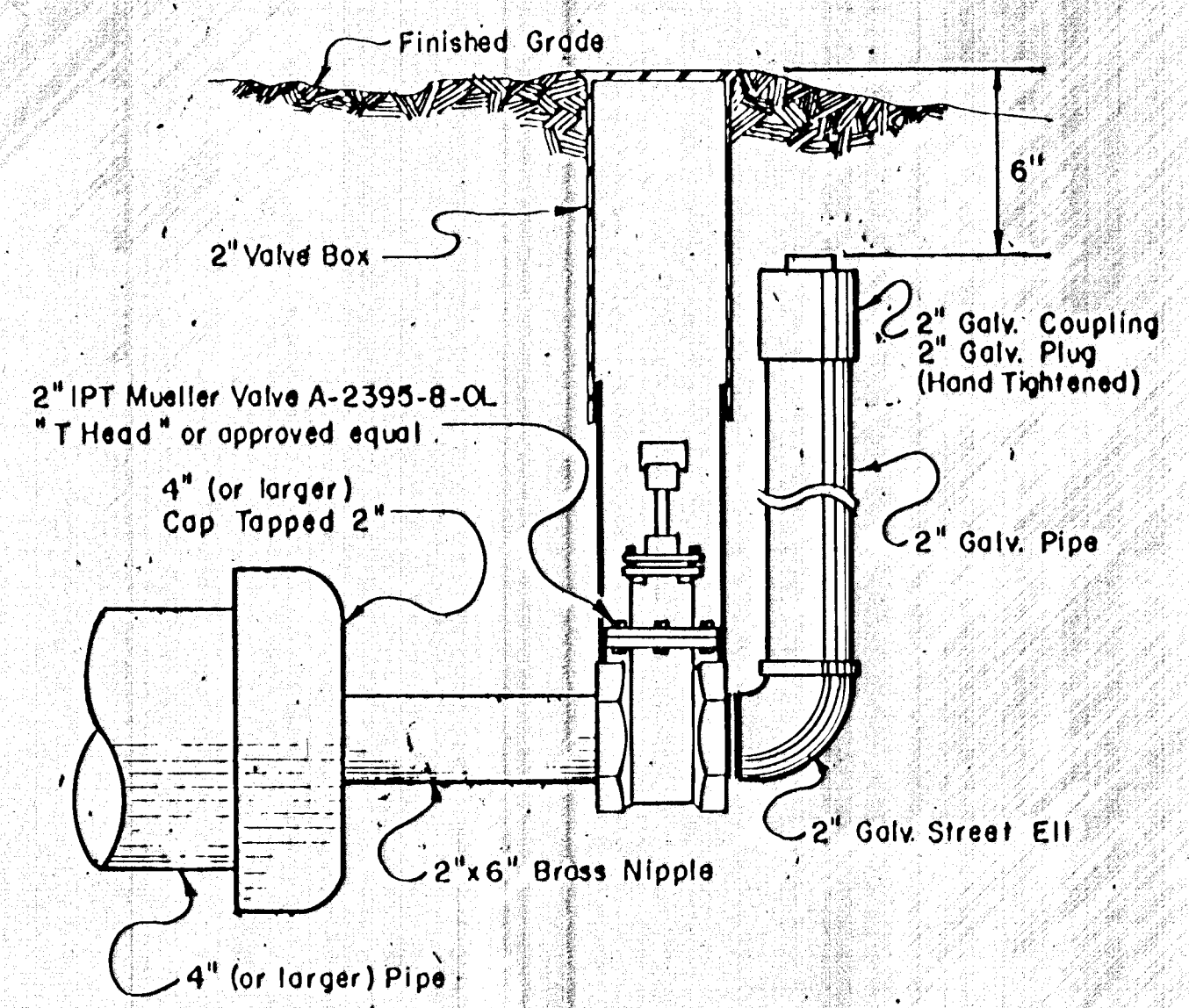


- MATERIALS LIST**
- 1 - MJ Anchor Tee (1" D" x 6")
 - 1 - 6" MJ Gate Valve
 - 1 - 6" Valve Box
 - 6" D.I.C.L. S.J. Pipe (Length Variable)
 - 1 Fire Hydrant
 - Concrete Blocking (As Needed)

FIRE HYDRANT ASSEMBLY

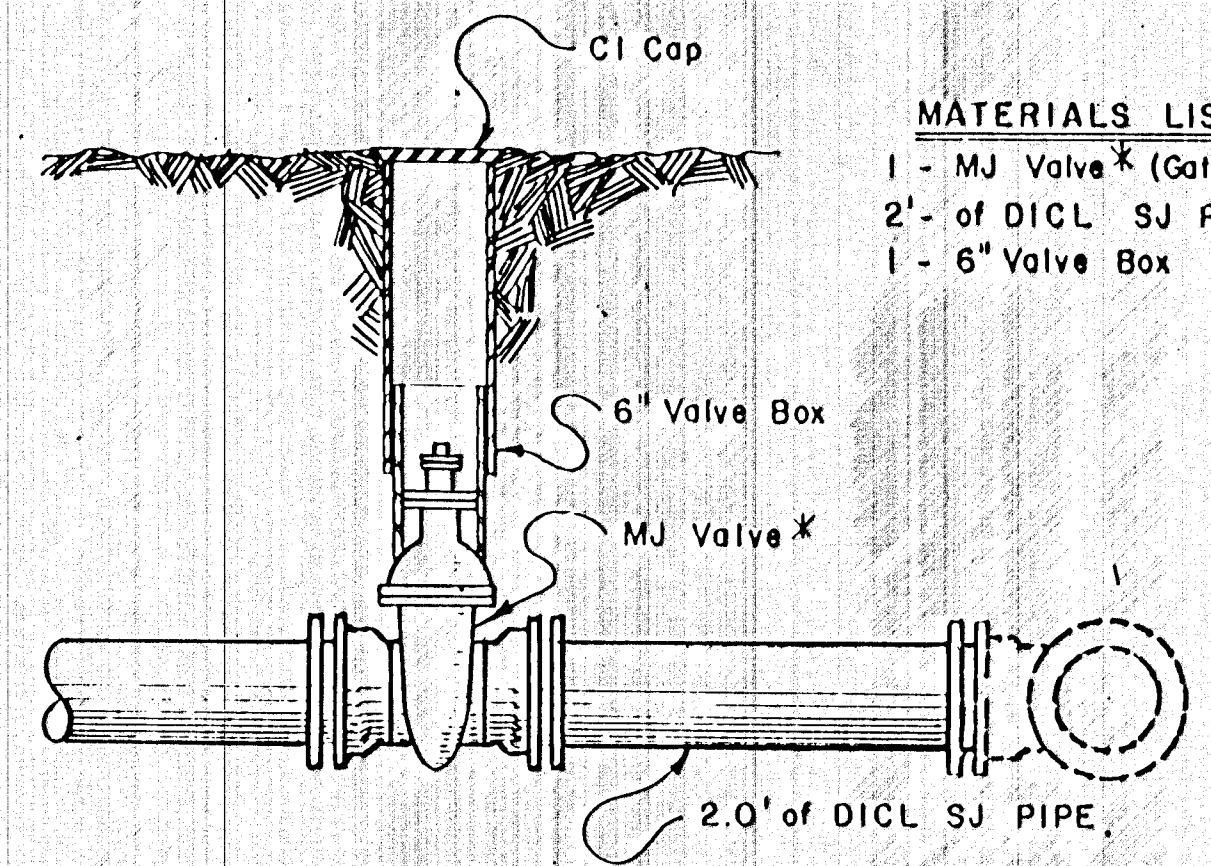
***FIRE HYDRANTS REQUIRED**

LINE NO.	STATION	BURY LINE ELEVATION	TOP OF PIPE ELEVATION	FIRE HYDRANT BURY REQUIRED
1	0+83	109.35	104.83	4.5
1	3+84	109.49	104.85	5.0



- MATERIALS LIST**
- 1 - 2" Valve Box
 - 1 - CIMJ Cap
 - 1 - 2"x6" Brass Nipple
 - 1 - 2" IPT Mueller Valve A-2395-B-OL
 - "T Head" or approved equal
 - 1 - 2" Galv. Street Ell
 - 2" Galv. Pipe (as required)
 - 1 - 2" Galv. Coupling
 - 1 - 2" Galv. Plug (Hand Tightened)

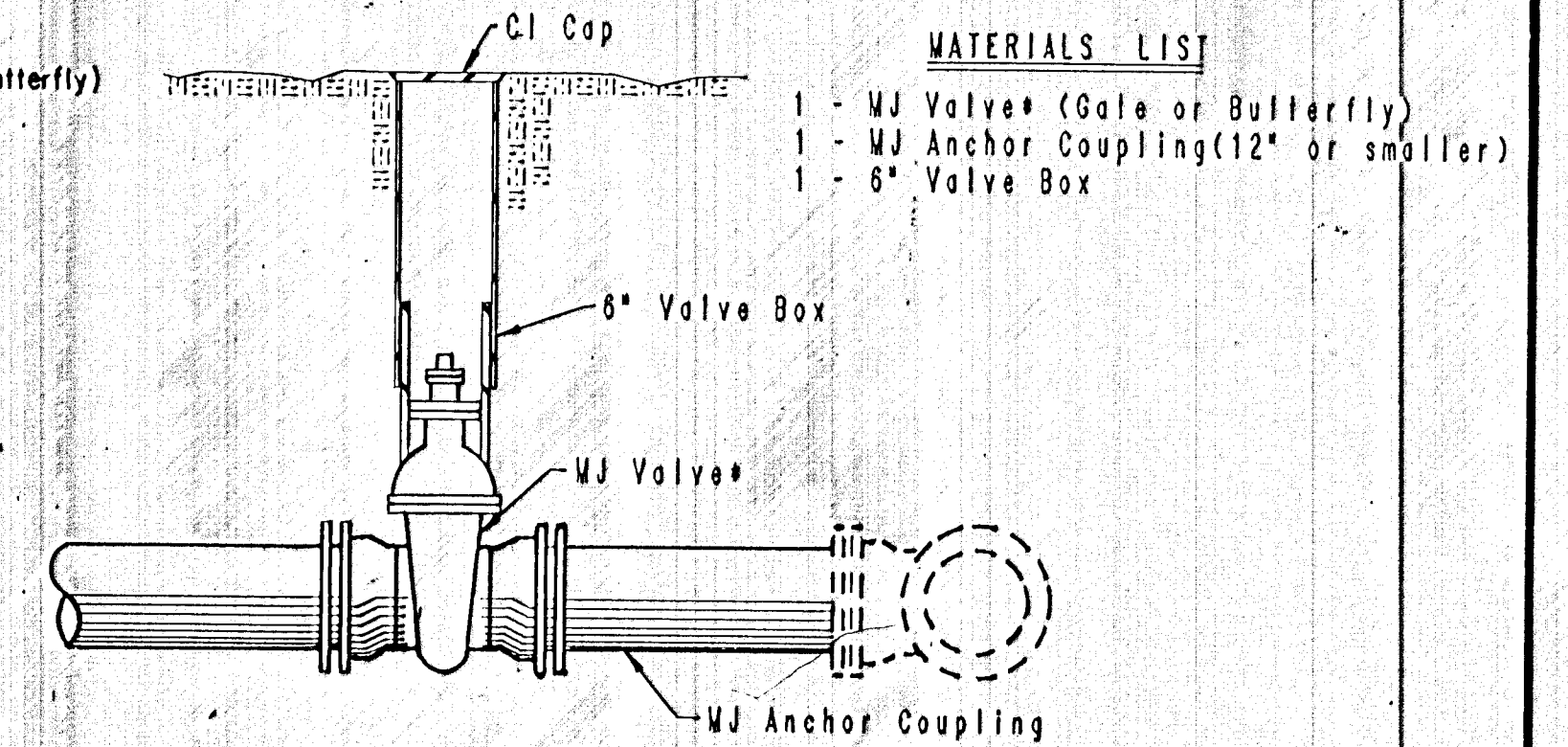
2" BLOWOFF ASSEMBLY



- MATERIALS LIST**
- 1 - MJ Valve* (Gate or Butterfly)
 - 2' - of D.I.C.L. S.J. Pipe
 - 1 - 6" Valve Box

VALVE ASSEMBLY

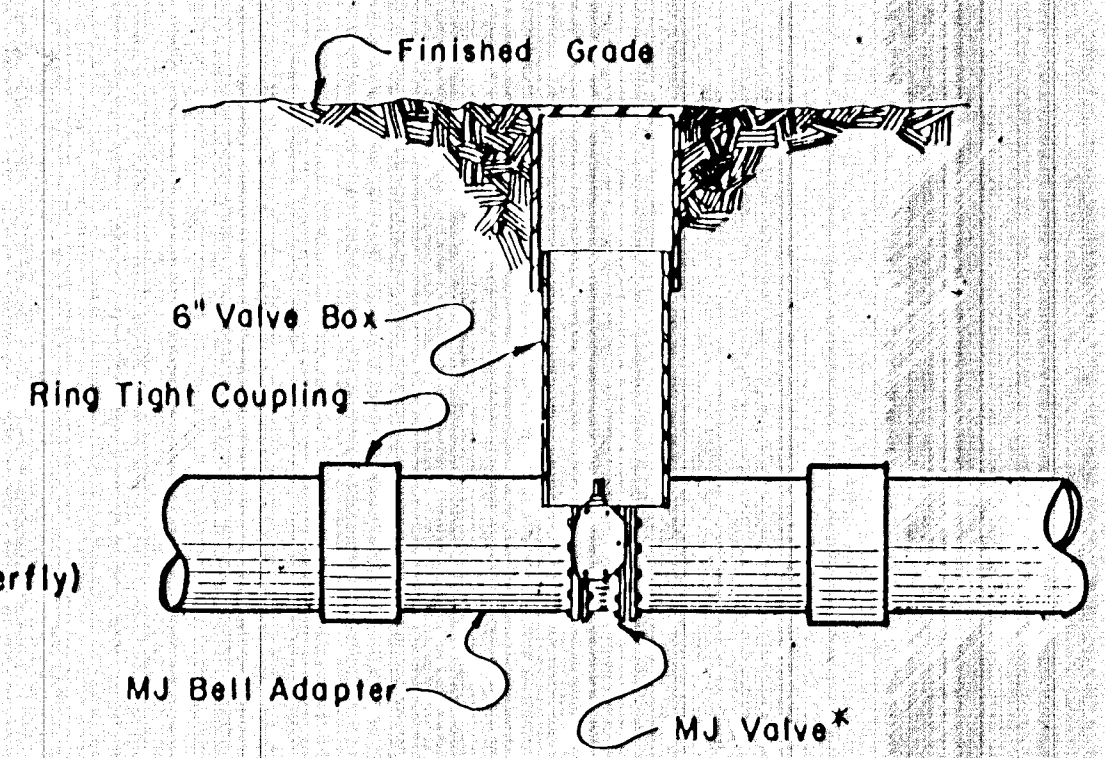
*See plans for the type of valve to be used.



- MATERIALS LIST**
- 1 - MJ Valve* (Gate or Butterfly)
 - 1 - MJ Anchor Coupling (12" or smaller)
 - 1 - 6" Valve Box

ANCHORED VALVE ASSEMBLY

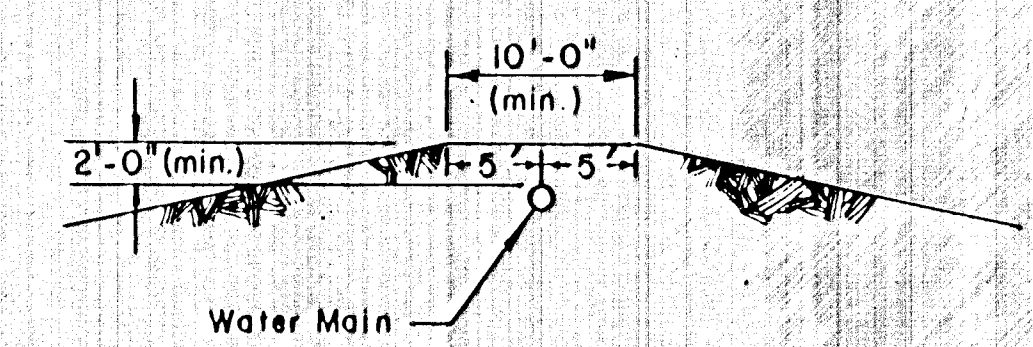
*See plans for type of valve to be used.



- MATERIALS LIST**
- 1 - MJ Valve* (Gate or Butterfly)
 - 1 - 6" Valve Box
 - 2 - Ring Tight Couplings
 - 2 - MJ Bell Adaptors

LINE VALVE ASSEMBLY

*See plans for the type of valve to be used.



PROTECTIVE FILL DETAIL

MINIMUM PROTECTIVE FILL SHALL BE PROVIDED IN ALL INSTANCES WHERE COVER OVER THE PROPOSED WATER LINE IS LESS THAN TWO (2) FEET. (COST SUBSIDIARY TO PIPE INSTALLATION.)

Revised 2-17-1988 C.O.W. PROJECT NO. 448-88819

STANDARD WATER ASSEMBLY DETAILS
CITY OF WICHITA, KANSAS

JANUARY, 1987
DWG. FILE NO 9426F-D-90,069

SHEET
3 OF
4