

N- 10,068.7743, E- 8,985.4547
 FP 1, Sta. 0+00.0
 Existing 8" Water Main *
 1- 8" x 6" Tapping-Sleeve Tee
 1- 6" Tapping Valve
 1- 6" Valve Box
 (To be furnished and set by
 City of Wichita Water Dept.)
 Top Valve Box El.= 157.00

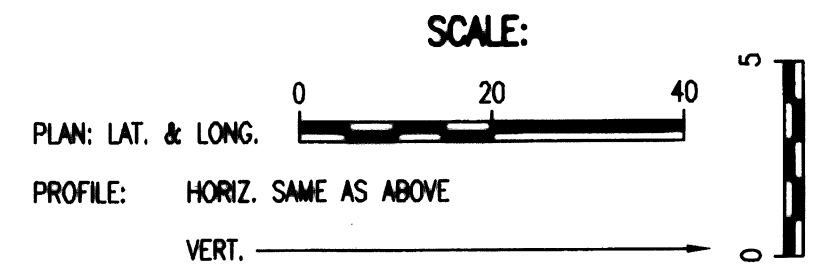
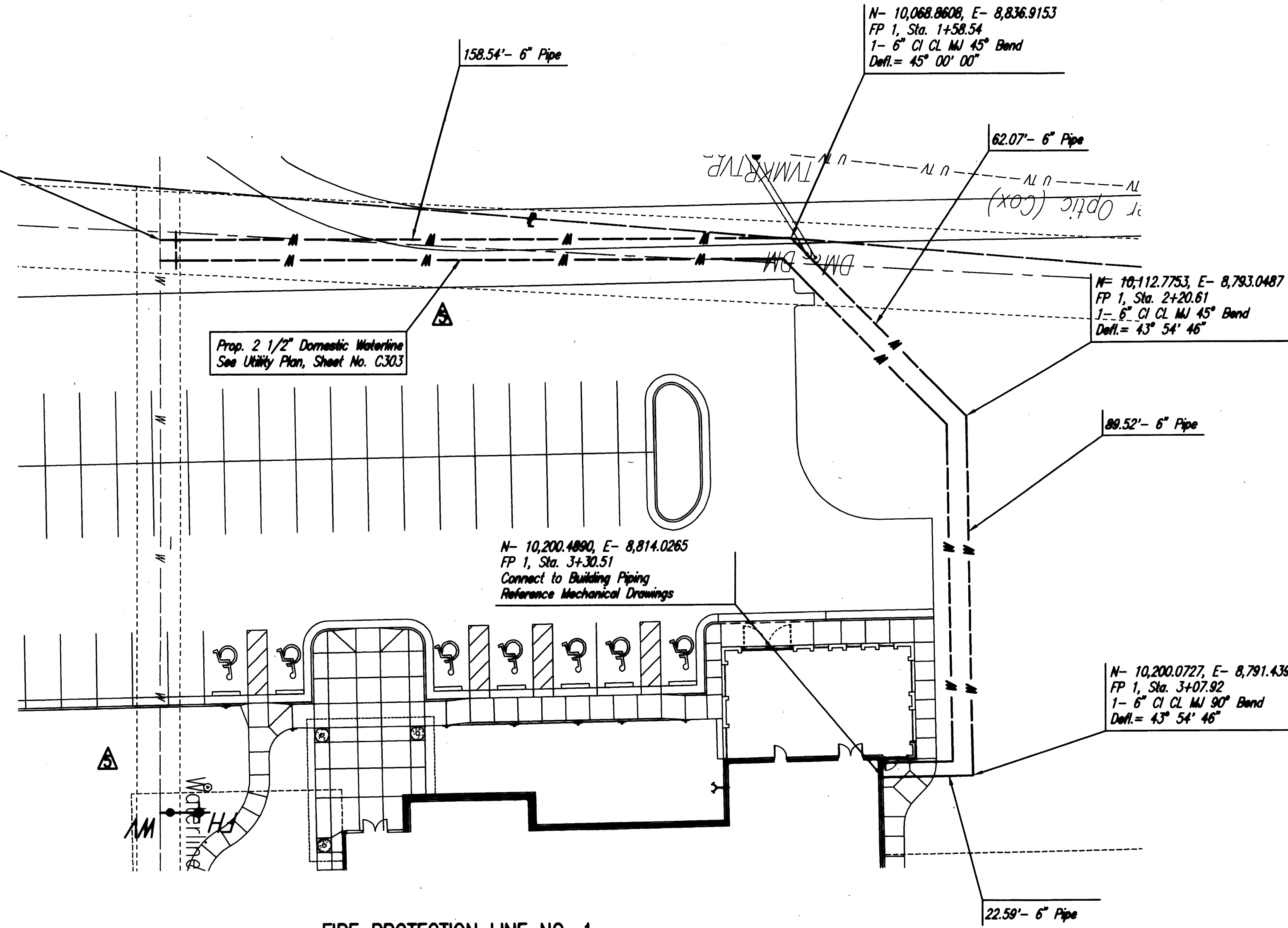
N- 10,068.8608, E- 8,836.9153
 FP 1, Sta. 1+58.54
 1- 6" CI CL MJ 45° Bend
 Defl.= 45° 00' 00"

N- 10,112.7753, E- 8,793.0487
 FP 1, Sta. 2+20.61
 1- 6" CI CL MJ 45° Bend
 Defl.= 43° 54' 46"

N- 10,200.4890, E- 8,814.0265
 FP 1, Sta. 3+30.51
 Connect to Building Piping
 Reference Mechanical Drawings

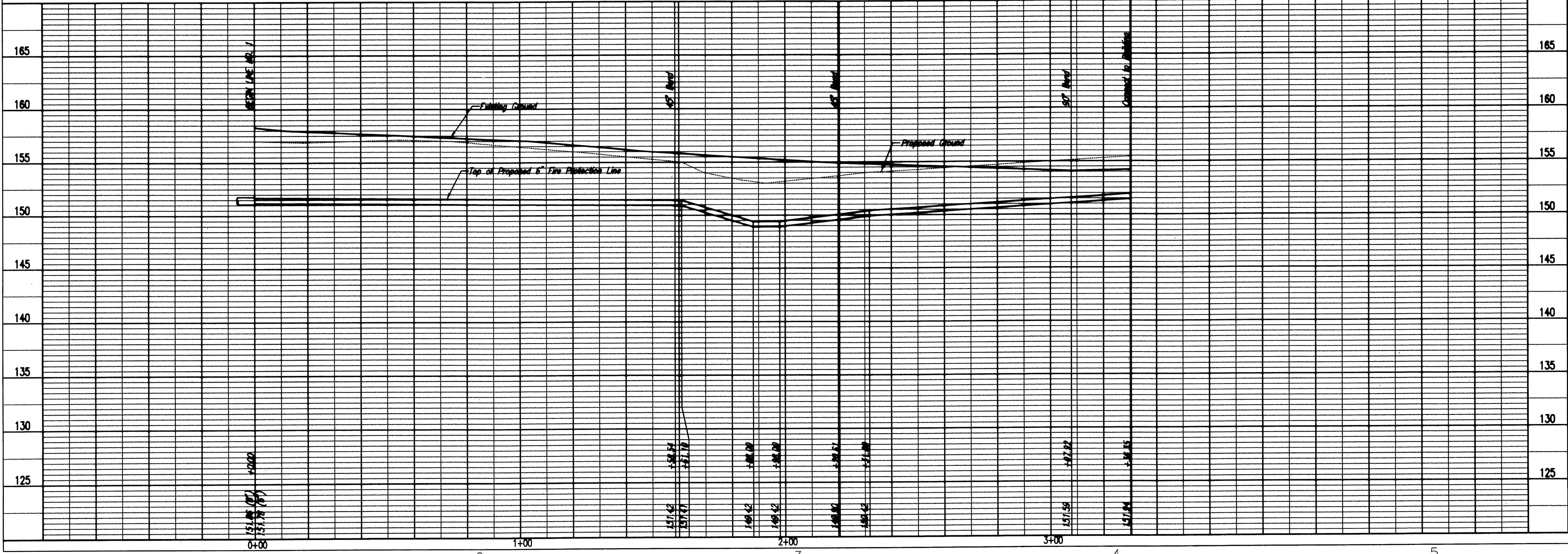
N- 10,200.0727, E- 8,791.4396
 FP 1, Sta. 3+07.92
 1- 6" CI CL MJ 90° Bend
 Defl.= 43° 54' 46"

Prop. 2 1/2" Domestic Waterline
 See Utility Plan, Sheet No. C303



* PRIOR TO BEGINNING CONSTRUCTION, THE CONTRACTOR SHALL EXCAVATE THE EXISTING 8" WATERLINE AT STATION 0+00.00 TO VERIFY PIPE SIZE, TYPE, FITTINGS, AND HORIZONTAL AND VERTICAL LOCATION. THE CONTRACTOR SHALL REPORT HIS FINDINGS TO THE ENGINEER SO THAT ANY NECESSARY PLAN MODIFICATIONS MAY BE MADE. ANY ADDITIONAL LABOR OR MATERIALS NECESSARY TO COMPLETE THE CONNECTION SHALL BE CONSIDERED SUBSIDIARY TO THE PROJECT.

FIRE PROTECTION LINE NO. 1



Sheet 01-12-2010 4:37:04 PM by MJC
 Plot Scale: 1:20 01-12-2010 4:37:30 PM
 0:\2008\09197\Site\DWG\PPW 09197-C305-WLPP1

PRIVATE PROJECT NO. 1499 PPW (607853)



Gossen Livingston
 Architecture
 420 South Emporia
 Wichita, KS 67202
 Tel: (316) 265-9367
 Fax: (316) 265-5646
 Email: architec@gossenlivingston.com



Professional Engineering Consultants, P.A.
 303 SOUTH TORREKA
 WICHITA, KANSAS 67202
 316-262-2691
 FAX 316-262-3003
 www.pac1.com

2009 Gossen Livingston Associates, Inc.
 ALL work herein is the exclusive property of Gossen Livingston Associates, Inc. and is not to be copied or used in any way without the express written consent of Gossen Livingston Associates, Inc. All drawings, specifications, sizes, designs and arrangements appearing herein constitute the original and unpublished work of:
 Gossen Livingston Associates, Inc.

FIRE TRAINING ACADEMY
CITY OF WICHITA FIRE DEPARTMENT
WICHITA, KS

REV 5/01/05/10	ADDENDUM 4
REV 3/12/15/09	ADDENDUM 2
REV 2/11/20/09	PLAN REVIEW COMMENTS
REV 1/10/22/09	PLAN REVIEW COMMENTS / ISSUE TO BID

WATERLINE PLAN/PROFILE

Job No. 1036.300
 Date 09/24/09
 Drawn SAW
 Checked JEH

C305