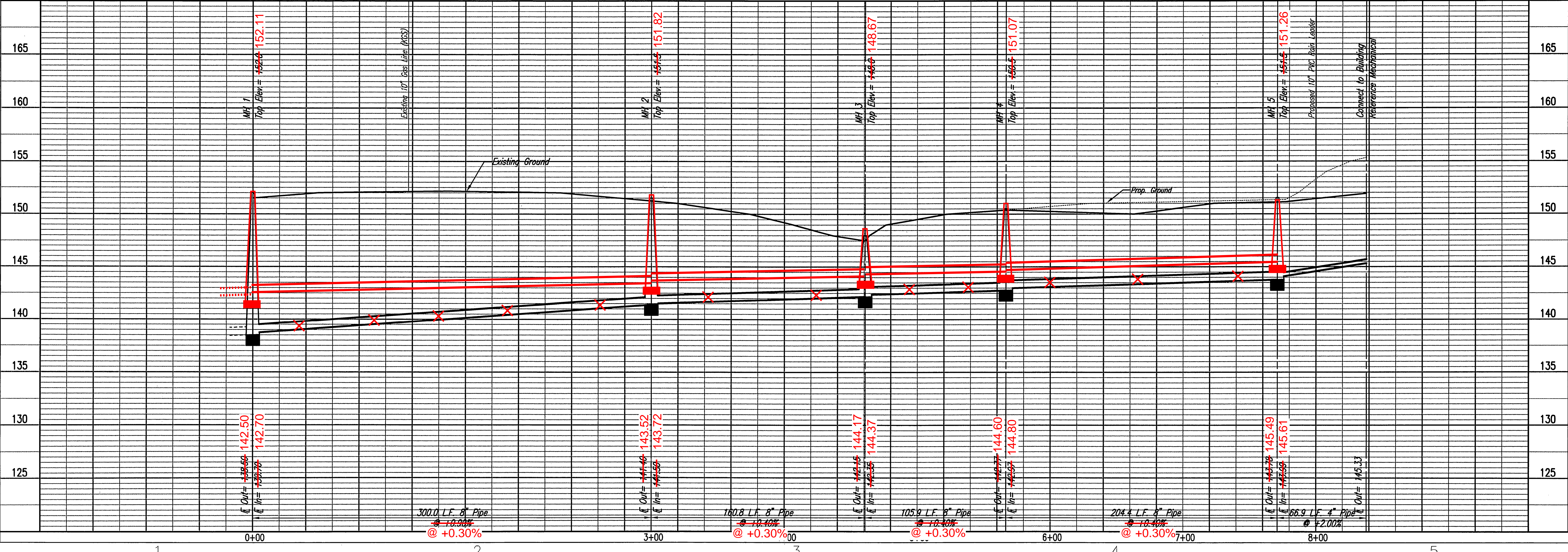


* PRIOR TO BEGINNING CONSTRUCTION, THE CONTRACTOR SHALL EXCAVATE THE EXISTING 8" PVC PIPE AT SANITARY STATION 0+00.0 TO VERIFY ITS HORIZONTAL AND VERTICAL LOCATION. THE PIPE LOCATION SHALL BE REPORTED TO THE ENGINEER SO THAT ANY NECESSARY PLAN MODIFICATIONS CAN BE MADE. ANY ADDITIONAL LABOR OR MATERIALS NECESSARY TO COMPLETE THE CONNECTION SHALL BE CONSIDERED SUBSIDIARY TO THE PROJECT.

SANITARY SEWER LINE NO. 1



GossenLivingston
 Architecture
 420 South Emporia
 Wichita, KS 67202
 Tel: (316) 265-9367
 Fax: (316) 265-5646
 Email: architects@gossenlivingston.com



Professional Engineering Consultants, P.A.
 303 SOUTH TOPPEKA
 WICHITA, KANSAS 67202
 316-262-2691
 FAX 316-262-3003
 www.pec1.com

2009 GossenLivingston Associates, Inc.

All work herein is the exclusive property of Gossen Livingston Associates, Inc. and is not to be copied or used in any way without the express written consent of Gossen Livingston Associates, Inc. All drawings, specification, ideas designs and arrangements appearing herein constitute the original and unpublished work of:
 Gossen Livingston Associates, Inc.

FIRE TRAINING ACADEMY
CITY OF WICHITA FIRE DEPARTMENT
WICHITA, KS

REV 5/01/05/10	ADDENDUM 4
REV 3/12/15/09	ADDENDUM 2
REV 2/11/20/09	PLAN REVIEW COMMENTS
REV 1/10/22/09	PLAN REVIEW COMMENTS / ISSUE TO BID

SANITARY SEWER PLAN / PROFILE

Job No. 1036.300
 Date 09/24/09
 Drawn SAW
 Checked JEH

C204

Saved 01-12-2010 4:08:14 PM by MJC
 Plot Scale 0'-12-2010 4:08:37 PM
 0:2009/09/17/Site Civil/PS & PW TO CITY/PS/091917-C204-SSP1

PRIVATE PROJECT NO. 2001 PPS (607861)