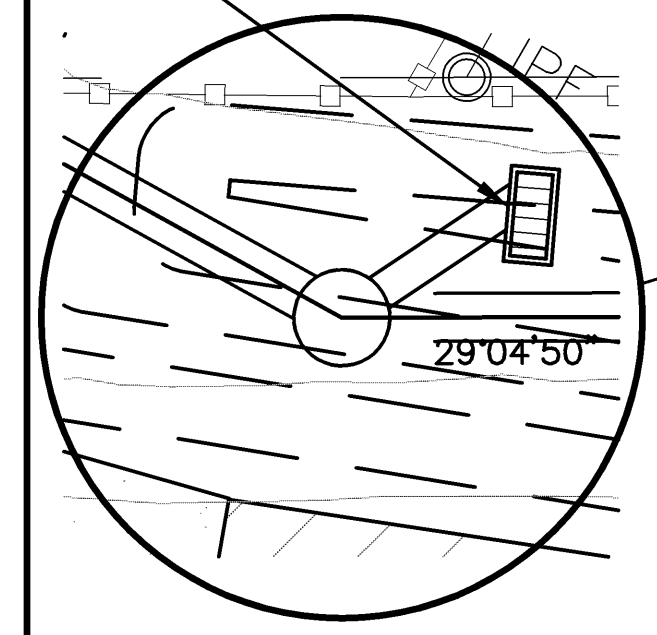


STA. 51+74.35; CONST.
4' x 2' DROP INLET 4.6' LT.
INSTALL 18"x10' L.F. RCP (N)



STA. 50+00.00; INSTALL
FLAP GATE FOR 24" PIPE
INSTALL 24"x165 L.F. RCP (E)
N 170957.373 E 1842212.161
S 88°54'45" W

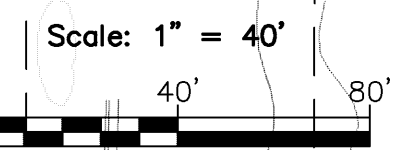
STA. 51+67; CONST. 5' DIA
MANHOLE TYPE P (STANDARD)
INSTALL 24"x180 L.F. RCP (NE)

STA. 58+00; CONSTRUCT
END SECTION FOR POND OUTLET
STRUCTURE. SEE DETAIL SHEET C17
INSTALL 10 S.Y. 12" RIP RAP
N 1709959.41 E 1642722.02

STA. 53+50; CONST.
4'X2' DROP INLET
INSTALL 24"x 48 L.F.
RCP (NE)

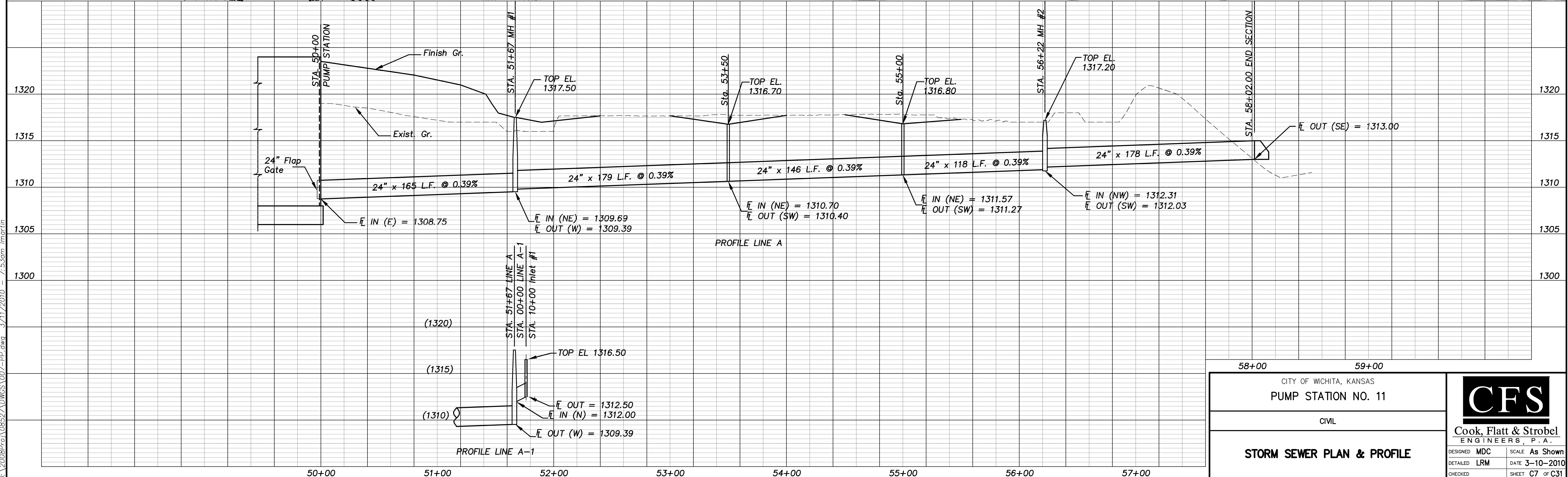
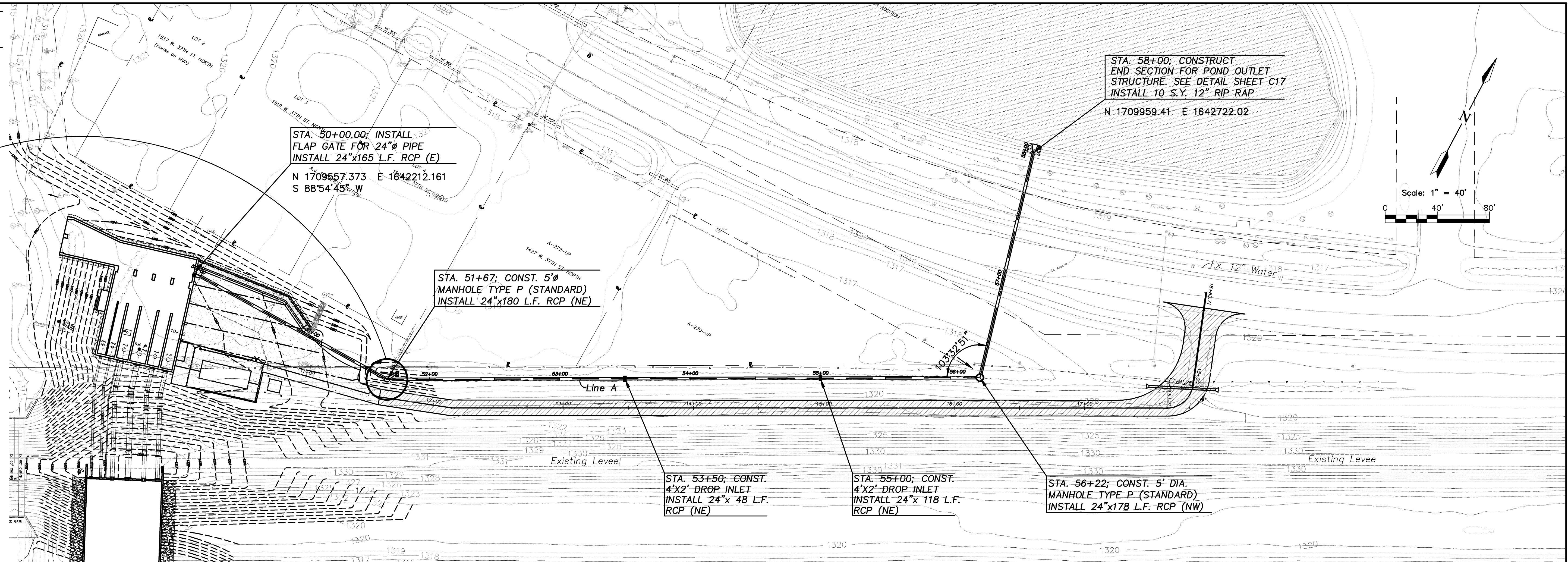
STA. 55+00; CONST.
4'X2' DROP INLET
INSTALL 24"x 118 L.F.
RCP (NE)

STA. 56+22; CONST. 5' DIA.
MANHOLE TYPE P (STANDARD)
INSTALL 24"x178 L.F. RCP (NW)



PROFILE
DATE _____
BY _____
SUPERVISOR _____
NOTE BOOK _____
ALIGNMENT CHECKER _____
RT. OF WAY CHECKER _____
NO. _____

PROFILE
DATE _____
BY _____
SUPERVISOR _____
NOTE BOOK _____
GRADES CHECKER _____
RAV'S NOTES _____
STRUCTURE INITIALS CHECKED _____
3/11/2010 - 7:53am jmartin



CITY OF WICHITA, KANSAS		CFS Cook, Flatt & Strobel ENGINEERS, P.A.
PUMP STATION NO. 11		
CIVIL		DESIGNED MDC SCALE As Shown
STORM SEWER PLAN & PROFILE		Detailed LRM DATE 3-10-2010
		CHECKED _____ SHEET C7 OF C31