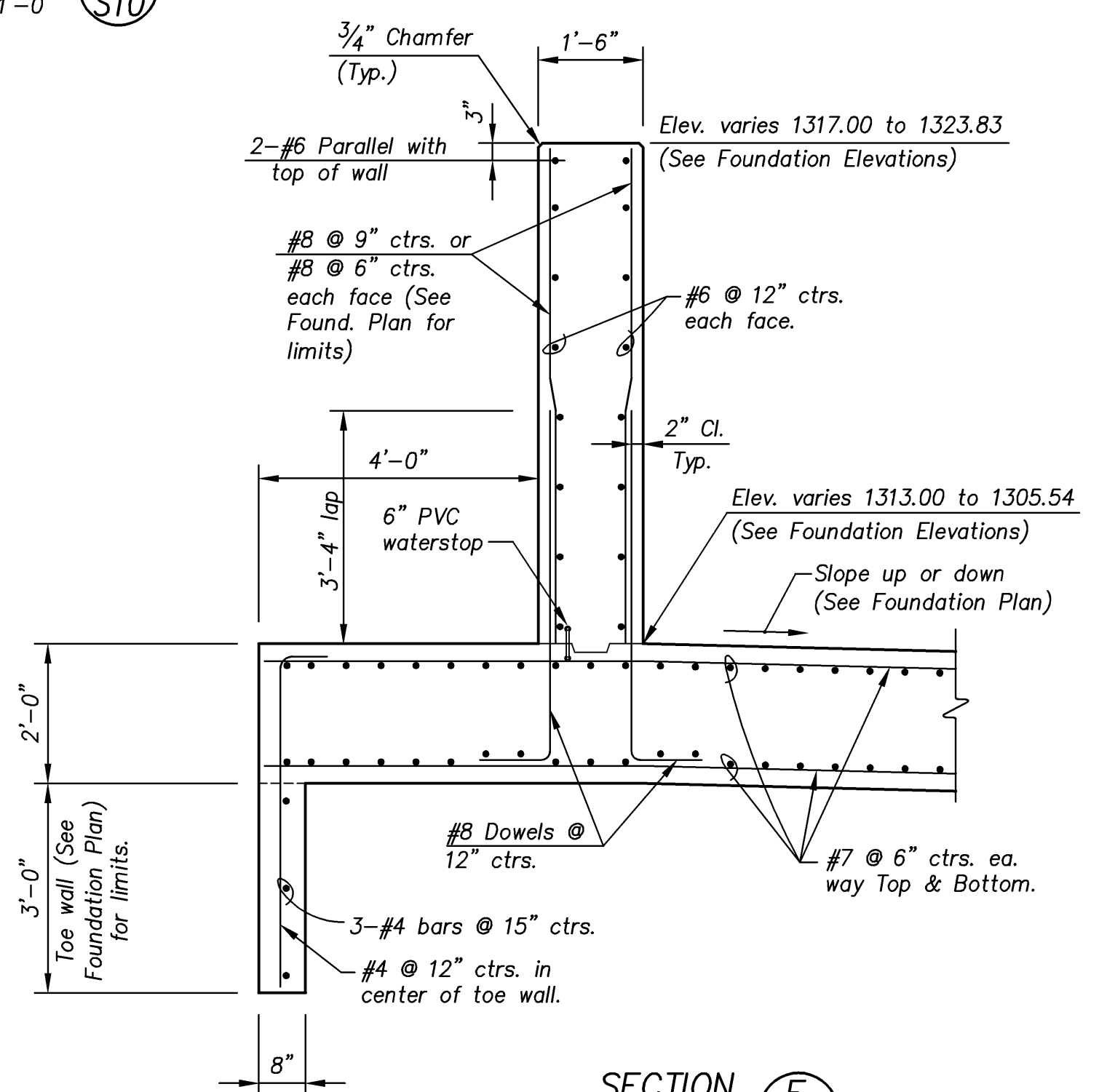
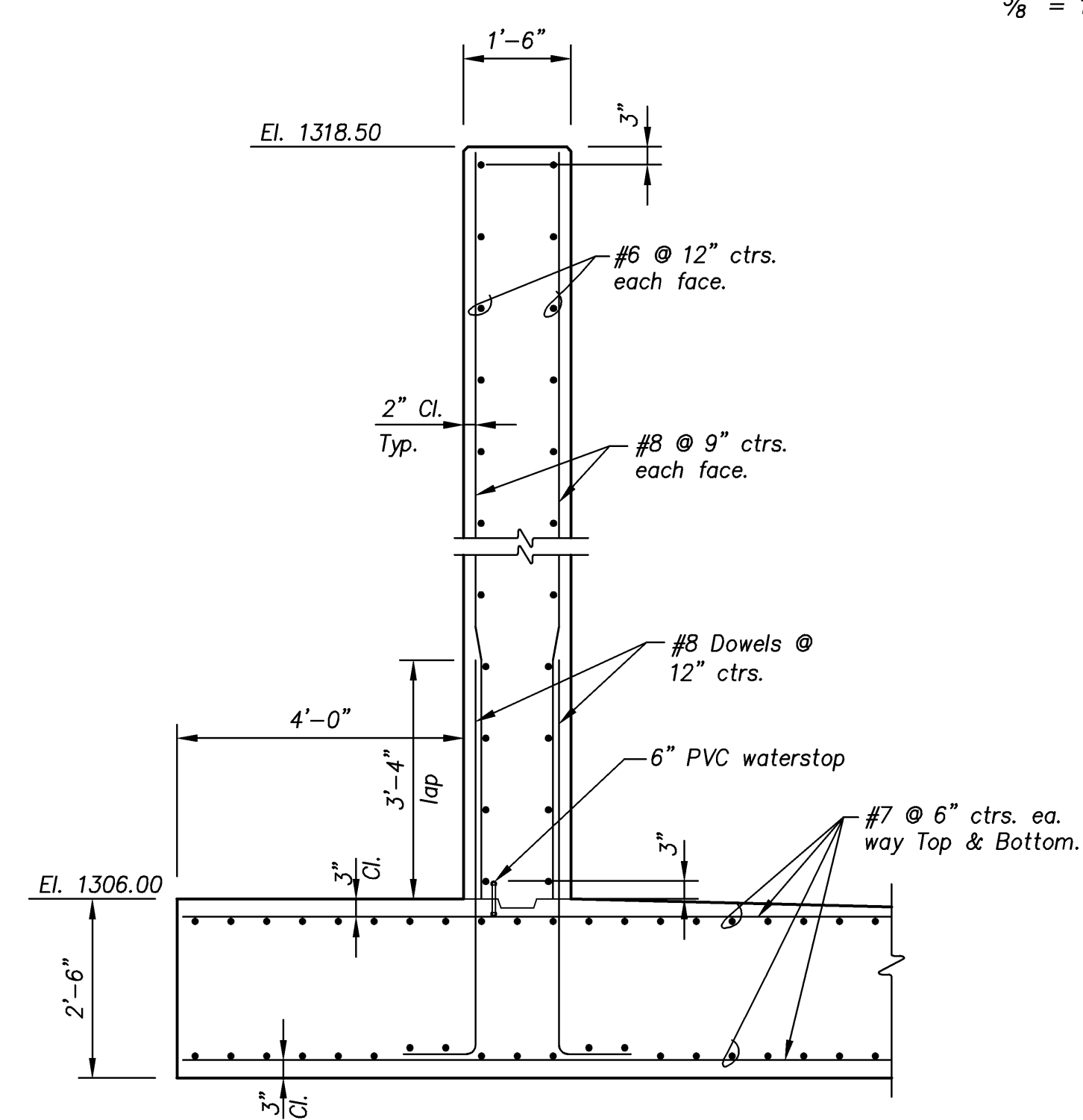
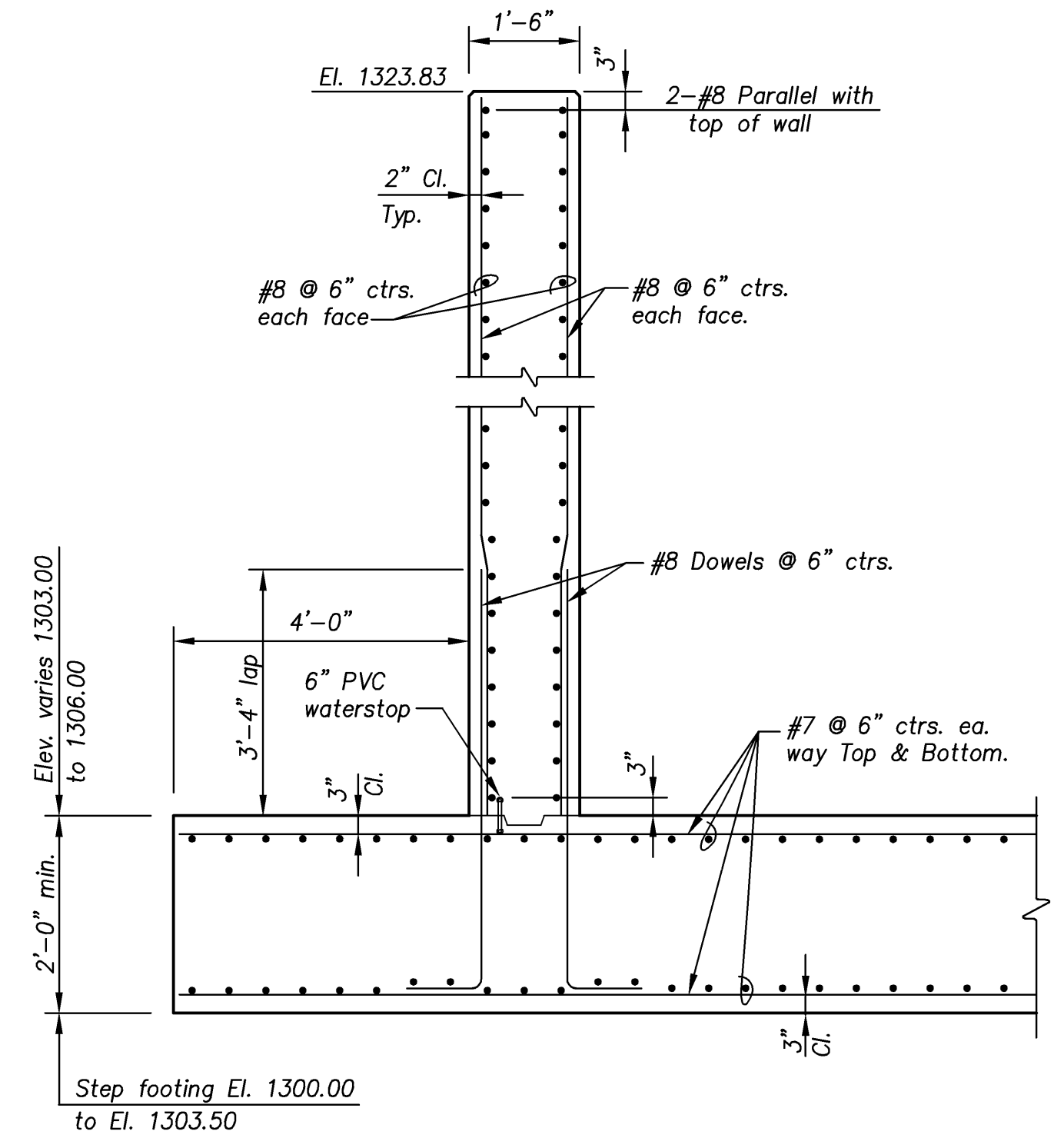
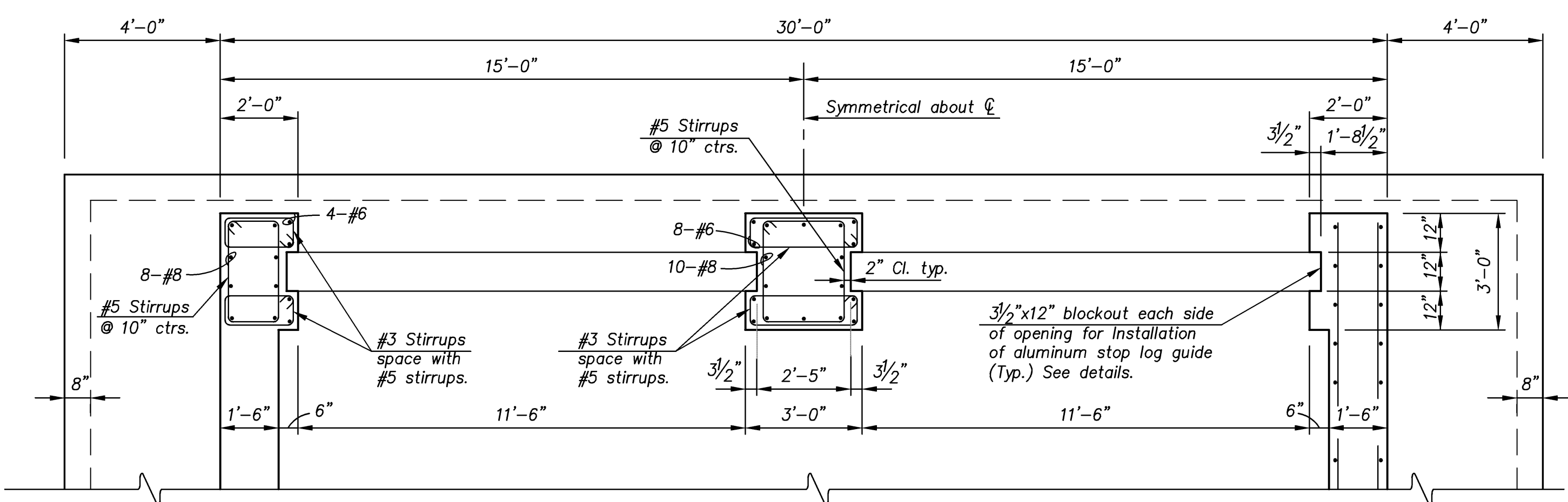


ALUMINUM STOP LOGS NOTES:

- Manufacturer:  
 • Hydro Gate or approved equal.
- General:  
 • Aluminum stop logs shall be of the size and mounting type shown on the drawings and specified herein. Log design shall be such that the flexural stresses do not exceed 1/5 of ultimate strength or 1/3 of yield strength. Design flexural stress of aluminum shall not exceed 8,400 psi.
- Materials of Construction:  
 • Stop log and slot extrusions shall be Aluminum (6061-T1)
- Seals:  
 • Neoprene D2000 grade 1BE625
- Guide Bars:  
 • Ultra-High Molecular Weight (UHMW) Polyethylene
- Hooks & Fasteners:  
 • Stainless steel, ASTM A276, Type 304
- Seals:  
 • Seals shall be permanently attached to sides and bottom of each channel. Seal shall be formed all around the waterway channel and between each stop log panel.
- Sill:  
 • Sill constructed from stainless steel plate shall be provided. It shall be adjustable-mounted to provide flat level seal surface prior to grouting. Finish shall be mill finish. Alternatively, flat level concrete invert surface may be provided. Flatness shall be within 1/8 in. in 10 ft. of length.
- Slots:  
 • Slots shall be one-piece extrusion suitable for embedment or mounting on channel wall surfaces. Surface shall be mill finish.



CITY OF WICHITA, KANSAS		<b>CFS</b> Cook, Flatt & Strobel ENGINEERS, P.A.
PUMP STATION NO. 11		
STRUCTURAL		DESIGNED KMB   SCALE As Shown
PUMP STATION		DATE 10-30-09
FOUNDATION SECTIONS		CHECKED HAP   SHEET S10 OF S17

J:\2008Proj\08527\DWG\Structural\DWG\S10-511 FD Sec 11/10/2009 - 1:51pm hphum