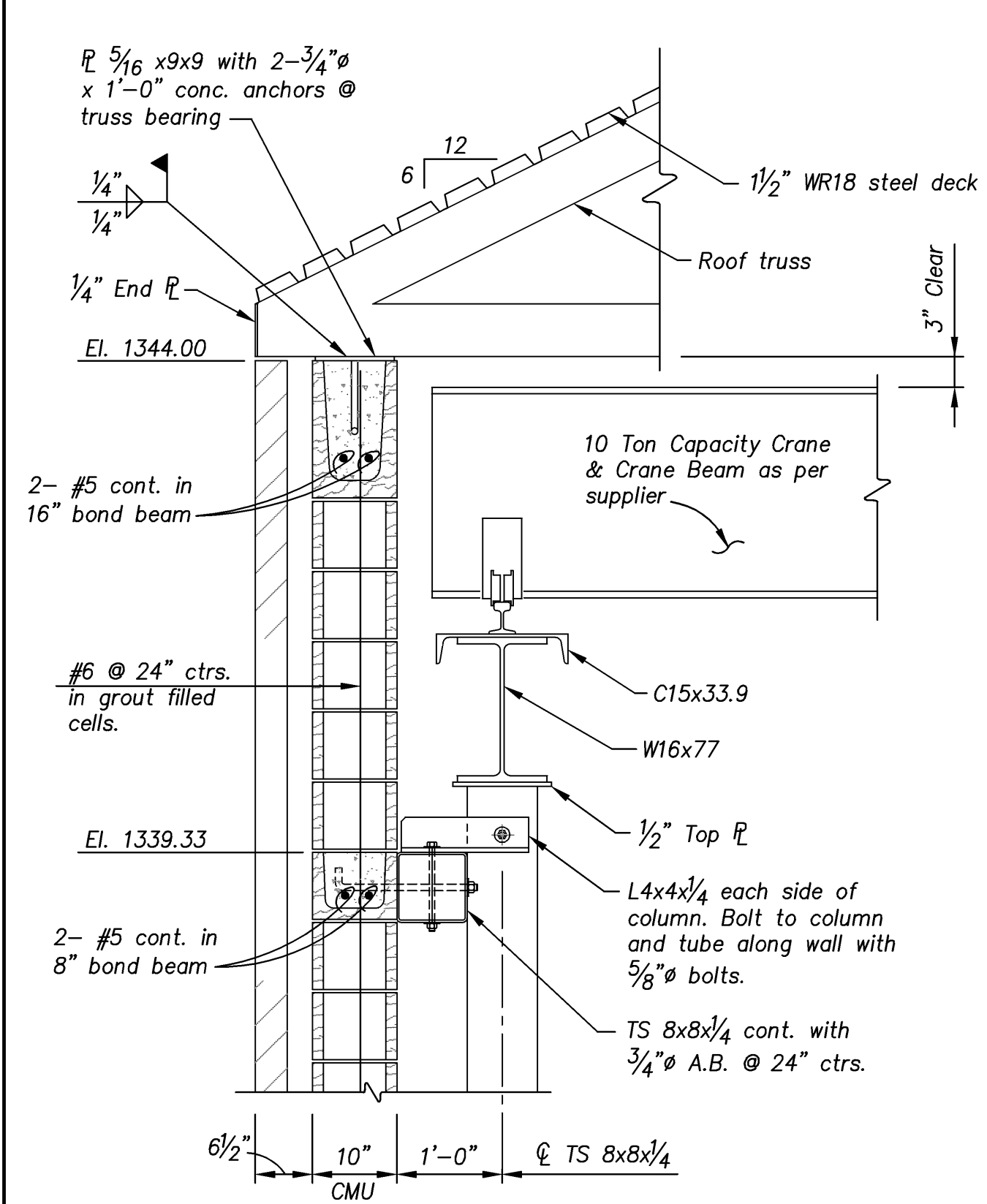
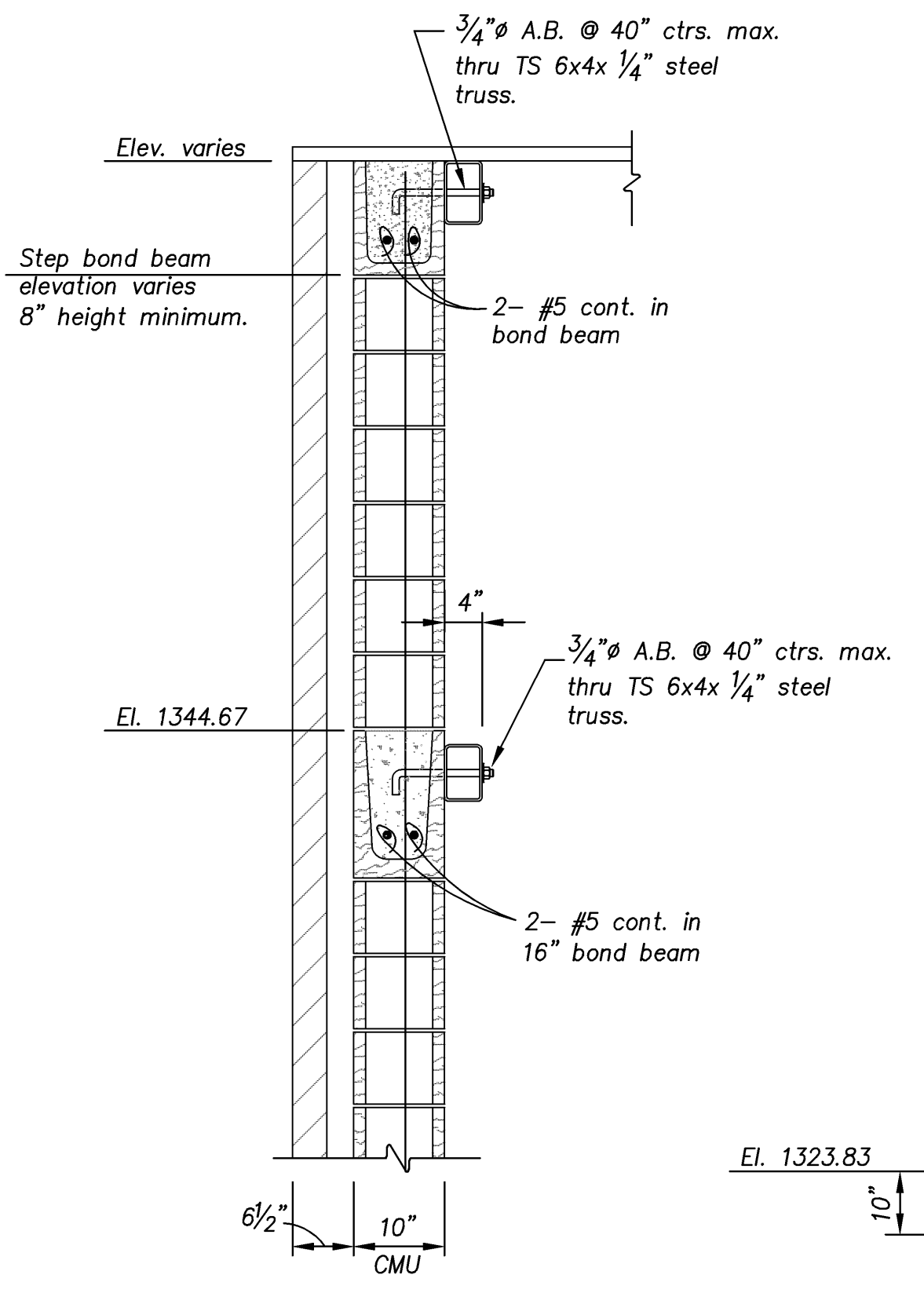


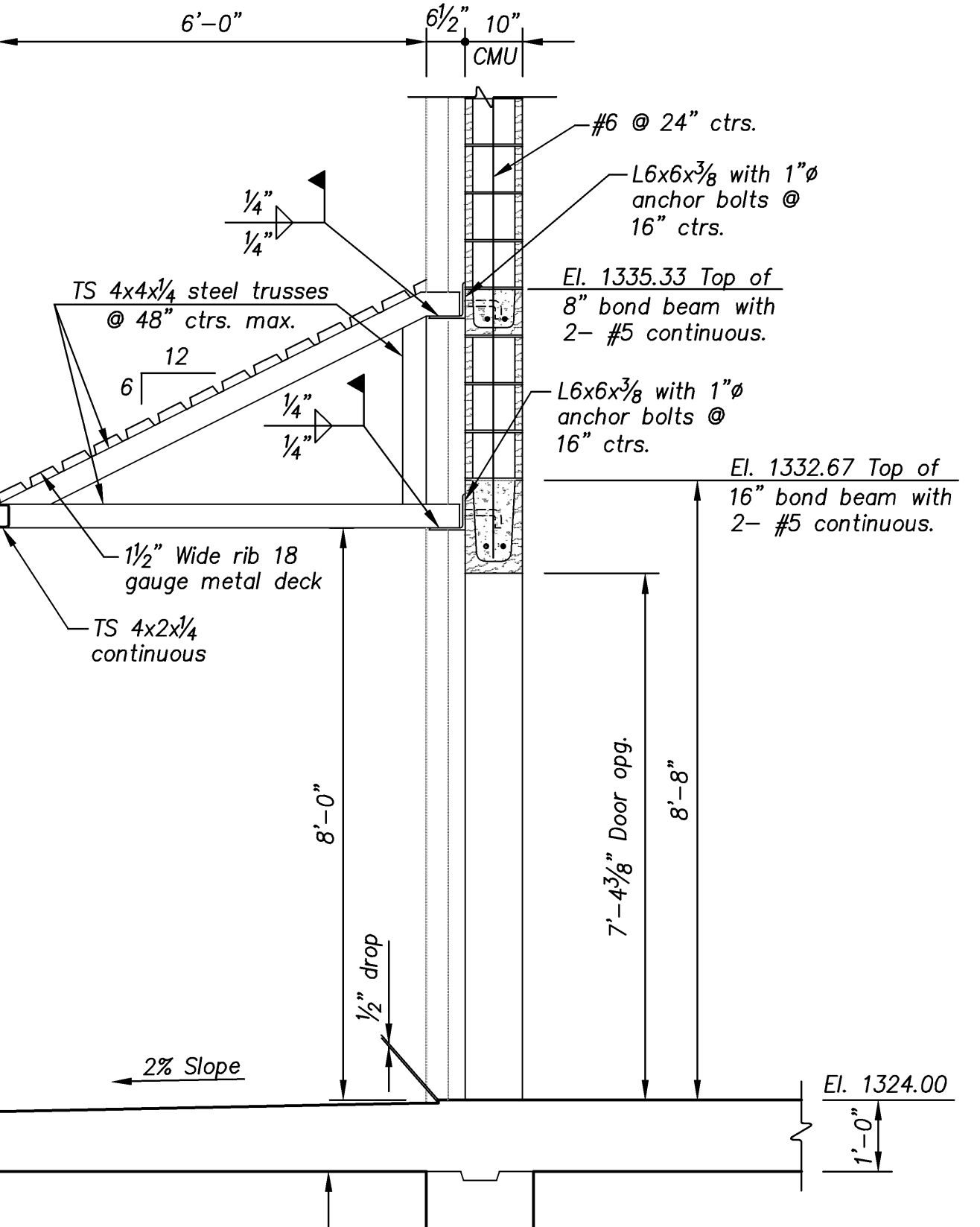
J:\2008Proj\0827\DWG\Structural\DWG\S15 - 11/10/2009 - 1:54pm lpham



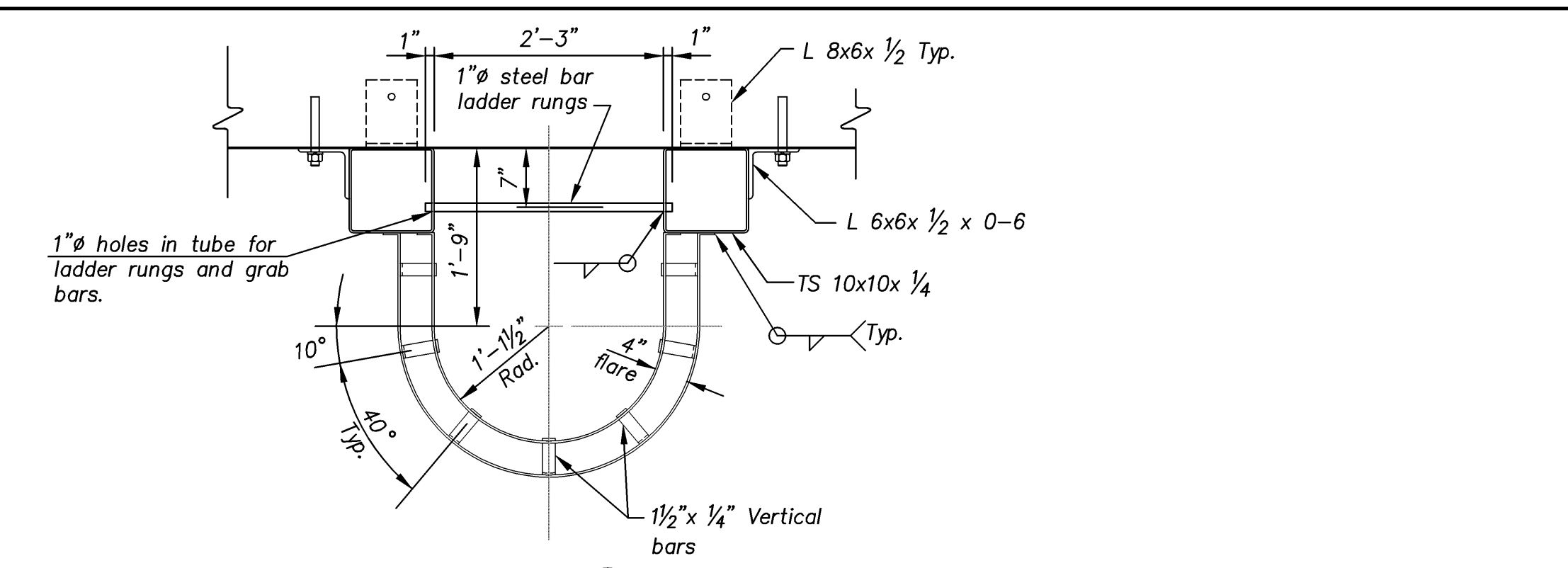
SECTION A
3/4" = 1'-0" S15



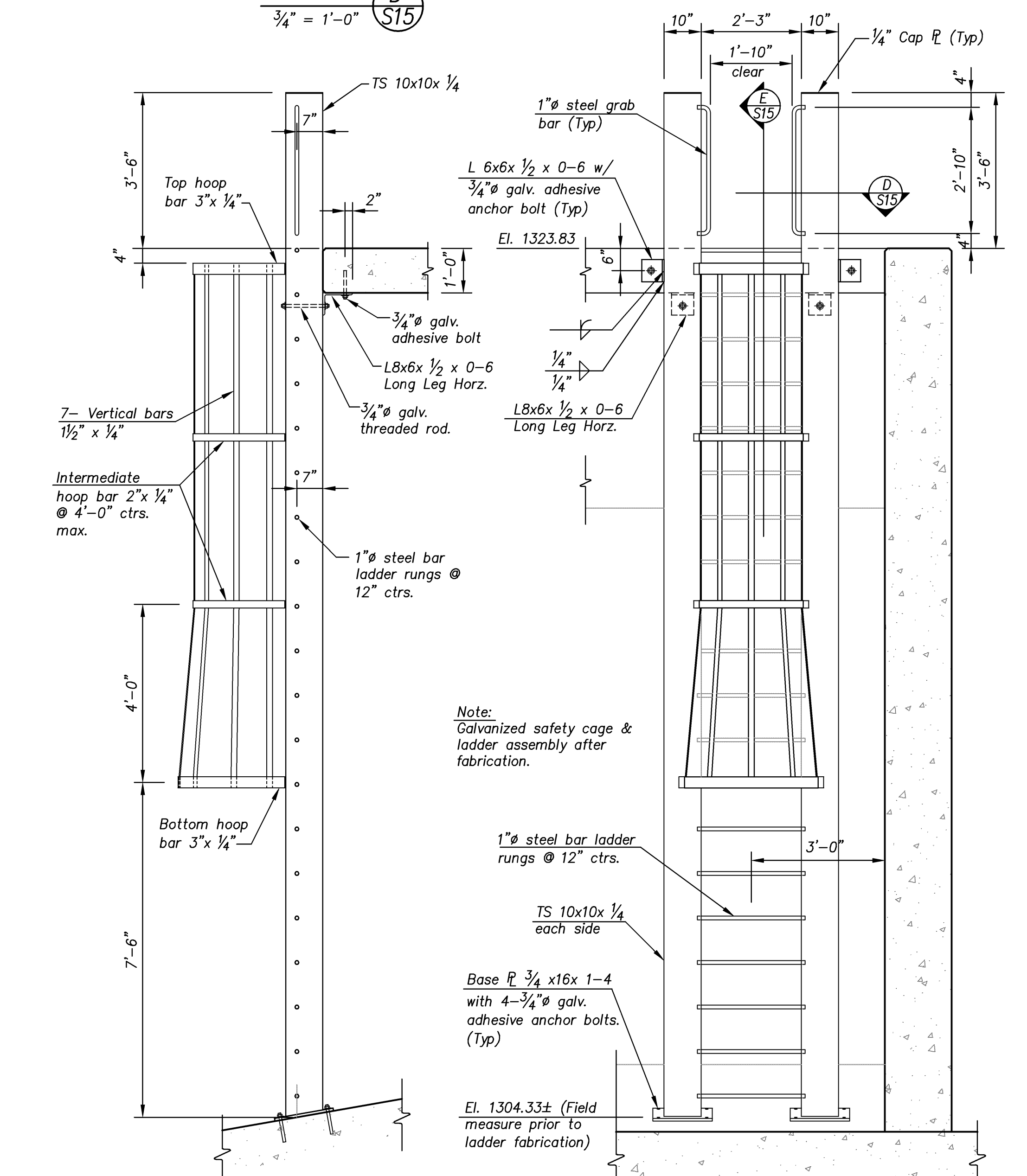
SECTION B
3/4" = 1'-0" S15



SECTION C
1/2" = 1'-0" S15

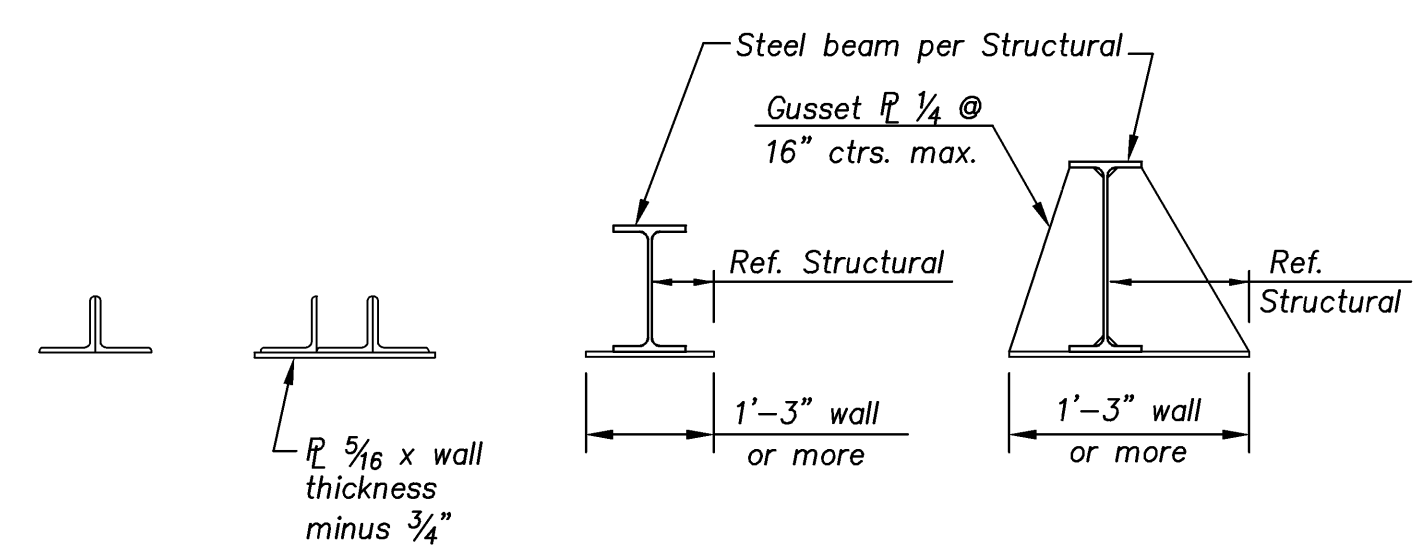


SECTION D
3/4" = 1'-0" S15



SECTION E
1/2" = 1'-0" S15

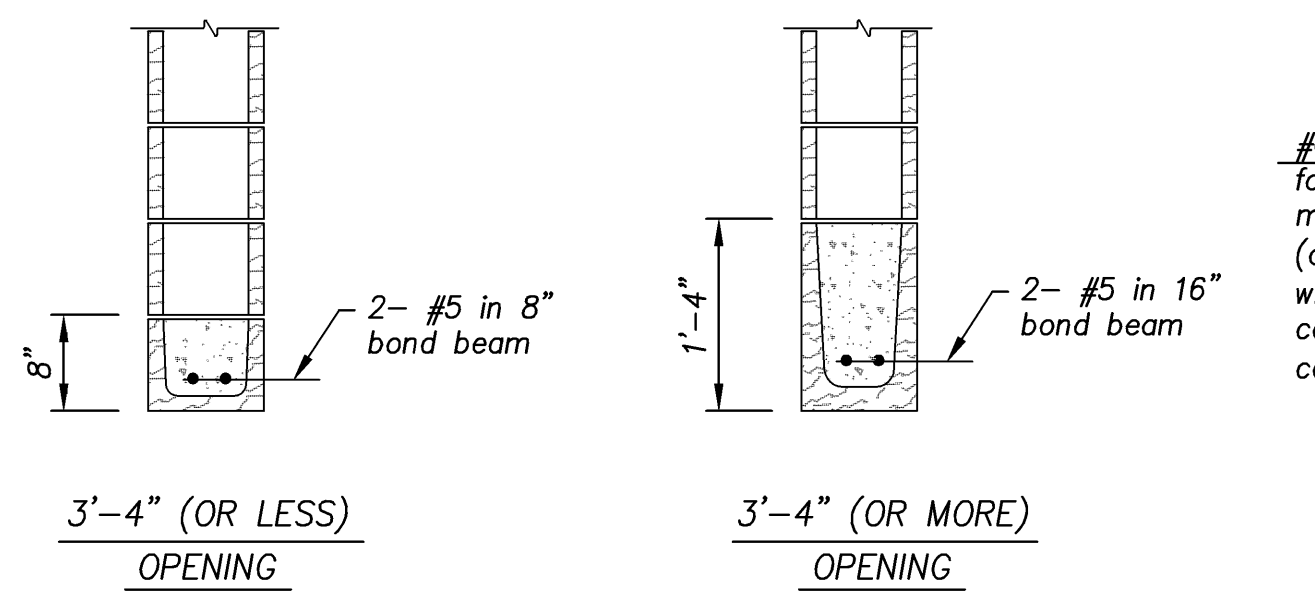
SECTION F
1/2" = 1'-0" S15



3'-4" Opening Maximum	6'-4" Opening Maximum
One L 3 1/2 x 3/2 x 5/16 for each 4" thick of masonry. For wall thicker than 8", provide steel R 5/16 x wall thickness minus 3/4" to bottom of steel angles	One L 5 x 3 x 5/16 for each 4" thick of masonry. For wall thicker than 8", provide steel R 5/16 x wall thickness minus 3/4" to bottom of steel angles

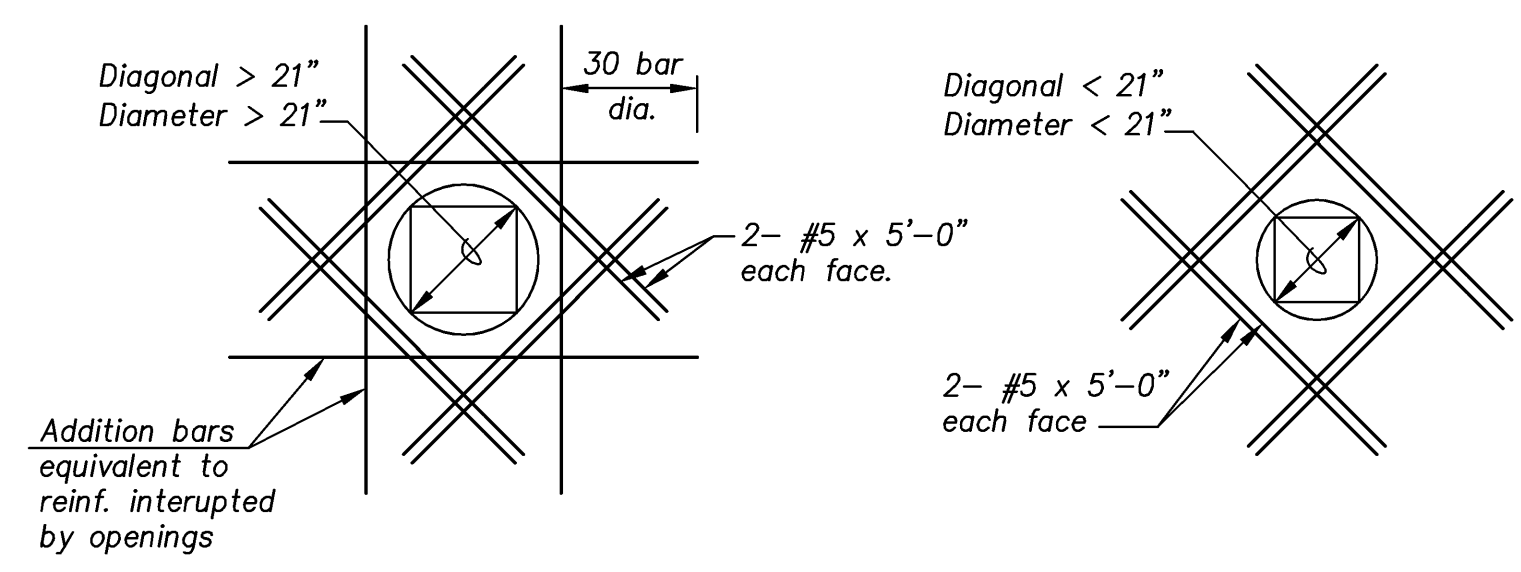
STANDARD STEEL LINTELS

- All lintel members for an opening shall be welded together.
- All lintels shall extend minimum of 8" each side of opening.
- Lintels shall be as stated above except where specifically noted otherwise on structural drawings.
- Provide steel R 5/16 at bottom of all lintels for openings wider than 8".
- For openings wider than 6'-4" ref. structural drawings.
- All lintels shall be galvanized.

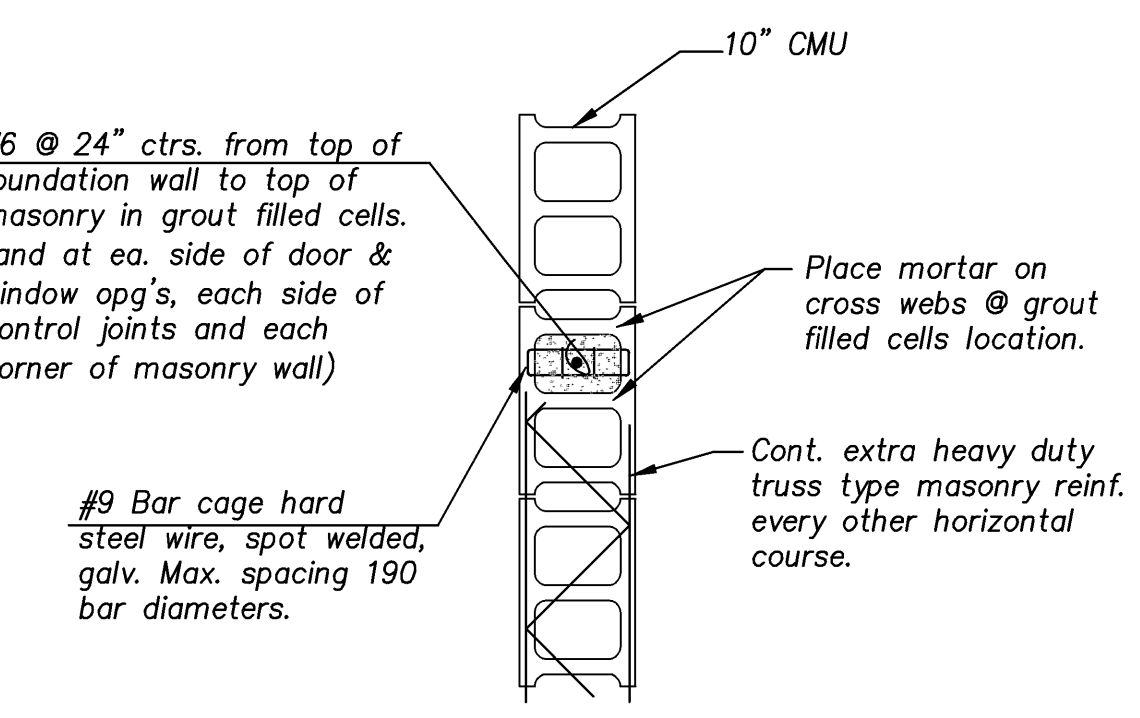


STANDARD MASONRY LINTELS

- For all masonry openings 6'-4" or less, the reinforcing shown above shall be used unless shown on the plans.
- #5 bars shall extend a minimum of 16" beyond the opening in grouted masonry.

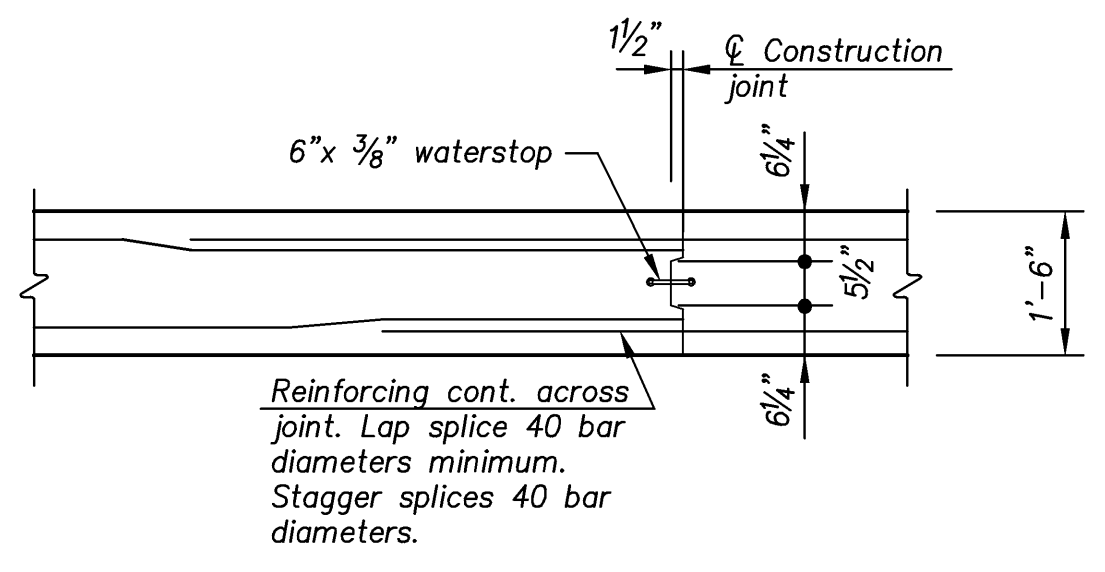


TYPICAL OPENING REINF. DETAIL



TYPICAL MASONRY WALL REINFORCING

Scale: 3/4" = 1'-0"



OPTIONAL VERTICAL CONSTRUCTION JOINT IN WALLS

Note: Galvanized safety cage & ladder assembly after fabrication.

CITY OF WICHITA, KANSAS	
PUMP STATION NO. 11	
STRUCTURAL	
PUMP STATION	
MASONRY & MISCELLANEOUS DETAILS	
DESIGNED KMB	SCALE As Shown
DATE 10-30-09	CHECKED
SHEET S15 OF S17	

