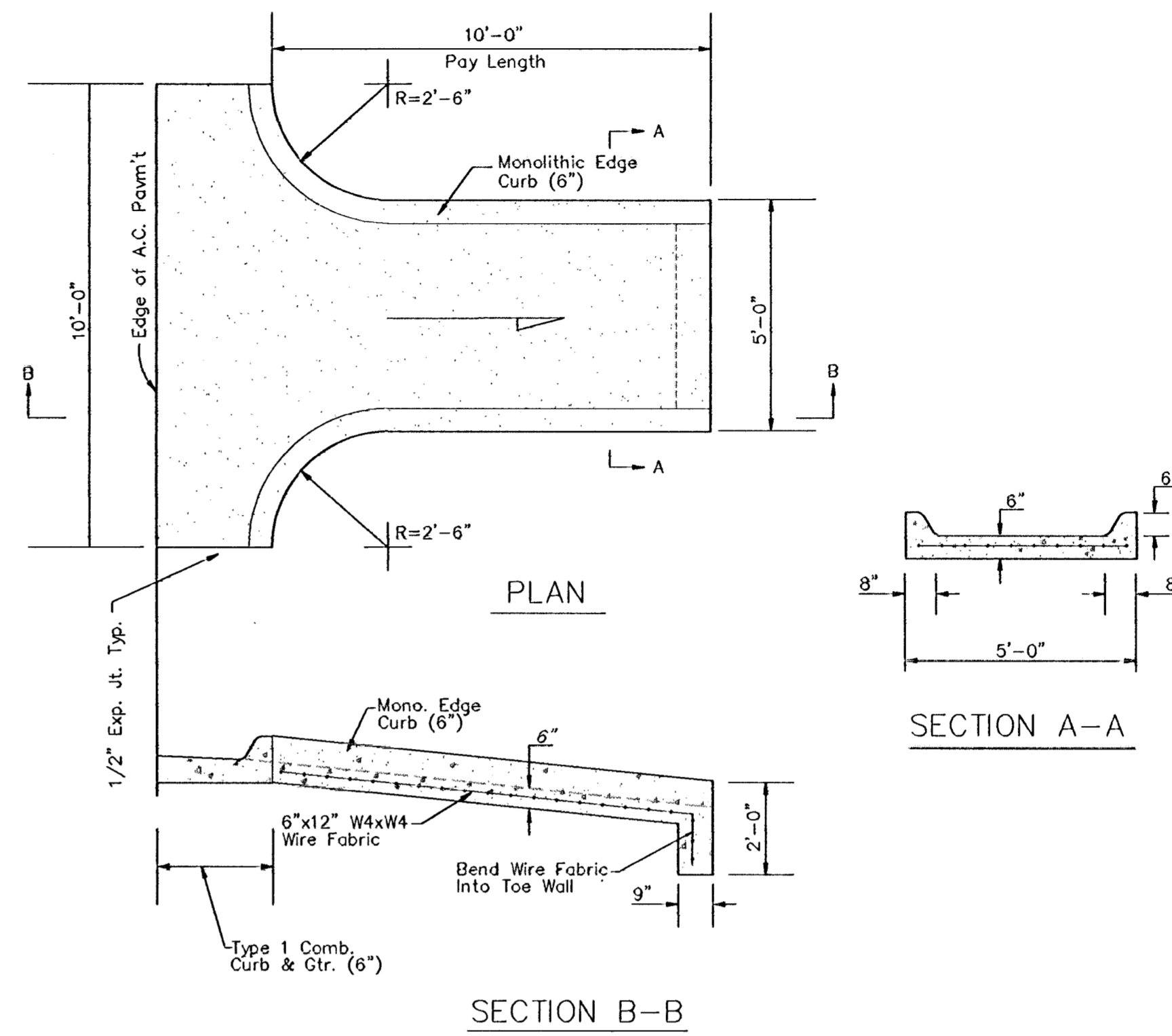
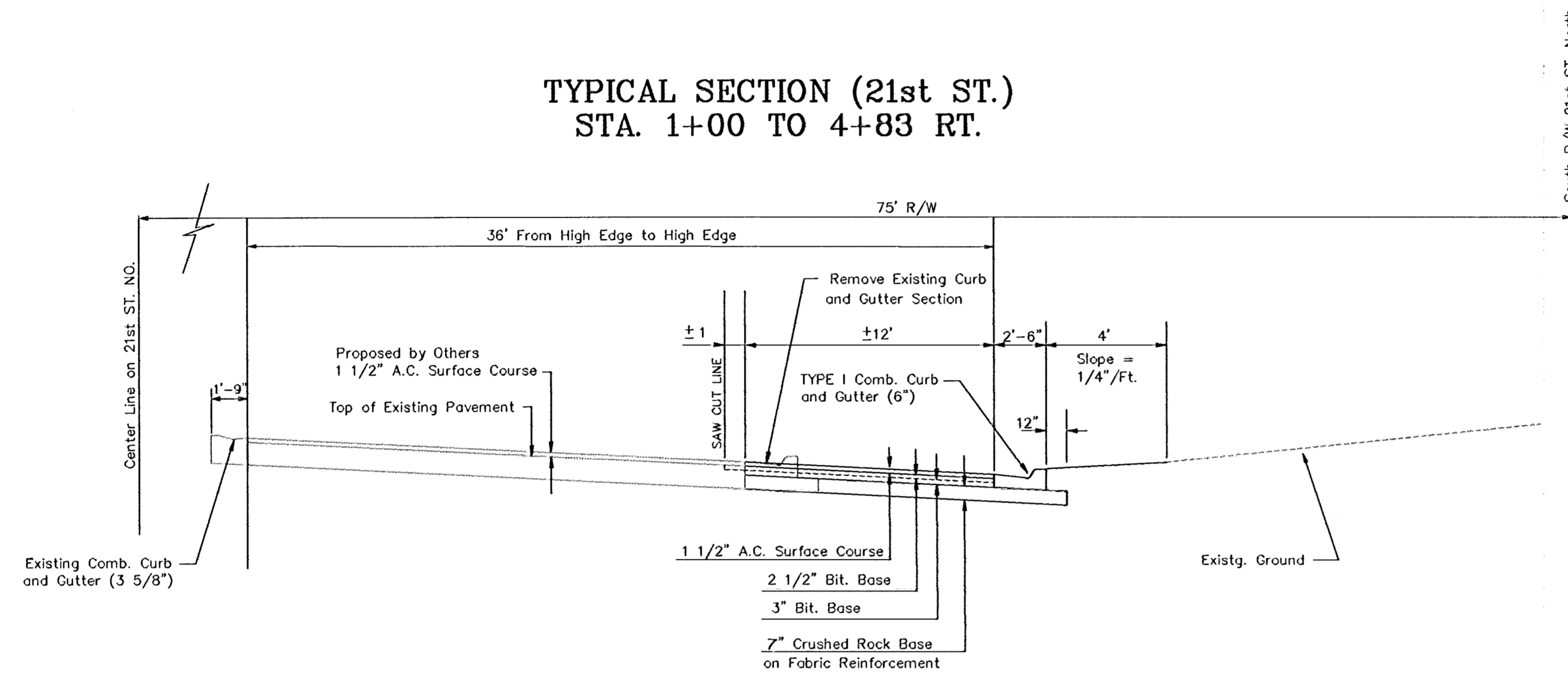


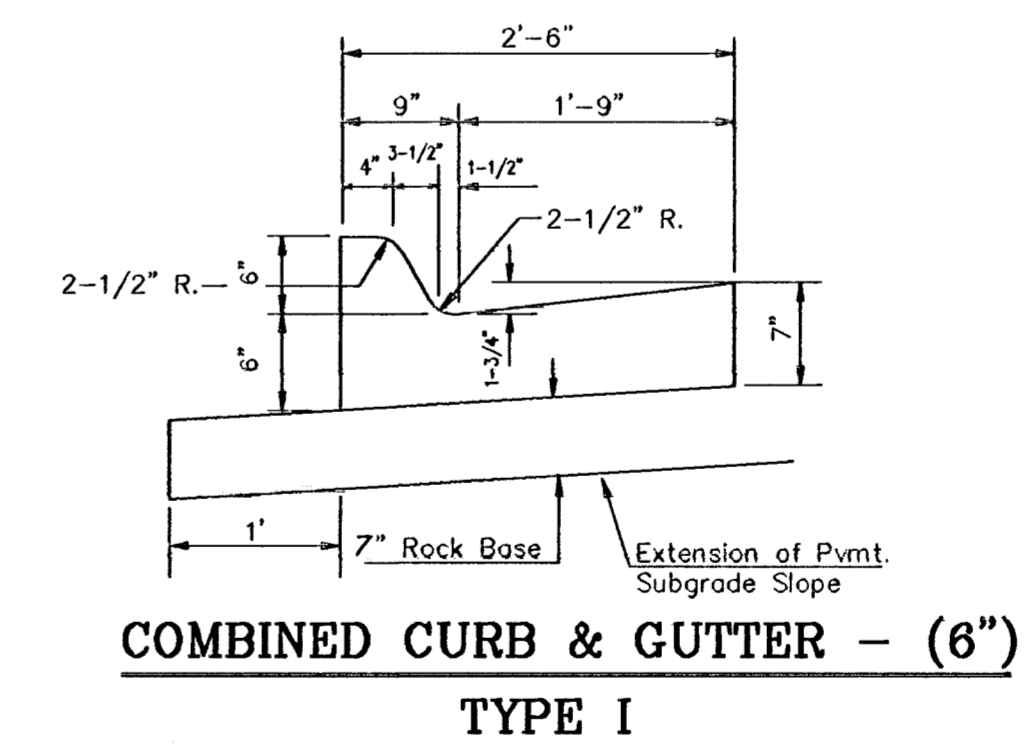
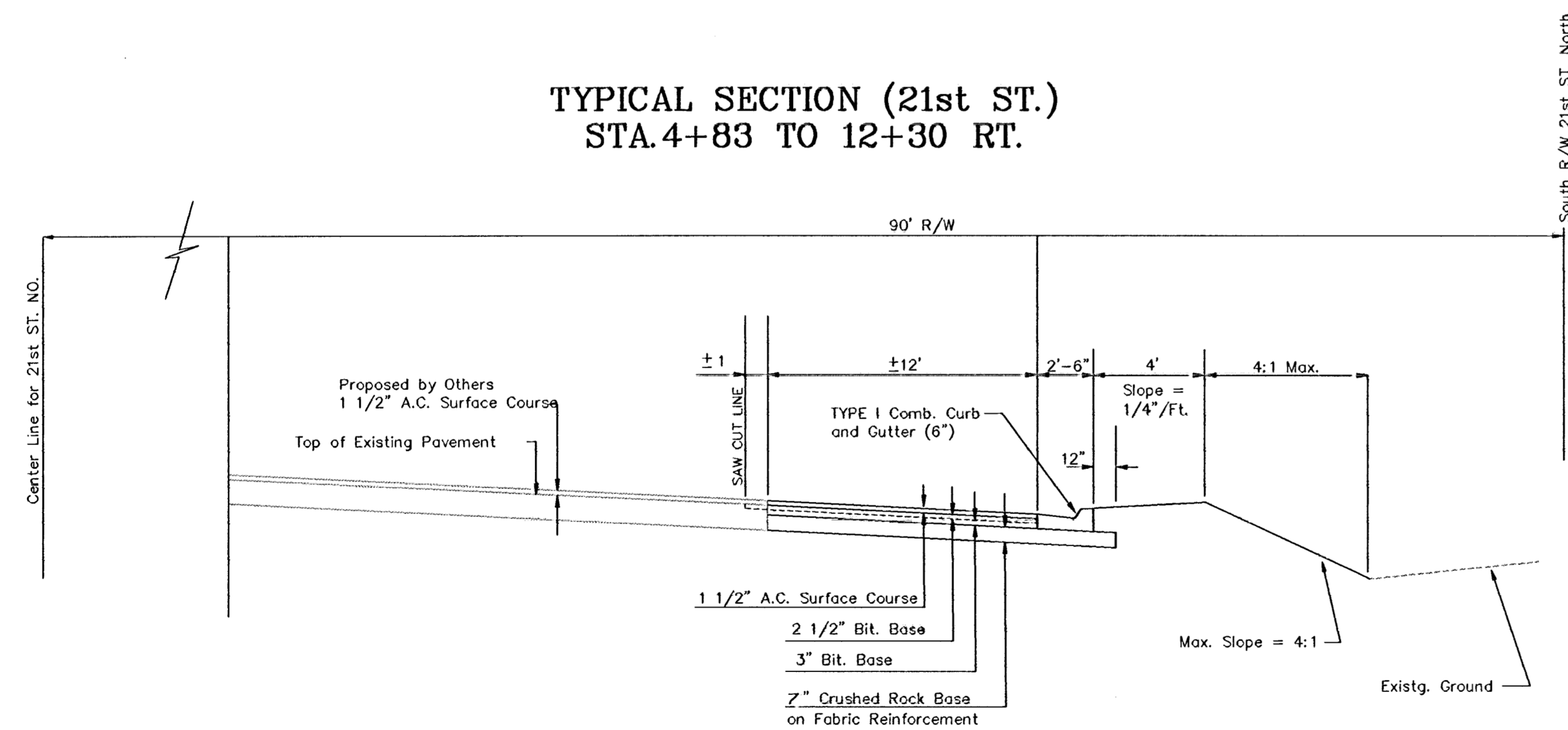


**TYPICAL SECTION (21st ST.)  
STA. 1+00 TO 4+83 RT.**



**CONCRETE SLOPE DRAIN DETAIL**

**TYPICAL SECTION (21st ST.)  
STA. 4+83 TO 12+30 RT.**



**NOTE:**  
The 8\"/>

Sieve Size	% Passing
2-1/2"	100
3/4"	40-80
No. 4	20-50
No. 40	6-20
No. 200	2-10

Rock quality shall conform to the requirements specified by the KDOT 1990 Edition Standard Specification, Subsection 1102 for Durability Class 1

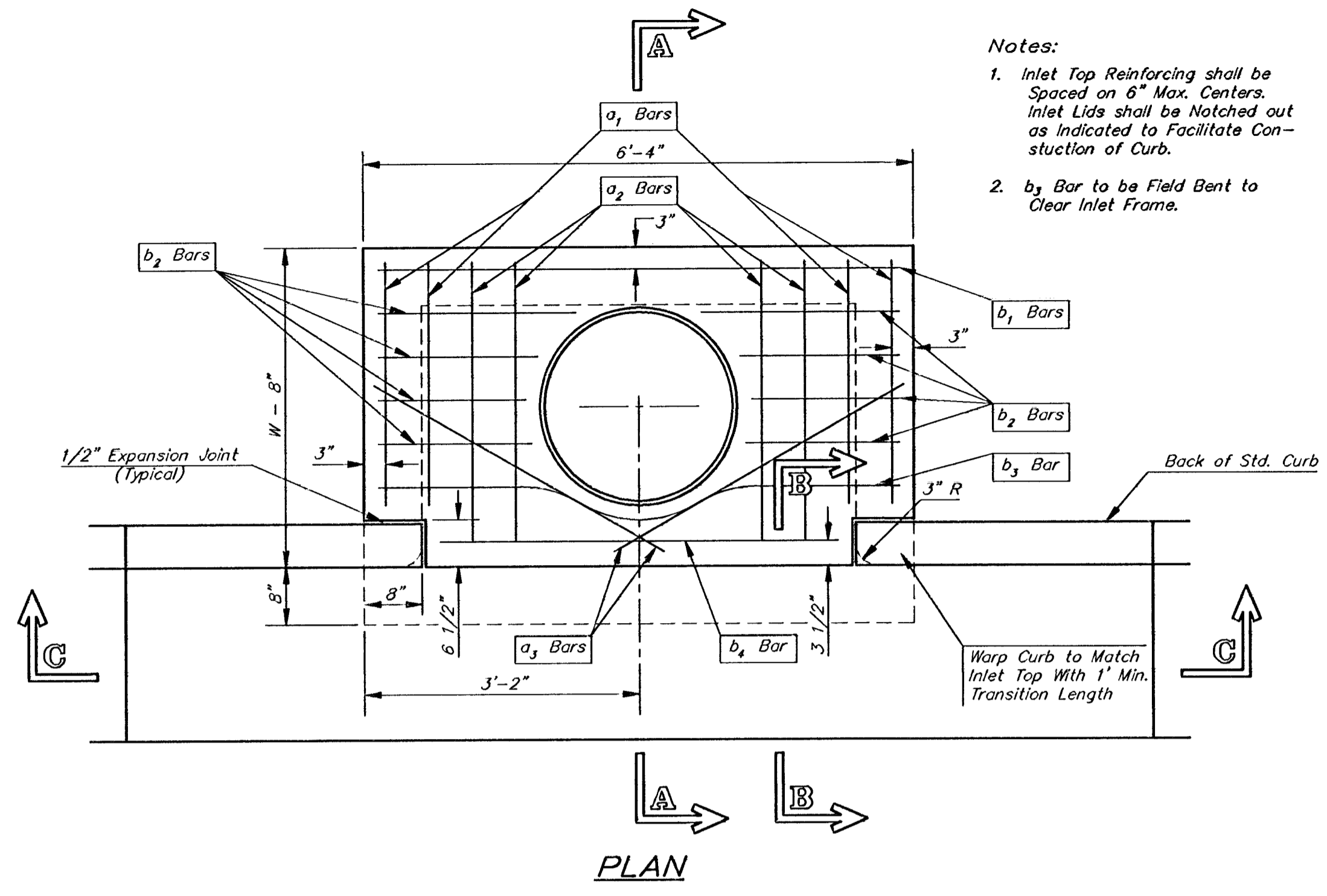
**21 ST. & TYLER RD.**  
ACCEL & DECEL LANE

**BAUGHMAN COMPANY P. A.**  
ENGINEERING, SURVEYING, & PLANNING  
316-262-7271 • 315 ELLIS • WICHITA, KANSAS 67211

PROJECT NUMBER: **472-78-245-81673-000-000-001**

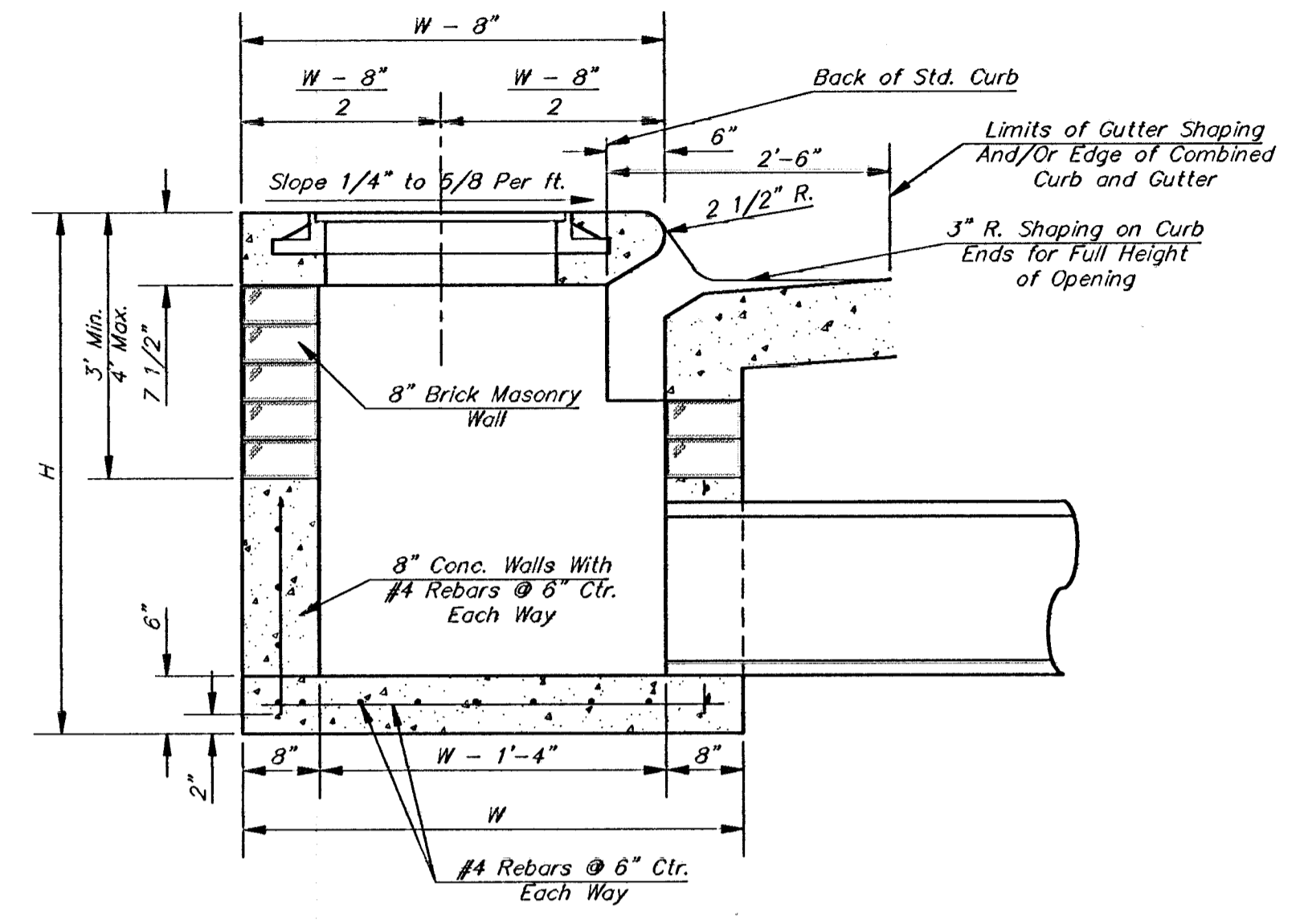
DESIGN	DRAWN RWM	APPROVED	DATE JULY 1995	SCALE NONE	SHEET 2 OF 8
--------	--------------	----------	-------------------	---------------	-----------------------

95-03-E043

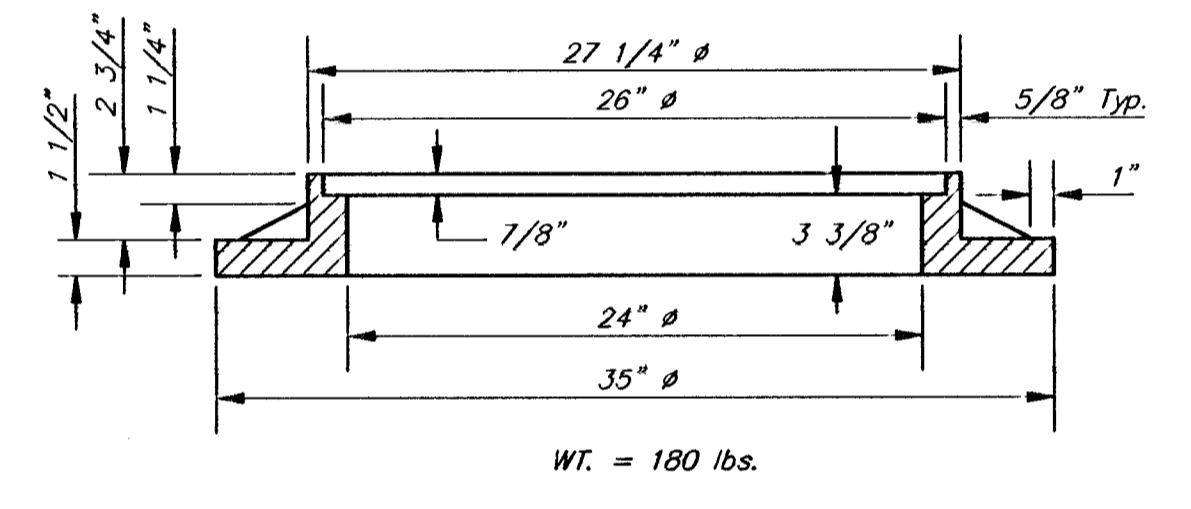
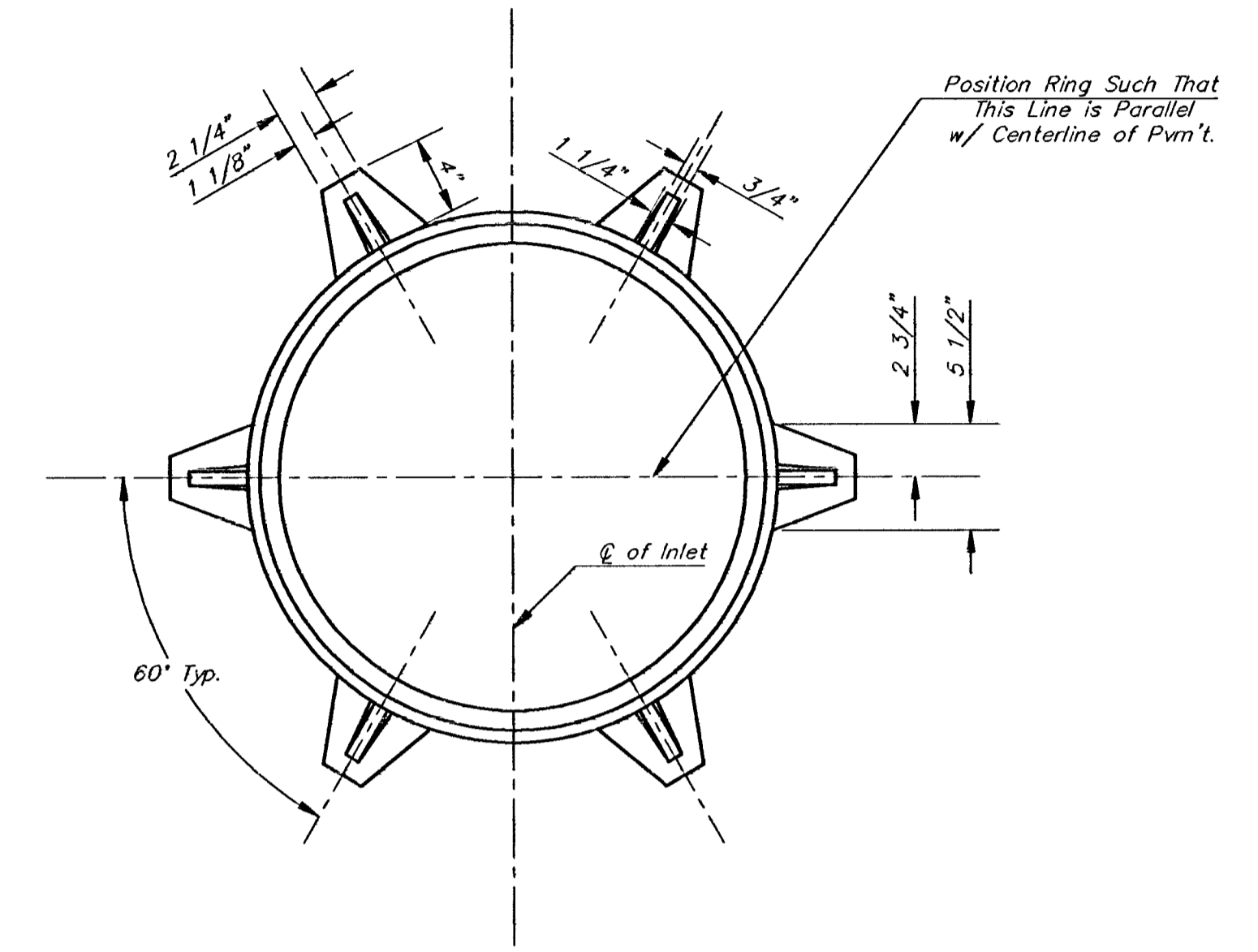


**Notes:**

- Inlet Top Reinforcing shall be Spaced on 6" Max. Centers. Inlet Lids shall be Notched out as Indicated to Facilitate Construction of Curb.
- b<sub>3</sub> Bar to be Field Bent to Clear Inlet Frame.

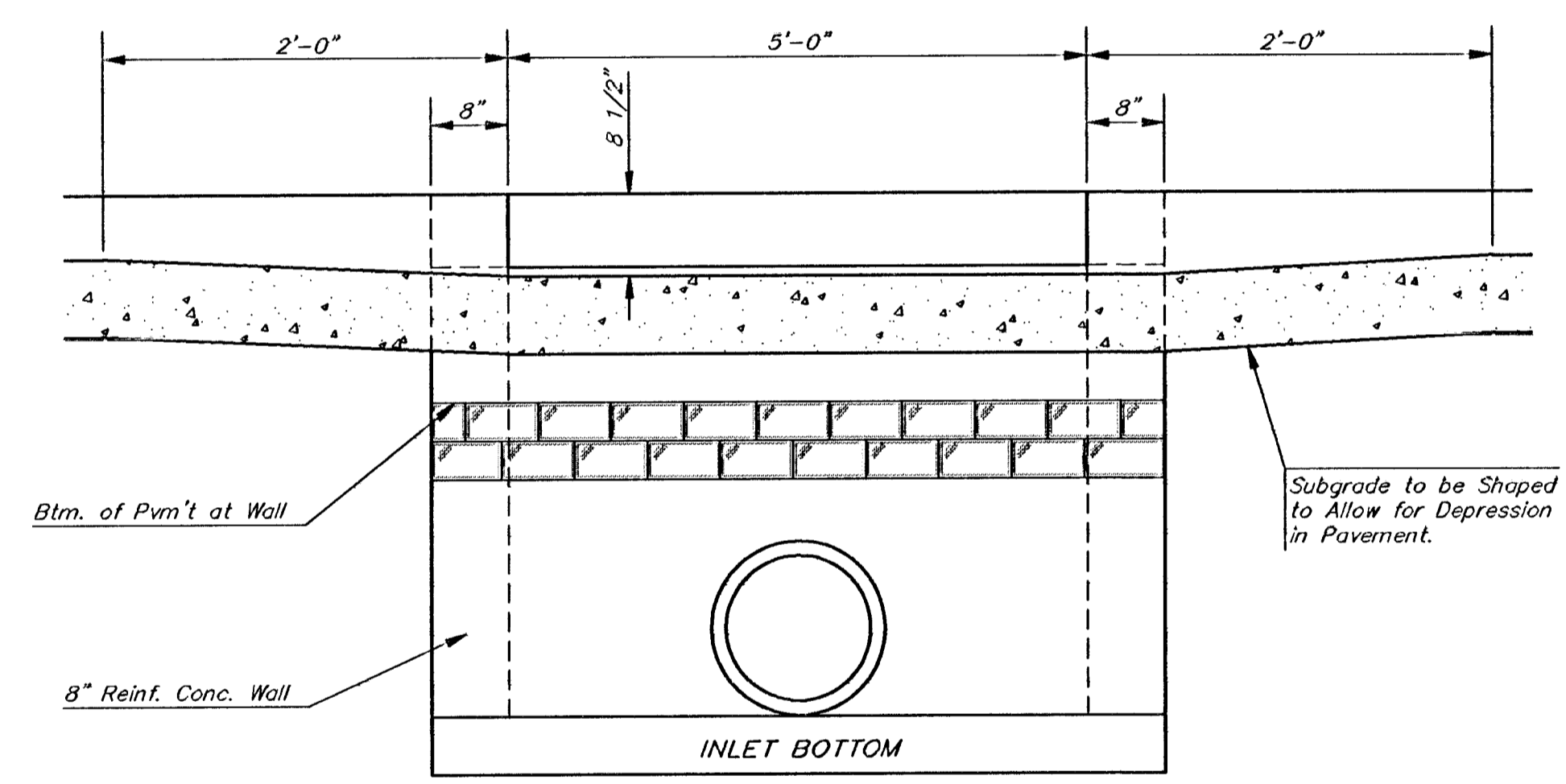


**SECTION A-A**

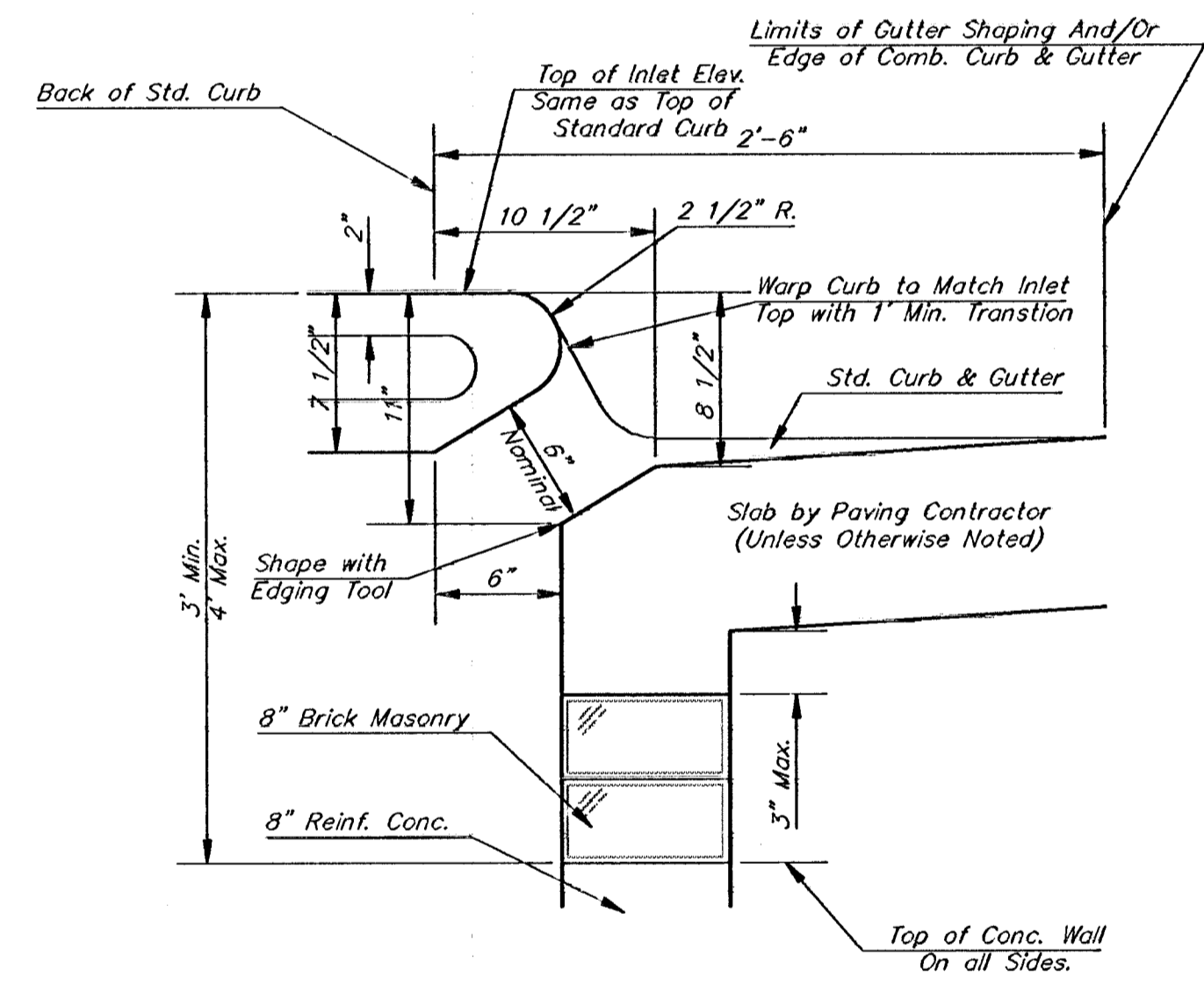


**MANHOLE RING AND COVER**

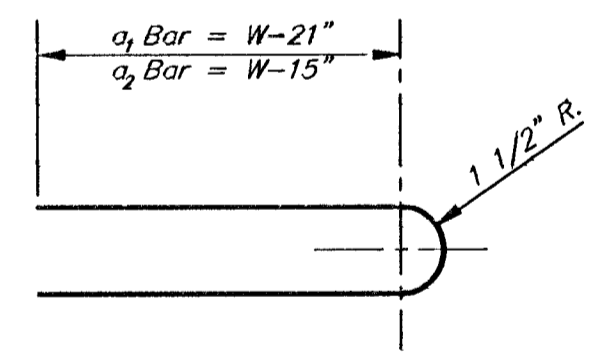
\*See City of Wichita Standard Manhole Ring and Cover Detail Sheet for Cover Details to Be Used With Inlet Frame.



**SECTION C-C**



**SECTION B-B**



**BENDING DIAGRAM**

**STEEL SCHEDULE**

BAR NUMBER	b <sub>1</sub>									b <sub>2</sub>	b <sub>3</sub>	b <sub>4</sub>	WT. Lbs.
	a <sub>1</sub>	a <sub>2</sub>	a <sub>3</sub>	W=4'-4"	W=5'-4"	W=6'-4"	W=7'-4"	W=8'-4"	W=9'-4"				
1	4	4	2	1	3	5	7	9	6	1	1		
SIZE	#4	#4	#4	#4	#4	#4	#4	#4	#4	#4	#6		
LENGTH	W=4'-4"	5'-7"	6'-7"	4'-0"	6'-1"	-	-	-	1'-9"	6'-2"	4'-8"	60±	
	W=5'-4"	7'-7"	8'-7"	5'-0"	6'-1"	-	-	-	1'-9"	6'-2"	4'-8"	81±	
	W=6'-4"	9'-7"	10'-7"	6'-0"	-	6'-1"	-	-	1'-9"	6'-2"	4'-8"	101±	
	W=7'-4"	11'-7"	12'-7"	7'-0"	-	-	6'-1"	-	1'-9"	6'-2"	4'-8"	121±	
	W=8'-4"	13'-7"	14'-7"	8'-0"	-	-	-	6'-1"	1'-9"	6'-2"	4'-8"	141±	

Note: a<sub>3</sub> Bars to be Placed Approx. 2" Below Top of Inlet Cover.

**STANDARD CURB INLET PRECAST TOPS**

W	PRE-CAST TOP SIZE	PIPE SIZE	CUL. YD. CONC.
4'-4"	3'-8" 6'-4" 7 1/2"	21" & SMALLER	0.38±
5'-4"	4'-8" 6'-4" 7 1/2"	24" & 30"	0.51±
6'-4"	5'-8" 6'-4" 7 1/2"	36" & 42"	0.64±
7'-4"	6'-8" 6'-4" 7 1/2"	48" & 54"	0.77±
8'-4"	7'-8" 6'-4" 7 1/2"	60" & 66"	0.90±

**GENERAL NOTES**

- Concrete tops to be installed on thin mortar cushion to insure full support along brick walls. Concrete tops may be cast in place or precast. Concrete used for inlet construction shall be concrete pavement mix.
- Contractor shall have the option of constructing 8" brick masonry walls between the concrete inlet base and top on this inlet when W=6'-4" and H=7'-0" or less.
- Inlet invert shall be shaped with 8 sack sand mix concrete to create flow channels and to increase hydraulic efficiency such that the inlet will be self cleaning between all inlet and/or outlet pipes.
- The ends of all pipes installed in inlets shall be cut off flush with the inside face of the inlet wall.

Revised - Dec. 21, 1984

CITY OF WICHITA STANDARD TYPE I  
**CURB INLET DETAILS**  
INLET OPENING = 6"X5'-0"

**BAUGHMAN COMPANY P. A.**  
ENGINEERING, SURVEYING, & PLANNING  
316-262-7271 • 315 ELLIS • WICHITA, KANSAS 67211

PROJECT NUMBER  
**472-76-245-81673-000-001**

DESIGN C.O.W.	DRAWN STAFF	APPROVED	DATE	SCALE	SHEET <b>3</b> OF <b>8</b>
------------------	----------------	----------	------	-------	-------------------------------------

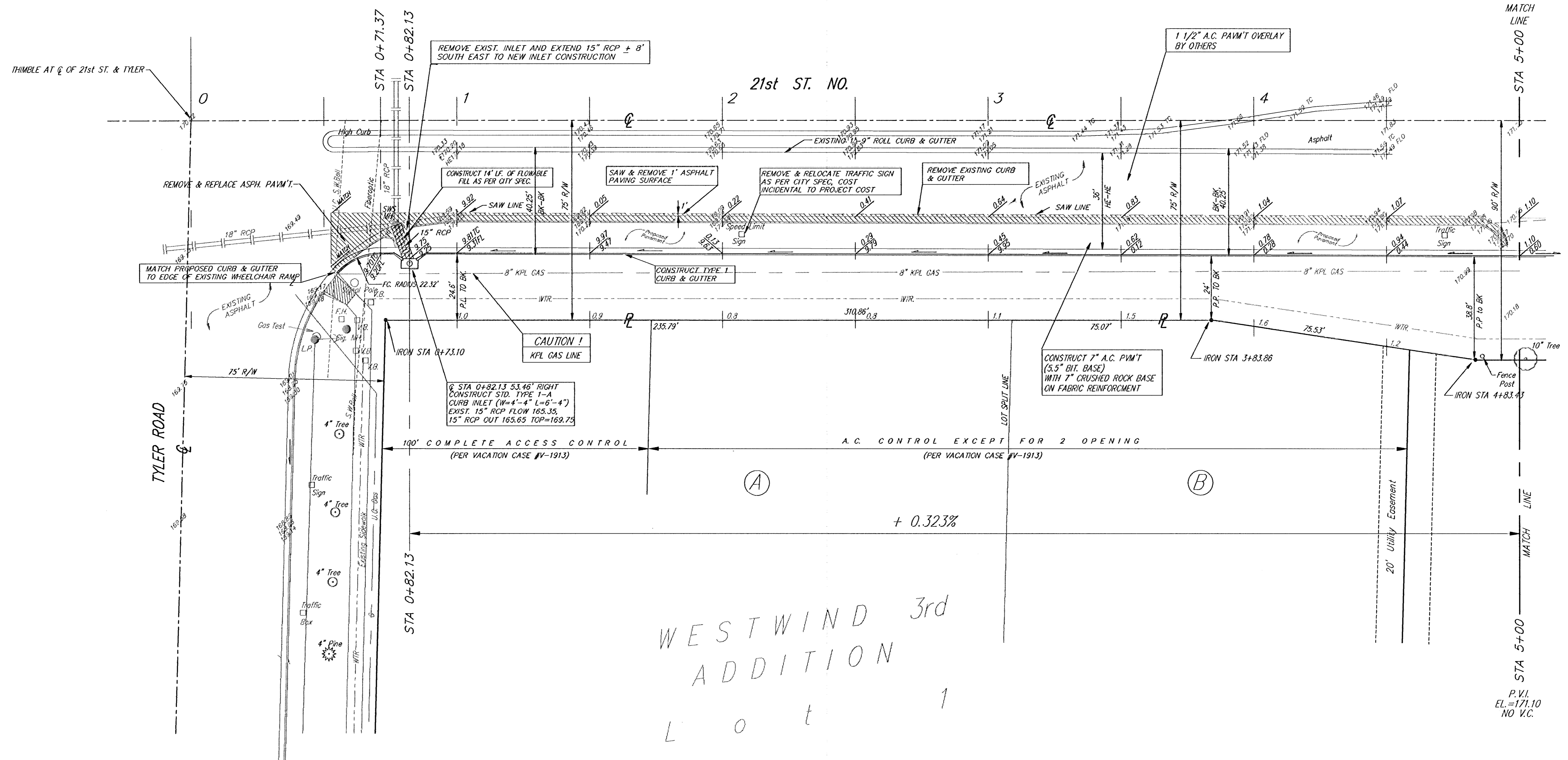
DETAILS/TPI-5

**BENCH MARKS:**

1. City Disc 73.6' N. & 53.3' E.  
@ Both 21st & Tyler  
Elev. = 170.95' City Datum
2. R.R. Spike in S.O. Face of  
Power Pole Adj. to NW. Corner  
of Golf Park West Add'n.  
(2± NE. of Corner)  
Elev. = 169.19' City Datum

BENCHMARK #1

Scale: 1" = 20'  
● = Iron



WESTWIND 3rd  
ADDITION  
Lot 1

EARTHWORK:  
EXCAVATION = 846.0 CY  
COMPACTED FILL = 311.5 CY

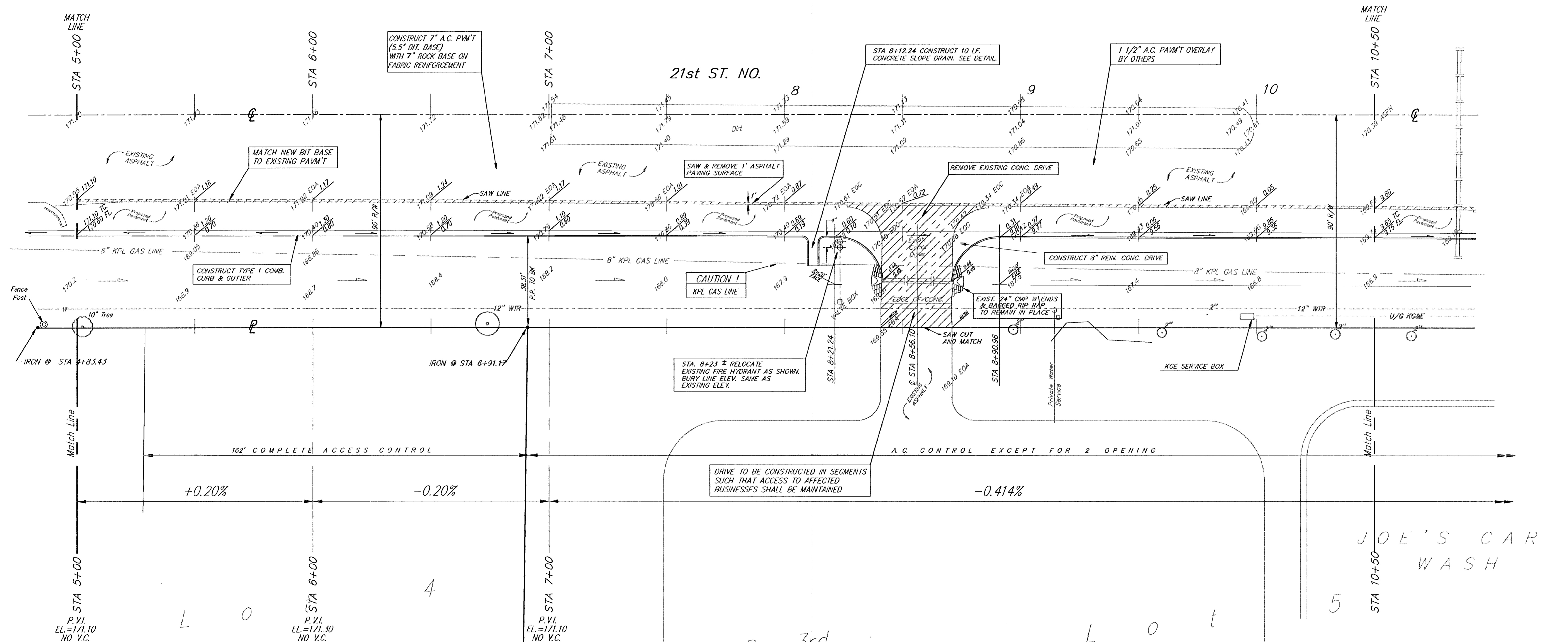
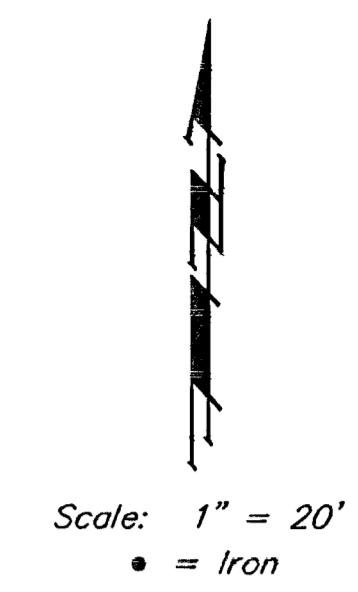
NOTE:  
1 1/2" A.C. OVERLAY ON 21st ST.  
TO BE CONSTRUCTED BY THE CITY  
OF WICHITA'S MAINTENANCE DEPT.

<b>21 ST. &amp; TYLER RD.</b>			
ACCEL & DECEL LANE			
<b>BAUGHMAN COMPANY P.A.</b>			
ENGINEERING, SURVEYING, & PLANNING			
318-262-7271 • 315 ELLIS • WICHITA, KANSAS 67211			
PROJECT NUMBER		SHEET	
472-78-245-81673-000-001		4	
DESIGN	DRAWN	APPROVED	DATE
NBW	RWM		JULY 1995
SCALE		NOTED	
		8	

95-05-E043

**BENCH MARKS:**

1. City Disc 73.6' N. & 53.3 E. @ Both 21st & Tyler Elev. = 170.95' City Datum
2. R.R. Spike in SO. Face of Power Pole Adj. to NW. Corner of Golf Park West Add'n. (2'± NE. of Corner) Elev. = 169.19' City Datum



WESTWIND 3rd ADDITION

NOTE:  
1 1/2" A.C. OVERLAY ON 21st ST. TO BE CONSTRUCTED BY CITY OF WICHITA MAINTENANCE DEPT.

**21 ST. & TYLER RD.**  
ACCEL & DECEL LANE

**BAUGHMAN COMPANY P. A.**  
ENGINEERING, SURVEYING, & PLANNING  
316-262-7271 • 315 ELLIS • WICHITA, KANSAS 67211

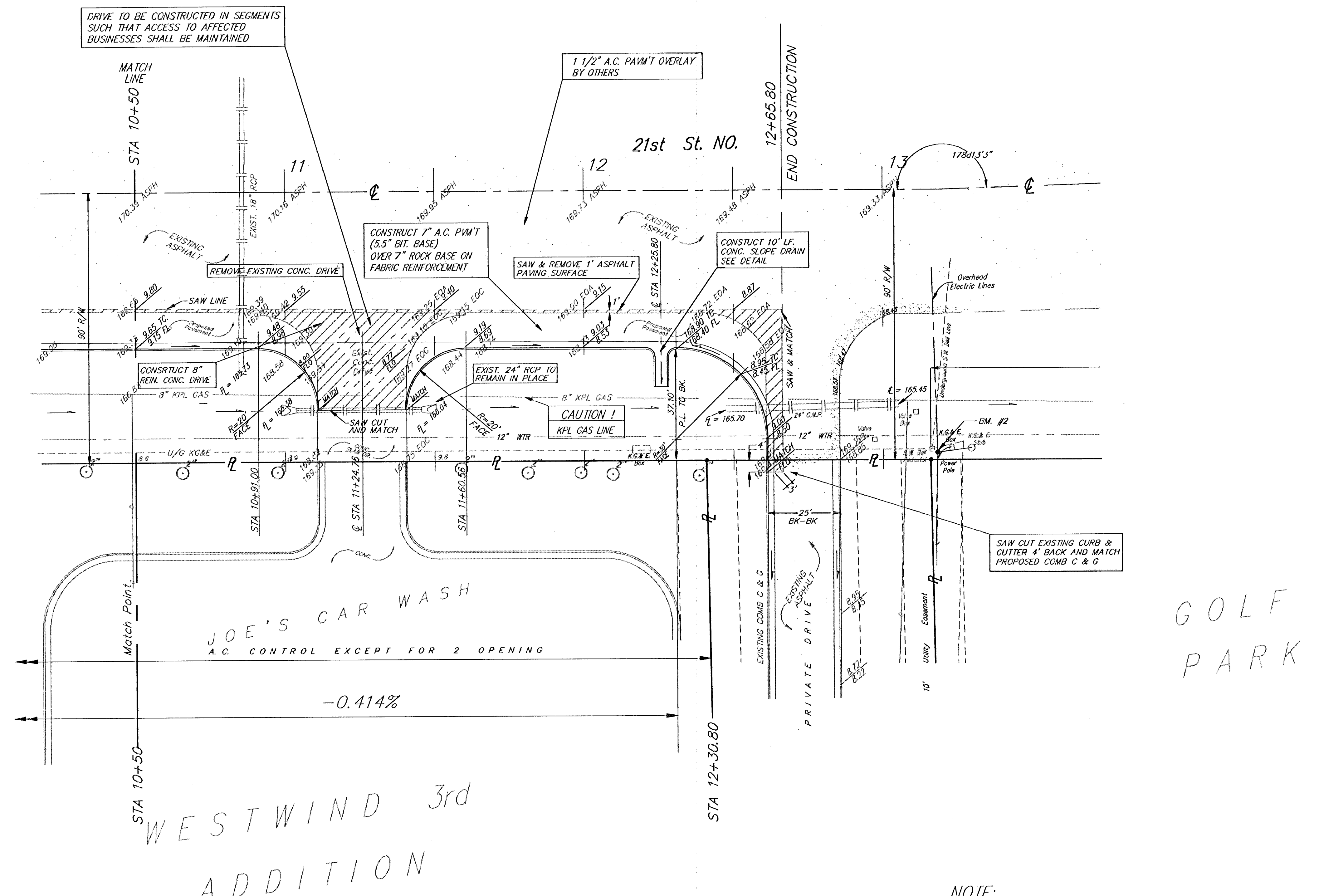
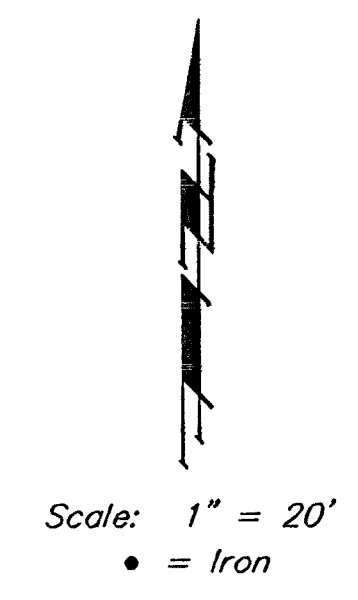
PROJECT NUMBER  
**472-76-245-81673-000-000-001**

DESIGN NGW	DRAWN RWM	APPROVED	DATE JULY 1995	SCALE noted	SHEET 5 OF 8
---------------	--------------	----------	-------------------	----------------	-----------------------

www.baughman.com 1512

**BENCH MARKS:**

1. City Disc 73.6' N. & 53.3' E.  
@ Both 21st & Tyler  
Elev. = 170.95' City Datum
2. R.R. Spike in SO. Face of  
Power Pole Adj. to NW. Corner  
of Golf Park West Add'n.  
(2± NE. of Corner)  
Elev. = 169.19' City Datum



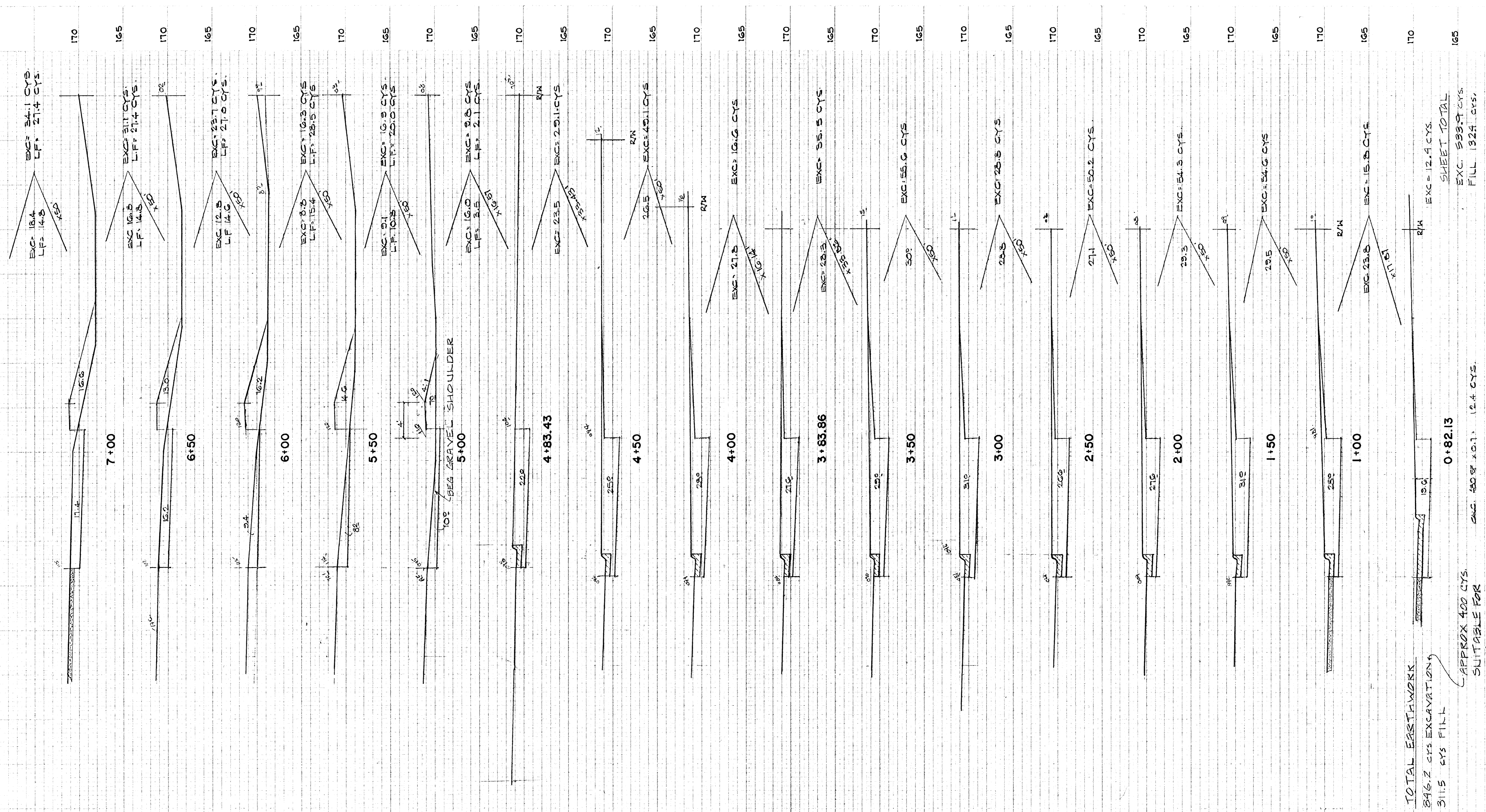
WESTWIND 3rd  
ADDITION  
Lot 5

GOLF  
PARK

**NOTE:**  
1 1/2" A.C. OVERLAY ONN 21st ST.  
TO BE CONSTRUCTED BY CITY OF  
WICHITA MAINTENANCE DEPT.

<b>21 ST. &amp; TYLER RD.</b>			
ACCEL & DECEL LANE			
<b>BAUGHMAN COMPANY P.A.</b>			
ENGINEERING, SURVEYING, & PLANNING			
316-282-7271 • 315 ELLIS • WICHITA, KANSAS 67211			
PROJECT NUMBER		SHEET	
472-76-245-81673-000-001		6	
DESIGN	DRAWN	APPROVED	SCALE
NBW	RMM		NOTED
DATE		SCALE	
JULY 1995		NOTED	

95-05-EG43  
W202CEL STR3



TOTAL EARTHWORK  
 846.2 CYS EXCAVATION  
 311.5 CYS FILL

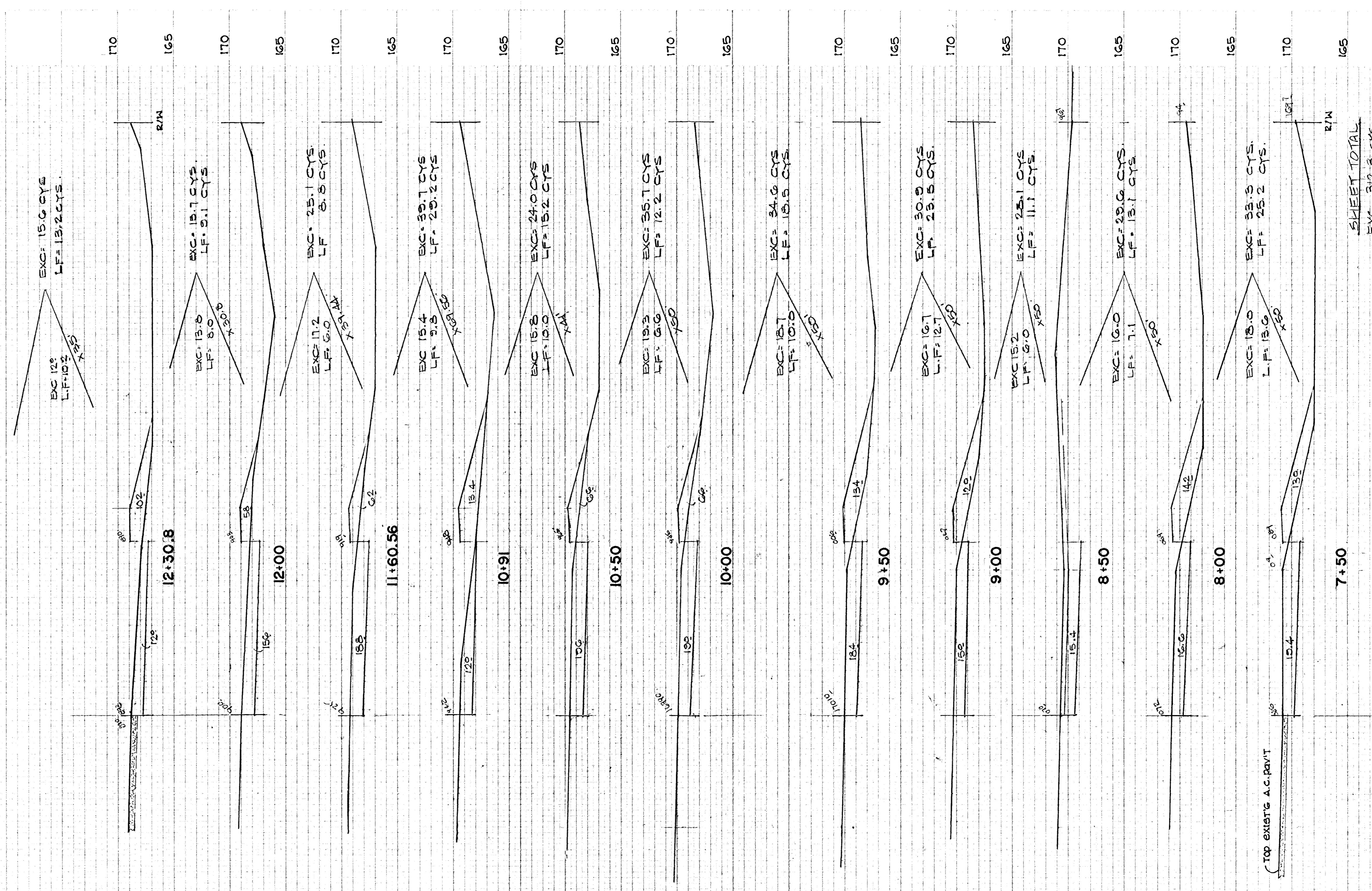
APPROX 400 CYS  
 SUITABLE FOR  
 VEGETATION

APPROX 400 SF x 0.1' = 12.4 CYS.

EXC = 12.4 CYS.  
 SHEET TOTAL  
 EXC. 599.9 CYS.  
 FILL 192.4 CYS.

ACCEL - DECEL LANE - SOUTH SIDE 21st STREET N. To  
 Serve Westwind 3rd Addition.

	<b>BAUGHMAN COMPANY P. A.</b> ENGINEERING & SURVEYING 316/262-7271 • 515 ELLIS • MCHTA, KANSAS 67211	REV
	PROJECT NUMBER <b>472-76-245-81673-000-000-001</b>	SHEET <b>7</b> / <b>8</b>



SHEET TOTAL  
 EXC. 312.3 CYS.  
 FILL 179.1 CYS.

ACCEL - DECEL LANE - SOUTH SIDE 21st STREET N. To Serve Westwind 3rd Addition.

**BAUGHMAN COMPANY P. A.**  
 ENGINEERING & SURVEYING  
 316/262-7271 • 315 ELLIS • WICHITA, KANSAS 67211

PROJECT NUMBER  
**472 - 76 - 245 - 81673 - 000-000-001**

REV  
 SHEET  
**8**