

WILSON FARMS SECOND ADDITION PHASE 1A

AN ADDITION TO THE CITY OF WICHITA
BEDFORD COUNTY, KANSAS

CHURCHILL CIRCLE: FROM THE SOUTH LINE OF LOT 24, BLOCK 2 TO THE WEST LINE OF LOT 34, BLOCK 2.

PROJECT NO. 472-83245 & 448-89628

MICHAEL E. UNDEBAK, CITY ENGINEER

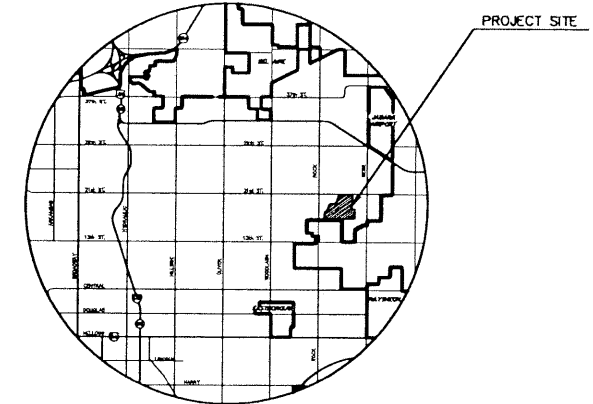
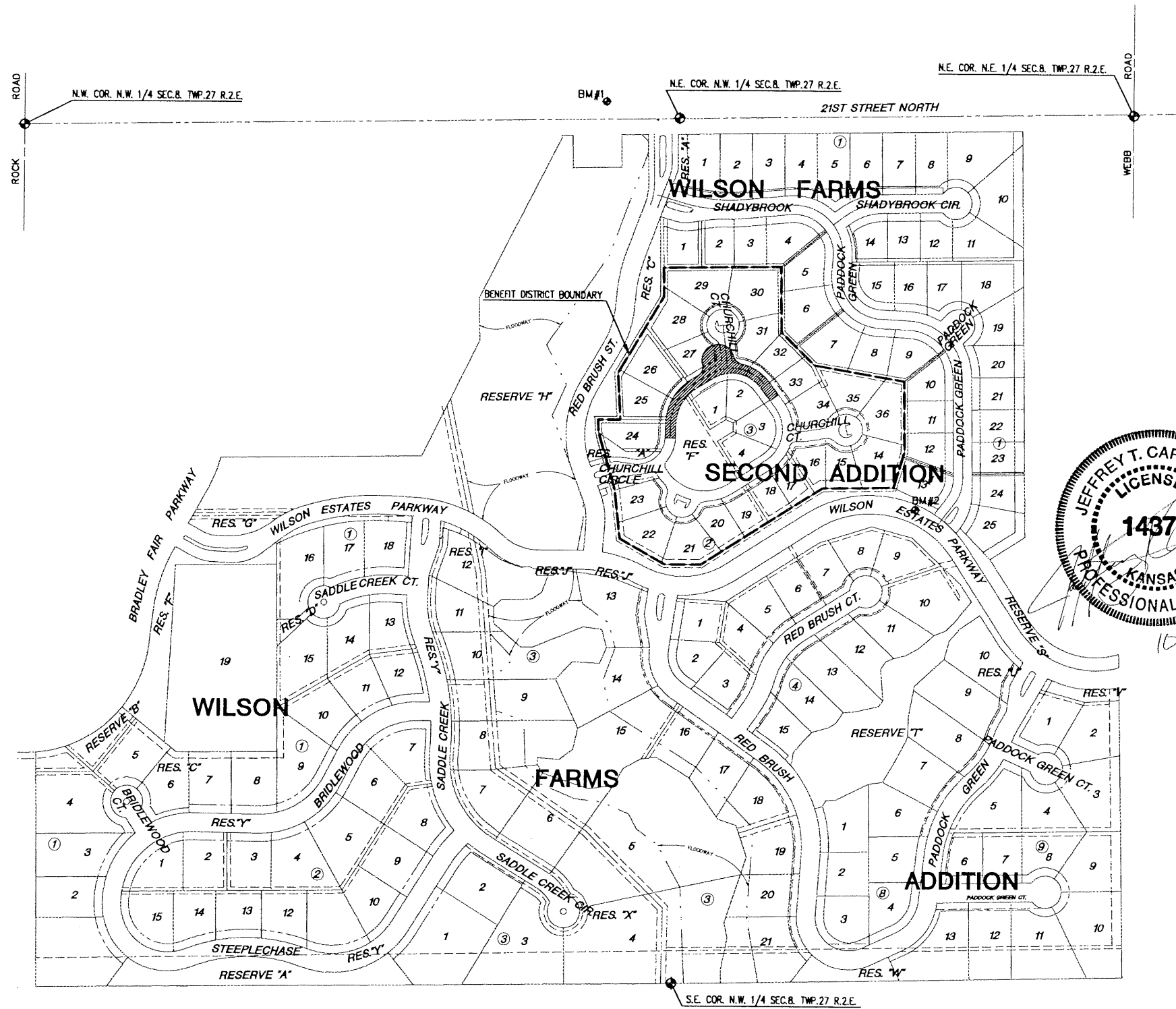
OCA NO. 765704

GENERAL NOTES

- UNLESS SHOWN OR STATED OTHERWISE ON THESE DRAWINGS, MATERIALS AND CONSTRUCTION SHALL BE IN ACCORDANCE WITH CITY OF WICHITA CONCRETE PAVEMENT AND ASPHALTIC CONCRETE PAVEMENT SPECIFICATIONS.
 - THE CONTRACTOR SHALL BE RESPONSIBLE FOR PRESERVING PROPERTY IRONS. THE CONTRACTOR SHALL BE REQUIRED TO RE-ESTABLISH ANY PROPERTY IRONS WHICH ARE DAMAGED OR DESTROYED BY HIS CONSTRUCTION OPERATIONS. SUCH IRONS SHALL BE RE-ESTABLISHED BY A LICENSED LAND SURVEYOR IN ACCORDANCE WITH STATE LAWS.
 - EXISTING UTILITIES AND THEIR LOCATIONS AS SHOWN ON THE PLANS REPRESENT THE BEST INFORMATION OBTAINABLE FOR DESIGN. LOCATION INFORMATION HAS BEEN OBTAINED FROM THE VARIOUS COMPANIES AND IS EITHER FROM COMPANY UTILITY DRAWINGS OR COMPANY PROVIDED FIELD LOCATIONS. THE PLAN LOCATIONS SHOWN ARE NOT GUARANTEED. ADDITIONAL EXISTING UTILITIES MAY ALSO BE ENCOUNTERED.
 - CONTRACTOR WILL BE REQUIRED TO PROVIDE A MINIMUM ADVANCE NOTICE OF FORTY-EIGHT (48) HOURS TO UTILITY COMPANIES TO STARTING ANY EXCAVATION AS FOLLOWS:
KANSAS ONE-CALL 687-2470
OR 687-2470 (LOCAL WICHITA)
- THE CONTRACTOR MUST NOTIFY THE FOLLOWING IN CASE OF EMERGENCY:
- | | |
|--------------------------------------|----------------|
| CABLEVISION | 262-0661 |
| K&E (GAS & ELECTRIC) | 363-8600 |
| SOUTHWESTERN BELL TELEPHONE COMPANY | 1-800-734-7590 |
| CITY OF WICHITA WATER & SEWER MAINT. | 262-6000 |
| ARKLA GAS COMPANY | 946-0096 |
- RUBBLE FROM THE REMOVAL OF MISCELLANEOUS STRUCTURES AND EXCESS EXCAVATION WHICH IS TO BE WASTED SHALL BE DISPOSED OF ON SITES TO BE APPROVED BY THE CONTRACTOR. THESE SITES SHALL BE APPROVED BY THE ENGINEER AS TO SUITABILITY, APPEARANCE AND SITE LOCATION. LOCATIONS THAT, IN THE OPINION OF THE ENGINEER, WILL LEAVE AN UNSIGHTLY APPEARANCE WILL NOT BE APPROVED. ALL DISPOSAL SITES MUST BE APPROVED BY THE KANSAS DEPARTMENT OF HEALTH AND ENVIRONMENT. MATERIAL EITHER STOCKPILED OR DISPOSED OF IN A FLOODPLAIN WOULD REQUIRE A KANSAS STATE BOARD OF AGRICULTURE PERMIT. ANY MATERIAL DUMPED IN WATERS OF THE UNITED STATES OR WETLANDS IS SUBJECT TO U.S. CORPS OF ENGINEERS PERMITTING REGULATIONS. ANY MATERIAL BURIED OR STOCKPILED BEYOND APPROVED CONSTRUCTION LIMITS WOULD REQUIRE ADDITIONAL ARCHAEOLOGICAL INVESTIGATIONS UNLESS BURIED IN A PREVIOUSLY APPROVED BORROW LOCATION.
 - A SAW CUT OF AT LEAST ONE-HALF THE DEPTH OF THE EXISTING SURFACE COURSES OR ONE-FOURTH THE DEPTH OF THE EXISTING TOTAL PAVEMENT THICKNESS SHALL BE PROVIDED AT LOCATIONS WHERE PROPOSED CONSTRUCTION ABUTS AN EXISTING SURFACE OR PAVEMENT FOR WHICH PARTIAL REMOVAL OF THAT SURFACE OR PAVEMENT IS REQUIRED. SAW JOINT TO FACILITATE REMOVAL WITHIN THREE (3) FEET OF EXISTING JOINTS WILL NOT BE PERMITTED AND FOR SUCH INSTANCES THE LIMITS OF REMOVAL SHALL EXTEND TO THE EXISTING JOINT. SUCH SAW CUTS WILL NOT BE PAID FOR DIRECTLY AND THIS COST SHALL BE CONSIDERED AS SUBSIDIARY TO THE REMOVAL OF SURFACE OR PAVEMENT.
 - CONTRACTOR SHALL SEED ALL DISTURBED AREAS WITH AN ANNUAL RYE GRASS AT A RATE OF 250LBS./ACRE. FERTILIZER SHALL ALSO BE APPLIED AT A RATE OF 75LBS./ACRE.
 - THE CONTRACTOR SHALL COORDINATE WITH THE DEVELOPER AND ENGINEER ON THE REMOVAL OF TREES OUTSIDE OF BACK OF CURBS. NO TREES SHALL BE REMOVED PRIOR TO A MEETING ON SITE WITH THE CITY, DEVELOPER AND ENGINEER.
 - EQUIPMENT AND CONSTRUCTION MATERIALS SHALL REMAIN OUT OF AND AWAY FROM TREE DRIFTLINES SO AS TO NOT COMPACT THE ROOT ZONE OR DAMAGE THE TREE.
 - ANY TREE THAT MUST HAVE BRANCHES REMOVED SHALL BE TRIMMED WITH SHARP INSTRUMENT/TOOL THAT IS INTENDED FOR SUCH OPERATIONS. KNOCKING BRANCHES OFF WITH A BACKHOE OR OTHER SIMILAR MACHINES IS NOT ACCEPTABLE! REFER TO DETAIL, SHEET 9 FOR TRIMMING PROCEDURE.
 - OTHER CONSTRUCTION MAY BE UNDER WAY SIMULTANEOUSLY WITH THIS PROJECT. THE CONTRACTOR SHALL COORDINATE WITH ANY CONTRACTORS CONSTRUCTING OTHER PHASES.
 - ALL TOPSOIL SHALL BE STRIPPED IN AREAS OF CUT/FILL AND STOCKPILED.
 - A 6" LAYER OF TOPSOIL IS TO BE PLACED OVER ALL AREAS WHERE THE VIRGIN GRADE NO LONGER EXISTS WITH THE EXCEPTION OF PAVED AREAS. THIS INCLUDES BEAMS, SLOES AND SLOPES. NOTE: THE FINISHED GRADE INDICATES THE SURFACE ELEVATION AFTER THE 6" LAYER OF TOPSOIL HAS BEEN PLACED.

BENCHMARKS

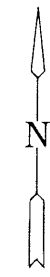
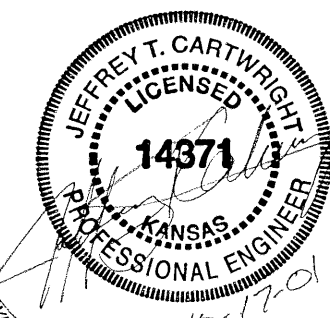
- BM#1 C.O.W. BENCHMARK
1/2 MILE EAST OF ROCK ROAD ON 21ST ST.
C.O.W. BENCH MARK, N.E. COR. HUBGUARD ON
R.C.B.C.
ELEV. = 190.005 (PUBLISHED ELEV. = 190.04)
- BM#2 TOP OF "T" POST ± 7' NORTH OF THE SE.
CORNER RESERVE "L" (SOUTH OF LOT 15, BLK. 5).
ELEV. = 195.00



LOCATION MAP

INDEX TO DRAWINGS

SHEET NO.	DESCRIPTION
1	TITLE SHEET
2-5	PAVING DETAILS
6-8	EROSION CONTROL DETAILS
9	PAVING PLAN
10-12	CROSS SECTIONS
13	WATER PLAN
14	WATER DETAILS
15	WILSON FARMS SECOND ADD. FINAL PLAT
16	WILSON FARMS THIRD ADD. PRELIMINARY PLAT



SCALE: 1" = 200'

LENGTH OF PROJECT	29' BK.-BK.	487 FT.
EARTHWORK SUMMARY		
EXCAVATION	80.8 C.Y.	
LOOSE FILL	497.7 C.Y.	
COMPACTED FILL	908.5 C.Y.	



PROJECT NAME: WILSON FARMS SECOND ADDITION

SHEET TITLE: PAVING PLANS - PHASE 1A

DESIGN BY: GJA/JTC	DRAWN BY: DM	CHECKED BY: GJA/JTC
DATE: OCTOBER 2001	JOB NO.: 01202ET	SHEET/OF: 1 / 16