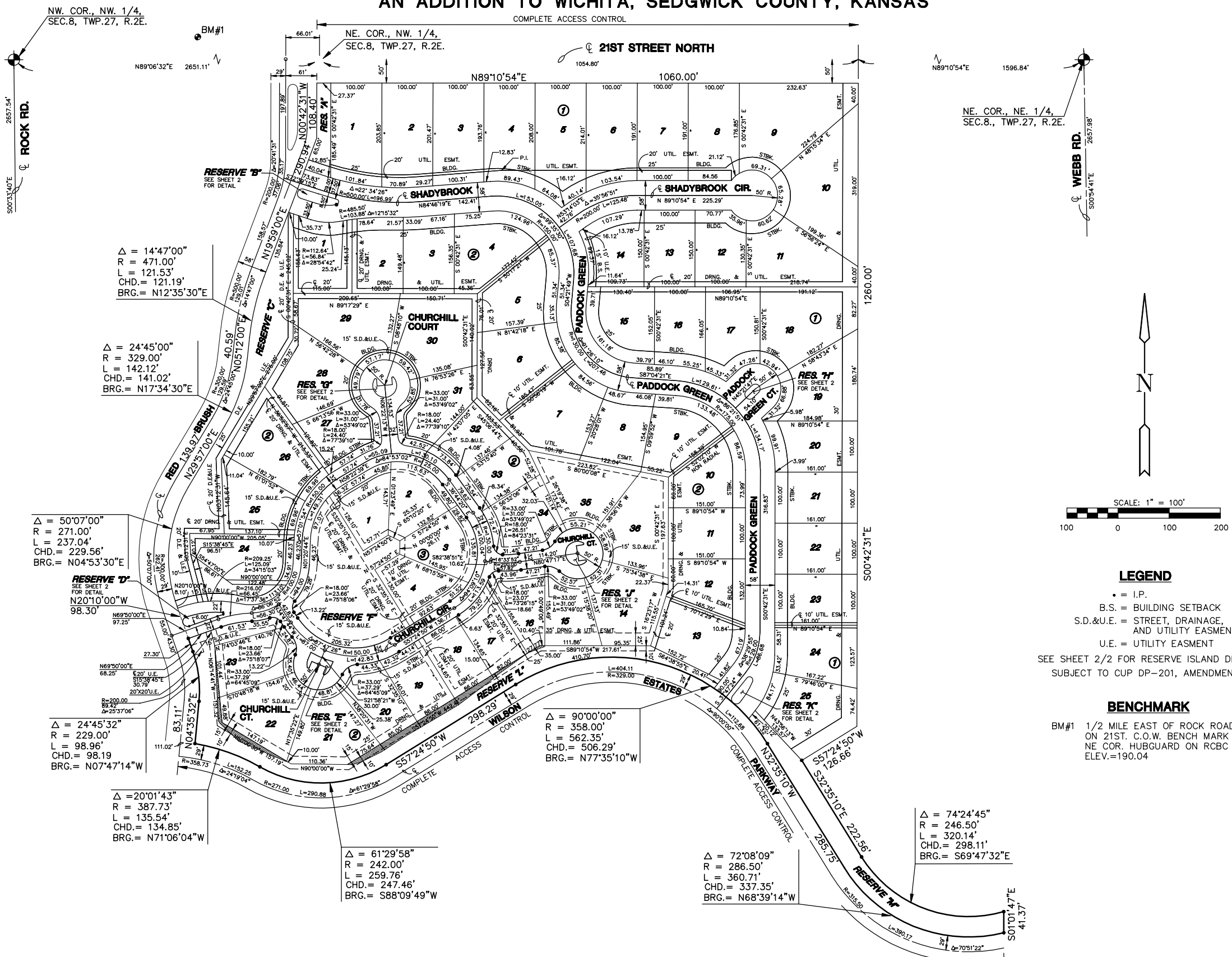


# FINAL PLAT

## WILSON FARMS SECOND ADDITION

### AN ADDITION TO WICHITA, SEDGWICK COUNTY, KANSAS



$\Delta = 14^{\circ}47'00''$   
 $R = 471.00'$   
 $L = 121.53'$   
 $CHD. = 121.19'$   
 $BRG. = N12^{\circ}35'30''E$

$\Delta = 24^{\circ}45'00''$   
 $R = 329.00'$   
 $L = 142.12'$   
 $CHD. = 141.02'$   
 $BRG. = N17^{\circ}34'30''E$

$\Delta = 50^{\circ}07'00''$   
 $R = 271.00'$   
 $L = 237.04'$   
 $CHD. = 229.56'$   
 $BRG. = N04^{\circ}53'30''E$

$\Delta = 24^{\circ}45'32''$   
 $R = 229.00'$   
 $L = 98.96'$   
 $CHD. = 98.19'$   
 $BRG. = N07^{\circ}47'14''W$

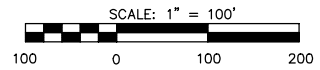
$\Delta = 20^{\circ}01'43''$   
 $R = 387.73'$   
 $L = 135.54'$   
 $CHD. = 134.85'$   
 $BRG. = N71^{\circ}06'04''W$

$\Delta = 61^{\circ}29'58''$   
 $R = 242.00'$   
 $L = 259.76'$   
 $CHD. = 247.46'$   
 $BRG. = S88^{\circ}09'49''W$

$\Delta = 90^{\circ}00'00''$   
 $R = 358.00'$   
 $L = 562.35'$   
 $CHD. = 506.29'$   
 $BRG. = N77^{\circ}35'10''W$

$\Delta = 72^{\circ}08'09''$   
 $R = 286.50'$   
 $L = 360.71'$   
 $CHD. = 337.35'$   
 $BRG. = N68^{\circ}39'14''W$

$\Delta = 74^{\circ}24'45''$   
 $R = 246.50'$   
 $L = 320.14'$   
 $CHD. = 298.11'$   
 $BRG. = S69^{\circ}47'32''E$



#### LEGEND

- = I.P.
  - B.S. = BUILDING SETBACK
  - S.D.&U.E. = STREET, DRAINAGE, AND UTILITY EASMENT
  - U.E. = UTILITY EASMENT
- SEE SHEET 2/2 FOR RESERVE ISLAND DETAILS  
SUBJECT TO CUP DP-201, AMENDMENT 1

#### BENCHMARK

BM#1 1/2 MILE EAST OF ROCK ROAD  
 ON 21ST. C.O.W. BENCH MARK  
 NE COR. HUBGUARD ON RCBC  
 ELEV.=190.04