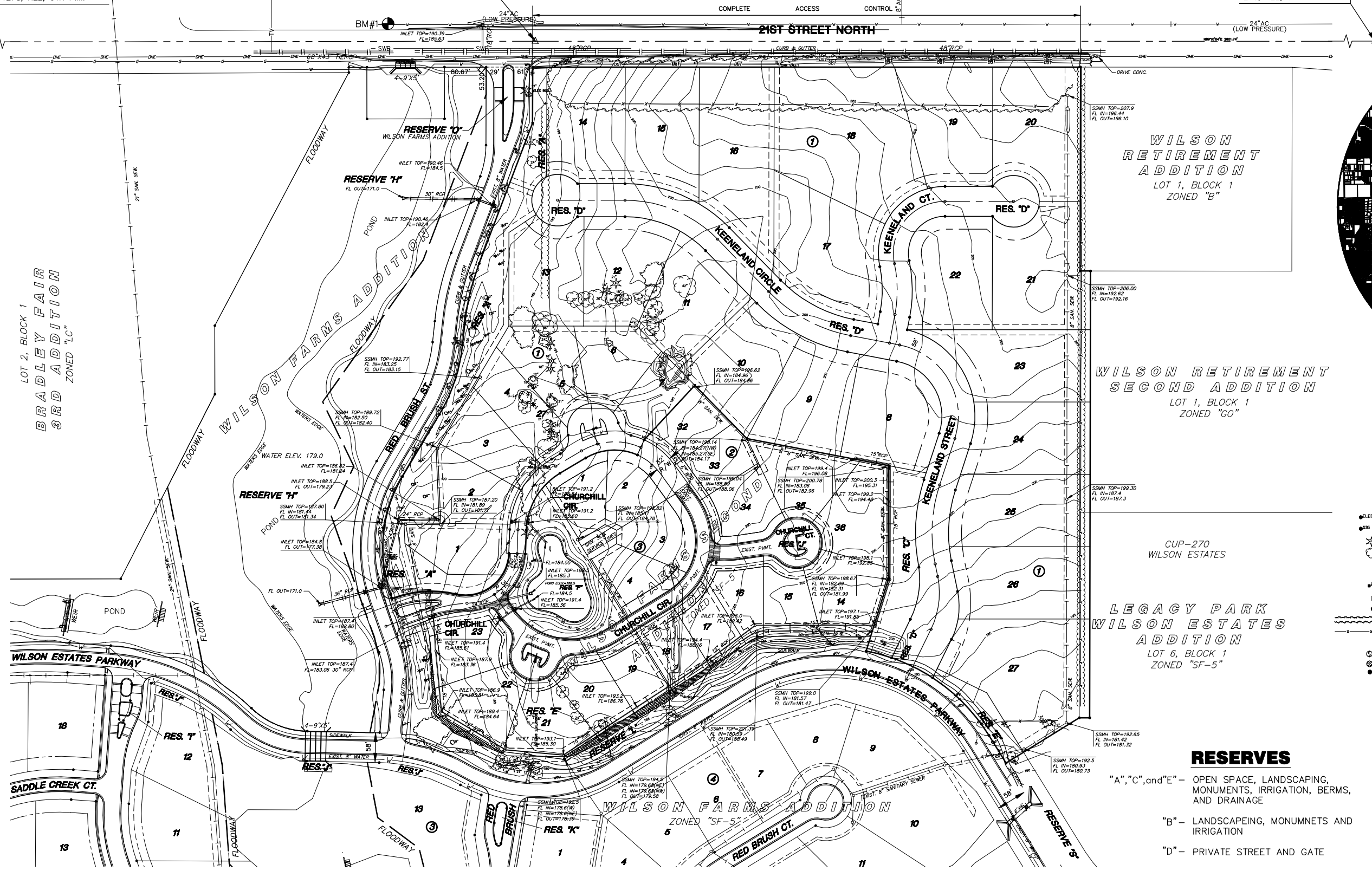


NW COR., NE. 1/4, SEC. 8,
T27S, R2E, 6TH P.M.

N. 1/4 COR., SEC. 8,
T27S, R2E, 6TH P.M. TALLGRASS GOLF COURSE

NE COR., NE. 1/4, SEC. 8,
T27S, R2E, 6TH P.M.

PLAT LOCATION



VICINITY MAP

LEGEND

- GAS METER
- - GROUND YARD LIGHT
- - YARD LIGHT ON POLE
- - ELECTRIC MANHOLE
- - SIGNAL LIGHT
- - CONIFEROUS TREE & DIAMETER
- - DECIDUOUS TREE & DIAMETER
- - SIGN
- - BUSH
- - POWER POLE AND GUY ANCHOR
- - ELECTRIC BOX
- - SEWER CLEANOUT
- - EDGE OF TREES
- - FENCE
- - BENCHMARK
- - STORM WATER MANHOLE
- - SANITARY SEWER MANHOLE
- - TELEPHONE MANHOLE
- - POLE
- - GATE
- - LIGHT POLE
- - FIRE HYDRANT
- - WATER VALVE
- - WATER METER
- - IRRIGATION CONTROL VALVE
- - TELEPHONE RISER
- - INLET
- - STORM SEWER PIPE
- - WATER LINE
- - SANITARY SEWER LINE
- - GAS LINE
- - TELEPHONE LINE
- - UNDERGROUND ELECTRIC LINE
- - OVERHEAD ELECTRIC
- - SECTION CORNER
- - 5/8" REBAR/MKEC
- - 5/8" SET
- - PROPERTY CORNER FOUND

BENCHMARK

BM#1 1/2 mile East of Rock Rd. on 21st Street, COW Benchmark NE. corner hubguard on RCBC.
ELEV. = 190.04 (city datum)

NOTES

1. ZONING: SF-6 (EXISTING AND PROPOSED)
2. CONFORMS TO CUP-270

RESERVES

- "A", "C", and "E" - OPEN SPACE, LANDSCAPING, MONUMENTS, IRRIGATION, BERMS, AND DRAINAGE
- "B" - LANDSCAPING, MONUMENTS AND IRRIGATION
- "D" - PRIVATE STREET AND GATE

PRELIMINARY PLAT WILSON FARMS THIRD ADDITION

DATE: SEPTEMBER 2001

OWNERS/DEVELOPER: WILSON RESIDENTIAL COMPANY L.L.C. -, 8100 E. 22ND ST. NORTH, BLDG. 1000, WICHITA, KS 67226 AND BARBARA W. WADDELL

SCALE: 1" = 100'

MKEC
ENGINEERING CONSULTANTS
411 N. WEBB ROAD
WICHITA, KS. 67208
316-684-9800