

STATE	PROJECT NO.	YEAR	SHEET NO.	TOTAL SHEETS
KANSAS	87 N-0240-01	2004	37	42

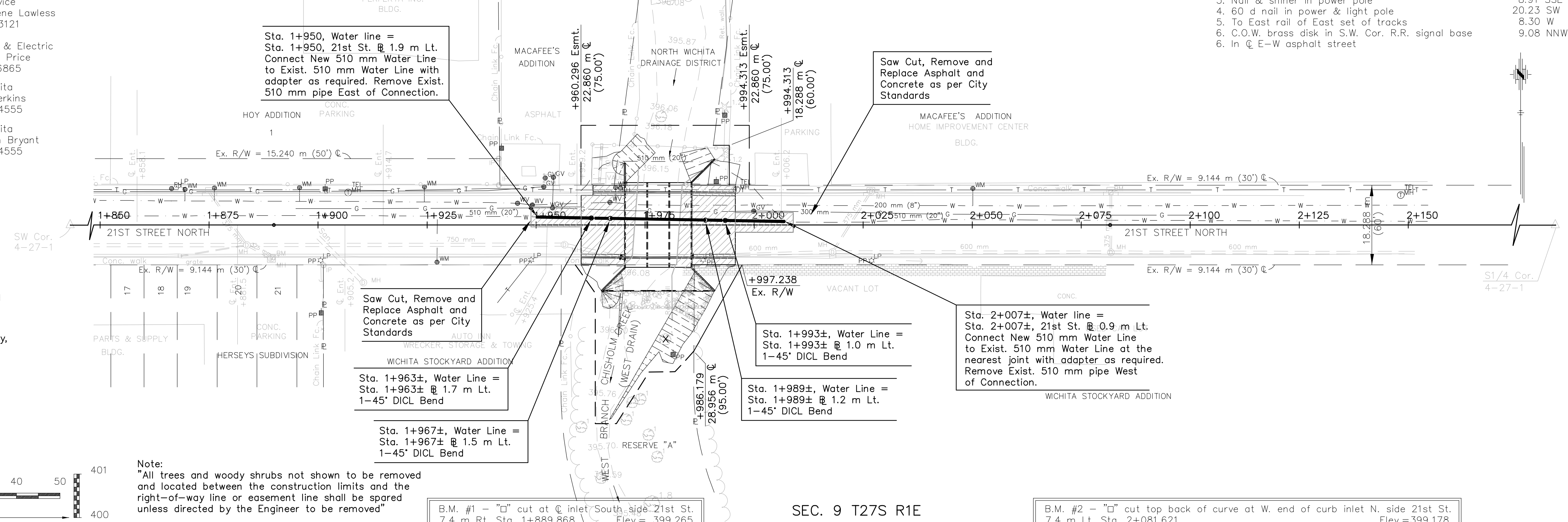
LIST OF UTILITIES

Utility	Location	Owner-Address
Telephone	As shown on plans (Underground N. of Br.) (Overhead S. of Br.)	Southwestern Bell Attn: Bob Alley (316) 268-2245
Gas	As shown on plans (Line N. side of Br.)	KS Gas Service Attn: Charlene Lawless (316) 832-3121
Electric	Right thru Project (Overhead South of Br.)	Kansas Gas & Electric Attn: Shane Price (316) 261-6865
Water	Left thru Project	City of Wichita Attn: Bill Perkins (316) 268-4555
Storm Sewer & San. Sewer	As shown on plans	City of Wichita Attn: Shawn Bryant (316) 268-4555

- Ref. SW Cor. Sec 4 T27S R1E= Sta. 1+656.022
- Fnd. 21 mm Iron Pipe in Thimble
 - "X" cut top West curb of traffic island
 - "X" cut top Conc. curb
 - "X" cut top Conc. curb
 - To N.W. Cor. of brick Bldg.
 - In \odot of Broadway North to South
- Ref. P.O.T. @ Sta. 1+889.868
- Set 13 mm rebar @ P.O.T.
 - "□" cut top Conc. curb (BM #1)
 - Spike & washer in power pole
 - Spike & washer in power pole
- Ref. P.O.T. @ Sta. 2+081.621
- Set 13 mm rebar @ P.O.T.
 - "□" cut top Conc. curb (BM #2)
 - Spike & washer in power pole
 - To the S.E. Cor. of Bldg.

- Ref. S 1/4 Cor. Sec 4 T27S R1E = Sta. 2+471.489
- Fnd. 21 mm Iron Pipe in Thimble
 - "X" cut top S.W. Cor. Conc. block @ S.W. Cor. Bldg.
 - Nail & shiner in power pole
 - 60 d nail in power & light pole
 - To East rail of East set of tracks
 - C.O.W. brass disk in S.W. Cor. R.R. signal base
 - In \odot E-W asphalt street

SEC. 4 T27S R1E



SEC. 9 T27S R1E

B.M. #1 - "□" cut at \odot inlet South side 21st St. 7.4 m Rt. Sta. 1+889.868 Elev. = 399.265

B.M. #2 - "□" cut top back of curve at W. end of curb inlet N. side 21st St. 7.4 m Lt. Sta. 2+081.621 Elev. = 399.178

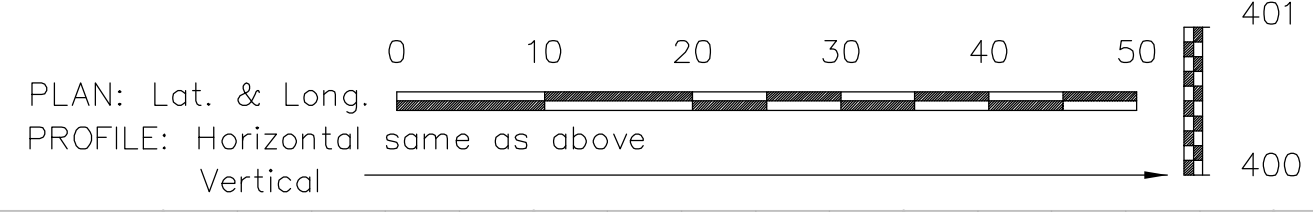
LEGEND

Removal of Existing Asphalt Surfacing, Curb & Gutter and sidewalks (Rock Excavation)

Note: Saw cuts shall not be paid for directly, but shall be considered Subsidiary to other items of the contract. All saw cuts shall be full depth.

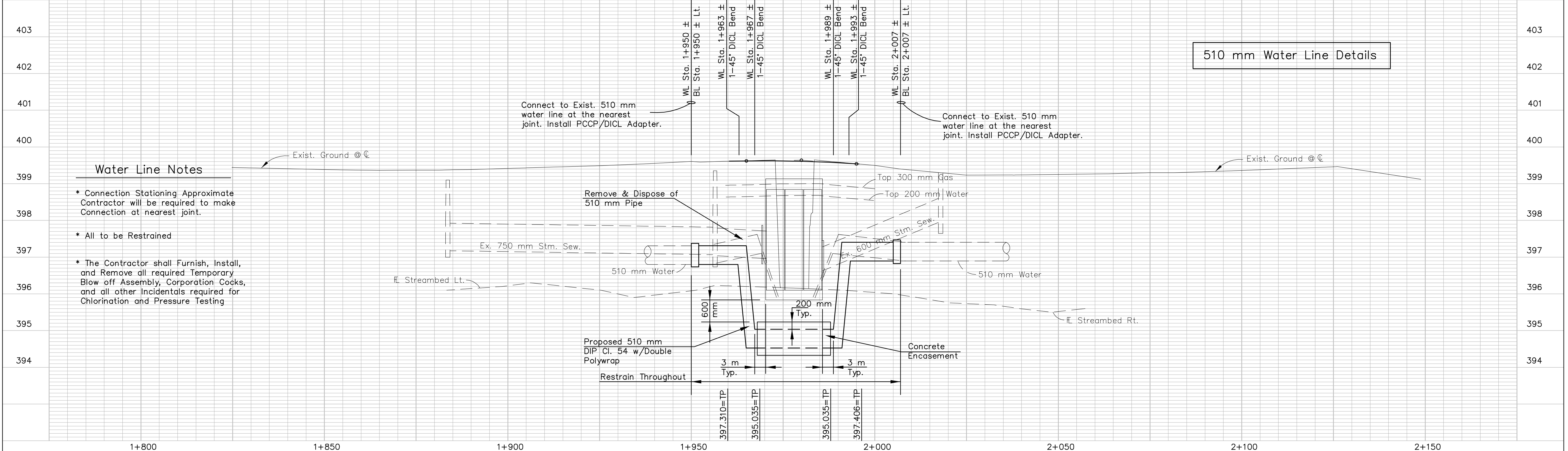
Note: All elevations shown on this project are based on U.S.G.S. Datum. C.O.W. B.M. Brass rod Concrete post North end of traffic island N.E. Cor. of Broadway and 21st Street North. Elevation 399.873

SCALE IN METERS



Note: "All trees and woody shrubs not shown to be removed and located between the construction limits and the right-of-way line or easement line shall be spared unless directed by the Engineer to be removed"

510 mm Water Line Details



Water Line Notes

- * Connection Stationing Approximate Contractor will be required to make Connection at nearest joint.
- * All to be Restrained
- * The Contractor shall Furnish, Install, and Remove all required Temporary Blow off Assembly, Corporation Cocks, and all other Incidentals required for Chlorination and Pressure Testing

PLAN SURVEYED, PLOTTED, ALIGNED, CHECKED, RT. BY WAY CHECKER.

PROFILE SURVEYED, PLOTTED, GRADES CHECKED, B.M. NOTED, VERTICALS CHECKED.

02518/DWGS/PP03 Scale 1:500