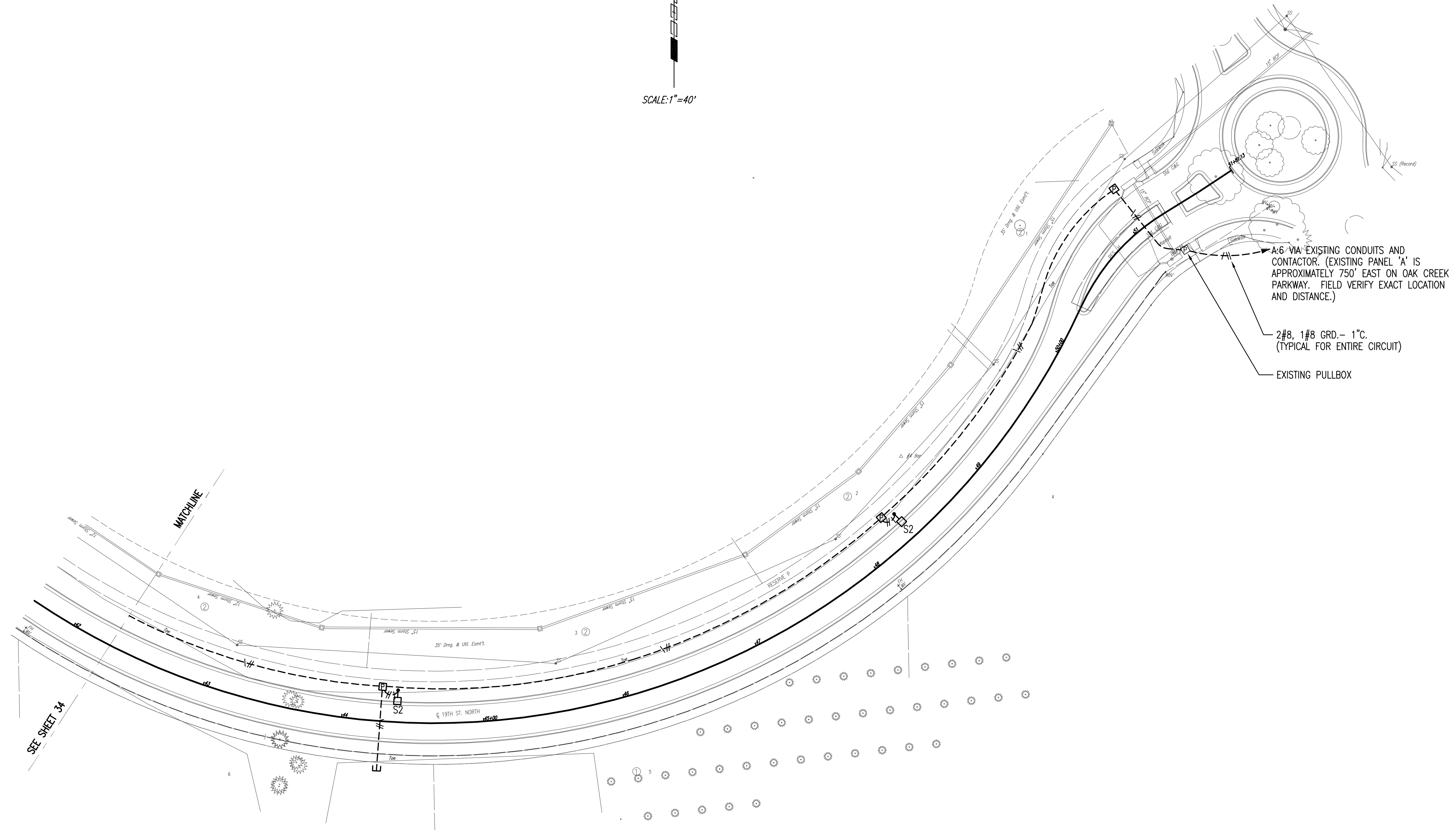
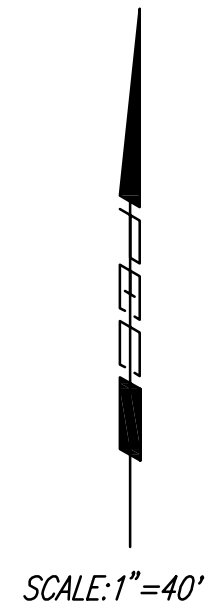


PLAN NOTES:

1. MINIMUM CONDUIT SIZE SHALL BE 1".
2. PVC COATED STEEL ELLS AND RISERS AS MANUFACTURED BY ROBROY, PERMA-COLE OR KORKAP SHALL BE USED FOR ALL LOCATIONS.
3. MAXIMUM UNDERGROUND BRANCH CIRCUIT CONDUCTOR PULL/INSTALLATION LENGTH SHALL NOT EXCEED 300'. PROVIDE AND INSTALL PULL BOXES PULL PER DETAIL 1 SHEET 32 FOR ALL BRANCH CIRCUITS INSTALLED WHERE THE PULL/INSTALLATION DISTANCE WILL EXCEED 300'. CONTRACTOR TO DETERMINE PULL BOX LOCATIONS IN THE FIELD.
4. CONDUIT ROUTING SHOWN ON PLANS IS SCHEMATIC ONLY. COORDINATE ROUTING WITH OTHER UTILITIES AND EXISTING TREES.



SEE SHEET 34

Saved: 11-07-2006 10:33:08 AM by: BJS
 Plot Scale: 1:480, 11-07-2006 12:15:56 PM by: BEJ
 J:\SENTOU\2005\05731\003\2006-11-07 to City DWG\40-ELEC PLAN-42-51 plan

No.	Revision	By	Date
OAK CREEK 2ND - PHASE 2			
ELECTRICAL PLAN STA. 42+00 TO 51+00			
JAMES L. ARMOUR, P.E. - CITY ENGINEER CITY OF WICHITA PROJECT NO. 472-84449			
Professional Engineering Consultants, P.A. 303 S. TOPEKA • WICHITA, KANSAS 67202 316-262-2691 • FAX 316-262-3003			
Designed by	DCG	Job No.	20-05731-003
Drawn by	MDB	Date	February 2006
			Sheet 40 of 84

