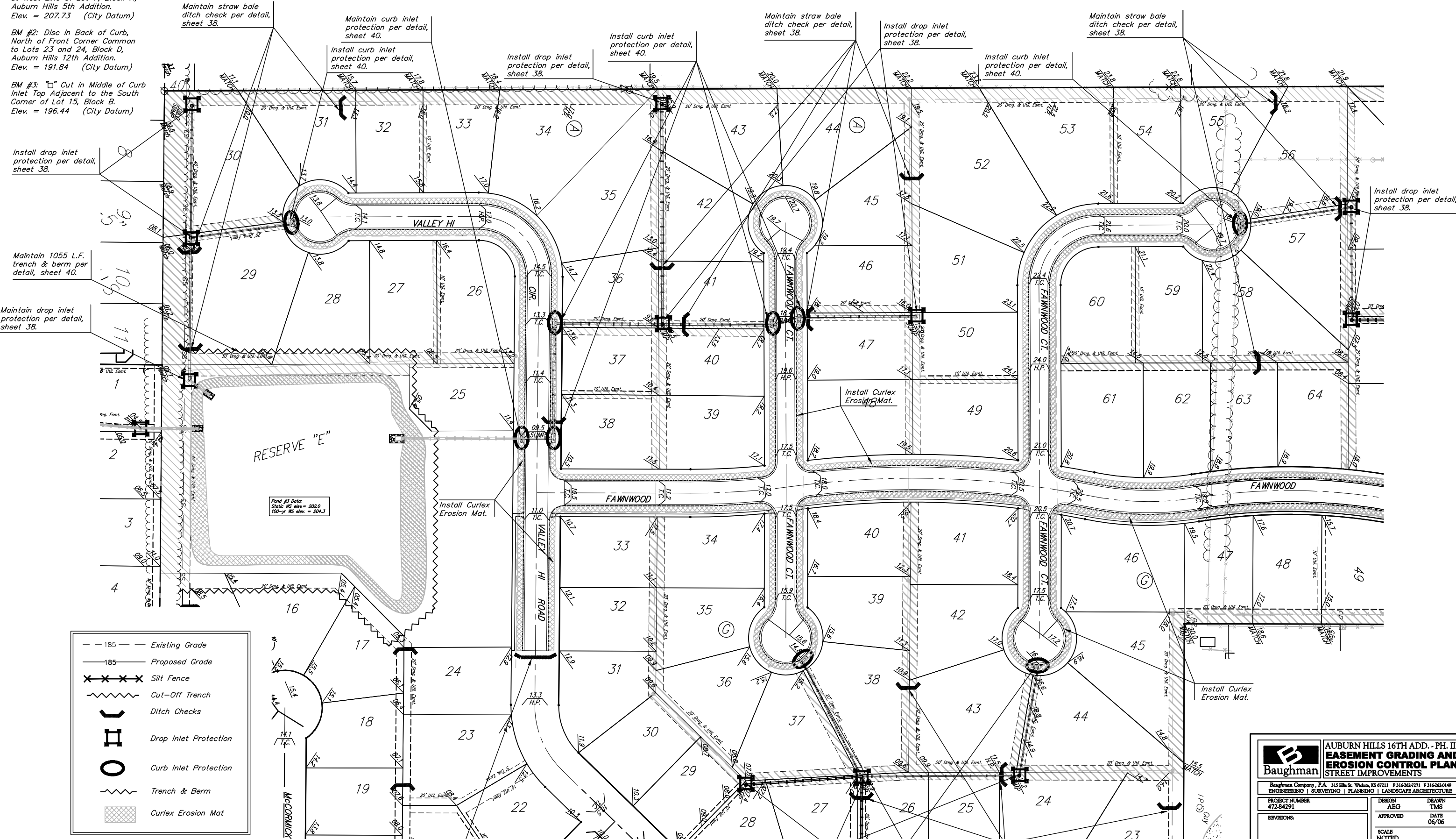


BENCHMARKS:
 BM #1: "C" Cut on Top of Curb at West Line of Lot 7, Block A, Auburn Hills 5th Addition. Elev. = 207.73 (City Datum)
 BM #2: Disc in Back of Curb, North of Front Corner Common to Lots 23 and 24, Block D, Auburn Hills 12th Addition. Elev. = 191.84 (City Datum)
 BM #3: "C" Cut in Middle of Curb Inlet Top Adjacent to the South Corner of Lot 15, Block B. Elev. = 196.44 (City Datum)



--- 185 ---	Existing Grade
— 185 —	Proposed Grade
XXXXX	Silt Fence
~~~~~	Cut-Off Trench
J	Ditch Checks
H	Drop Inlet Protection
O	Curb Inlet Protection
~~~~~	Trench & Berm
[Cross-hatched]	Curlex Erosion Mat

Baughman		AUBURN HILLS 16TH ADD. - PH. II EASEMENT GRADING AND EROSION CONTROL PLAN STREET IMPROVEMENTS	
Baughman Company, P.A. 315 Hill St. William, MS 39211 P 316-262-7771 F 316-262-0149			
ENGINEERING SURVEYING PLANNING LANDSCAPE ARCHITECTURE			
PROJECT NUMBER 472-84291	DESIGN AEG	DRAWN TMS	
REVISIONS:	APPROVED	DATE 06/06	
	SCALE NOTED		
	SHEET		
	40 OF 61		
AuburnHills16th/Phasel/STRac		06-02-E502	