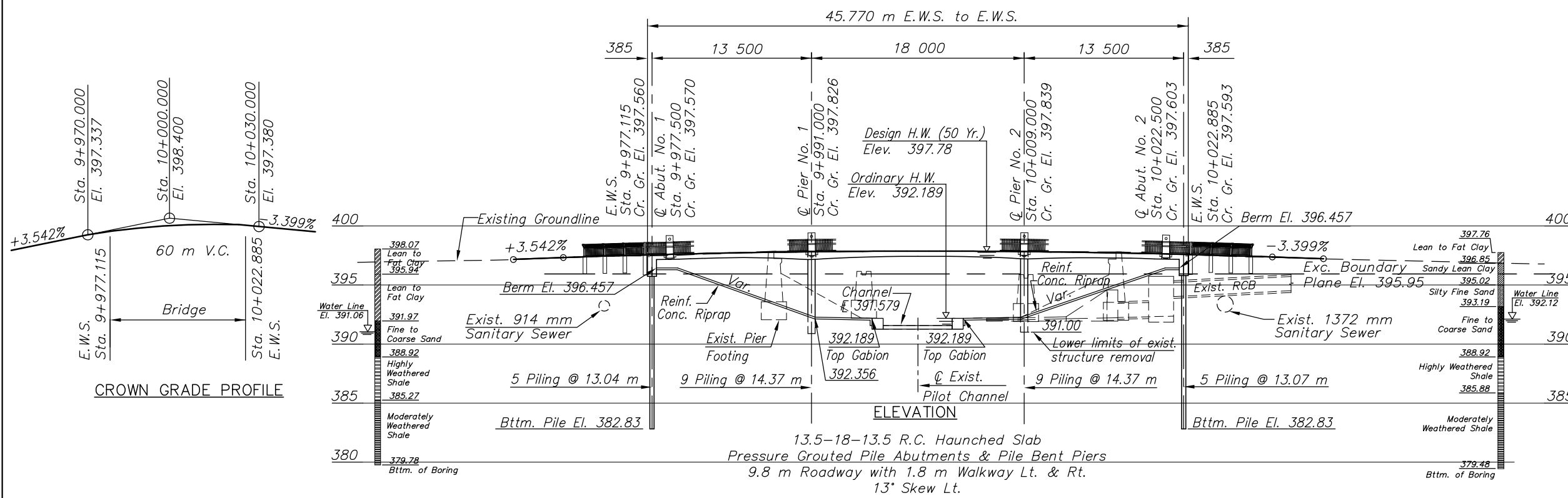


STATE	PROJECT NO.	YEAR	SHEET NO.	TOTAL SHEETS
KANSAS	87 N-0187-01	2006	15	47

DRAINAGE DATA

Drainage Area	54.5	km ²
Design Frequency	50	years
Design Discharge (Q 50)	219	m ³ /s
Design Highwater Elevation	397.78	
Design Backwater	-0.07	m
Design Backwater Elevation	397.71	
Overtopping Elevation (Sta. 9+977)	397.56	
Overtopping Discharge	180	m ³ /s
Overtopping Frequency	25+	years
Discharge at Q 100	257	m ³ /s
Backwater at Q 100	-0.17	m
Backwater Elevation at Q 100	398.12	
Historic Highwater Elevation	unknown	
Ordinary Highwater Elevation	395.45	
Total Waterway Provided	146	m ²
Design Waterway Provided	146	m ²
Average Design Velocity (Q 50)	1.29	m/s

The thermal movement at the abutment is ± 5 mm.
"W" = 25 mm

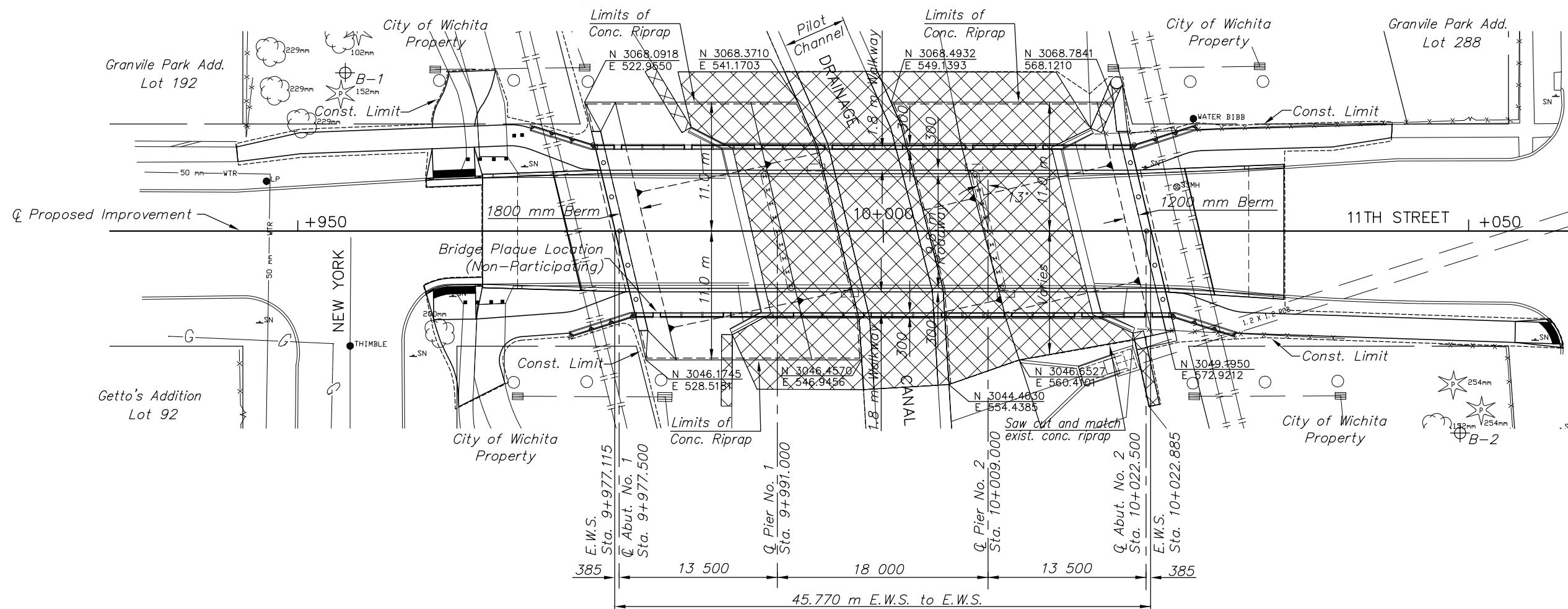


BM#13 "+" cut on the end of the southeast wingwall of the 10th Street North Bridge Elev.=397.755

BM#14 "+" cut on the end of the northeast wingwall of the 11th Street North Bridge Elev.=398.002

BM#16 C.O.W. disk on the southwest corner of the bridge median of the 13th Street North Bridge Elev.=398.809

NE 1/4, SECTION 16, T27S, R1E



SCALE = 1:200

Legend

- ⊕ Boring
- ⊗ Concrete riprap, gabion and reno mattress removal (Subsidiary to "Rock Excavation")

NOTE:
Use caution when constructing pedestrian handrail concrete end posts over existing sanitary sewer lines.

G:\CIVIL\98169\05693\PP\05693LAY.DWG 02/14/2006 03:53:52 PM CST

KANSAS DEPARTMENT OF TRANSPORTATION
BR. NO. 53040087WDC150 STA. 10+00.00

CONSTRUCTION LAYOUT

PROJECT NO. 87 N-0187-01 SEDGWICK CO.

M K E C ENGINEERING CONSULTANTS, INC.
WICHITA, KANSAS

DESIGNED BY: KJS	CHECKED BY: KJS
DRAWN BY: DPG/USB	DATE: DEC. 2005 SHEET 15 OF 47

PLAN