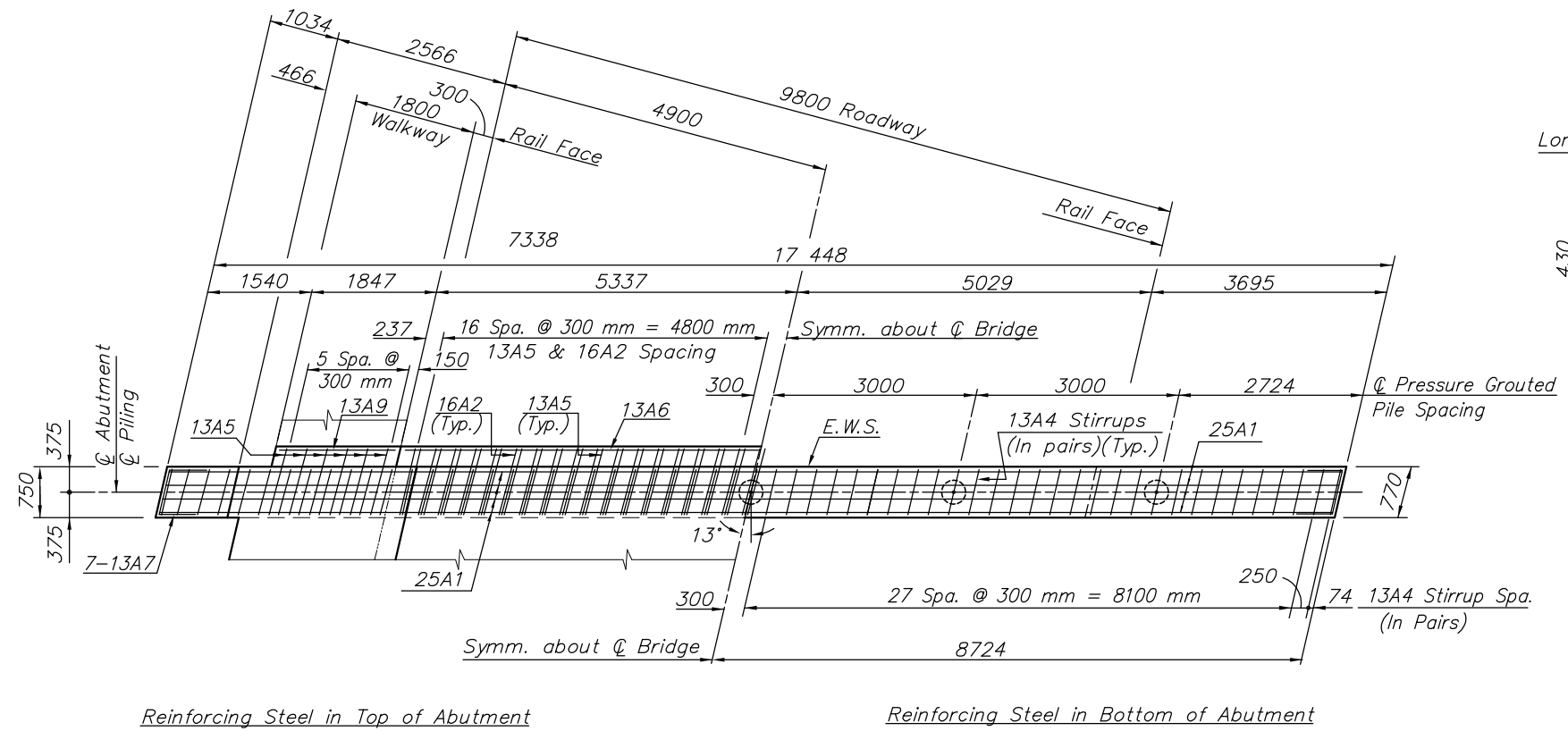
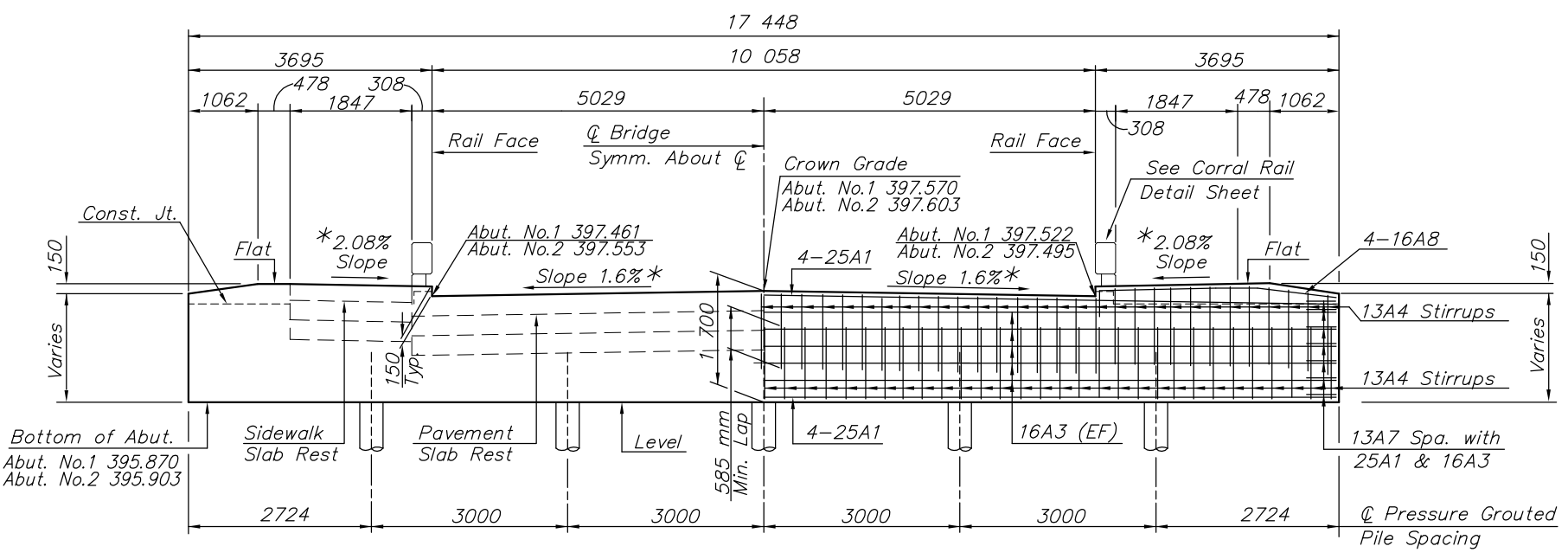
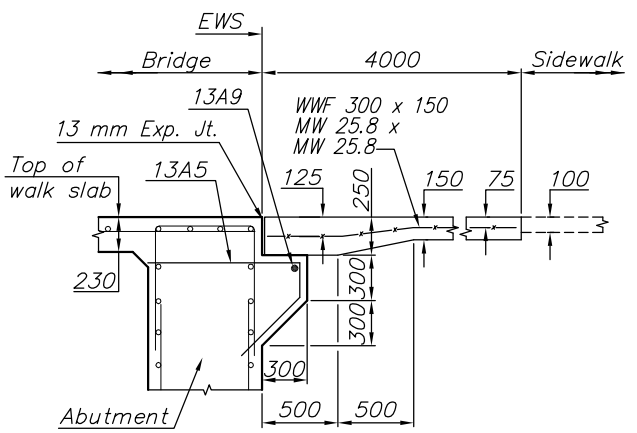
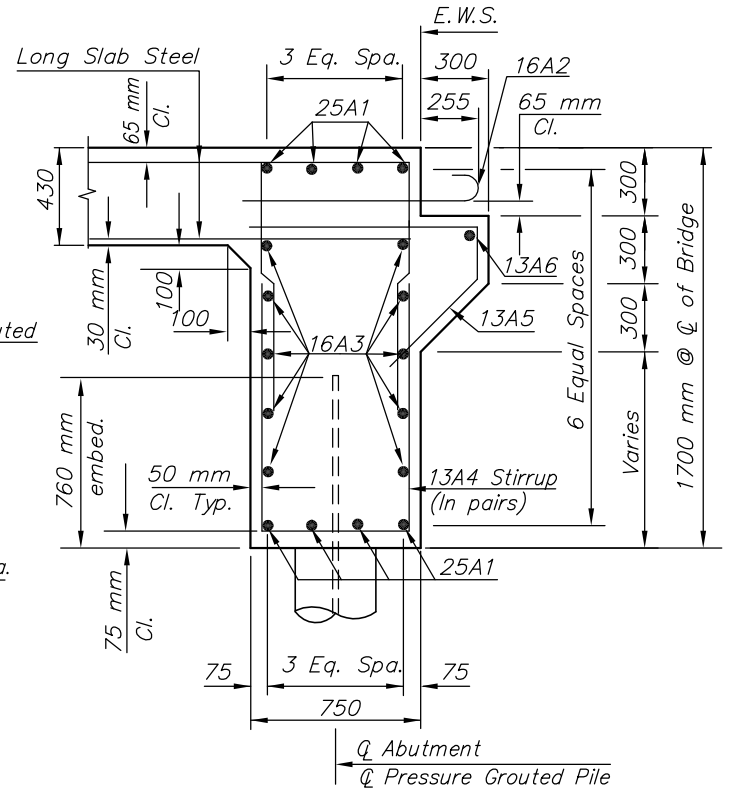


STATE	PROJECT NO.	YEAR	SHEET NO.	TOTAL SHEETS
KANSAS	87 N-0187-01	2006	16	47

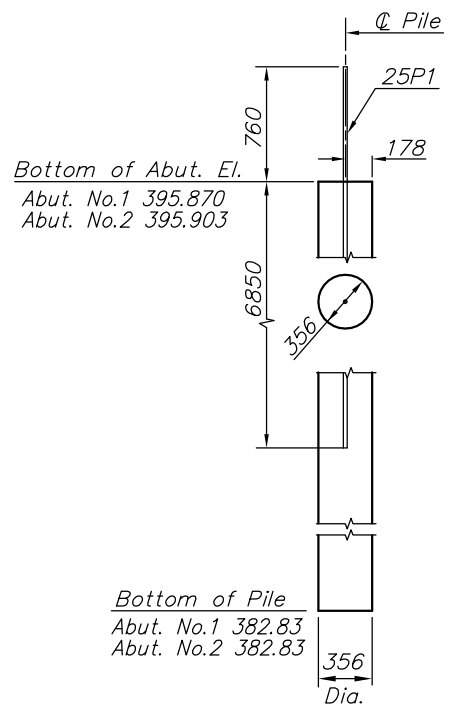


PLAN



ABUTMENT PILE LOADING

	Design	Allowable
Group I Loading	392 kN/Pile	500 kN/Pile



- PRESSURE GROUTED PILES:  
Special Provision 90P-4553
1. Drill continuous hollow shaft auger to required depth.
  2. Pile Grout  $f'_c = 27.6$  MPa
  3. Place mortar in continuous operation from bottom to top of pile. Inlet grout pressure minimum 0.8 MPa and maximum 1.7 MPa.
  4. Pump at least 115% of theoretical volume and maintain a mortar head of 3000 mm.
  5. Place reinforcing steel while mortar is still fluid use suitable centralizers.
  6. Before abutment is cast prepare surface of pile (sand blast and pressure wash).

- NOTES:
1. See "Rail Details" for additional reinforcing to be placed in abutment.
  2. Adjust stirrups to avoid conflict with rail bars.

G:\CIVIL\98169\05693\BRIDGE\05693ABU.DWG 02/15/2006 02:30:46 PM CST

KANSAS DEPARTMENT OF TRANSPORTATION  
BR. NO. 53040087WDC150 STA. 10+00.00

ABUTMENT DETAILS

PROJECT NO. 87 N-0187-01 SEDGWICK CO.

M K E C ENGINEERING CONSULTANTS, INC.  
WICHITA, KANSAS

DESIGNED BY: KJS	CHECKED BY: KJS
DRAWN BY: DPG/USB	DATE: DEC. 2005 SHEET 16 OF 47