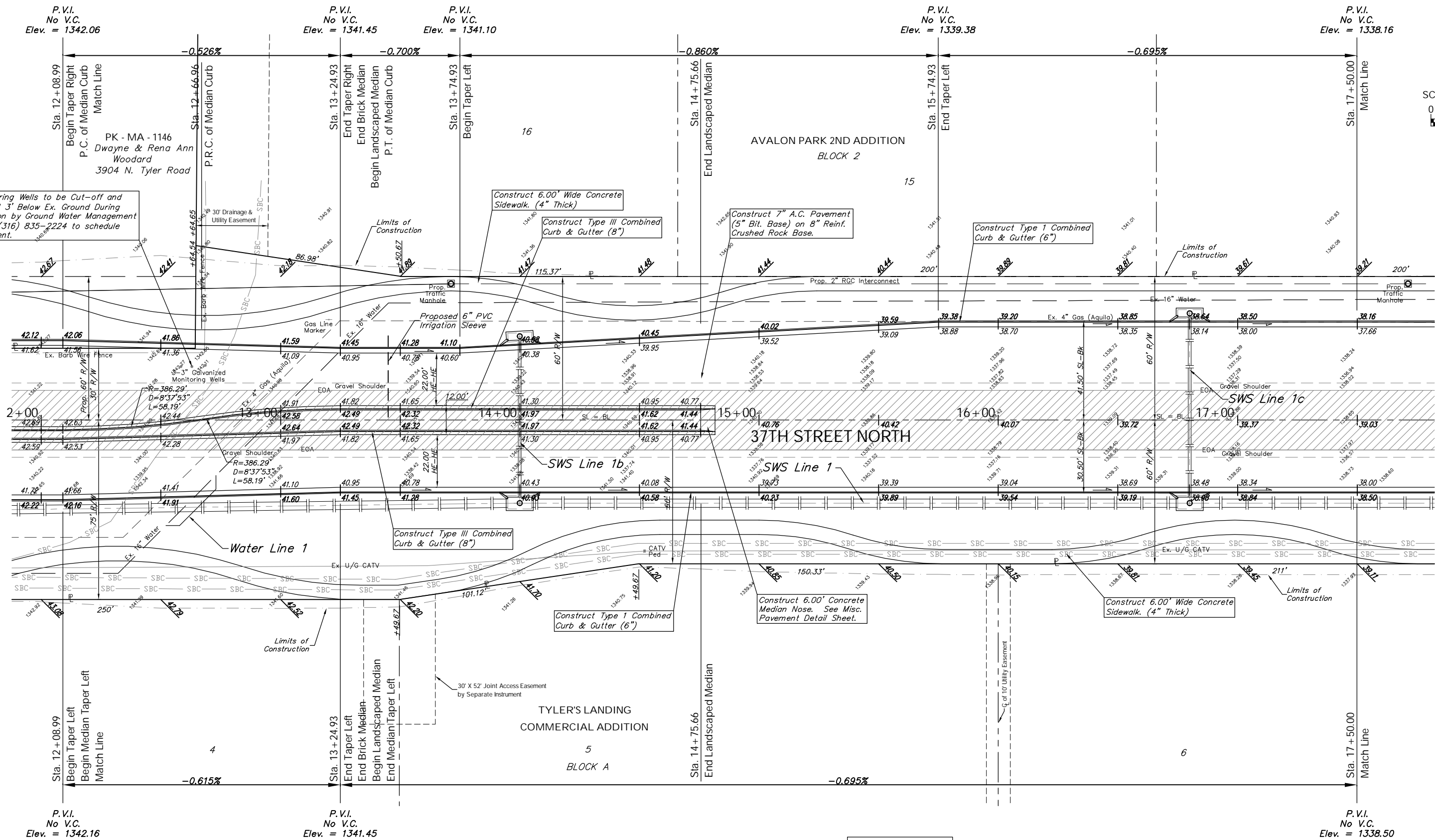
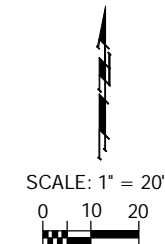


BENCHMARK:
 BM #8 - Steel T-Post Driven 4' Deep
 Sta. 18+00, 25' Rt.
 Elev. = 1337.73 MSL

FHWA NO.	STATE	PROJECT NO.	FISCAL YEAR	SHEET NO.	TOTAL SHEETS
7	KANSAS	87 N-0346-01	2006	13	146



Ex. Monitoring Wells to be Cut-off and Abandoned 3' Below Ex. Ground During Construction by Ground Water Management #2. Call (316) 835-2224 to schedule abandonment.

Note:
 Pavement, Sidewalks, and Etc. To Be Removed Are Indicated By:

Drawing File: F:\37th Pav\37th Land\dwg\37th Base.dwg (Pai02)
 Project No. 04-01-E791 CAPITAL IMPROVEMENT PROJECT
 Design: TPV
 Drawn: TPV
 Approved: TPV
 37TH STREET NORTH PAVING
 Sta. 12+08.99 to Sta. 17+50.00
 37TH STREET NORTH - TYLER ROAD TO RIDGE ROAD

Baughman Company, P.A.
 315 Ellis St. Wichita, KS 67211 P 316-262-7271 F 316-262-0149
 ENGINEERING | SURVEYING | PLANNING | LANDSCAPE ARCHITECTURE