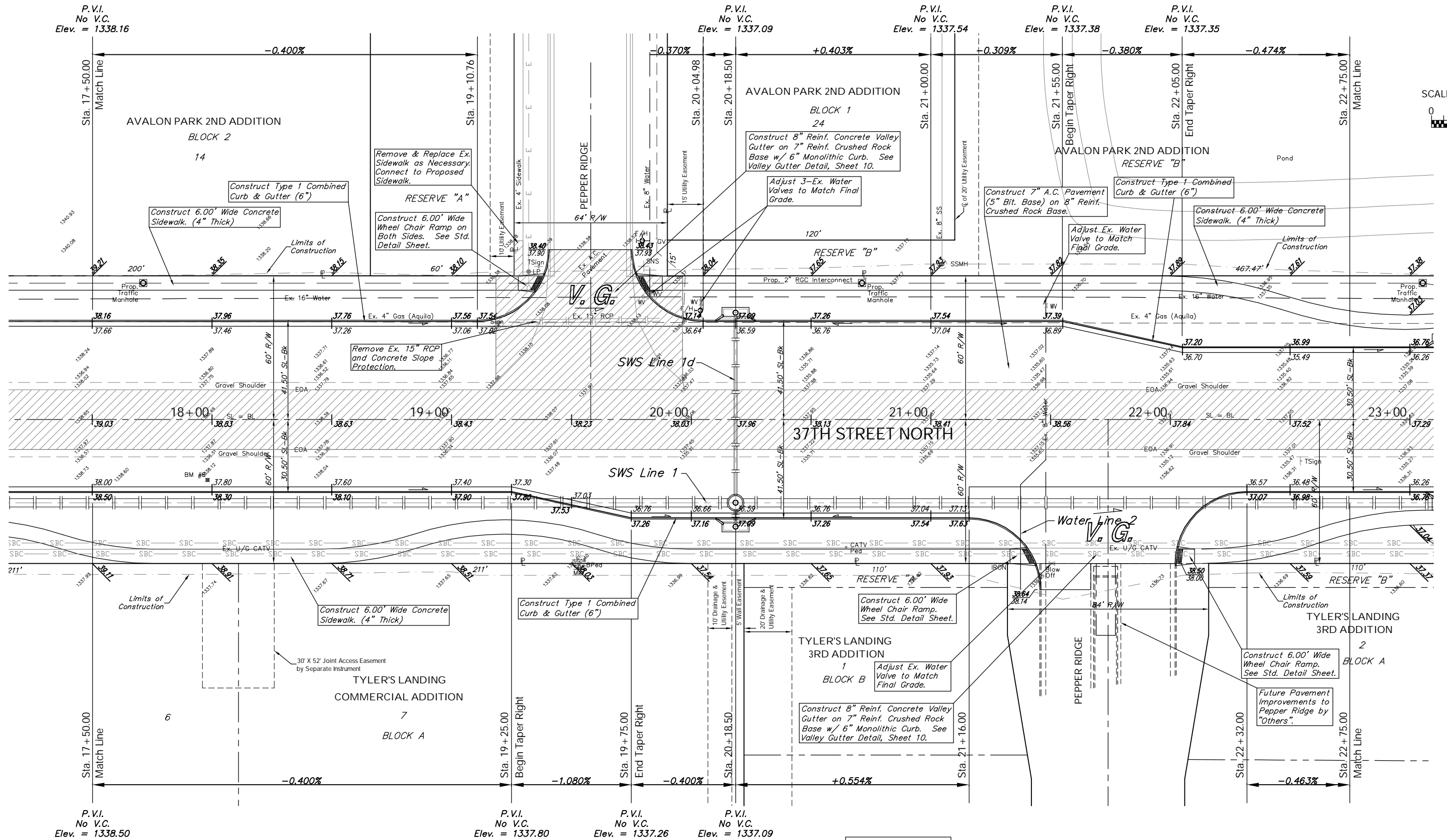
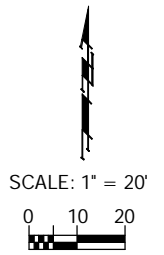


BENCHMARK:
 BM #8 - Steel T-Post Driven 4' Deep
 Sta. 18+00, 25' Rt.
 Elev. = 1337.73 MSL

R/W NO. SECTION	STATE	PROJECT NO.	FISCAL YEAR	SHEET NO.	TOTAL SHEETS
7	KANSAS	87 N-0346-01	2006	14	146



Note:
 Pavement, Sidewalks, and
 Etc. To Be Removed Are
 Indicated By:

Drawing File: F:\37th Pav\37th Land\dwg\37th Base.dwg (Pai03)
 Project No. 04-01-E791 CAPITAL IMPROVEMENT PROJECT
37TH STREET NORTH PAVING
 Sta. 17+50.00 to Sta. 22+75.00
 37TH STREET NORTH - TYLER ROAD TO RIDGE ROAD

Baughman Company, P.A.
 315 Ellis St. Wichita, KS 67211 P 316-262-7271 F 316-262-0149
 ENGINEERING | SURVEYING | PLANNING | LANDSCAPE ARCHITECTURE