

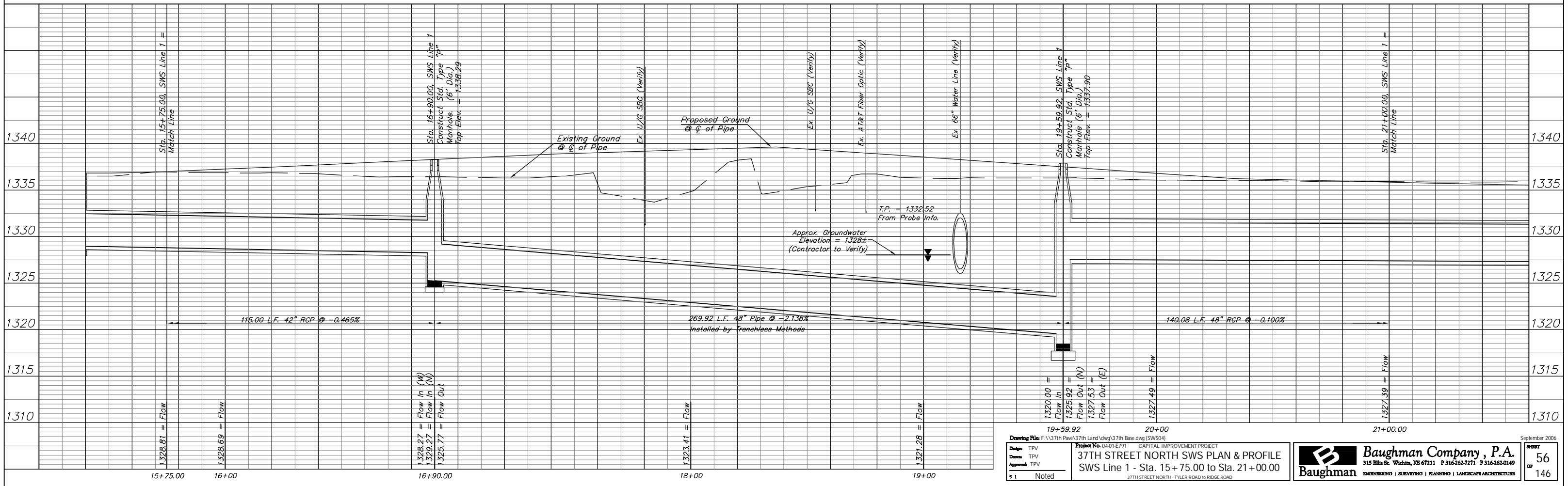
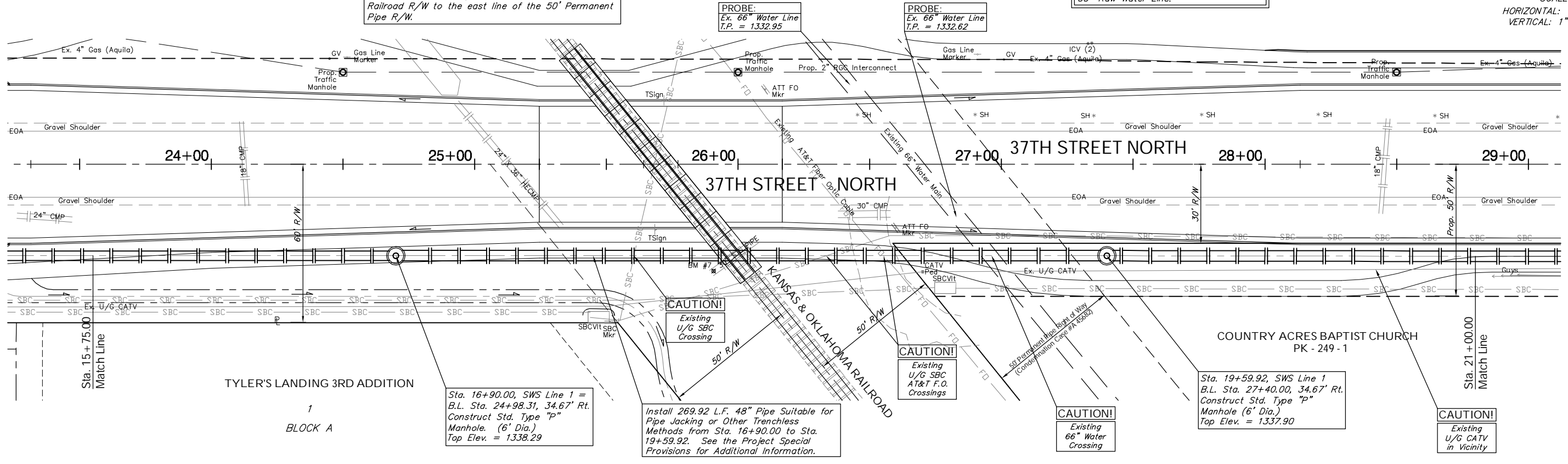
R/W NO. SECTION	STATE	PROJECT NO.	FISCAL YEAR	SHEET NO.	TOTAL SHEETS
7	KANSAS	87 N-0346-01	2006	56	146

**BENCHMARK:**  
 BM #7 - "X" on the West End of the Steel Casing Pipe at the Railroad Crossing South of 37th Street North Sta. 25+90, 41' Rt. Elev. = 1336.58 MSL

The Contractor shall have the option to shorten the length of Trenchless Construction for the installation of the 48" Pipe. The minimum length for the bore shall be approximately 193 L.F. from west line of the Railroad R/W to the east line of the 50' Permanent Pipe R/W.

The Storm Water Sewer Contractor Shall Contact the City of Wichita Water & Sewer Department a **Minimum** of 48 Hours Prior to Excavating Around the 66" Raw Water Line.

SCALE:  
 HORIZONTAL: 1" = 20'  
 VERTICAL: 1" = 5'



Drawing File: F:\37th Pave\37th Land\dwg\37th Base.dwg (SW504)

Project No. 04-01-E791 CAPITAL IMPROVEMENT PROJECT

**37TH STREET NORTH SWS PLAN & PROFILE**  
 SWS Line 1 - Sta. 15+75.00 to Sta. 21+00.00

37TH STREET NORTH - TYLER ROAD TO RIDGE ROAD

Design: TPV  
 Drawn: TPV  
 Approved: TPV

1 Noted

**Baughman Company, P.A.**  
 315 Ella St. Wichita, KS 67211 P 316-262-7271 F 316-262-0149

ENGINEERING | SURVEYING | PLANNING | LANDSCAPE ARCHITECTURE

September 2006

SHEET 56 OF 146